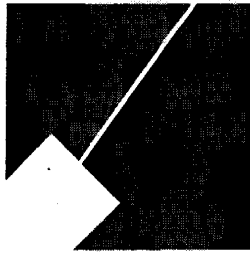


Item #12

M-NCPPC



MONTGOMERY COUNTY DEPARTMENT OF PARK AND PLANNING

THE MARYLAND-NATIONAL CAPITAL
PARK AND PLANNING COMMISSION

8787 Georgia Avenue
Silver Spring, Maryland 20910-3760

M E M O R A N D U M

DATE: June 04, 2004
TO: Montgomery County Planning Board
FROM: Catherine Conlon
Development Review Division
(301) 495-4542
SUBJECT: Informational Maps for Subdivision Items on the
Planning Board's Agenda for June 10, 2004.

Attached are copies of plan drawings for Item #12, #14, and #15. These subdivision items are scheduled for Planning Board consideration on June 10, 2004. The items are further identified as follows:

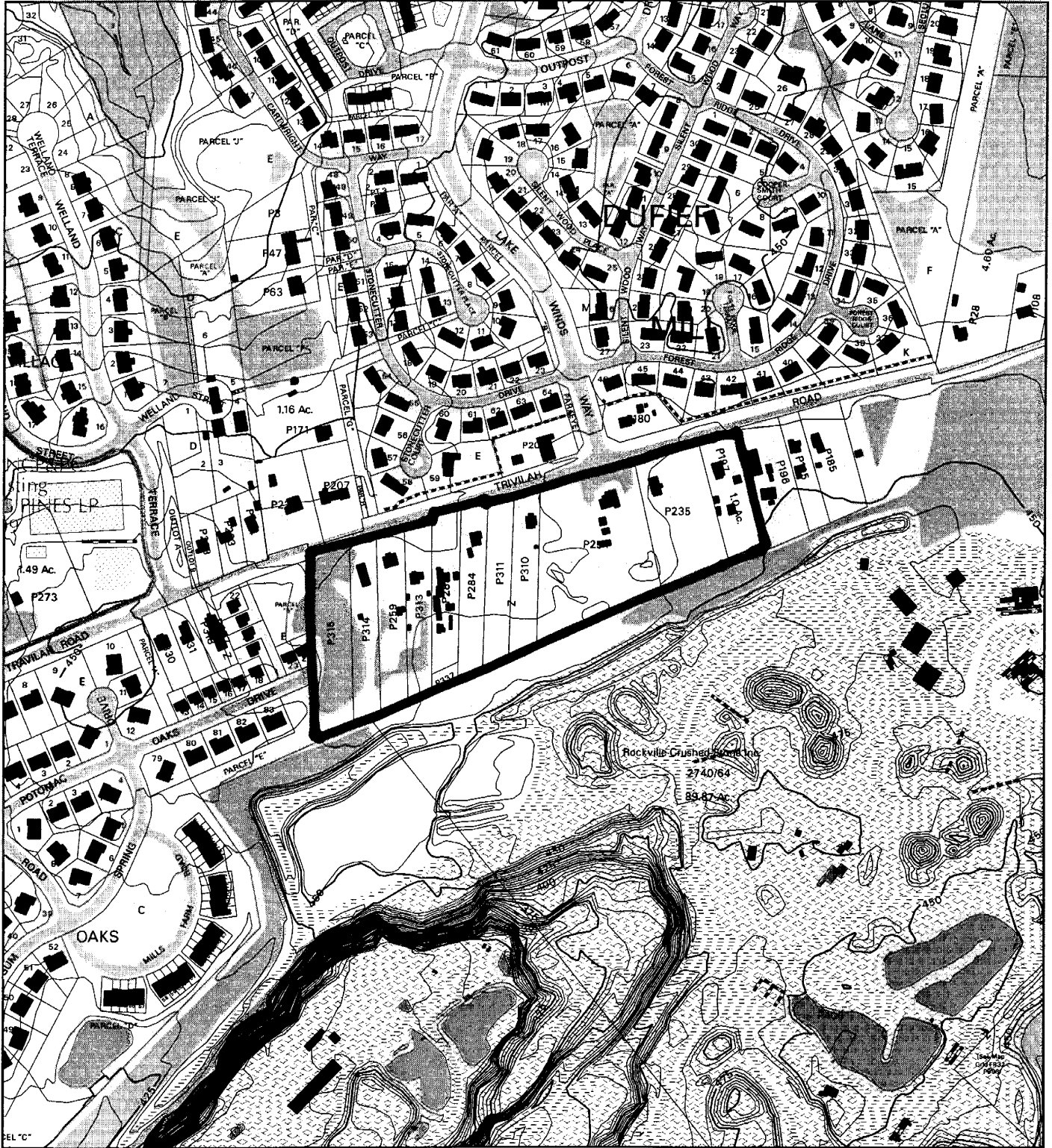
Agenda Item #12 - Preliminary Plan 1-04046
Potomacs Edge

Agenda Item #14 - Preliminary Plan 1-04067
Orr Station

Agenda Item #15 - Preliminary Plan 1-04071
West Virginia Avenue

Attachment

POTOMACS EDGE (1-04046)



Map compiled on June 04, 2004 at 10:21 AM | Site located on base sheet no - 218NW11

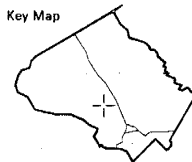
NOTICE

The planimetric, property, and topographic information shown on this map is based on copyrighted Map Products from the Montgomery County Department of Park and Planning of the Maryland - National Capital Park and Planning Commission, and may not be copied or reproduced without written permission from M-NCPPC.

Property lines are compiled by adjusting the property lines to topography created from aerial photography and should not be interpreted as actual field surveys. Planimetric features were compiled from 1:14400 scale aerial photography using stereo photogrammetric methods.

This map is created from a variety of data sources, and may not reflect the most current conditions in any one location and may not be completely accurate or up to date. All map features are approximately within five feet of their true location. This map may not be the same as a map of the same area plotted at an earlier time as the data is continuously updated. Use of this map, other than for general planning purposes is not recommended. - Copyright 1998

Key Map



N



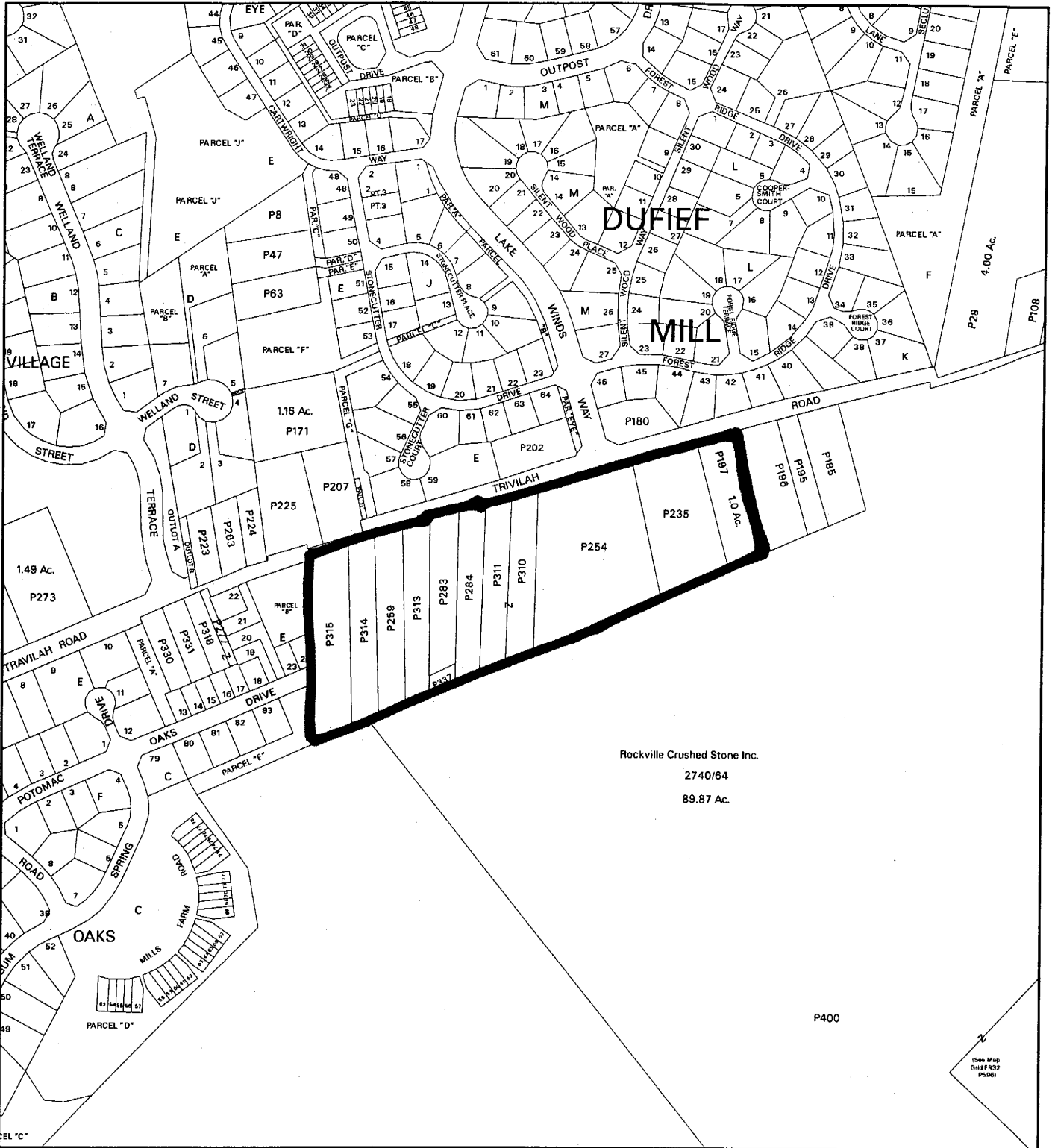
Research & Technology Center



1 inch = 400 feet
1 : 4800

MONTGOMERY COUNTY DEPARTMENT OF PARK AND PLANNING
THE MARYLAND-NATIONAL CAPITAL PARK AND PLANNING COMMISSION
8787 Georgia Avenue - Silver Spring, Maryland 20910-3760

POTOMACS EDGE (1-04046)



Map compiled on June 04, 2004 at 10:31 AM | Site located on base sheet no - 218NW11

NOTICE

The planimetric, property, and topographic information shown on this map is based on copyrighted Map Products from the Montgomery County Department of Park and Planning of the Maryland-National Capital Park and Planning Commission, and may not be copied or reproduced without written permission from M-NCPPC.

Property lines are compiled by adjusting the property lines to topography created from aerial photography and should not be interpreted as actual field surveys. Planimetric features were compiled from 1:14400 scale aerial photography using stereo photogrammetric methods.

This map is created from a variety of data sources, and may not reflect the most current conditions in any one location and may not be completely accurate or up to date. All map features are approximately within five feet of their true location. This map may not be the same as a map of the same area plotted at an earlier time as the data is continuously updated. Use of this map, other than for general planning purposes is not recommended. - Copyright 1998

Key Map



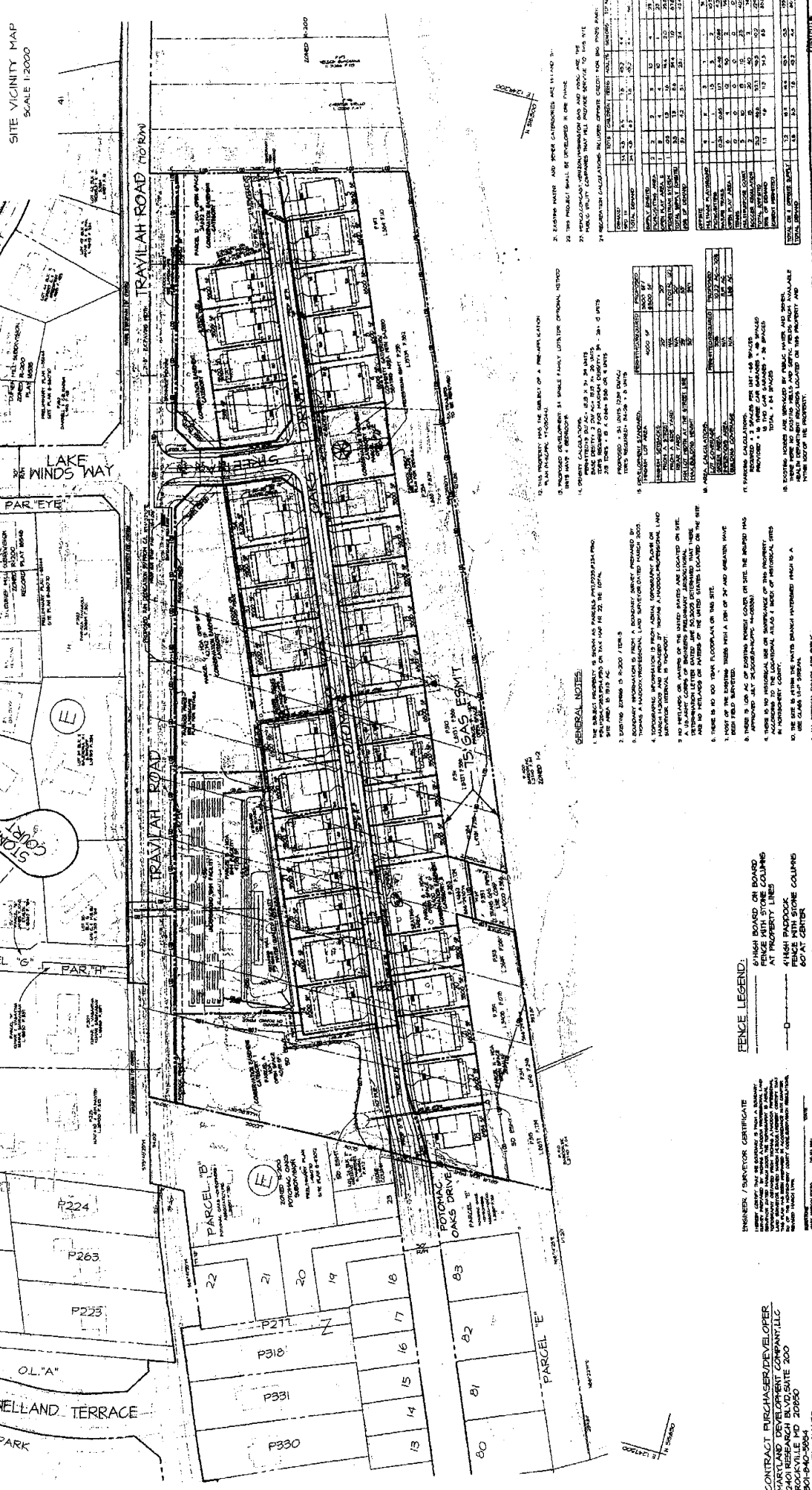
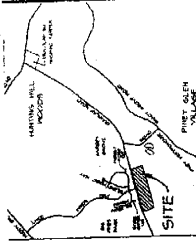
N



Research & Technology Center
0 400



1 inch = 400 feet
1 : 4800



2. EXISTING MATERS AND OTHER CATEGORIES ARE IN HAND 31.
 22 THIS PROJECT SHALL BE PROCEEDED IN ONE PHASE.
 23 THIS PROJECT SHALL BE PROCEEDED IN ONE PHASE.
 24 RECORDED CALCULATIONS INCLUDING GENERAL CREDIT FOR 800 PAGES MARK.

| NO. | DESCRIPTION | DATE | BY | REVISION |
|-----|------------------|----------|-----|----------|
| 1 | PRELIMINARY PLAN | 12/15/09 | CJM | 1 |
| 2 | REVISION | 12/15/09 | CJM | 2 |
| 3 | REVISION | 12/15/09 | CJM | 3 |
| 4 | REVISION | 12/15/09 | CJM | 4 |
| 5 | REVISION | 12/15/09 | CJM | 5 |
| 6 | REVISION | 12/15/09 | CJM | 6 |
| 7 | REVISION | 12/15/09 | CJM | 7 |
| 8 | REVISION | 12/15/09 | CJM | 8 |
| 9 | REVISION | 12/15/09 | CJM | 9 |
| 10 | REVISION | 12/15/09 | CJM | 10 |
| 11 | REVISION | 12/15/09 | CJM | 11 |
| 12 | REVISION | 12/15/09 | CJM | 12 |
| 13 | REVISION | 12/15/09 | CJM | 13 |
| 14 | REVISION | 12/15/09 | CJM | 14 |
| 15 | REVISION | 12/15/09 | CJM | 15 |
| 16 | REVISION | 12/15/09 | CJM | 16 |
| 17 | REVISION | 12/15/09 | CJM | 17 |
| 18 | REVISION | 12/15/09 | CJM | 18 |
| 19 | REVISION | 12/15/09 | CJM | 19 |
| 20 | REVISION | 12/15/09 | CJM | 20 |
| 21 | REVISION | 12/15/09 | CJM | 21 |
| 22 | REVISION | 12/15/09 | CJM | 22 |
| 23 | REVISION | 12/15/09 | CJM | 23 |
| 24 | REVISION | 12/15/09 | CJM | 24 |
| 25 | REVISION | 12/15/09 | CJM | 25 |
| 26 | REVISION | 12/15/09 | CJM | 26 |
| 27 | REVISION | 12/15/09 | CJM | 27 |
| 28 | REVISION | 12/15/09 | CJM | 28 |
| 29 | REVISION | 12/15/09 | CJM | 29 |
| 30 | REVISION | 12/15/09 | CJM | 30 |
| 31 | REVISION | 12/15/09 | CJM | 31 |
| 32 | REVISION | 12/15/09 | CJM | 32 |
| 33 | REVISION | 12/15/09 | CJM | 33 |
| 34 | REVISION | 12/15/09 | CJM | 34 |
| 35 | REVISION | 12/15/09 | CJM | 35 |
| 36 | REVISION | 12/15/09 | CJM | 36 |
| 37 | REVISION | 12/15/09 | CJM | 37 |
| 38 | REVISION | 12/15/09 | CJM | 38 |
| 39 | REVISION | 12/15/09 | CJM | 39 |
| 40 | REVISION | 12/15/09 | CJM | 40 |
| 41 | REVISION | 12/15/09 | CJM | 41 |
| 42 | REVISION | 12/15/09 | CJM | 42 |
| 43 | REVISION | 12/15/09 | CJM | 43 |
| 44 | REVISION | 12/15/09 | CJM | 44 |
| 45 | REVISION | 12/15/09 | CJM | 45 |
| 46 | REVISION | 12/15/09 | CJM | 46 |
| 47 | REVISION | 12/15/09 | CJM | 47 |
| 48 | REVISION | 12/15/09 | CJM | 48 |
| 49 | REVISION | 12/15/09 | CJM | 49 |
| 50 | REVISION | 12/15/09 | CJM | 50 |
| 51 | REVISION | 12/15/09 | CJM | 51 |
| 52 | REVISION | 12/15/09 | CJM | 52 |
| 53 | REVISION | 12/15/09 | CJM | 53 |
| 54 | REVISION | 12/15/09 | CJM | 54 |
| 55 | REVISION | 12/15/09 | CJM | 55 |
| 56 | REVISION | 12/15/09 | CJM | 56 |
| 57 | REVISION | 12/15/09 | CJM | 57 |
| 58 | REVISION | 12/15/09 | CJM | 58 |
| 59 | REVISION | 12/15/09 | CJM | 59 |
| 60 | REVISION | 12/15/09 | CJM | 60 |
| 61 | REVISION | 12/15/09 | CJM | 61 |
| 62 | REVISION | 12/15/09 | CJM | 62 |
| 63 | REVISION | 12/15/09 | CJM | 63 |
| 64 | REVISION | 12/15/09 | CJM | 64 |
| 65 | REVISION | 12/15/09 | CJM | 65 |
| 66 | REVISION | 12/15/09 | CJM | 66 |
| 67 | REVISION | 12/15/09 | CJM | 67 |
| 68 | REVISION | 12/15/09 | CJM | 68 |
| 69 | REVISION | 12/15/09 | CJM | 69 |
| 70 | REVISION | 12/15/09 | CJM | 70 |
| 71 | REVISION | 12/15/09 | CJM | 71 |
| 72 | REVISION | 12/15/09 | CJM | 72 |
| 73 | REVISION | 12/15/09 | CJM | 73 |
| 74 | REVISION | 12/15/09 | CJM | 74 |
| 75 | REVISION | 12/15/09 | CJM | 75 |
| 76 | REVISION | 12/15/09 | CJM | 76 |
| 77 | REVISION | 12/15/09 | CJM | 77 |
| 78 | REVISION | 12/15/09 | CJM | 78 |
| 79 | REVISION | 12/15/09 | CJM | 79 |
| 80 | REVISION | 12/15/09 | CJM | 80 |
| 81 | REVISION | 12/15/09 | CJM | 81 |
| 82 | REVISION | 12/15/09 | CJM | 82 |
| 83 | REVISION | 12/15/09 | CJM | 83 |
| 84 | REVISION | 12/15/09 | CJM | 84 |
| 85 | REVISION | 12/15/09 | CJM | 85 |
| 86 | REVISION | 12/15/09 | CJM | 86 |
| 87 | REVISION | 12/15/09 | CJM | 87 |
| 88 | REVISION | 12/15/09 | CJM | 88 |
| 89 | REVISION | 12/15/09 | CJM | 89 |
| 90 | REVISION | 12/15/09 | CJM | 90 |
| 91 | REVISION | 12/15/09 | CJM | 91 |
| 92 | REVISION | 12/15/09 | CJM | 92 |
| 93 | REVISION | 12/15/09 | CJM | 93 |
| 94 | REVISION | 12/15/09 | CJM | 94 |
| 95 | REVISION | 12/15/09 | CJM | 95 |
| 96 | REVISION | 12/15/09 | CJM | 96 |
| 97 | REVISION | 12/15/09 | CJM | 97 |
| 98 | REVISION | 12/15/09 | CJM | 98 |
| 99 | REVISION | 12/15/09 | CJM | 99 |
| 100 | REVISION | 12/15/09 | CJM | 100 |

GENERAL NOTES:
 1. THE SUBJECT PROPERTY IS SHOWN AS BEING UNDEVELOPED.
 2. EXISTING ZONING IS R-2000 / T-1000.
 3. BOUNDARY INFORMATION IS FROM A BOUNDARY SURVEY PREPARED BY [NAME] ON [DATE] FOR [AREA].
 4. TOPOGRAPHIC INFORMATION IS FROM [SOURCE].
 5. NO UTILITIES OR MATERS OF THE UNITED STATES ARE LOCATED ON SITE.
 6. THERE IS NO 80 YEAR FLOODPLAIN ON THIS SITE.
 7. MOST OF THE EXISTING TREES WITH A DBH OF 3" AND GREATER HAVE BEEN FIELD SURVEYED.
 8. THERE IS NO HISTORICAL USE OR SIGNIFICANCE OF THIS PROPERTY ACCORDING TO THE LOCAL HISTORICAL ATLAS & MAPS OF HISTORICAL SITES.
 9. THERE IS NO HISTORICAL ATLAS & MAPS OF HISTORICAL SITES LOCATED ON THIS SITE.
 10. ALL UTILITIES ARE SHOWN AS BEING UNDEVELOPED.
 11. ALL UTILITIES ARE SHOWN AS BEING UNDEVELOPED.

ANALYSIS CALCULATIONS

| NO. | DESCRIPTION | AREA (SQ. FT.) | PERCENTAGE |
|-----|--------------------------|----------------|------------|
| 1 | TOTAL LOT AREA | 100,000 | 100% |
| 2 | IMPERVIOUS SURFACE | 50,000 | 50% |
| 3 | PERMEABLE SURFACE | 50,000 | 50% |
| 4 | TOTAL IMPERVIOUS SURFACE | 50,000 | 50% |
| 5 | TOTAL PERMEABLE SURFACE | 50,000 | 50% |
| 6 | TOTAL SURFACE | 100,000 | 100% |

FENCE LEGEND:
 6" HIGH BOARD ON BOARD FENCE WITH STONE COLUMNS AT PROPERTY LINES
 4" HIGH PANDOC FENCE WITH STONE COLUMNS 60 FT. CENTER

CONTRACT PURCHASER/DEVELOPER
 VANTAGE DEVELOPMENT COMPANY, LLC
 2401 RESEARCH BLVD, SUITE 200
 ROCKVILLE, MD 20850
 301-463-5588
 ATTN: TED SMART

CONTRACT PURCHASER/DEVELOPER
 VANTAGE DEVELOPMENT COMPANY, LLC
 2401 RESEARCH BLVD, SUITE 200
 ROCKVILLE, MD 20850
 301-463-5588
 ATTN: TED SMART

DATE: DEC 2009
 DESIGNED: CJM
 CHECKED: KVC
 PLAN LOCATION: [LOCATION]
 SHEET NO.: 100060

NO. []
 REVISION []
 BY []
 DATE []
 CHECKED []
 DATE []

SCALE: 1"=50'
 SHEET NO.: 100060

PRELIMINARY PLAN
 POTOMACS EDGE
 A TR. ELECTION PROJECT
 POTOMAC COUNTY, MARYLAND

PRELIMINARY PLAN
 POTOMACS EDGE
 A TR. ELECTION PROJECT
 POTOMAC COUNTY, MARYLAND

Apex engineering