

# MAGRUDER HIGH SCHOOL



Map compiled on June 02, 2004 at 3:32 PM | Site located on base sheet no - 222NW06 | Date of Orthophotos - March 2002 | Orthophoto Images Licensed from VARGIS LLC.

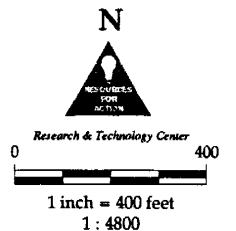
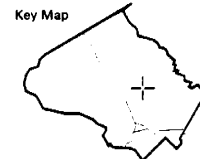
**NOTICE**

The planimetric, property, and topographic information shown on this map is based on copyrighted Map Products from the Montgomery County Department of Park and Planning of the Maryland - National Capital Park and Planning Commission, and may not be copied or reproduced without written permission from M-NCPPC.

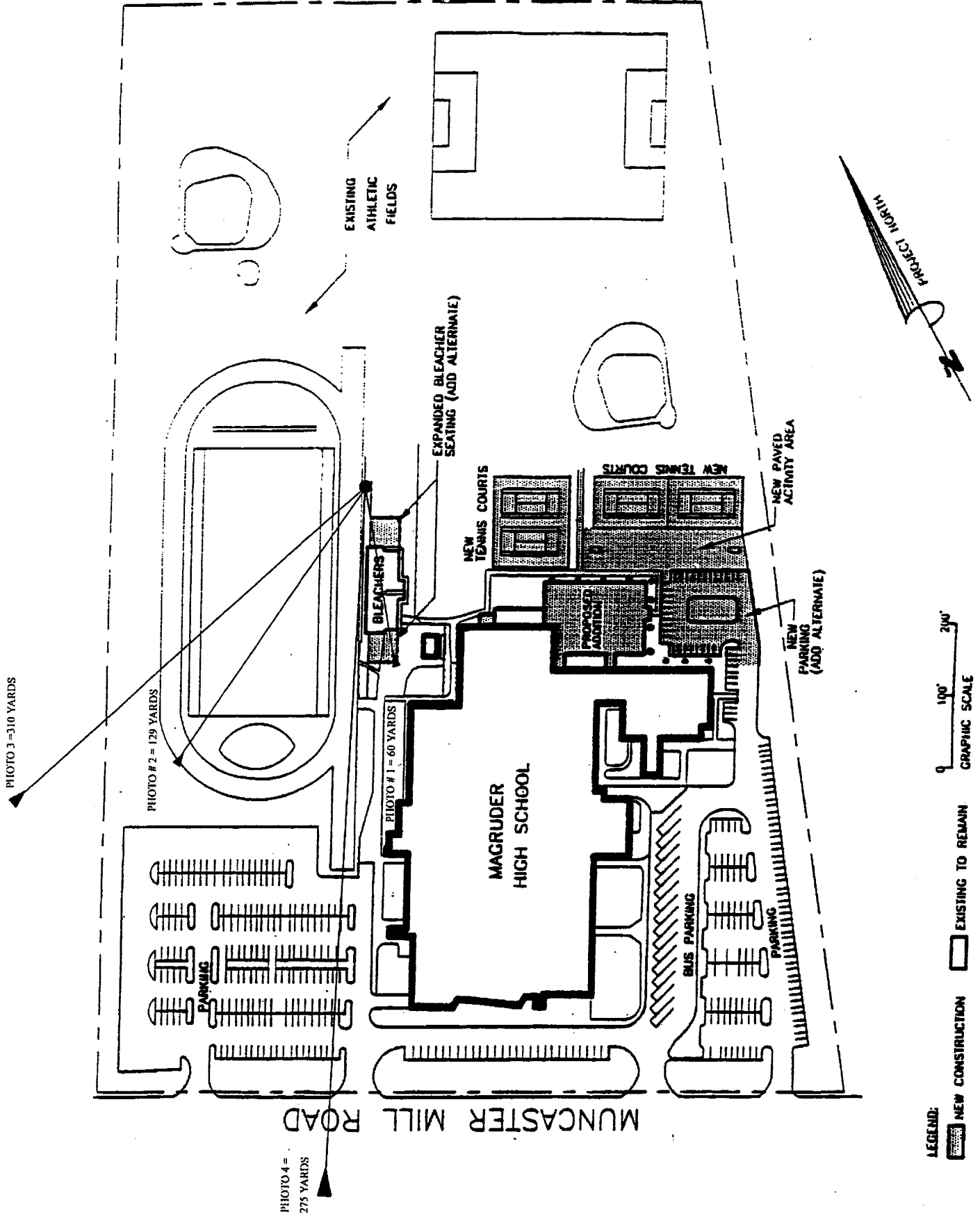
Property lines are compiled by adjusting the property lines to topography created from aerial photography and should not be interpreted as actual field surveys. Planimetric features were compiled from 1:14400 scale aerial photography using stereo photogrammetric methods.

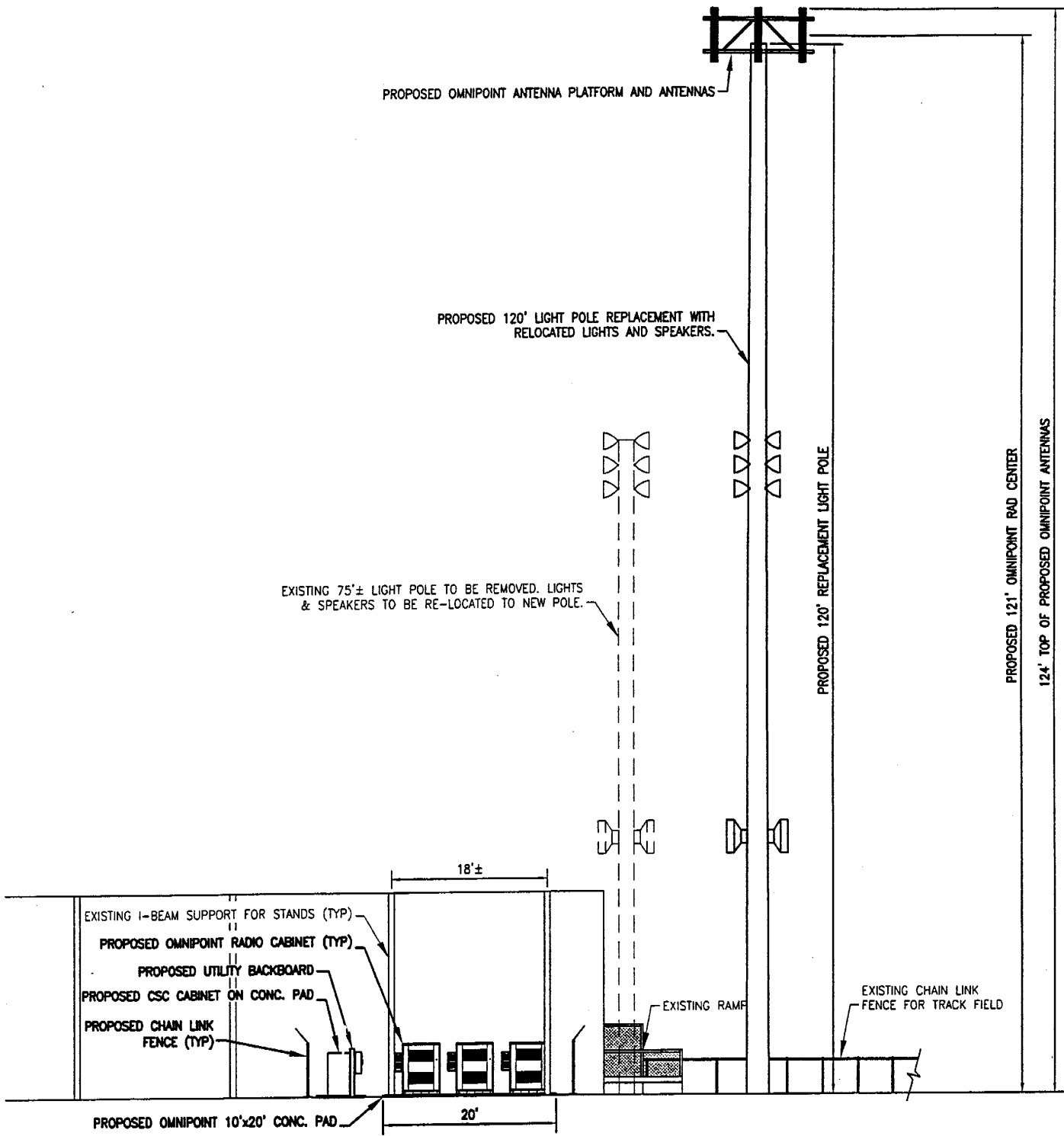
This map is created from a variety of data sources, and may not reflect the most current conditions in any one location and may not be completely accurate or up to date. All map features are approximately within five feet of their true location. This map may not be the same as a map of the same area plotted at an earlier time as the data is continuously updated. Use of this map, other than for general planning purposes is not recommended. - Copyright 1998

**MONTGOMERY COUNTY DEPARTMENT OF PARK AND PLANNING**  
 THE MARYLAND-NATIONAL CAPITAL PARK AND PLANNING COMMISSION  
 8787 Georgia Avenue - Silver Spring, Maryland 20910-3760



# ATTACHMENT 2





NOTE: PPC NOT SHOWN FOR CLARITY

1 EQUIPMENT ELEVATION  
 LE-2 SCALE: 1/16" = 1'-0"

**OMNIPPOINT COMMUNICATIONS  
 CAP OPERATIONS, LLC**

12050 BALTIMORE AVENUE BELTSVILLE, MD 20705  
 Tel (240) 284-9460 Fax (240) 284-9610

<b>WAN071B LEASE EXHIBIT</b>		
MCGRUDER HIGH SCHOOL 5939 MUNCASTER ROAD ROCKVILLE, MD 20855		
SIZE <b>A</b>	SUPPORT ENGINEERING	DWG NO. <b>TM0217-03_LE.DWG</b>
DATE: <b>1/12/04</b>	SHEET <b>LE-2</b>	REV <input type="checkbox"/>