

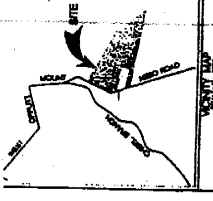
Conditions Recommended Comparison

Comparison of Conditions for Approval in Current Plan (by condition number) for All Petitions

Condition	Wholesale Nursery	Landscape Contractor	Manufacture of Mulch
1. Standard Conditions			
<i>Petitioner bound by all testimony and exhibits</i>	1	1	1
<i>Petitioner bound by all submitted statements and plans</i>	2	2	2
<i>Limits for Onsite Operations</i>	5	5	5
Right to government agency access for inspections	9	9	9
2. Provisions to Limit Commercial Access to the Property			
<i>Driveway access provision and limit</i>	3	3	3
Outside contractor access limit	4	4	4
Access to vehicle logs requirement	11	11	11
<i>Vehicle log requirement</i>	19	17	17
<i>Vehicle delivery and pickup limits</i>	18		17
Tractor-trailer visit limits	18	18	19
3. Vehicle & Equipment Provisions			
Limit on track vehicle use	7	7	7
<i>Limit on Permitted number and size of vehicles for operation</i>		18	
<i>Equipment list and limits and storage</i>	21		26
<i>Onsite Storage Structures</i>	22	19	
4. Buffering & Landscaping Provisions			
<i>Buffering and Landscaping Requirement</i>	6	6	6
Landscaping installation requirement		20	
5. Environmental Requirements			
<i>Forest Conservation Plan requirement</i>	14	14	14
<i>Stormwater Management Plan Requirement</i>	15	15	
<i>Sediment and Erosion Control Permits Requirement</i>			16
6. Other Standard Operations Limits			
<i>Hours of Operation Limits</i>	16	16	15
<i>Employee Limits</i>	20	21	29
Certified Compost Operator Requirement			25

7. Use Specific Operations Issues			
<i>Restriction on burning or burying material</i>	8	8	8
<i>Fire prevention plan specifications</i>			21
<i>Fuel tank requirements</i>	12	12	12
Establishment of Community Liaison Committee	10	10	10
Liability Insurance Requirement	13	13	13
Wholesale Nursery Only			
Pesticide or fertilizer application certification requirement	17		
Landscape Contractor Only			
Requirement of house use for employee toilets		22	
Mulch Manufacture Only			
<i>Material processing limits</i>			18
<i>Permit requirements</i>			20
County Air and Noise Code Compliance			27
Manure use restrictions			22
Odor control measures requirement			23
Sign Requirement			24
Nutrient Management Plan requirement			29
Abandonment process requirement			30
Compost storage requirement			31
Wood Waste processing requirement			32
Additives restriction			33
Material used restriction			34

Conditions in Italics were recommended by the Planning Board. Some were modified by the Hearing Examiner.



NOTES:

- 1) THE BOUNDARY INFORMATION SHOWN HEREON IS BASED UPON AVAILABLE PUBLIC RECORDS AND NOT AN ACTUAL SURVEY PREPARED BY LOEDERMAN SOLTESZ ASSOCIATES.
- 2) THE TOPOGRAPHIC INFORMATION SHOWN HEREON WAS OBTAINED FROM THE MARYLAND-NATIONAL CAPITAL PARK AND PLANNING COMMISSION. COPYRIGHT DATE 1985. MAP 2200W21.

Handwritten note:
 - Think fine, Lo and Cypress
 - or similar emulsiacs 15'
 on center

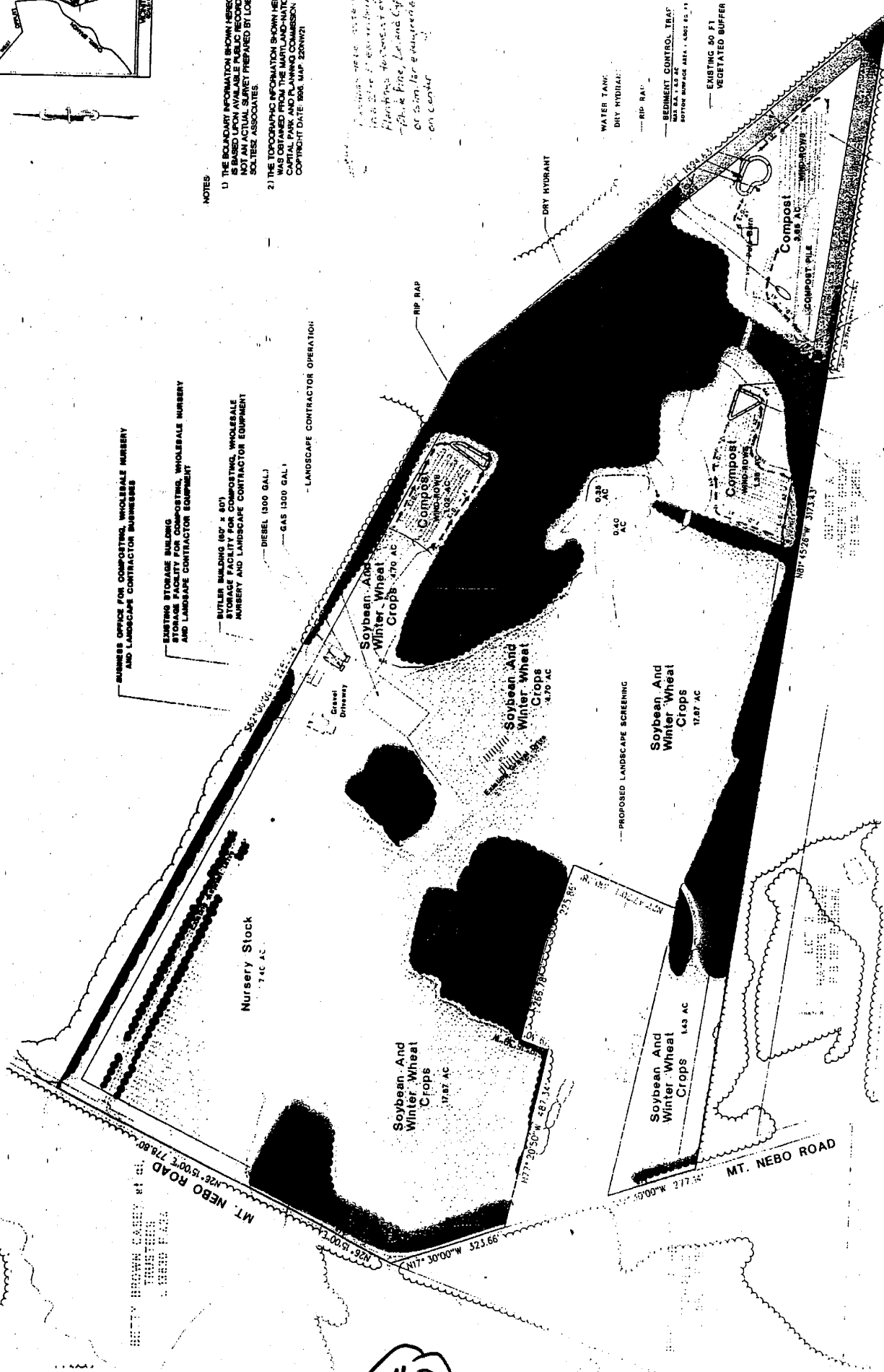
BUSINESS OFFICE FOR COMPOSTING, WHOLESALE NURSERY AND LANDSCAPE CONTRACTOR BUSINESSES

EXISTING STORAGE BUILDING AND LANDSCAPE CONTRACTOR EQUIPMENT

BUTLER BUILDING (80' x 80') EXISTING FOR COMPOSTING, WHOLESALE NURSERY AND LANDSCAPE CONTRACTOR EQUIPMENT

DIESEL (800 GAL.)
 GAS (3000 GAL.)

LANDSCAPE CONTRACTOR OPERATION



SEDIMENT CONTROL TRAP
 MAX. EX. 18" x 18" x 18"
 SETBACK FROM EDGE - 1,000 TO 10'

EXISTING 50 FT VEGETATED BUFFER

WIRE UTILITY SITE

WIRE UTILITY SITE

SEDIMENT CONTROL TRAP
 MAX. EX. 18" x 18" x 18"
 SETBACK FROM EDGE - 1,000 TO 10'



SPECIAL EXCEPTION SITE PLAN

TWIN PONDS

310 PROGRESS COLLECTION DISTRICT
 MONTGOMERY COUNTY, MARYLAND

CLIENT:
 TWIN PONDS FARM, LLC
 7810 WOODROW PLACE
 CABIN JOHN, MD 20818

Loiederma Soltesz Associates



40

MT. NEBO ROAD

17'-9"



SHOULDER

17'

TWIN PONDS ENTRANCE

RAISED ISLAND WITH 6" RAISED CURB (STD. TYPE "A" MC-100.01)

APPROVED _____

DATE _____

DIRECTOR, DEPT. OF TRANS.

CHIEF, DIV. ENG. SERVICES

REVISED

MONTGOMERY COUNTY
DEPARTMENT OF TRANSPORTATION

CONCEPTUAL ENTRANCE DESIGN

STANDARD NO.

41