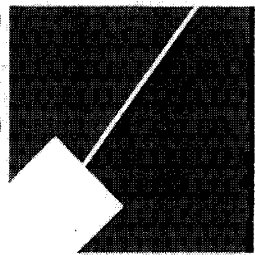


M-NCPPC



MONTGOMERY COUNTY DEPARTMENT OF PARK AND PLANNING

THE MARYLAND-NATIONAL CAPITAL
PARK AND PLANNING COMMISSION

8787 Georgia Avenue
Silver Spring, Maryland 20910-3760

M E M O R A N D U M

DATE: June 25, 2004
TO: Montgomery County Planning Board
FROM: Catherine Conlon
Development Review Division
(301) 495-4542
SUBJECT: Informational Maps for Subdivision Items on the
Planning Board's Agenda for July 1, 2004.

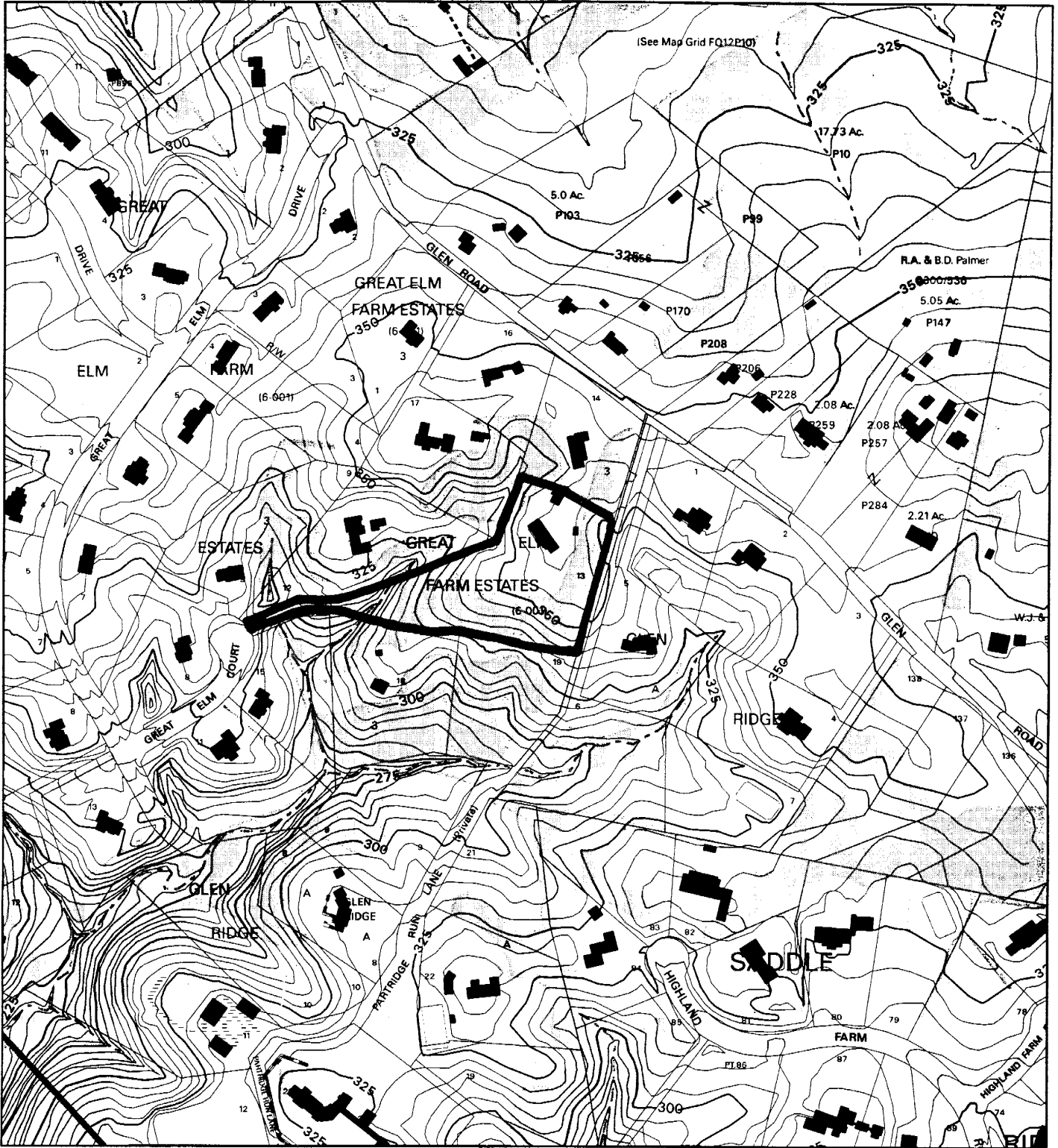
Attached are copies of plan drawings for Item #05 and #06. These subdivision items are scheduled for Planning Board consideration on July 1, 2004. The items are further identified as follows:

Agenda Item #05 - Preliminary Plan 1-04083
F. P. Nash

Agenda Item #06 - Preliminary Plan 1-04066
Great Elm Farm Estates

Attachment

GREAT ELM FARM ESTATES (1-04066)



Map compiled on June 18, 2004 at 11:01 AM | Site located on base sheet no - 215NW11

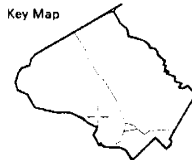
NOTICE

The planimetric, property, and topographic information shown on this map is based on copyrighted Map Products from the Montgomery County Department of Park and Planning of the Maryland-National Capital Park and Planning Commission, and may not be copied or reproduced without written permission from M-NCPPC.

Property lines are compiled by adjusting the property lines to topography created from aerial photography and should not be interpreted as actual field surveys. Planimetric features were compiled from 1:14400 scale aerial photography using stereo photogrammetric methods.

This map is created from a variety of data sources, and may not reflect the most current conditions in any one location and may not be completely accurate or up to date. All map features are approximately within five feet of their true location. This map may not be the same as a map of the same area plotted at an earlier time as the data is continuously updated. Use of this map, other than for general planning purposes is not recommended. - Copyright 1998

Key Map



N



Research & Technology Center

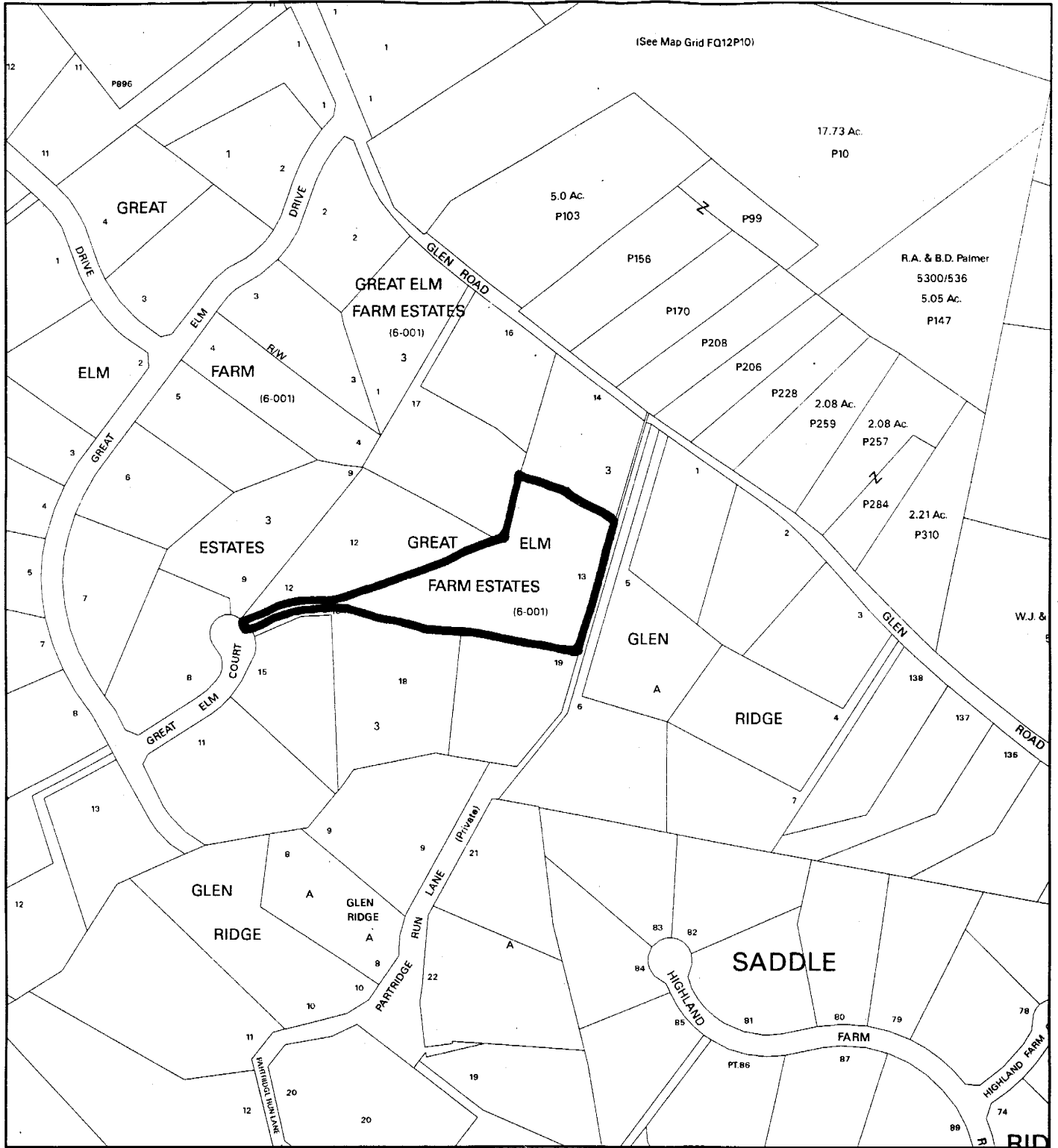


1 inch = 400 feet
1 : 4800

MONTGOMERY COUNTY DEPARTMENT OF PARK AND PLANNING
THE MARYLAND-NATIONAL CAPITAL PARK AND PLANNING COMMISSION

8787 Georgia Avenue - Silver Spring, Maryland 20910-3760

GREAT ELM FARM ESTATES (1-04066)



Map compiled on June 18, 2004 at 10:57 AM | Site located on base sheet no - 215NW11

NOTICE

The planimetric, property, and topographic information shown on this map is based on copyrighted Map Products from the Montgomery County Department of Park and Planning of the Maryland-National Capital Park and Planning Commission, and may not be copied or reproduced without written permission from M-NCPPC.

Property lines are compiled by adjusting the property lines to topography created from aerial photography and should not be interpreted as actual field surveys. Planimetric features were compiled from 1:14400 scale aerial photography using stereo photogrammetric methods.

This map is created from a variety of data sources, and may not reflect the most current conditions in any one location and may not be completely accurate or up to date. All map features are approximately within five feet of their true location. This map may not be the same as a map of the same area plotted at an earlier time as the data is continuously updated. Use of this map, other than for general planning purposes is not recommended. - Copyright 1998

Key Map



N



Research & Technology Center

0 400

1 inch = 400 feet
1 : 4800

MONTGOMERY COUNTY DEPARTMENT OF PARK AND PLANNING
THE MARYLAND-NATIONAL CAPITAL PARK AND PLANNING COMMISSION

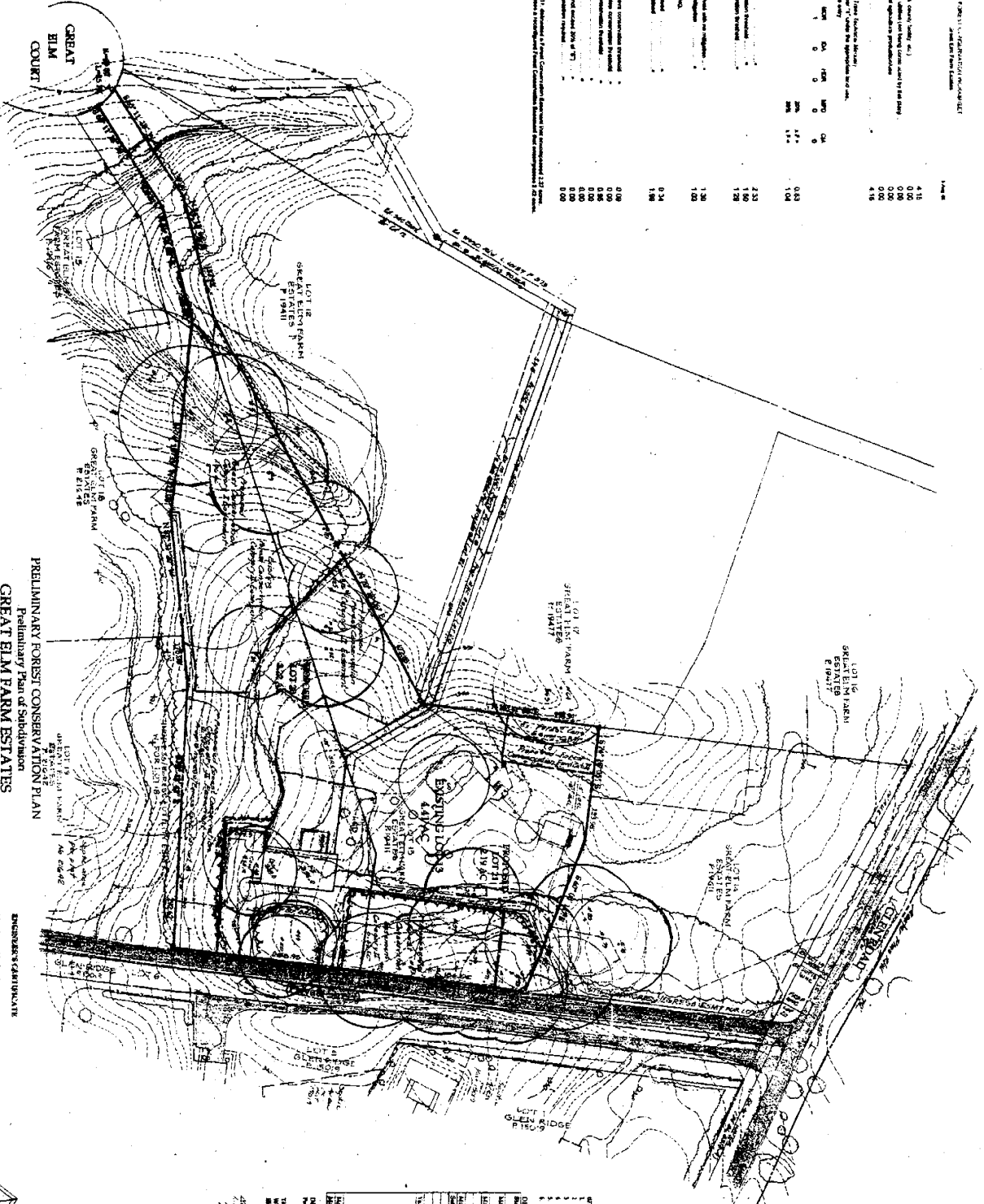
8787 Georgia Avenue - Silver Spring, Maryland 20910-3760

TABLE 1: PERMITS, REGULATIONS AND STANDARDS

Category	Standard	Value
1. Forest Land Use	a. Forest Land Use	4.15
	b. Forest Land Use (Forest Land Use)	0.00
	c. Forest Land Use (Forest Land Use)	0.00
	d. Forest Land Use (Forest Land Use)	0.00
	e. Forest Land Use (Forest Land Use)	0.00
2. Forest Land Use (Forest Land Use)	a. Forest Land Use (Forest Land Use)	4.15
	b. Forest Land Use (Forest Land Use)	0.00
	c. Forest Land Use (Forest Land Use)	0.00
	d. Forest Land Use (Forest Land Use)	0.00
	e. Forest Land Use (Forest Land Use)	0.00

TABLE 2: PERMITS, REGULATIONS AND STANDARDS

Category	Standard	Value
3. Forest Land Use (Forest Land Use)	a. Forest Land Use (Forest Land Use)	4.15
	b. Forest Land Use (Forest Land Use)	0.00
	c. Forest Land Use (Forest Land Use)	0.00
	d. Forest Land Use (Forest Land Use)	0.00
	e. Forest Land Use (Forest Land Use)	0.00
4. Forest Land Use (Forest Land Use)	a. Forest Land Use (Forest Land Use)	4.15
	b. Forest Land Use (Forest Land Use)	0.00
	c. Forest Land Use (Forest Land Use)	0.00
	d. Forest Land Use (Forest Land Use)	0.00
	e. Forest Land Use (Forest Land Use)	0.00



PERMITS, REGULATIONS AND STANDARDS
 STATE OF MARYLAND
 DEPARTMENT OF THE ENVIRONMENT

TABLE 3: PERMITS, REGULATIONS AND STANDARDS

Category	Standard	Value
5. Forest Land Use (Forest Land Use)	a. Forest Land Use (Forest Land Use)	4.15
	b. Forest Land Use (Forest Land Use)	0.00
	c. Forest Land Use (Forest Land Use)	0.00
	d. Forest Land Use (Forest Land Use)	0.00
	e. Forest Land Use (Forest Land Use)	0.00

PRELIMINARY FOREST CONSERVATION PLAN
 Preliminary Plan of Subdivision
 GREAT ELM FARM ESTATES

Block 3, Lot 12
 State of Maryland
 Department of the Environment
 Administration Building
 Annapolis, Maryland

DATE: 1/14/94
 DRAWN BY: [Signature]
 CHECKED BY: [Signature]

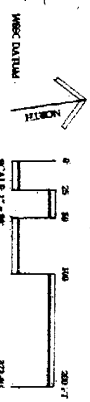


TABLE 4: PERMITS, REGULATIONS AND STANDARDS

Category	Standard	Value
6. Forest Land Use (Forest Land Use)	a. Forest Land Use (Forest Land Use)	4.15
	b. Forest Land Use (Forest Land Use)	0.00
	c. Forest Land Use (Forest Land Use)	0.00
	d. Forest Land Use (Forest Land Use)	0.00
	e. Forest Land Use (Forest Land Use)	0.00

