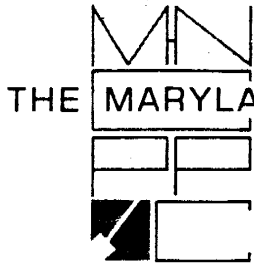


Item # 4



THE MARYLAND-NATIONAL CAPITAL PARK AND PLANNING COMMISSION
8787 Georgia Avenue • Silver Spring, Maryland 20910-3760

MEMORANDUM

DATE: July 9, 2004
TO: Montgomery County Planning Board
FROM: Catherine Conlon
Development Review Division
(301) 495-4542
SUBJECT: Informational Maps for Subdivision Items on the
Planning Board's Agenda for July 15, 2004.

Attached are copies of plan drawings for Item #02, #04 and #10. These subdivision items are scheduled for Planning Board consideration on July 15, 2004. The items are further identified as follows:

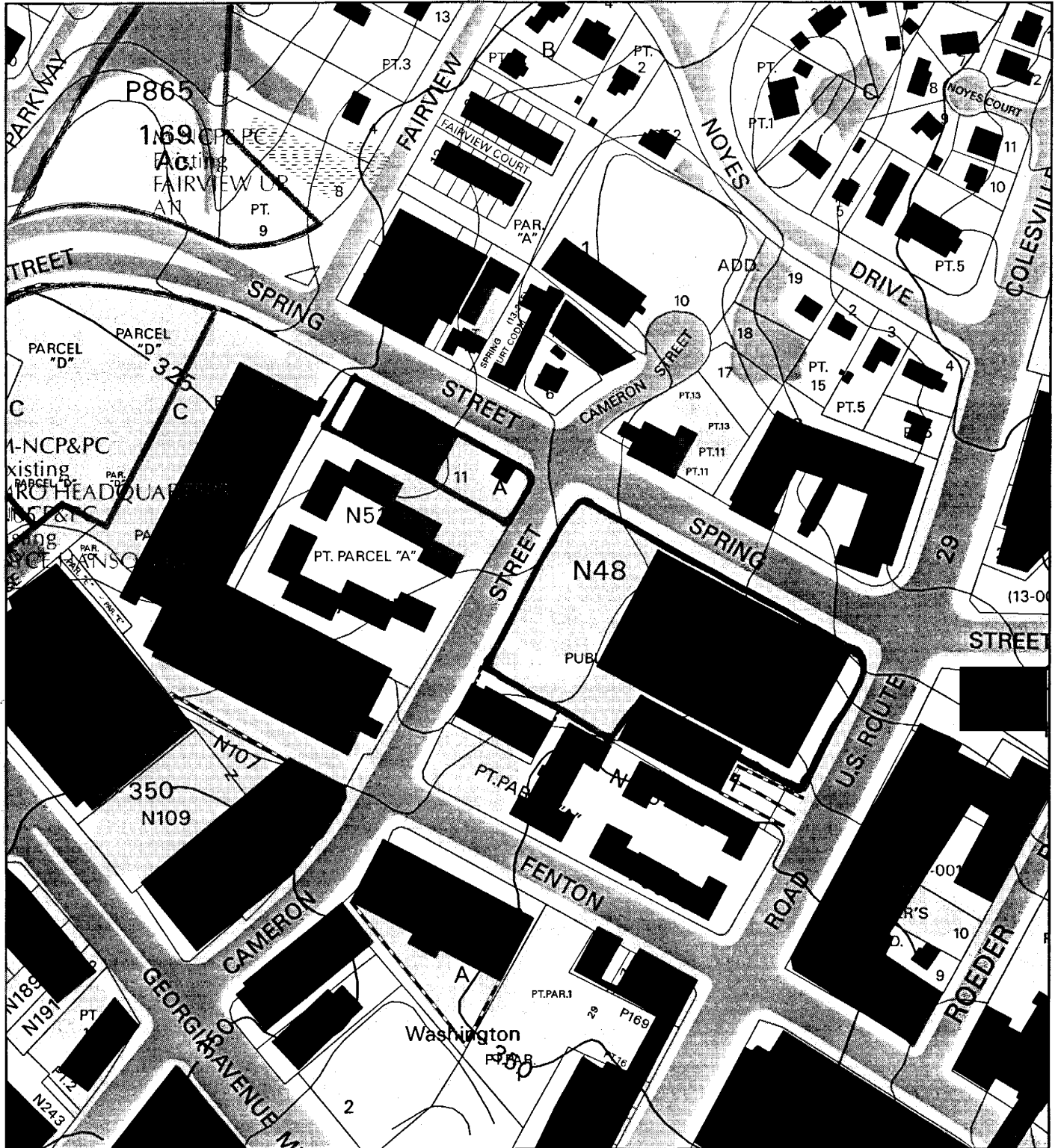
Agenda Item #02 - Subdivision Regulation Waiver SRW-04004
United Therapeutics, Silver Spring
Campus

Agenda Item #04 - Preliminary Plan 1-04087
United Therapeutics, Silver Spring
Campus

Agenda Item #10 - Preliminary Plan 1-04018
Airpark Industrial Park North

Attachment

UNITED THERAPEUTICS, SILVER SPRING CAMPUS (1-04087)



Map compiled on May 18, 2004 at 10:49 AM | Site located on base sheet no - 210NW01

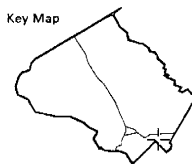
NOTICE

The planimetric, property, and topographic information shown on this map is based on copyrighted Map Products from the Montgomery County Department of Park and Planning of the Maryland - National Capital Park and Planning Commission, and may not be copied or reproduced without written permission from M-NCPPC.

Property lines are compiled by adjusting the property lines to topography created from aerial photography and should not be interpreted as actual field surveys. Planimetric features were compiled from 1:14400 scale aerial photography using stereo photogrammetric methods.

This map is created from a variety of data sources, and may not reflect the most current conditions in any one location and may not be completely accurate or up to date. All map features are approximately within five feet of their true location. This map may not be the same as a map of the same area plotted at an earlier time as the data is continuously updated. Use of this map, other than for general planning purposes is not recommended. - Copyright 1998

Key Map

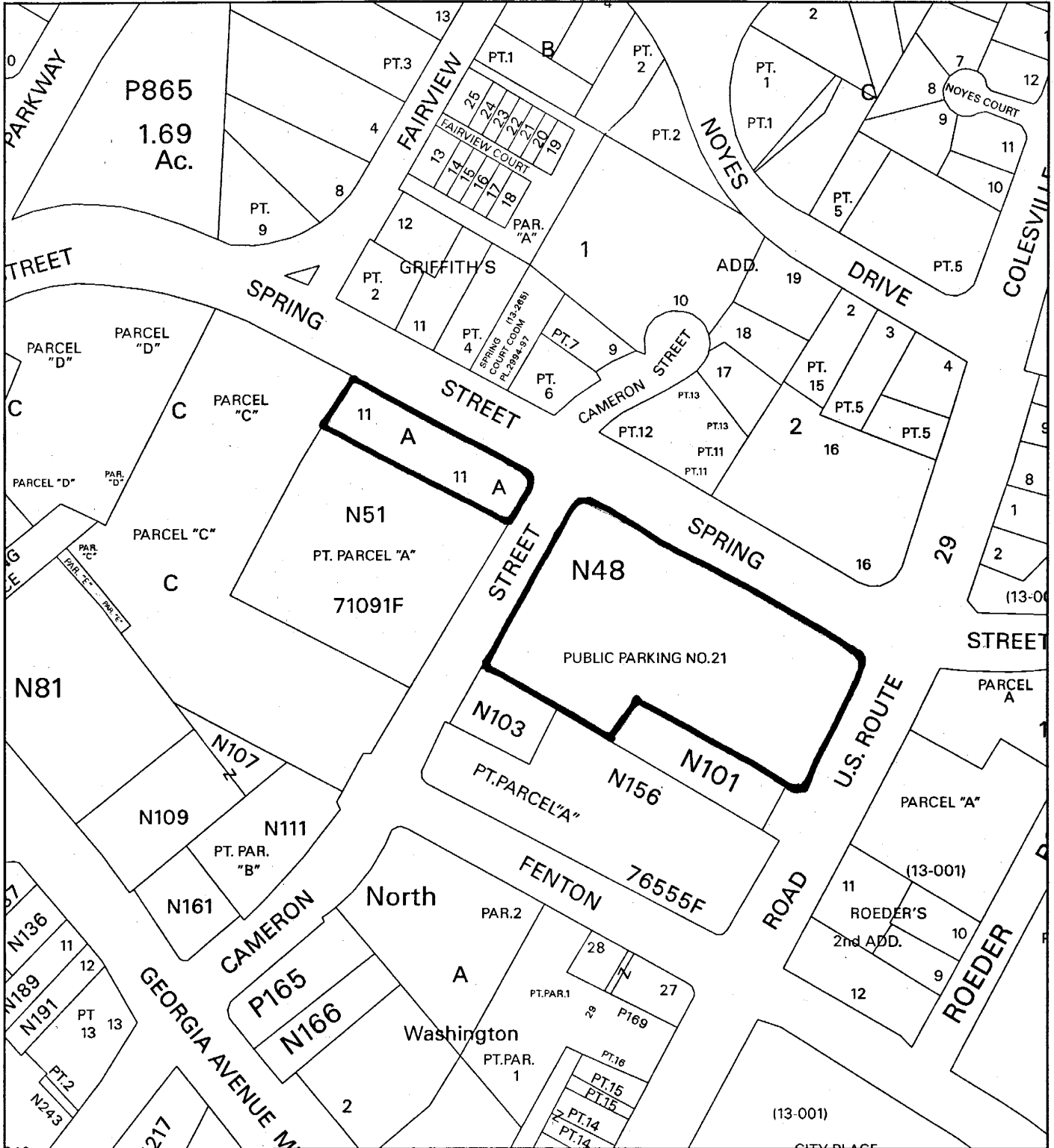


Research & Technology Center

0 200

1 inch = 200 feet
1 : 2400

UNITED THERAPEUTICS, SILVER SPRING CAMPUS (1-04087)



Map compiled on May 18, 2004 at 10:53 AM | Site located on base sheet no - 210NW01

NOTICE

The planimetric, property, and topographic information shown on this map is based on copyrighted Map Products from the Montgomery County Department of Park and Planning of the Maryland-National Capital Park and Planning Commission, and may not be copied or reproduced without written permission from M-NCPPC.

Property lines are compiled by adjusting the property lines to topography created from aerial photography and should not be interpreted as actual field surveys. Planimetric features were compiled from 1:14400 scale aerial photography using stereo photogrammetric methods.

This map is created from a variety of data sources, and may not reflect the most current conditions in any one location and may not be completely accurate or up to date. All map features are approximately within five feet of their true location. This map may not be the same as a map of the same area plotted at an earlier time as the data is continuously updated. Use of this map, other than for general planning purposes is not recommended. - Copyright 1998

Key Map

