

THE MARYLAND-NATIONAL CAPITAL PARK AND PLANNING COMMISSION

8787 Georgia Avenue • Silver Spring, Maryland 20910-3760

M E M O R A N D U M

**DATE:** July 16, 2004  
**TO:** Montgomery County Planning Board  
**FROM:** Catherine Conlon  
Development Review Division  
(301) 495-4542  
**SUBJECT:** Informational Maps for Subdivision Items on the  
Planning Board's Agenda for July 22, 2004.

-----

Attached are copies of plan drawings for Item #01, #16, #17 and #18. These subdivision items are scheduled for Planning Board consideration on July 22, 2004. The items are further identified as follows:

Agenda Item #01 - Preliminary Plan 1-00009  
Armenian Youth Center

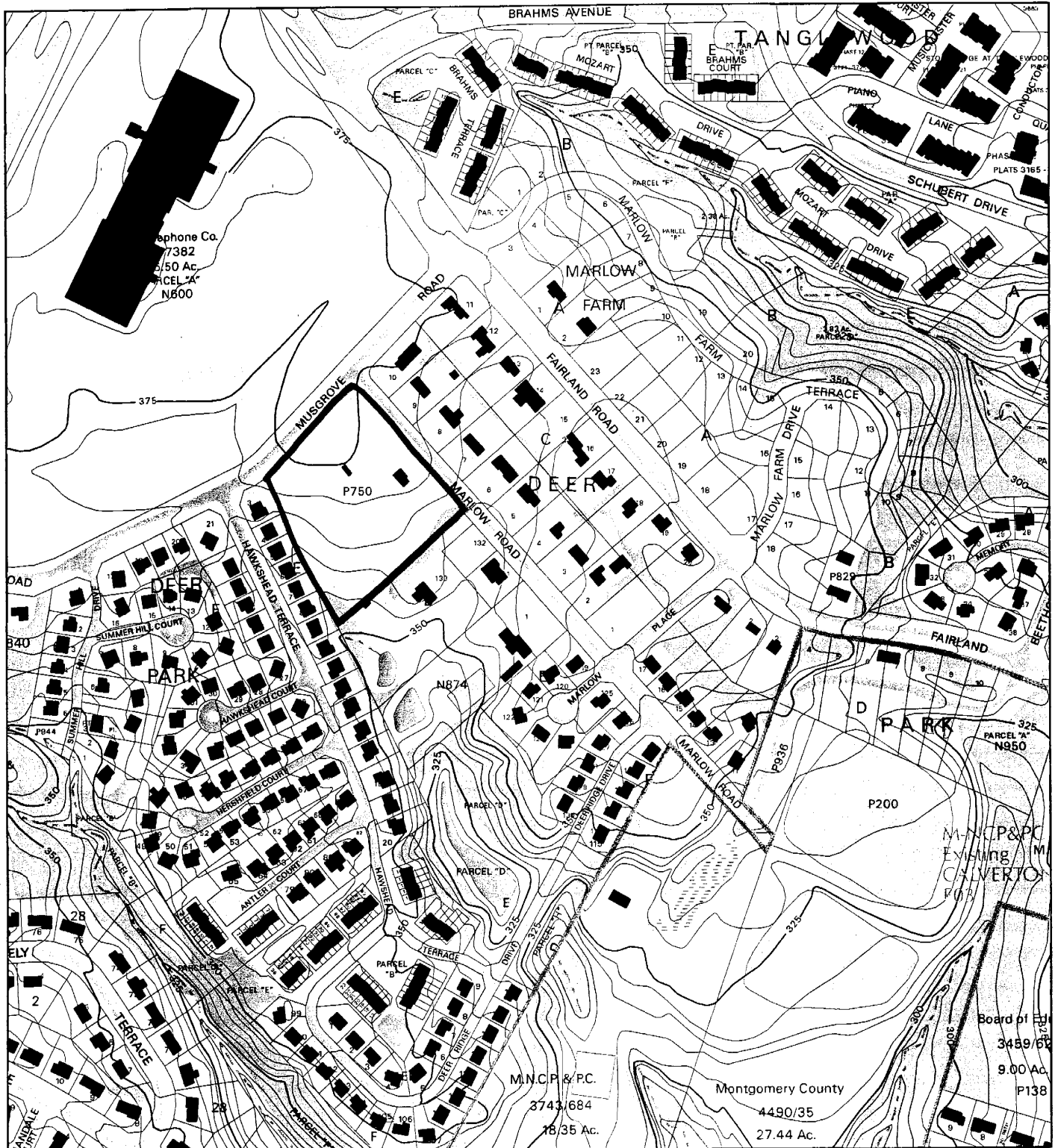
Agenda Item #16 - Preliminary Plan 1-04066  
Great Elm Farm Estates

Agenda Item #17 - Preliminary Plan 1-04090  
Fellowship Meadows

Agenda Item #18 - Preliminary Plan 1-04064  
Deer Park

Attachment

# DEER PARK (1-01064)



Map compiled on July 16, 2004 at 11:40 AM | Site located on base sheet no - 217NE03

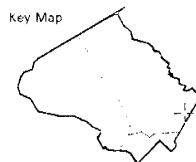
## NOTICE

The planimetric, property, and topographic information shown on this map is based on copyrighted Map Products from the Montgomery County Department of Park and Planning of the Maryland - National Capital Park and Planning Commission, and may not be copied or reproduced without written permission from M-NCPPC.

Property lines are compiled by adjusting the property lines to topography created from aerial photography and should not be interpreted as actual field surveys. Planimetric features were compiled from 1:14400 scale aerial photography using stereo photogrammetric methods.

This map is created from a variety of data sources, and may not reflect the most current conditions in any one location and may not be completely accurate or up to date. All map features are approximately within five feet of their true location. This map may not be the same as a map of the same area plotted at an earlier time as the data is continuously updated. Use of this map, other than for general planning purposes is not recommended. - Copyright 1998

Key Map



N

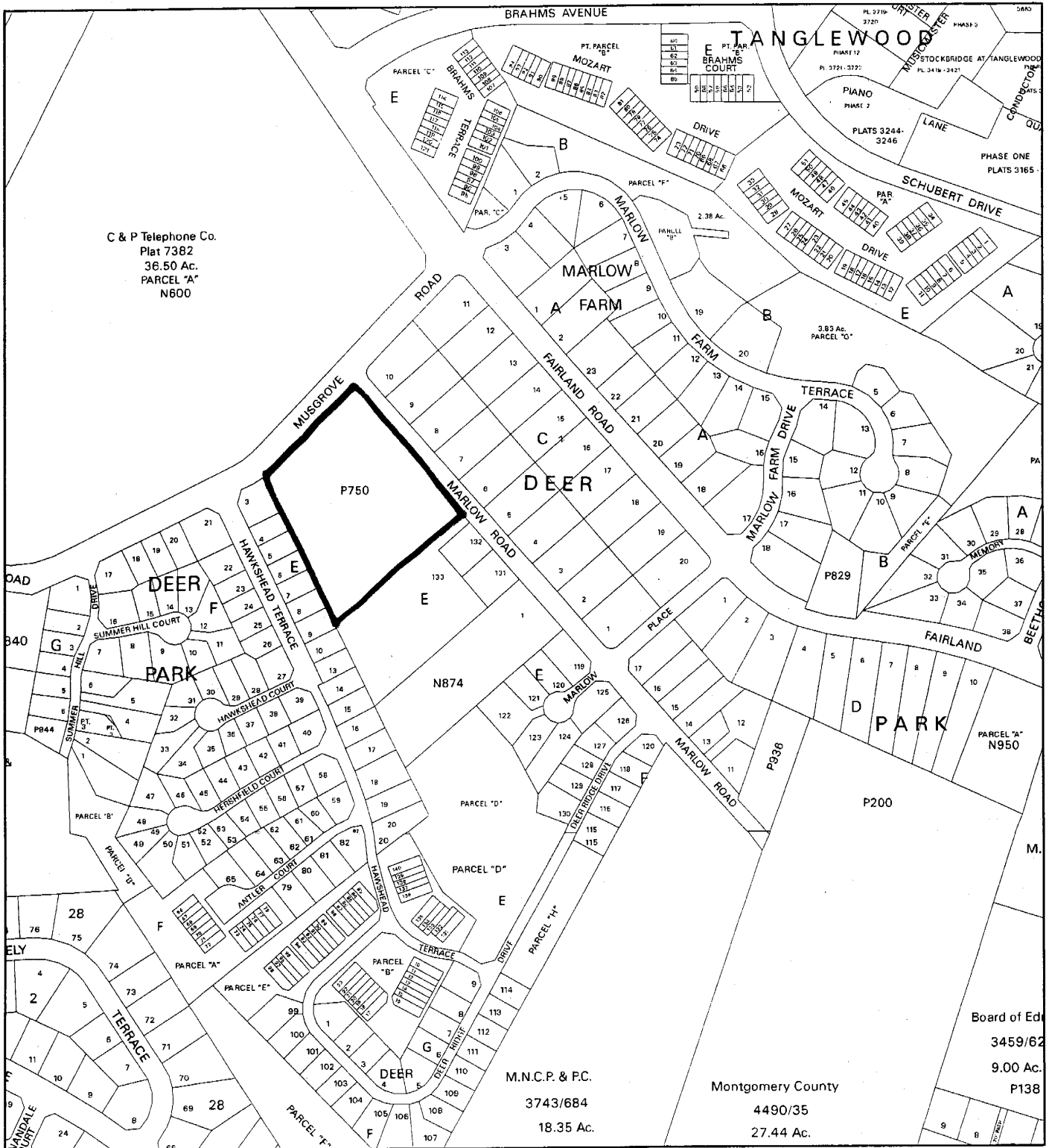


Research & Technology Center

0 400

1 inch = 400 feet  
1 : 4800

# DEER PARK (1-01064)



Map compiled on July 16, 2004 at 11:28 AM | Site located on base sheet no - 217NE03

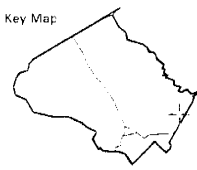
## NOTICE

The planimetric, property, and topographic information shown on this map is based on copyrighted Map Products from the Montgomery County Department of Park and Planning of the Maryland-National Capital Park and Planning Commission, and may not be copied or reproduced without written permission from M-NCPPC.

Property lines are compiled by adjusting the property lines to topography created from aerial photography and should not be interpreted as actual field surveys. Planimetric features were compiled from 1:14400 scale aerial photography using stereo photogrammetric methods.

This map is created from a variety of data sources, and may not reflect the most current conditions in any one location and may not be completely accurate or up to date. All map features are approximately within five feet of their true location. This map may not be the same as a map of the same area plotted at an earlier time as the data is continuously updated. Use of this map, other than for general planning purposes is not recommended. - Copyright 1998

Key Map



N



Research & Technology Center

0 400

1 inch = 400 feet  
1 : 4800



VICINITY MAP  
SCALE: 1" = 200'

**GENERAL NOTES**

1. ALL LOT DIMENSIONS ARE AS SHOWN ON THIS PLAN.
2. ALL LOT DIMENSIONS ARE AS SHOWN ON THIS PLAN.
3. ALL LOT DIMENSIONS ARE AS SHOWN ON THIS PLAN.
4. ALL LOT DIMENSIONS ARE AS SHOWN ON THIS PLAN.
5. ALL LOT DIMENSIONS ARE AS SHOWN ON THIS PLAN.
6. ALL LOT DIMENSIONS ARE AS SHOWN ON THIS PLAN.
7. ALL LOT DIMENSIONS ARE AS SHOWN ON THIS PLAN.
8. ALL LOT DIMENSIONS ARE AS SHOWN ON THIS PLAN.
9. ALL LOT DIMENSIONS ARE AS SHOWN ON THIS PLAN.
10. ALL LOT DIMENSIONS ARE AS SHOWN ON THIS PLAN.

**APPLICANT**

DEVELOPMENT PROJECTS, L.L.C.  
1117 MARLOW ROAD  
BALTIMORE, MD 21204  
CONTACT: (410) 551-1111

**ENGINEER'S CERTIFICATION**

I HEREBY CERTIFY THAT THE INFORMATION CONTAINED HEREIN IS CORRECT TO THE BEST OF MY KNOWLEDGE AND BELIEF AND THAT I AM A LICENSED PROFESSIONAL ENGINEER.

Michael J. Kay  
Professional Engineer  
No. 11700  
MD REGISTRATION NO. 11700

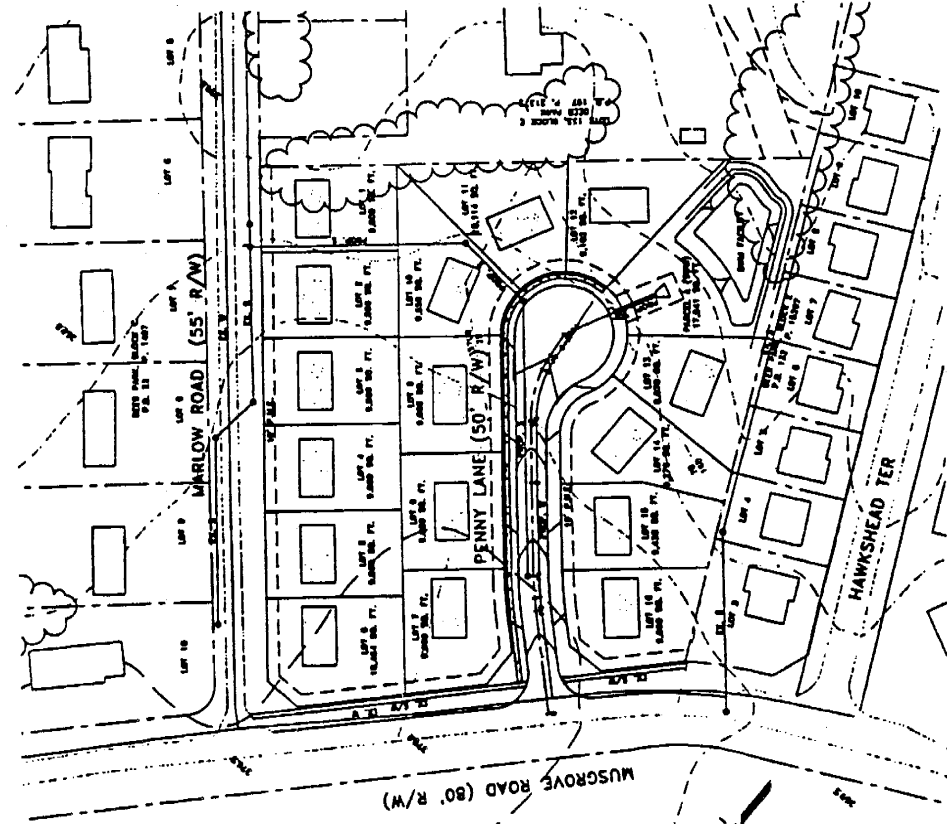


NO.	DATE	REVISION

**'PRELIMINARY' PLAN**  
**DEER PARK (HAYNES PROPERTY)**  
**TAX MAP KR41, PARCEL 750**

SECTION DISTRICT NO. 05  
MONTGOMERY COUNTY, MARYLAND  
**Michael J. Kay Engineers, P.C.**

DATE	SCALE	PROJECT NO.	SHEET NO.



PROPOSED  
MUSGROVE ROAD  
ROAD CENTER  
LINE