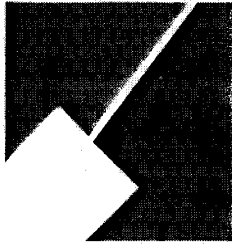


Item #4

M-NCPPC



MONTGOMERY COUNTY DEPARTMENT OF PARK AND PLANNING

THE MARYLAND-NATIONAL CAPITAL
PARK AND PLANNING COMMISSION

8787 Georgia Avenue
Silver Spring, Maryland 20910-3760
301-495-4500, www.mncppc.org

M E M O R A N D U M

DATE: September 17, 2004
TO: Montgomery County Planning Board
FROM: Catherine Conlon
Development Review Division
(301) 495-4542
SUBJECT: Informational Maps for Subdivision Items on the
Planning Board's Agenda for September 23, 2004.

Attached are copies of plan drawings for Item #04, #06, #07, #08, #09, #10 and #12. These subdivision items are scheduled for Planning Board consideration on September 23, 2004. The items are further identified as follows:

Agenda Item #04 - Preliminary Plan 1-04039A
Silver Spring Gateway

Agenda Item #06 - Preliminary Plan 1-98092A
Rock Spring Center

Agenda Item #07 - Preliminary Plan 1-04079
Won Buddhism Property

Agenda Item #08 - Preliminary Plan 1-04061
Radwick Lane Property

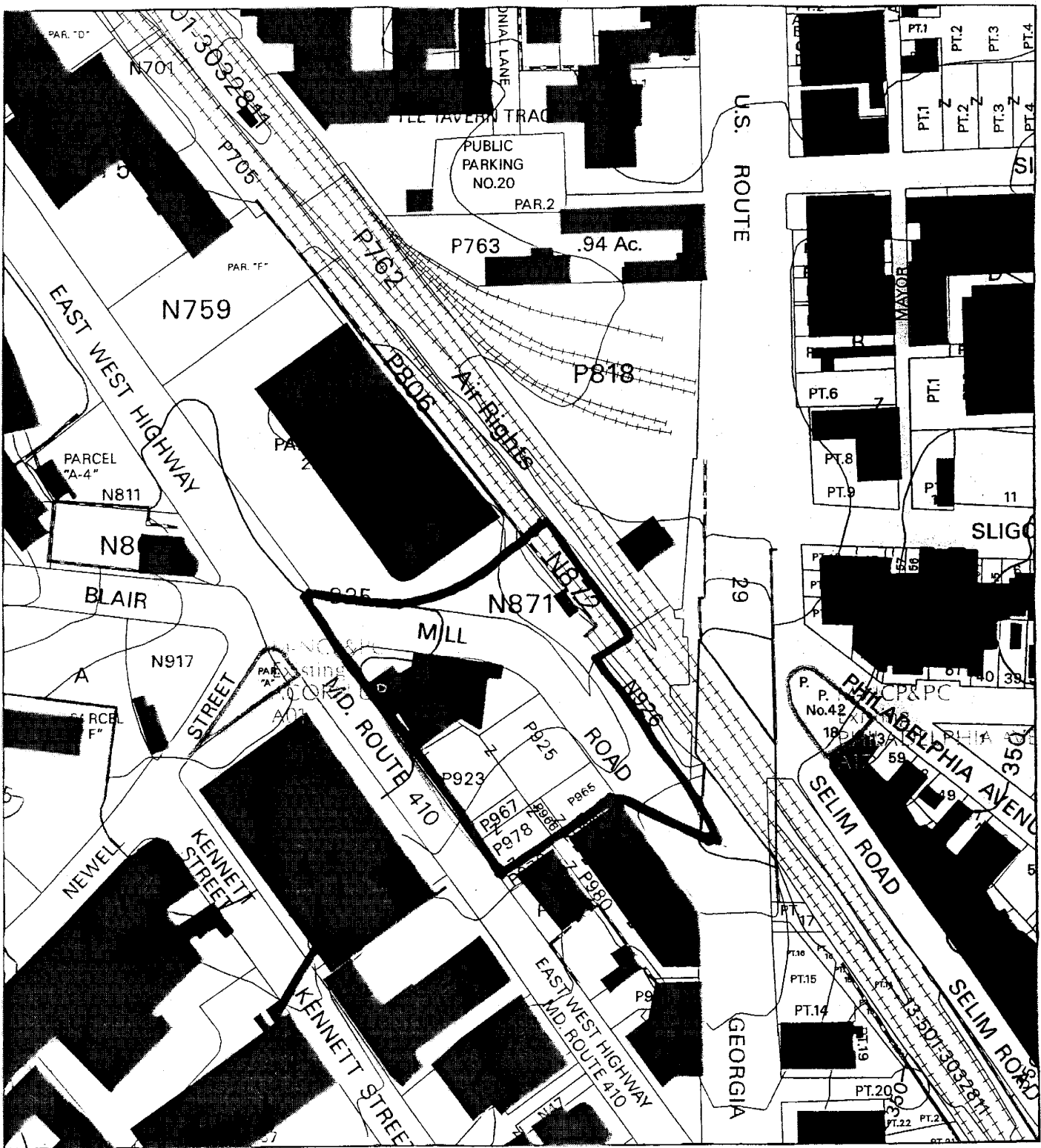
Agenda Item #09 - Preliminary Plan 1-04072
Twin Valley Lane

Agenda Item #10 - Preliminary Plan 1-04051
R.T. Schaeffer Property

Agenda Item #12 - Preliminary Plan 1-04040
Fiddler Park

Attachment

SILVER SPRING GATEWAY (1-04039A) (9-04002A)



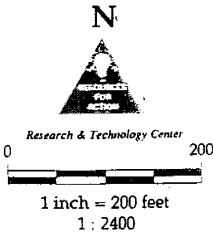
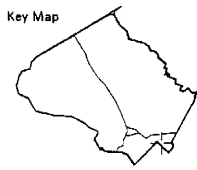
Map compiled on June 15, 2004 at 10:19 AM | Site located on base sheet no - 210NW01

NOTICE

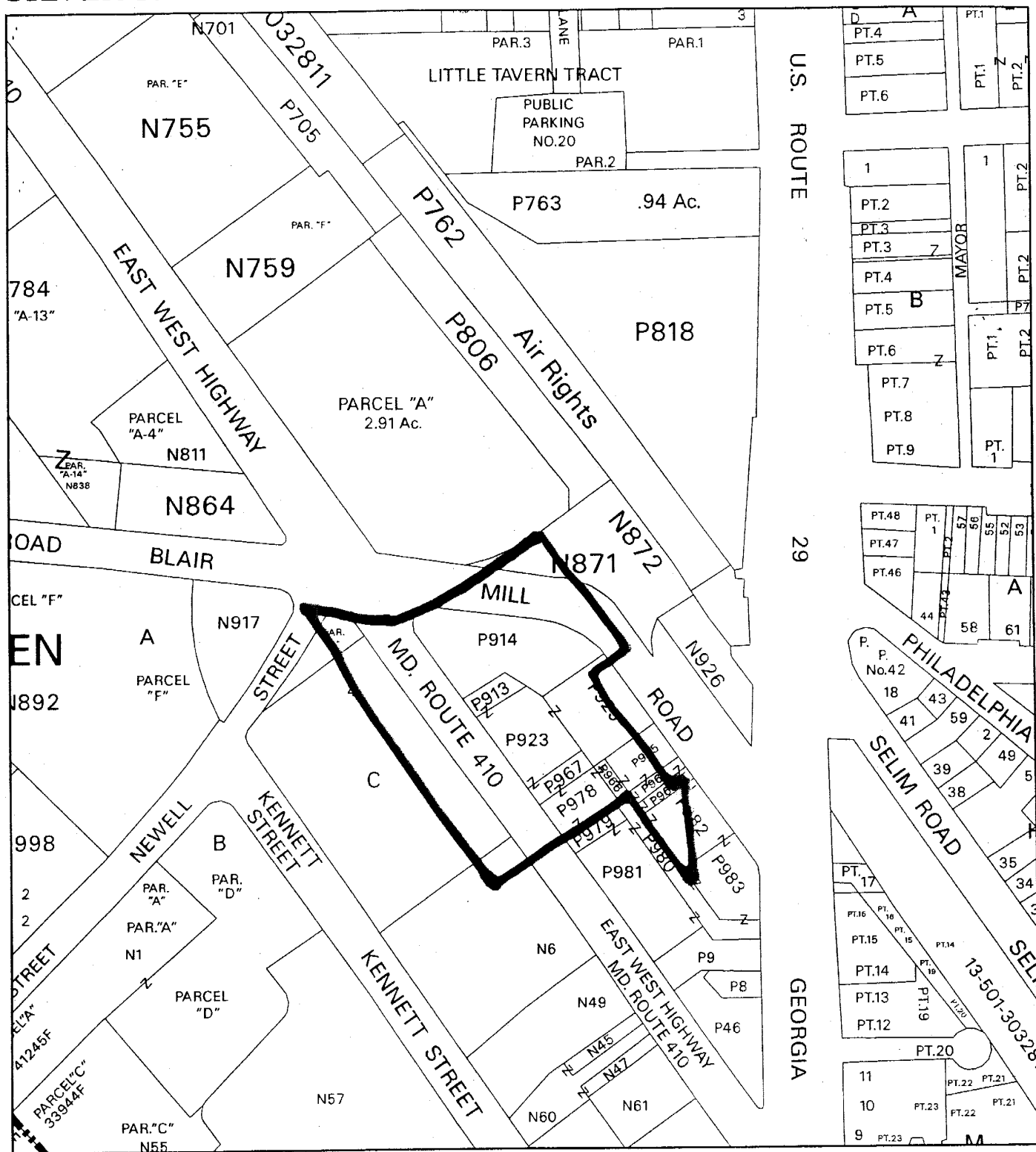
The planimetric, property, and topographic information shown on this map is based on copyrighted Map Products from the Montgomery County Department of Park and Planning of the Maryland National Capital Park and Planning Commission, and may not be copied or reproduced without written permission from M-NCPPC.

Property lines are compiled by adjusting the property lines to topography created from aerial photography and should not be interpreted as actual field surveys. Planimetric features were compiled from 1:14400 scale aerial photography using stereo photogrammetric methods.

This map is created from a variety of data sources, and may not reflect the most current conditions in any one location and may not be completely accurate or up to date. All map features are approximately within five feet of their true location. This map may not be the same as a map of the same area plotted at an earlier time as the data is continuously updated. Use of this map, other than for general planning purposes is not recommended. - Copyright 1998



SILVER SPRING GATEWAY (8-05001)



Map compiled on September 17, 2004 at 10:15 AM | Site located on base sheet no - 210NW01

NOTICE

The planimetric, property, and topographic information shown on this map is based on copyrighted Map Products from the Montgomery County Department of Park and Planning of the Maryland-National Capital Park and Planning Commission, and may not be copied or reproduced without written permission from M-NCPPC.

Property lines are compiled by adjusting the property lines to topography created from aerial photography and should not be interpreted as actual field surveys. Planimetric features were compiled from 1:14400 scale aerial photography using stereoc photogrammetric methods.

This map is created from a variety of data sources, and may not reflect the most current conditions in any one location and may not be completely accurate or up to date. All map features are approximately within five feet of their true location. This map may not be the same as a map of the same area plotted at an earlier time as the data is continuously updated. Use of this map, other than for general planning purposes is not recommended. - Copyright 1998

MONTGOMERY COUNTY DEPARTMENT OF PARK AND PLANNING
 THE MARYLAND-NATIONAL CAPITAL PARK AND PLANNING COMMISSION
 8787 Georgia Avenue - Silver Spring, Maryland 20910-3760

