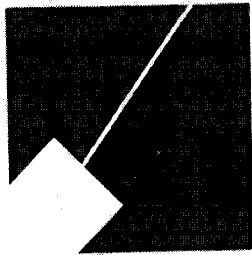


Item # 7

M-NCPPC



MONTGOMERY COUNTY DEPARTMENT OF PARK AND PLANNING

THE MARYLAND-NATIONAL CAPITAL
PARK AND PLANNING COMMISSION

8787 Georgia Avenue
Silver Spring, Maryland 20910-3760

M E M O R A N D U M

DATE: October 1, 2004
TO: Montgomery County Planning Board
FROM: Catherine Conlon
Development Review Division
(301) 495-4542
SUBJECT: Informational Maps for Subdivision Items on the
Planning Board's Agenda for October 07, 2004.

Attached are copies of plan drawings for item #06, #07, and #08. These subdivision items are scheduled for Planning Board consideration on October 07, 2004. The items are further identified as follows:

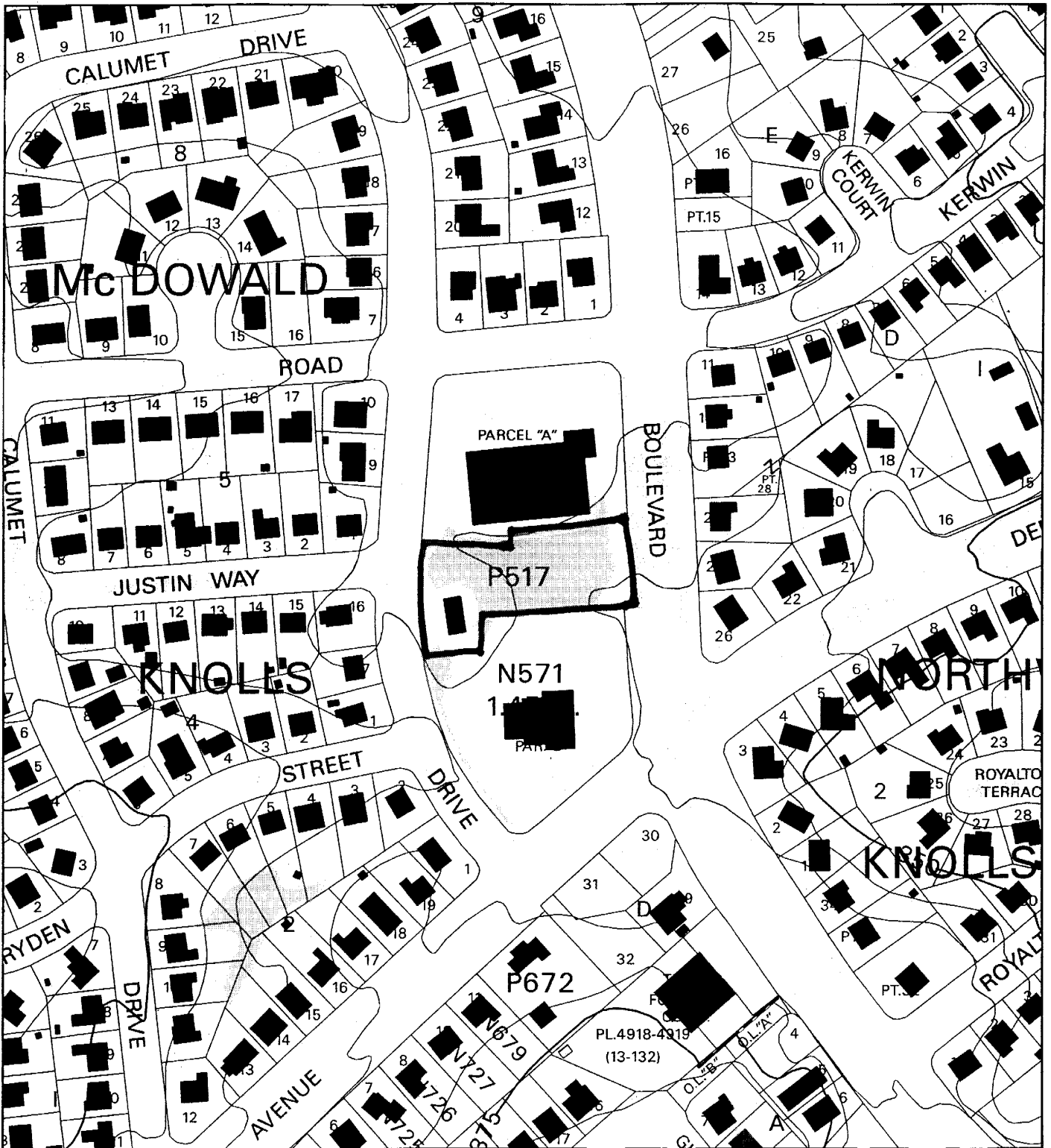
Agenda Item #06 - Preliminary Plan 1-05011
Falconhurst

Agenda Item #07 - Preliminary Plan 1-04076
McDonald Knolls

Agenda Item #08 - Preliminary Plan 1-05013
Woodside

Attachment

MCDONALD KNOLLS (PROPOSED LOTS 1 - 4) (1-04076)



Map compiled on April 21, 2004 at 3:09 PM | Site located on base sheet no - 213NW01

NOTICE

The planimetric, property, and topographic information shown on this map is based on copyrighted Map Products from the Montgomery County Department of Park and Planning of the Maryland-National Capital Park and Planning Commission, and may not be copied or reproduced without written permission from M-NCPPC.

Property lines are compiled by adjusting the property lines to topography created from aerial photography and should not be interpreted as actual field surveys. Planimetric features were compiled from 1:14400 scale aerial photography using stereo photogrammetric methods.

This map is created from a variety of data sources, and may not reflect the most current conditions in any one location and may not be completely accurate or up to date. All map features are approximately within five feet of their true location. This map may not be the same as a map of the same area plotted at an earlier time as the data is continuously updated. Use of this map, other than for general planning purposes is not recommended. - Copyright 1998

Key Map



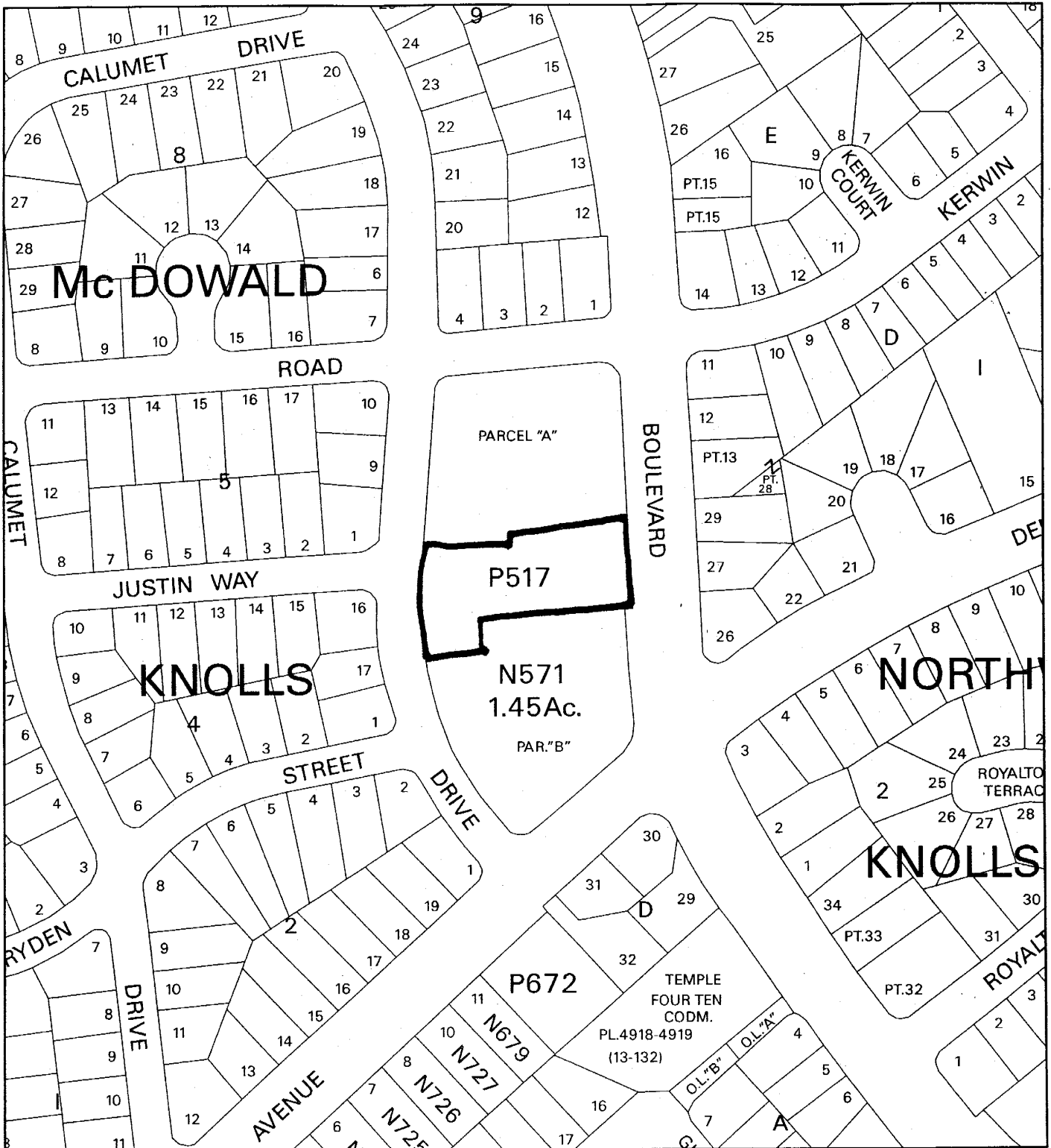
Research & Technology Center

0 200

1 inch = 200 feet

1 : 2400

MCDONALD KNOLLS (PROPOSED LOTS 1 - 4) (1-04076)



Map compiled on April 21, 2004 at 3:13 PM | Site located on base sheet no - 213NW01

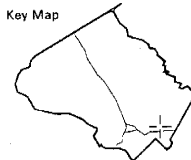
NOTICE

The planimetric, property, and topographic information shown on this map is based on copyrighted Map Products from the Montgomery County Department of Park and Planning of the Maryland-National Capital Park and Planning Commission, and may not be copied or reproduced without written permission from M-NCPPC.

Property lines are compiled by adjusting the property lines to topography created from aerial photography and should not be interpreted as actual field surveys. Planimetric features were compiled from 1:14400 scale aerial photography using stereo photogrammetric methods.

This map is created from a variety of data sources, and may not reflect the most current conditions in any one location and may not be completely accurate or up to date. All map features are approximately within five feet of their true location. This map may not be the same as a map of the same area plotted at an earlier time as the data is continuously updated. Use of this map, other than for general planning purposes is not recommended. - Copyright 1998

Key Map



Research & Technology Center

0 200

1 inch = 200 feet
1 : 2400

