

# 8607 CEDAR



Map compiled on May 20, 2004 at 11:08 AM | Site located on base sheet no - 210NW01

## NOTICE

The planimetric, property, and topographic information shown on this map is based on copyrighted Map Products from the Montgomery County Department of Park and Planning of the Maryland-National Capital Park and Planning Commission, and may not be copied or reproduced without written permission from M-NCPPC.

Property lines are compiled by adjusting the property lines to topography created from aerial photography and should not be interpreted as actual field surveys. Planimetric features were compiled from 1:14400 scale aerial photography using stereo photogrammetric methods.

This map is created from a variety of data sources, and may not reflect the most current conditions in any one location and may not be completely accurate or up to date. All map features are approximately within five feet of their true location. This map may not be the same as a map of the same area plotted at an earlier time as the data is continuously updated. Use of this map, other than for general planning purposes is not recommended. - Copyright 1998

Key Map



N



1 inch = 200 feet  
1:2400

**MONTGOMERY COUNTY DEPARTMENT OF PARK AND PLANNING**  
THE MARYLAND-NATIONAL CAPITAL PARK AND PLANNING COMMISSION

8787 Georgia Avenue - Silver Spring, Maryland 20910-5780

AM

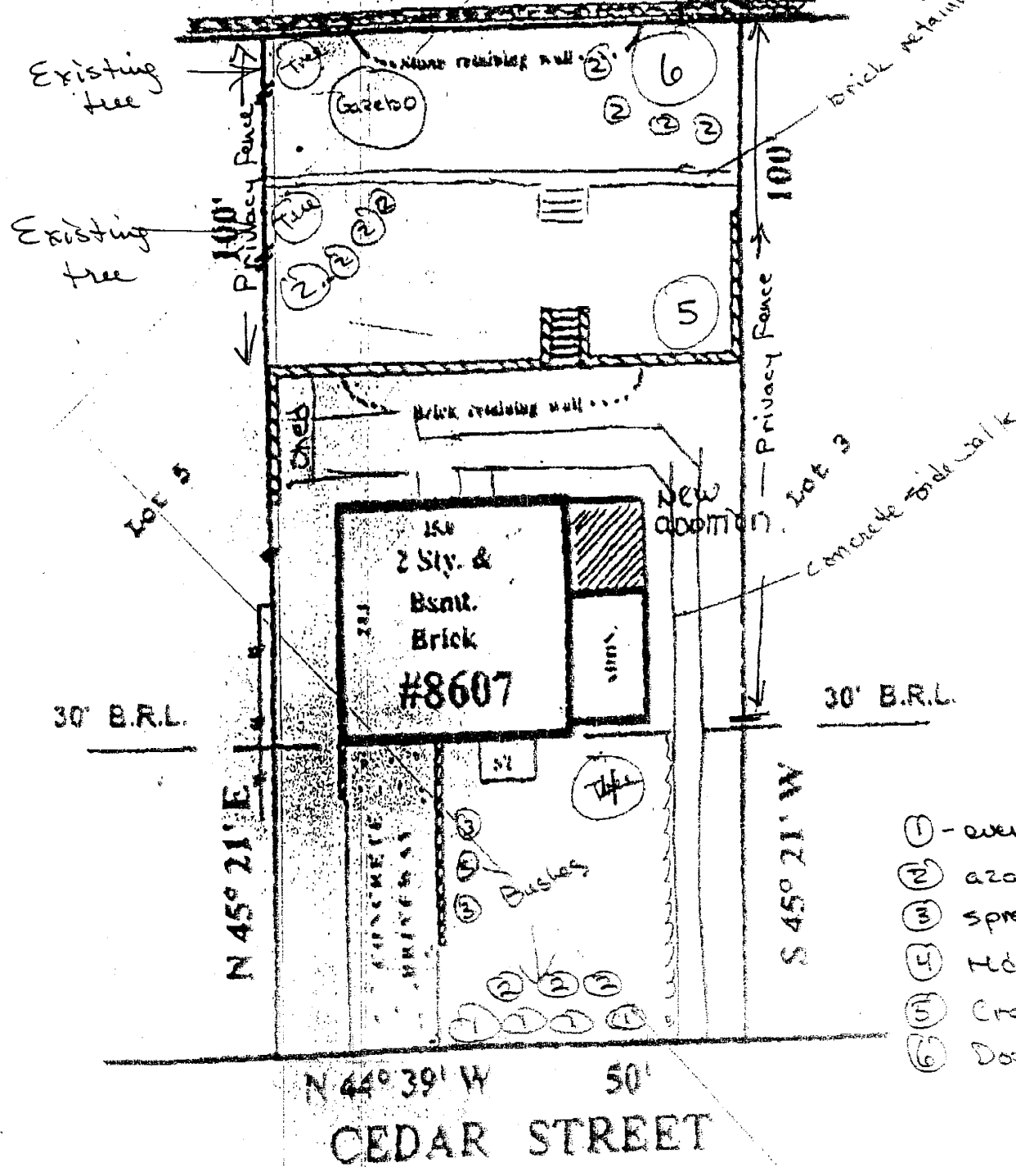
# Lot 4

5000 Sq. Ft.

Approximate depiction of fences and retaining walls

Plat Number 22270  
(January 2002)

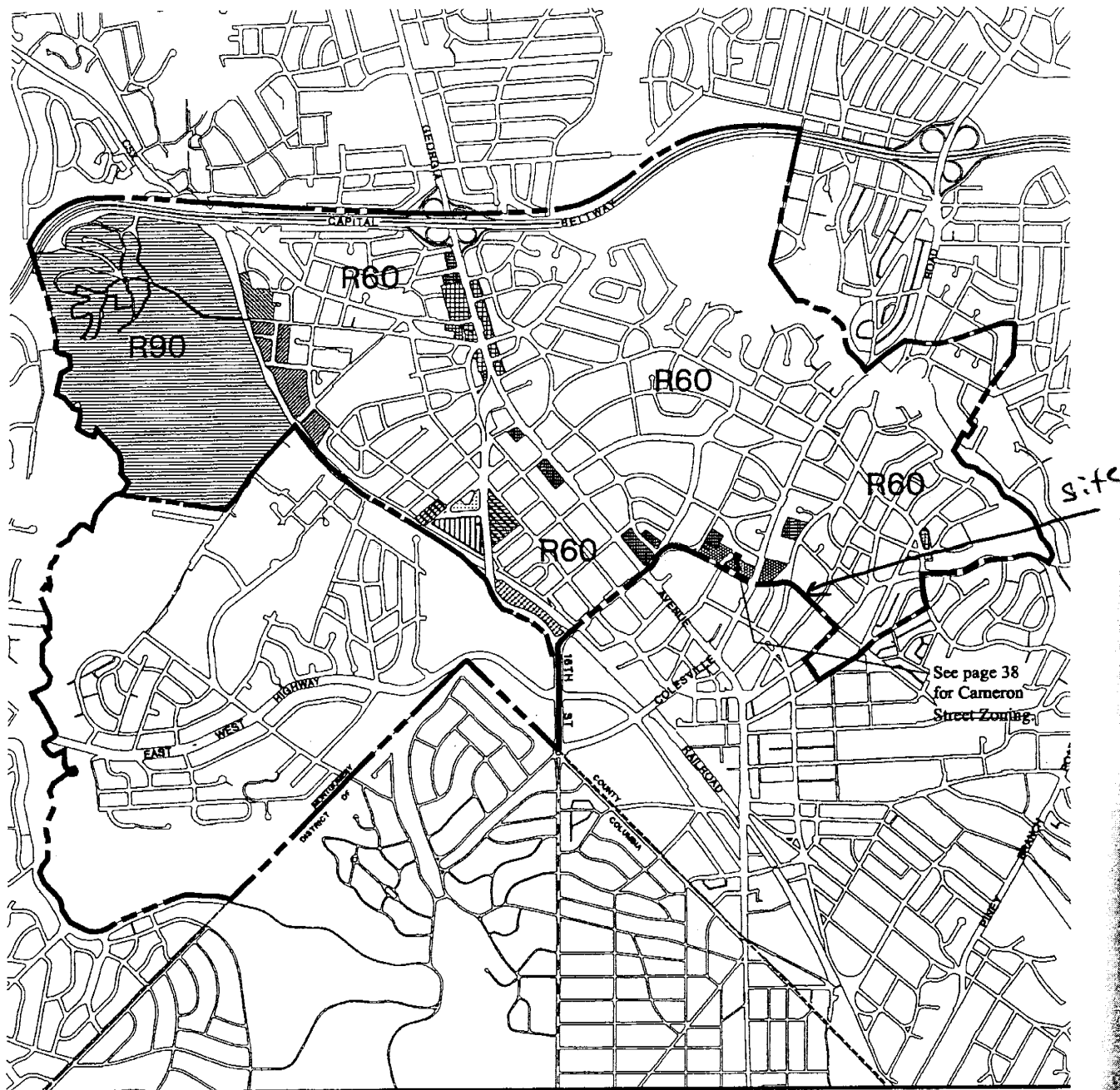
S 44° 39' E 50'



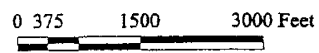
- ① - evergreen bushes
- ② - azaleas
- ③ - spreading yews
- ④ - Hd maple tree
- ⑤ - Grape myrtle
- ⑥ - Dogwood

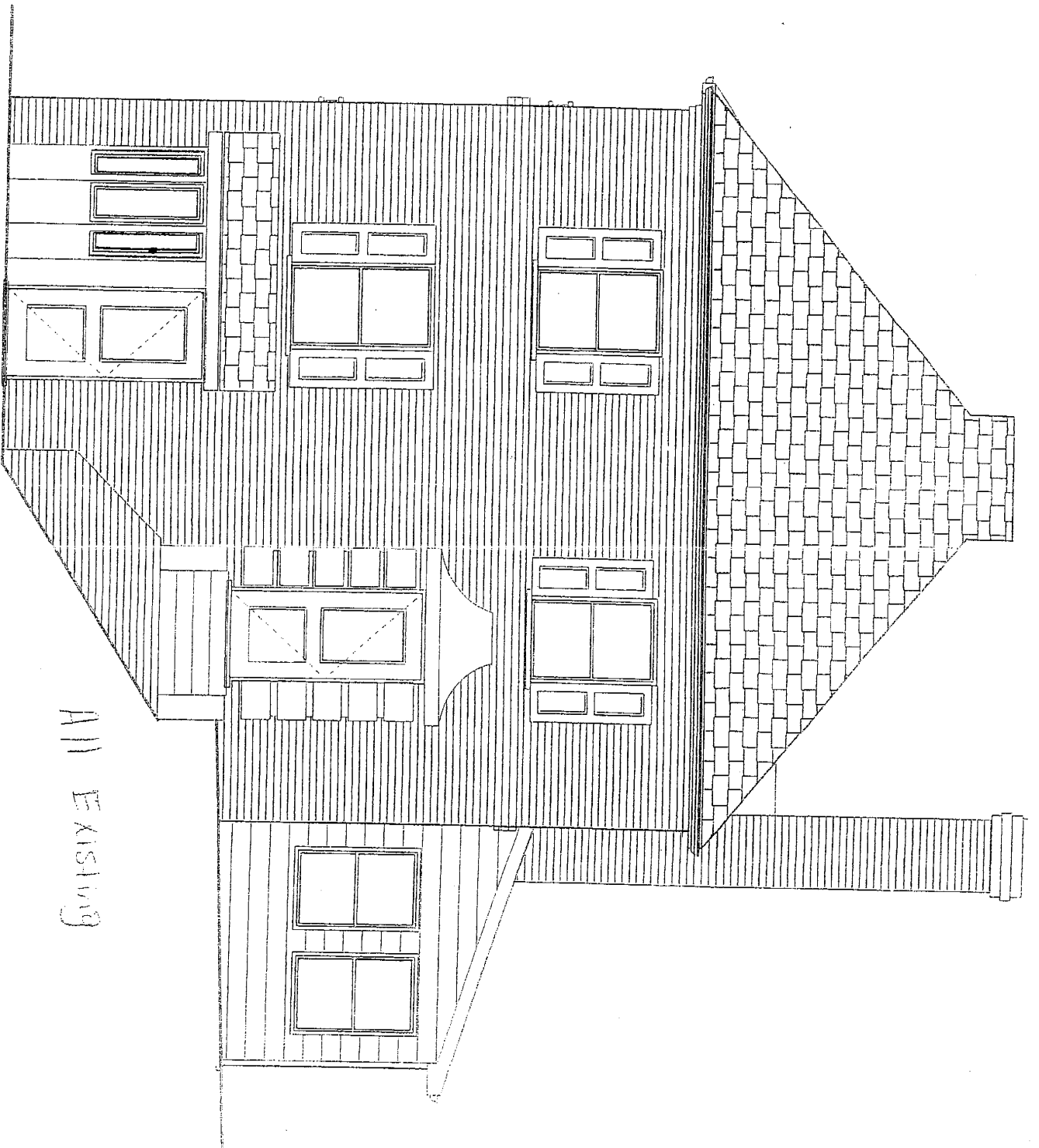
# Existing and Proposed Zoning in North Silver Spring

Map 10



	Master Plan Boundary		R60	Single Family Residential
	C1 Local Commercial		R90	Single Family Residential
	C2 General Commercial		RT8	Townhouses
	C4 Highway Commercial		RT10	Townhouses
	CO Commercial Office		RT12.5	Townhouses
	CT Commercial Transition		R20	Multi - Family Residential
	I1 Light Industrial		RH	Multi - Family Residential



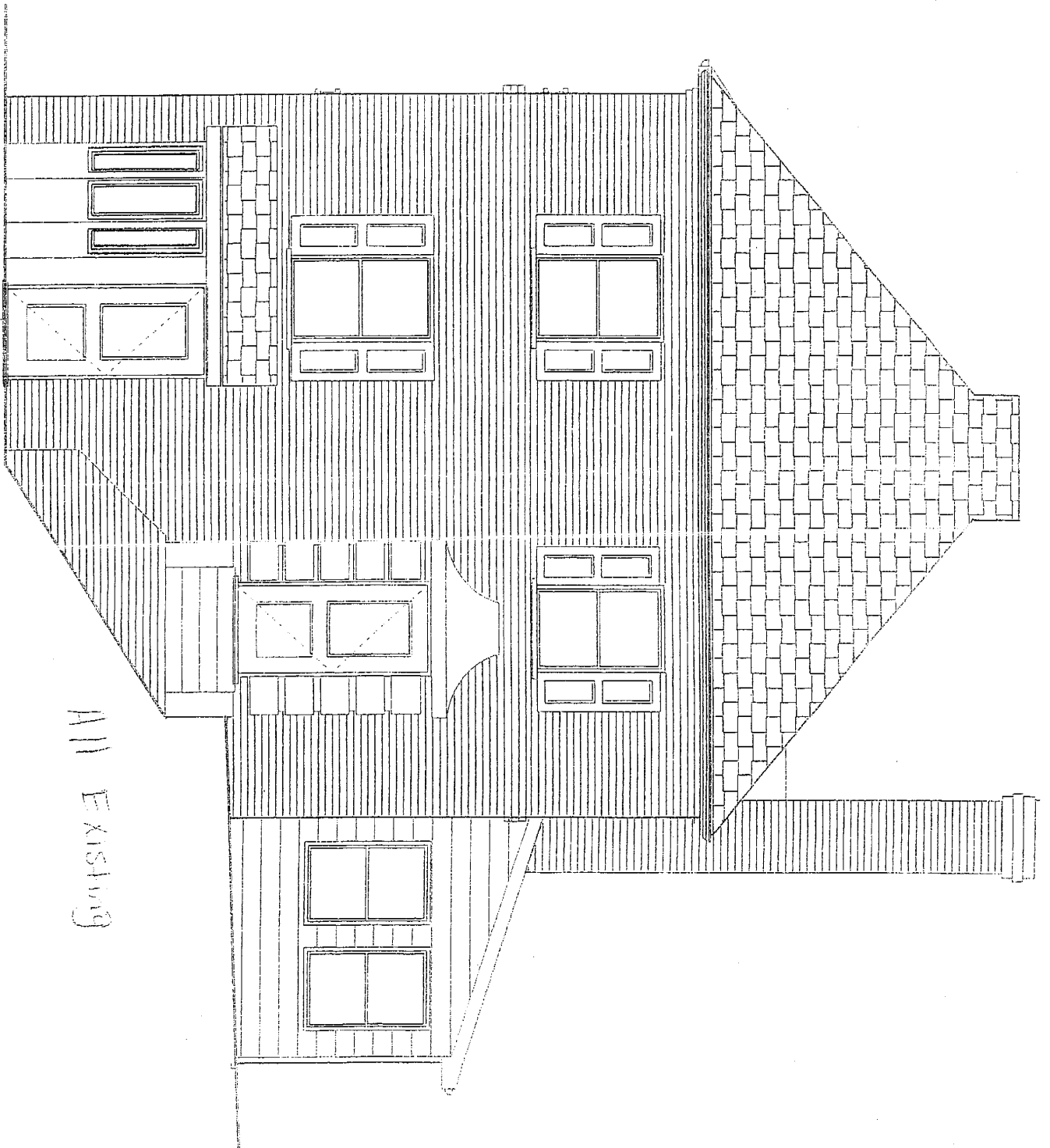


All Existing

# FRONT ELEVATION

SCALE: 1/4" = 1'-0"

A4



FRONT ELEVATION

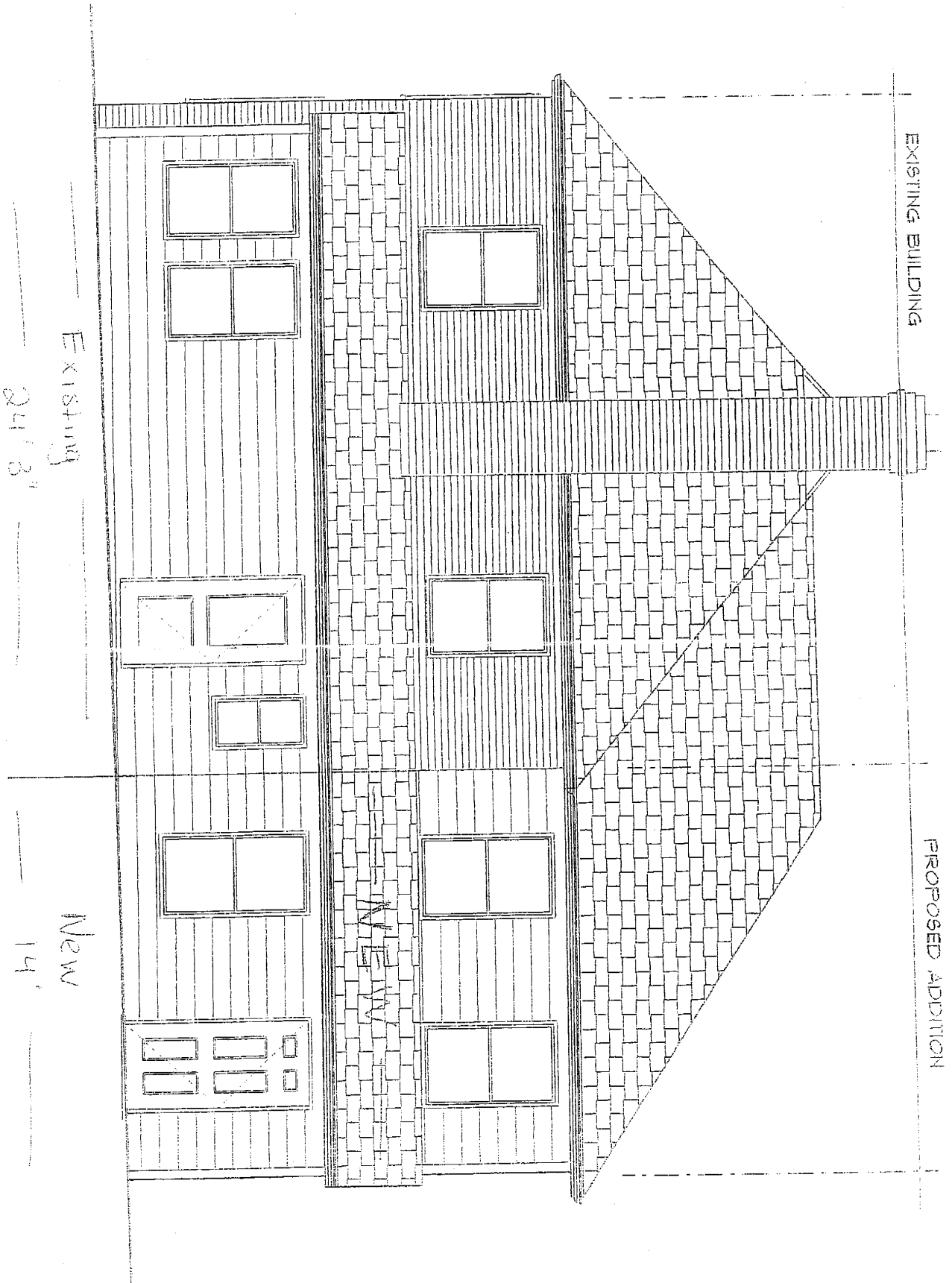
SCALE: 1/4" = 1'-0"

All Existing

AS

EXISTING BUILDING

PROPOSED ADDITION



Existing

24' 3"

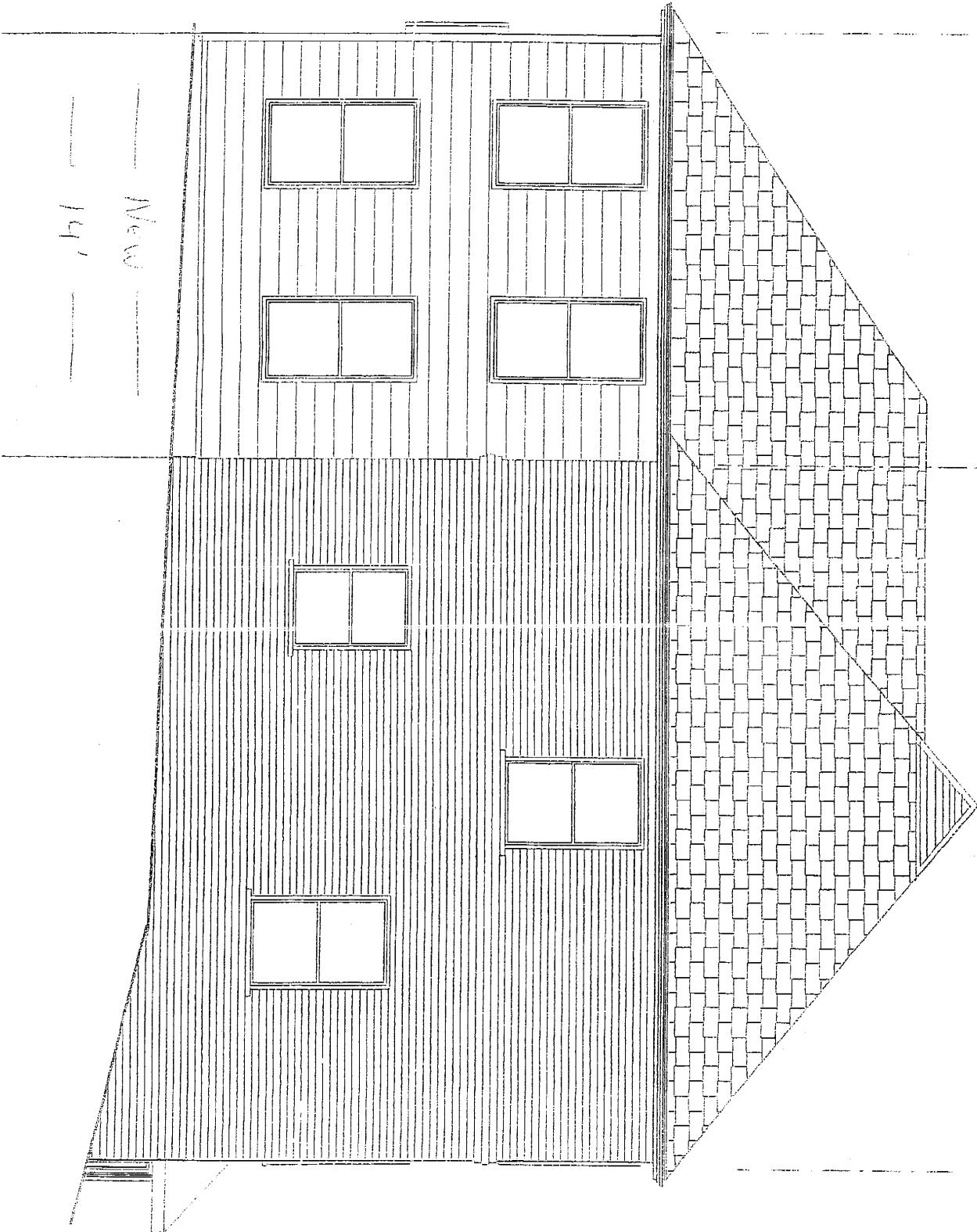
New

14'

NEW

# RIGHT SIDE ELEVATION

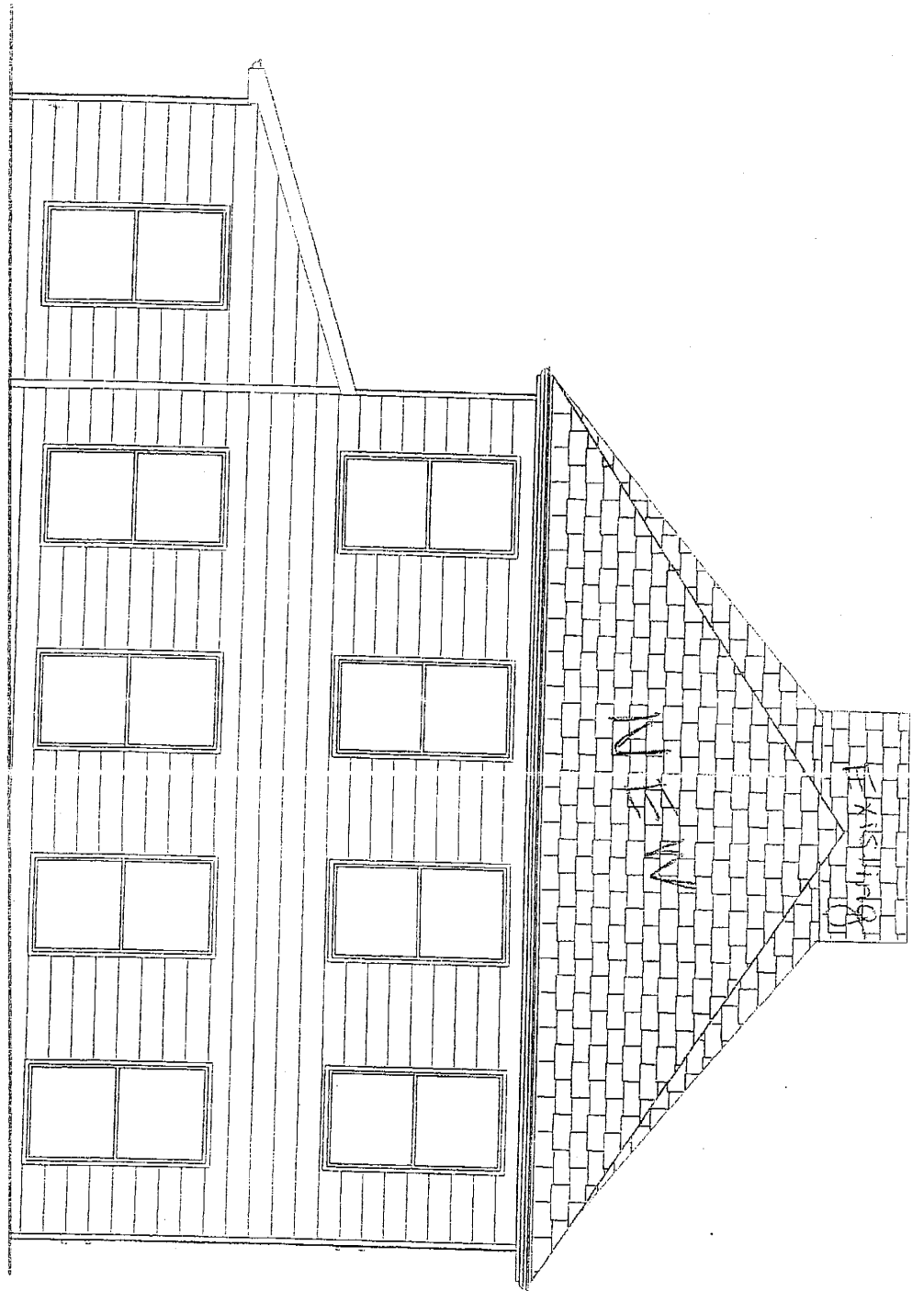
SCALE: 1/4" = 1'-0"



New  
14'

LEFT SIDE ELEVATION

SCALE: 1/4" = 1'-0"



32' 1 1/4"

**REAR ELEVATION**  
SCALE: 1/4" = 1'-0"