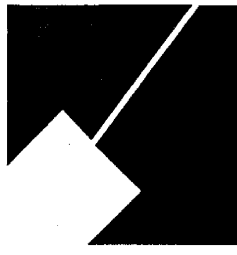


Item # 13

M-NCPPC



MONTGOMERY COUNTY DEPARTMENT OF PARK AND PLANNING

THE MARYLAND-NATIONAL CAPITAL
PARK AND PLANNING COMMISSION

8787 Georgia Avenue
Silver Spring, Maryland 20910-3760
301-495-4500, www.mncppc.org

M E M O R A N D U M

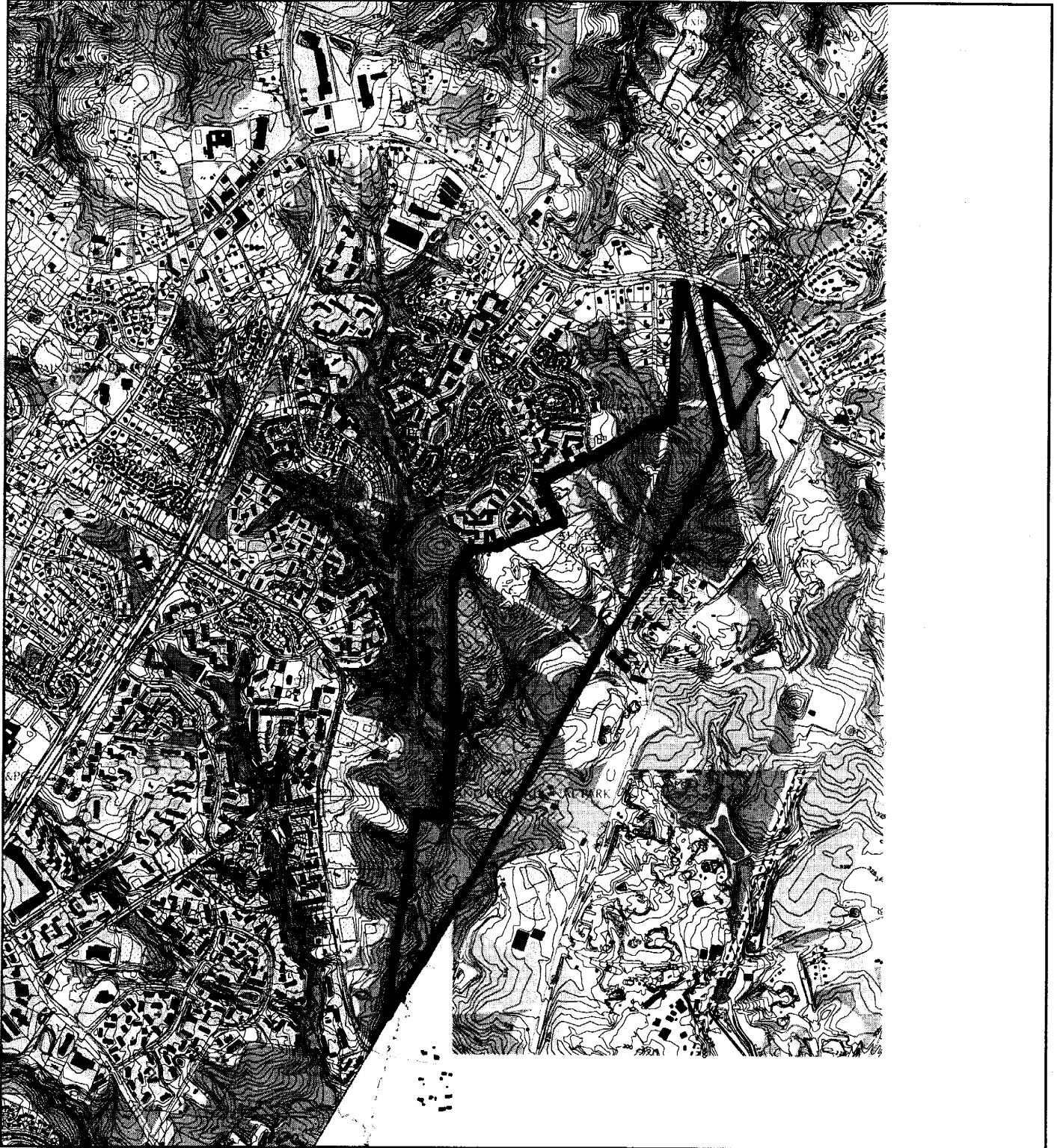
DATE: November 12, 2004
TO: Montgomery County Planning Board
FROM: Catherine Conlon
Development Review Division
(301) 495-4542
SUBJECT: Informational Maps for Subdivision Items on the
Planning Board's Agenda for November 18, 2004.

Attached are copies of plan drawings for item #05, #06, #05, #07, #08 and #13. These subdivision items are scheduled for Planning Board consideration on November 18, 2004. The items are further identified as follows:

- Agenda Item #05 - Preliminary Plan 1-99039E
Friendship Commons
- Agenda Item #06 - Preliminary Plan 1-00076E
The Independence of Privacy World
- Agenda Item #07 - Preliminary Plan 1-05015
Nottingham
- Agenda Item #08 - Preliminary Plan 1-04088
Boyds Highlands
- Agenda Item #13 - Preliminary Plan 1-05020
Fairland Golf Community

Attachment

FAIRLAND GOLF COMMUNITY (1-05020) (8-05006)



Map compiled on August 23, 2004 at 4:07 PM | Site located on base sheet no - 219NE05

NOTICE

The planimetric, property, and topographic information shown on this map is based on copyrighted Map Products from the Montgomery County Department of Park and Planning of the Maryland-National Capital Park and Planning Commission, and may not be copied or reproduced without written permission from M-NCPPC.

Property lines are compiled by adjusting the property lines to topography created from aerial photography and should not be interpreted as actual field surveys. Planimetric features were compiled from 1:14400 scale aerial photography using stereo photogrammetric methods.

This map is created from a variety of data sources, and may not reflect the most current conditions in any one location and may not be completely accurate or up to date. All map features are approximately within five feet of their true location. This map may not be the same as a map of the same area plotted at an earlier time as the data is continuously updated. Use of this map, other than for general planning purposes is not recommended. - Copyright 1998

Key Map



1 inch = 2000 feet
1 : 24000

FAIRLAND GOLF COMMUNITY (1-05020) (8-05006)



Map compiled on August 23, 2004 at 4:04 PM | Site located on base sheet no - 219NE05

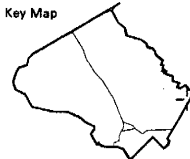
NOTICE

The planimetric, property, and topographic information shown on this map is based on copyrighted Map Products from the Montgomery County Department of Park and Planning of the Maryland - National Capital Park and Planning Commission, and may not be copied or reproduced without written permission from M-NCPPC.

Property lines are compiled by adjusting the property lines to topography created from aerial photography and should not be interpreted as actual field surveys. Planimetric features were compiled from 1:14400 scale aerial photography using stereo photogrammetric methods.

This map is created from a variety of data sources, and may not reflect the most current conditions in any one location and may not be completely accurate or up to date. All map features are approximately within five feet of their true location. This map may not be the same as a map of the same area plotted at an earlier time as the data is continuously updated. Use of this map, other than for general planning purposes is not recommended. - Copyright 1998

Key Map



N



Research & Technology Center



1 inch = 2000 feet
1 : 24000

DATE	1/1/00
BY	1/1/00
SCALE	1/1/00
PROJECT	1/1/00

MONTGOMERY COUNTY, MARYLAND

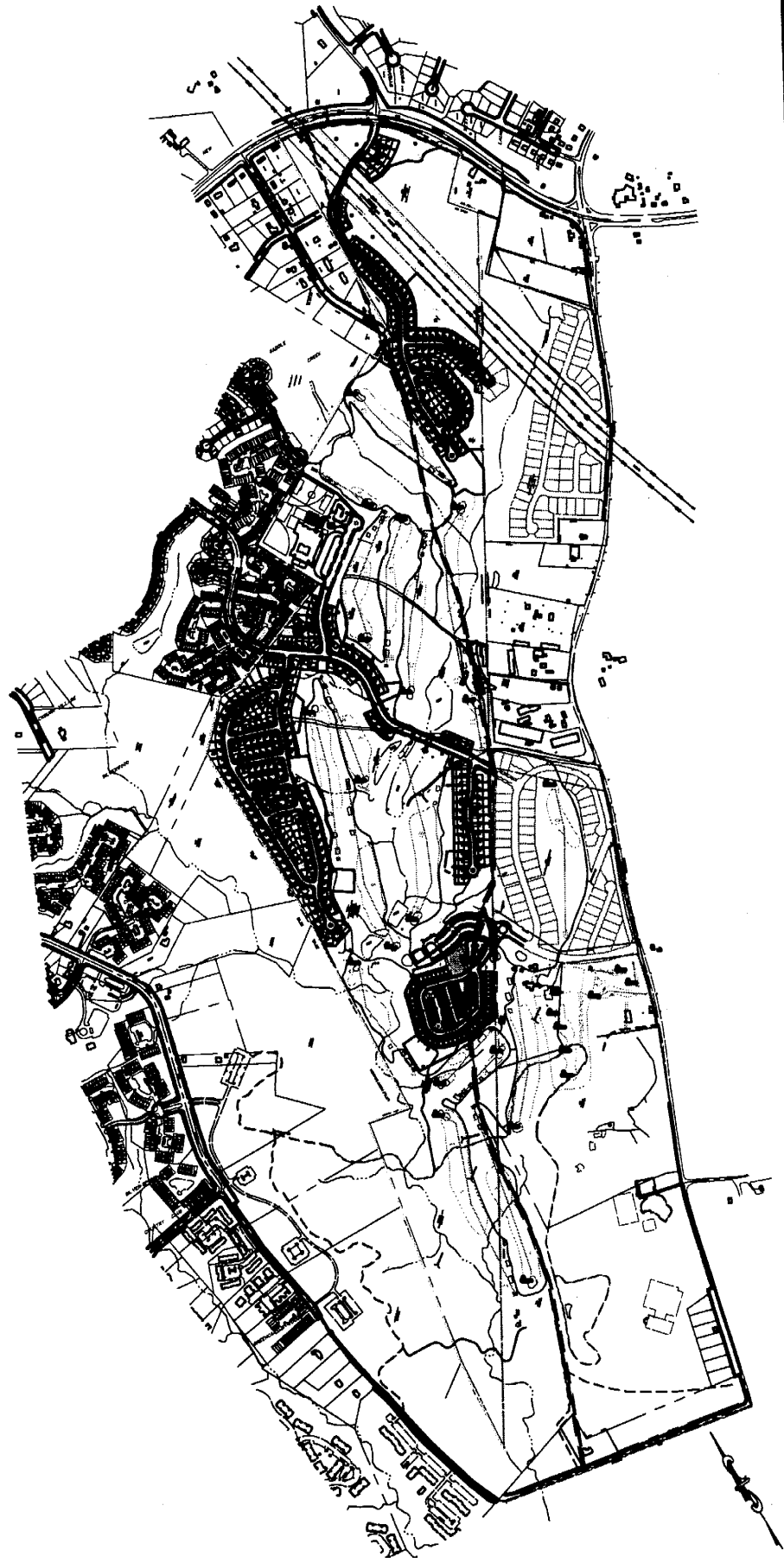


LOCAL JURISDICTION

Dewberry
 101 M&D BLDG. 100
 CHESTERFIELD RD. #100
 CHESTERFIELD, MD 21531-1000
 TEL: 410-326-7000
 FAX: 410-326-7001

FAIRLAND GOLF COMMUNITY

COMPOSITE PRELIMINARY PLAN



APPLICANTS:
 THE FAIRLAND INTERNATIONAL CAPITAL, P.A.
 101 M&D BLDG. 100
 CHESTERFIELD RD. #100
 CHESTERFIELD, MD 21531-1000
 TEL: 410-326-7000
 FAX: 410-326-7001

DESIGNER:
 DEWBERRY
 101 M&D BLDG. 100
 CHESTERFIELD RD. #100
 CHESTERFIELD, MD 21531-1000
 TEL: 410-326-7000
 FAX: 410-326-7001

CERTIFICATE OF REGISTERED SURVEYOR
 I HEREBY CERTIFY THAT THE BOUNDARY LINE DATA INDICATED
 HEREON IS TRUE AND CORRECT.
 DATE: 1/1/00
 REGISTERED SURVEYOR: [Signature]
 REGISTRATION NO. 10771

REVISIONS		
NO.	DESCRIPTION	DATE
1		