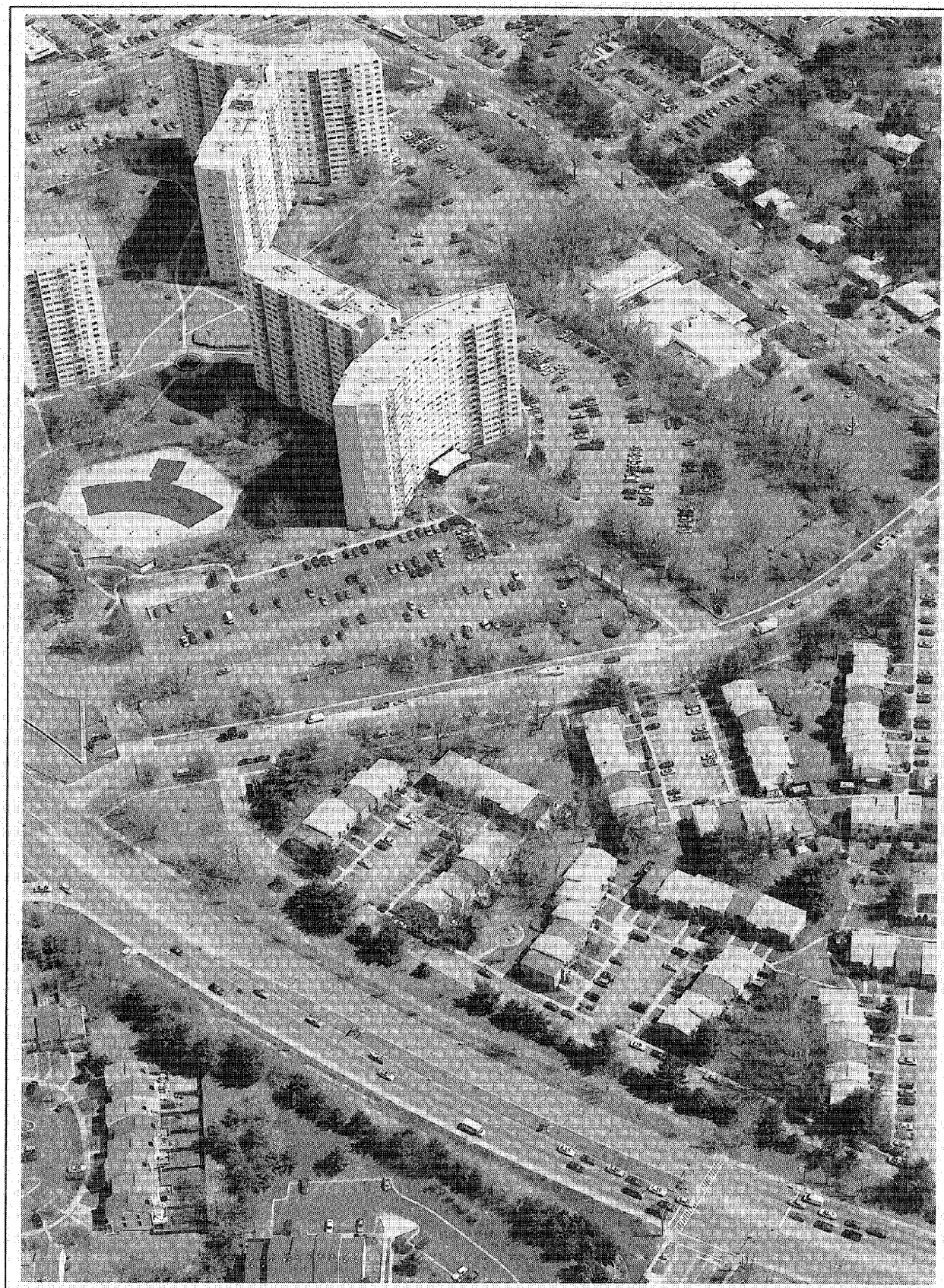


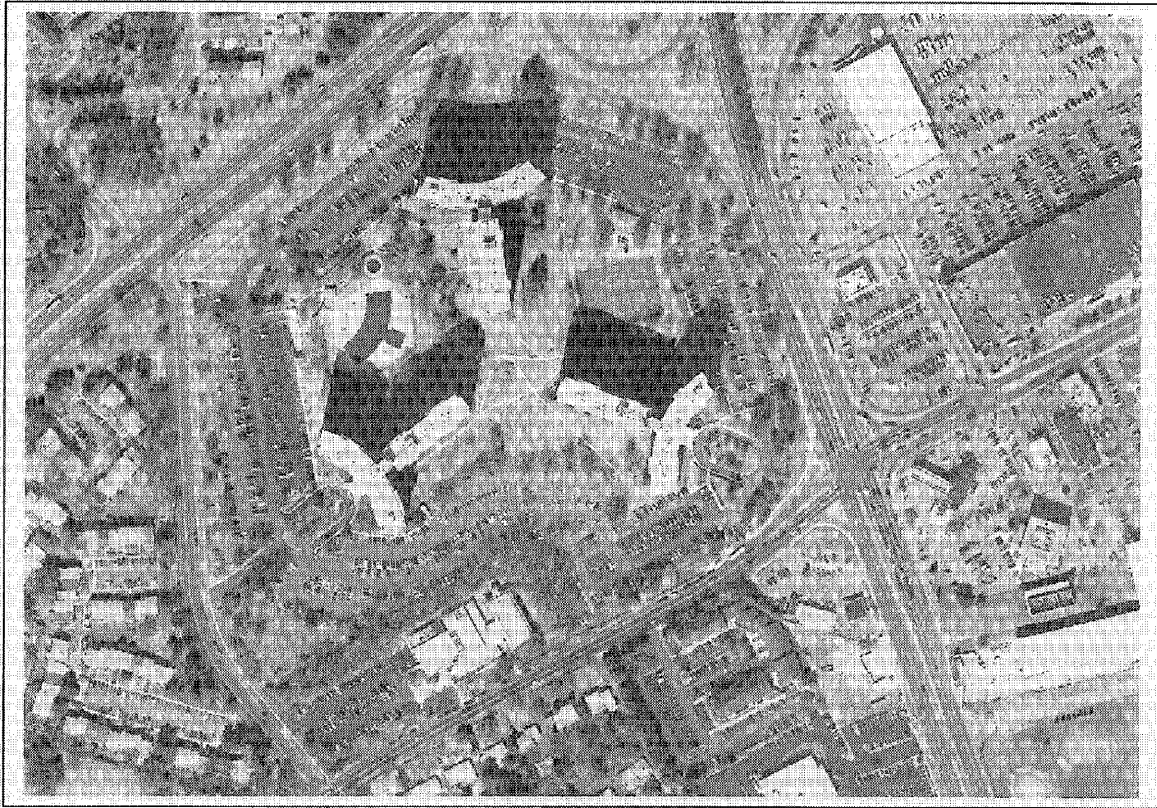
The White Oak Retail Center and The Enclave, as view obliquely from the south. The form and massing of the towers are unmistakable icons of 1960's planning and design.



Aerial oblique photograph of The Enclave from the southwest, showing Columbia Pike (at bottom) the existing swimming pool facility (at left). The small pool house will be replaced with the proposed Community Center. Oak Leaf Drive is seen bisecting the picture; note the existing street trees along the west side of the Drive; a new pedestrian path was recently constructed along eastern side of Columbia Pike, near the townhomes; the path connects to The Enclave site frontage on Oak Leaf Drive.

PROJECT DESCRIPTION: Site Description

The three high-rise towers that comprise the Enclave Development essentially claim this suburban “block,” almost in entirety. The single housing parcel reaches to the block perimeter, except for the rectangular southwest corner that contains the ShaareTefila Congregation Synagogue. The 19-story structures sit equidistant from each other, in tripod-style arrangement, balanced upon the central plinth that rises from the surrounding streets by as much as 14 feet. The towers forcefully dominate the surrounding environment, built and un-built, residential and commercial, recreational and industrial, for miles around.



Circumscribing the property is a “necklace” of interconnected surface parking lots which, paradoxically, create an undesirable expanse of paving, while concealing additional underground parking that would otherwise occupy even more of the site’s green area and open space.

The figure ground (at left) clarifies the space of the central void, articulated by the converging “points” of the building footprints. Recreation facilities, including the arc-shaped pool and the tennis courts, are placed axially between the building wings. The complex site and building design conforms to abstract, purist geometry that relates minimally to its surrounding context of land use street patterns, solar orientation or building type and scale.

