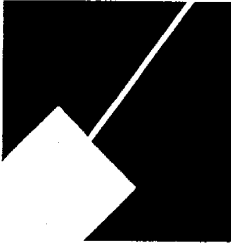


Item #7

M-NCPPC



**MONTGOMERY COUNTY DEPARTMENT OF PARK AND PLANNING**

THE MARYLAND-NATIONAL CAPITAL  
PARK AND PLANNING COMMISSION

8787 Georgia Avenue  
Silver Spring, Maryland 20910-3760  
301-495-4500, [www.mncppc.org](http://www.mncppc.org)

M E M O R A N D U M

**DATE:** December 10, 2004  
**TO:** Montgomery County Planning Board  
**FROM:** Catherine Conlon  
Development Review Division  
(301) 495-4542  
**SUBJECT:** Informational Maps for Subdivision Items on the  
Planning Board's Agenda for December 16, 2004.

-----

Attached are copies of plan drawings for item #03, #06 and #07. These subdivision items are scheduled for Planning Board consideration on December 16, 2004. The items are further identified as follows:

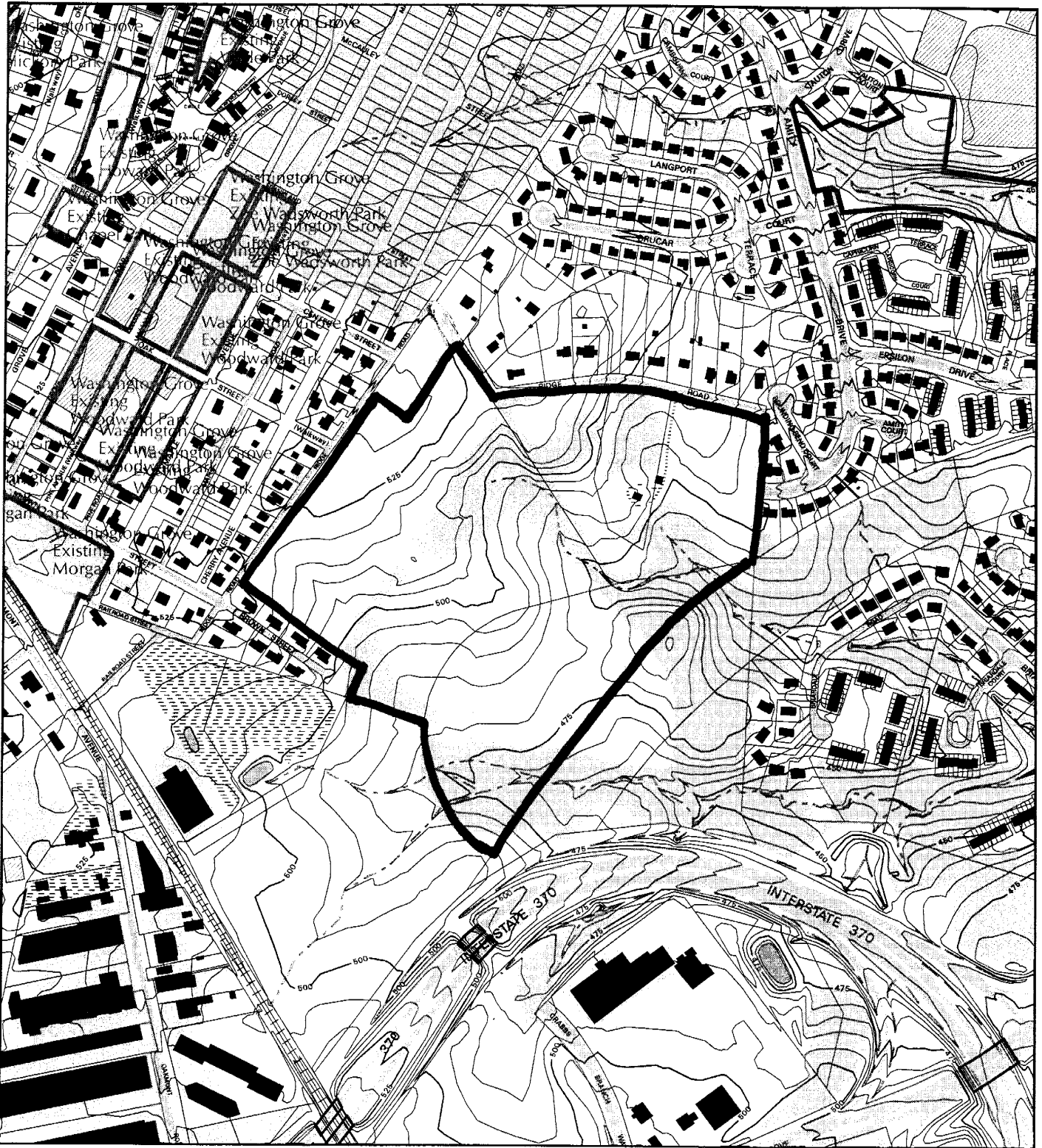
Agenda Item #03 - Preliminary Plan 1-03089  
Glen Mill Knolls

Agenda Item #06 - Preliminary Plan 1-04105  
Roberts Landing

Agenda Item #07 - Preliminary Plan 1-02022  
Casey Property at Mill Creek

Attachment

# CASEY PROPERTY @ MILL CREEK (1-02022)



Map compiled on December 10, 2004 at 12:21 PM | Site located on base sheet no. 223NW08

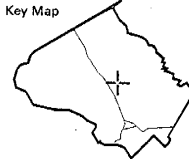
## NOTICE

The planimetric, property, and topographic information shown on this map is based on copyrighted Map Products from the Montgomery County Department of Park and Planning of the Maryland - National Capital Park and Planning Commission, and may not be copied or reproduced without written permission from M-NCPPC.

Property lines are compiled by adjusting the property lines to topography created from aerial photography and should not be interpreted as actual field surveys. Planimetric features were compiled from 1:14400 scale aerial photography using stereo photogrammetric methods.

This map is created from a variety of data sources, and may not reflect the most current conditions in any one location and may not be completely accurate or up to date. All map features are approximately within five feet of their true location. This map may not be the same as a map of the same area plotted at an earlier time as the data is continuously updated. Use of this map, other than for general planning purposes is not recommended. - Copyright 1998

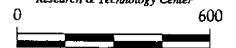
Key Map



N



Research & Technology Center

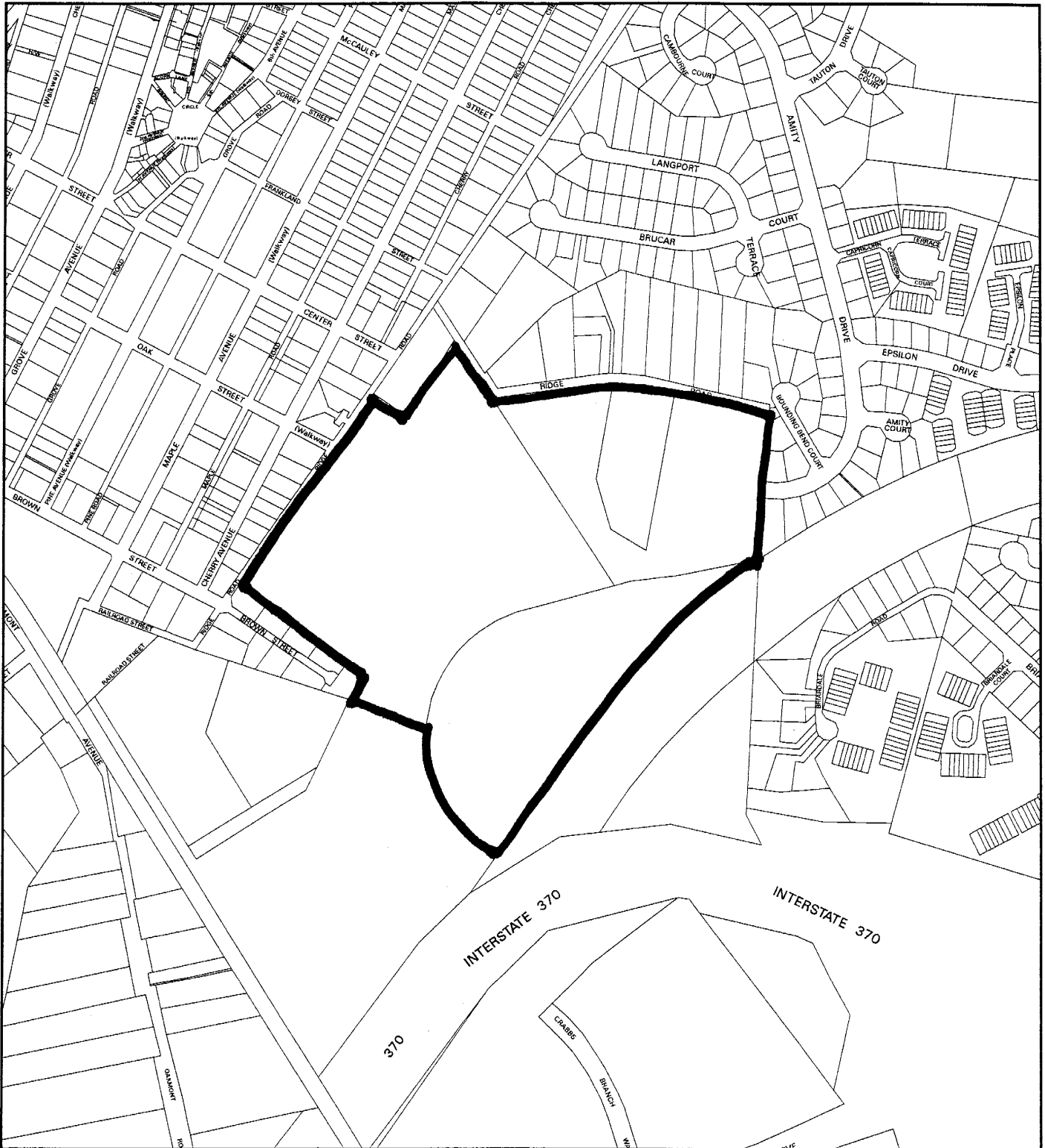


1 inch = 600 feet  
1 : 7200

**MONTGOMERY COUNTY DEPARTMENT OF PARK AND PLANNING**  
THE MARYLAND-NATIONAL CAPITAL PARK AND PLANNING COMMISSION

8787 Georgia Avenue - Silver Spring, Maryland 20910-3760

# CASEY PROPERTY @ MILL CREEK (1-02022)



Map compiled on December 10, 2004 at 12:18 PM | Site located on base sheet no - 223NW08

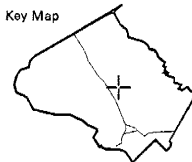
## NOTICE

The planimetric, property, and topographic information shown on this map is based on copyrighted Map Products from the Montgomery County Department of Park and Planning of the Maryland -National Capital Park and Planning Commission, and may not be copied or reproduced without written permission from M-NCPPC.

Property lines are compiled by adjusting the property lines to topography created from aerial photography and should not be interpreted as actual field surveys. Planimetric features were compiled from 1:14400 scale aerial photography using stereo photogrammetric methods.

This map is created from a variety of data sources, and may not reflect the most current conditions in any one location and may not be completely accurate or up to date. All map features are approximately within five feet of their true location. This map may not be the same as a map of the same area plotted at an earlier time as the data is continuously updated. Use of this map, other than for general planning purposes is not recommended. - Copyright 1998

Key Map



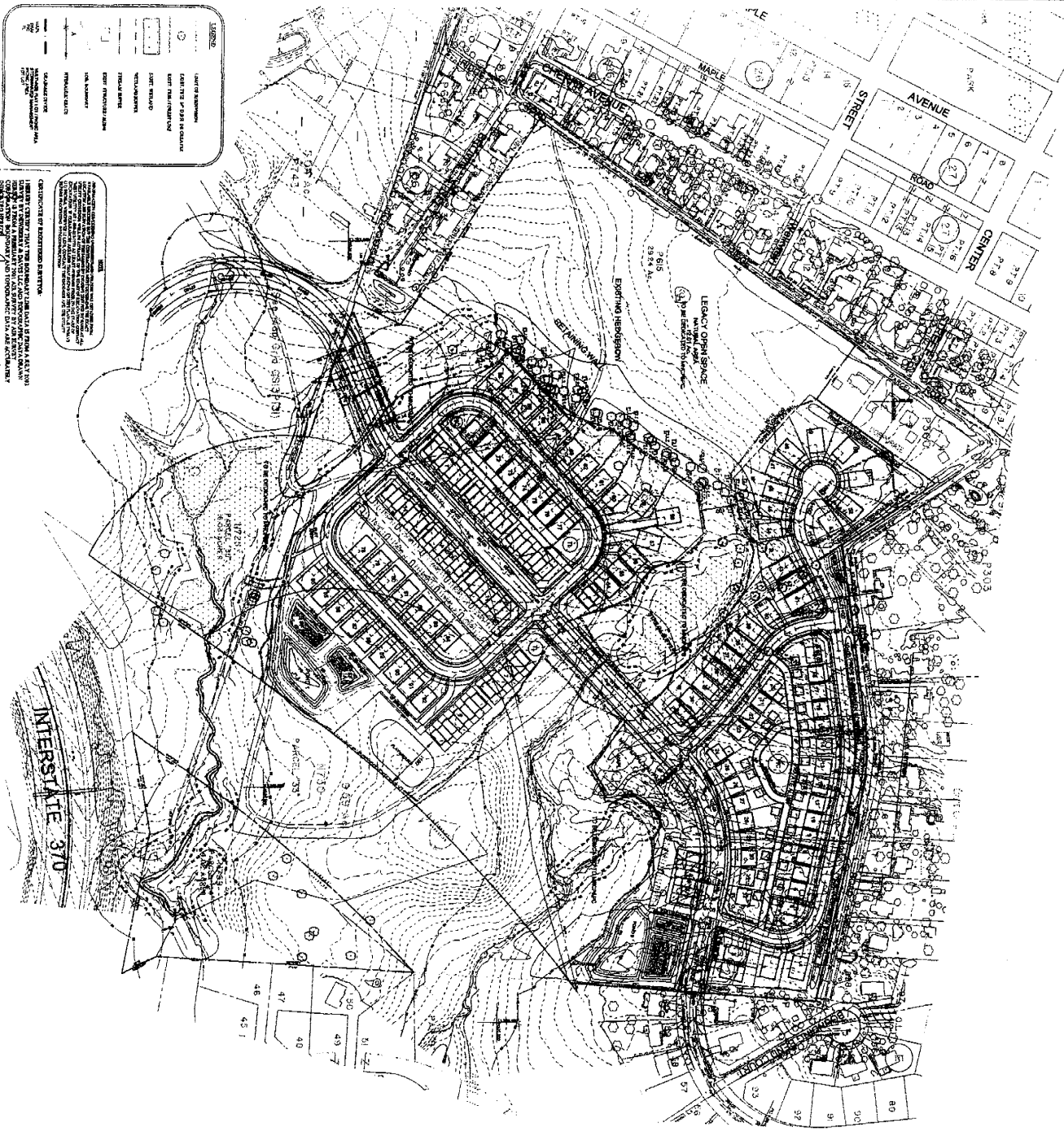
N



Research & Technology Center



1 inch = 600 feet  
1 : 7200



**LEGEND**

—	EXISTING LOT LINES
- - -	EXISTING LOT LINES (AS SHOWN ON RECORD PLANS)
—	EXISTING DRIVEWAYS
- - -	EXISTING DRIVEWAYS (AS SHOWN ON RECORD PLANS)
—	EXISTING DRIVEWAYS (AS SHOWN ON RECORD PLANS)
- - -	EXISTING DRIVEWAYS (AS SHOWN ON RECORD PLANS)
—	EXISTING DRIVEWAYS (AS SHOWN ON RECORD PLANS)
- - -	EXISTING DRIVEWAYS (AS SHOWN ON RECORD PLANS)
—	EXISTING DRIVEWAYS (AS SHOWN ON RECORD PLANS)
- - -	EXISTING DRIVEWAYS (AS SHOWN ON RECORD PLANS)
—	EXISTING DRIVEWAYS (AS SHOWN ON RECORD PLANS)
- - -	EXISTING DRIVEWAYS (AS SHOWN ON RECORD PLANS)

THE ENGINEER HAS CONDUCTED A VISUAL INSPECTION OF THE PROPERTY AND HAS FOUND THAT THE PROPERTY IS SUITABLE FOR THE PROPOSED DEVELOPMENT. THE ENGINEER HAS CONDUCTED A VISUAL INSPECTION OF THE PROPERTY AND HAS FOUND THAT THE PROPERTY IS SUITABLE FOR THE PROPOSED DEVELOPMENT. THE ENGINEER HAS CONDUCTED A VISUAL INSPECTION OF THE PROPERTY AND HAS FOUND THAT THE PROPERTY IS SUITABLE FOR THE PROPOSED DEVELOPMENT.

*Casey*  
1/18/14

NO.	DATE	REVISIONS
1	02/07/14	PRELIMINARY
2	02/10/14	REVISED
3	02/17/14	REVISED
4	02/24/14	REVISED
5	03/03/14	REVISED
6	03/10/14	REVISED
7	03/17/14	REVISED
8	03/24/14	REVISED
9	03/31/14	REVISED
10	04/07/14	REVISED
11	04/14/14	REVISED
12	04/21/14	REVISED
13	04/28/14	REVISED
14	05/05/14	REVISED
15	05/12/14	REVISED
16	05/19/14	REVISED
17	05/26/14	REVISED
18	06/02/14	REVISED
19	06/09/14	REVISED
20	06/16/14	REVISED
21	06/23/14	REVISED
22	06/30/14	REVISED
23	07/07/14	REVISED
24	07/14/14	REVISED
25	07/21/14	REVISED
26	07/28/14	REVISED
27	08/04/14	REVISED
28	08/11/14	REVISED
29	08/18/14	REVISED
30	08/25/14	REVISED
31	09/01/14	REVISED
32	09/08/14	REVISED
33	09/15/14	REVISED
34	09/22/14	REVISED
35	09/29/14	REVISED
36	10/06/14	REVISED
37	10/13/14	REVISED
38	10/20/14	REVISED
39	10/27/14	REVISED
40	11/03/14	REVISED
41	11/10/14	REVISED
42	11/17/14	REVISED
43	11/24/14	REVISED
44	12/01/14	REVISED
45	12/08/14	REVISED
46	12/15/14	REVISED
47	12/22/14	REVISED
48	12/29/14	REVISED
49	01/05/15	REVISED
50	01/12/15	REVISED
51	01/19/15	REVISED
52	01/26/15	REVISED
53	02/02/15	REVISED
54	02/09/15	REVISED
55	02/16/15	REVISED
56	02/23/15	REVISED
57	03/02/15	REVISED
58	03/09/15	REVISED
59	03/16/15	REVISED
60	03/23/15	REVISED
61	03/30/15	REVISED
62	04/06/15	REVISED
63	04/13/15	REVISED
64	04/20/15	REVISED
65	04/27/15	REVISED
66	05/04/15	REVISED
67	05/11/15	REVISED
68	05/18/15	REVISED
69	05/25/15	REVISED
70	06/01/15	REVISED
71	06/08/15	REVISED
72	06/15/15	REVISED
73	06/22/15	REVISED
74	06/29/15	REVISED
75	07/06/15	REVISED
76	07/13/15	REVISED
77	07/20/15	REVISED
78	07/27/15	REVISED
79	08/03/15	REVISED
80	08/10/15	REVISED
81	08/17/15	REVISED
82	08/24/15	REVISED
83	08/31/15	REVISED
84	09/07/15	REVISED
85	09/14/15	REVISED
86	09/21/15	REVISED
87	09/28/15	REVISED
88	10/05/15	REVISED
89	10/12/15	REVISED
90	10/19/15	REVISED
91	10/26/15	REVISED
92	11/02/15	REVISED
93	11/09/15	REVISED
94	11/16/15	REVISED
95	11/23/15	REVISED
96	11/30/15	REVISED
97	12/07/15	REVISED
98	12/14/15	REVISED
99	12/21/15	REVISED
100	12/28/15	REVISED



**OWNER'S DEVELOPER**

**CASEY PROPERTY @ MILL CREEK**

OWNERS DEVELOPER  
COURTESY DEVELOPMENT COMPANY  
IN ASSOCIATION WITH  
MONTGOMERY COUNTY, MARYLAND  
MONTGOMERY COUNTY, MARYLAND  
PLANNING AND ZONING DEPARTMENT  
201 PARRY PARKWAY, SUITE 1  
GAITHERSBURG, MD 20877-2169  
(301) 948-8500 Fax: (301) 258-7607

**DESIGNER'S DEVELOPER**

**CASEY PROPERTY @ MILL CREEK**

DESIGNER'S DEVELOPER  
COURTESY DEVELOPMENT COMPANY  
IN ASSOCIATION WITH  
MONTGOMERY COUNTY, MARYLAND  
MONTGOMERY COUNTY, MARYLAND  
PLANNING AND ZONING DEPARTMENT  
201 PARRY PARKWAY, SUITE 1  
GAITHERSBURG, MD 20877-2169  
(301) 948-8500 Fax: (301) 258-7607

**DESIGNER'S DEVELOPER**

**CASEY PROPERTY @ MILL CREEK**

DESIGNER'S DEVELOPER  
COURTESY DEVELOPMENT COMPANY  
IN ASSOCIATION WITH  
MONTGOMERY COUNTY, MARYLAND  
MONTGOMERY COUNTY, MARYLAND  
PLANNING AND ZONING DEPARTMENT  
201 PARRY PARKWAY, SUITE 1  
GAITHERSBURG, MD 20877-2169  
(301) 948-8500 Fax: (301) 258-7607

PRELIMINARY SUBDIVISION PLAN 1-02022  
**CASEY PROPERTY @ MILL CREEK**  
 9TH ELECTION DISTRICT  
 MONTGOMERY COUNTY, MARYLAND

**OWNERS DEVELOPER**  
 COURTESY DEVELOPMENT COMPANY  
 IN ASSOCIATION WITH  
 MONTGOMERY COUNTY, MARYLAND  
 MONTGOMERY COUNTY, MARYLAND  
 PLANNING AND ZONING DEPARTMENT  
 201 PARRY PARKWAY, SUITE 1  
 GAITHERSBURG, MD 20877-2169  
 (301) 948-8500 Fax: (301) 258-7607

**DESIGNER'S DEVELOPER**  
 COURTESY DEVELOPMENT COMPANY  
 IN ASSOCIATION WITH  
 MONTGOMERY COUNTY, MARYLAND  
 MONTGOMERY COUNTY, MARYLAND  
 PLANNING AND ZONING DEPARTMENT  
 201 PARRY PARKWAY, SUITE 1  
 GAITHERSBURG, MD 20877-2169  
 (301) 948-8500 Fax: (301) 258-7607

**DESIGNER'S DEVELOPER**  
 COURTESY DEVELOPMENT COMPANY  
 IN ASSOCIATION WITH  
 MONTGOMERY COUNTY, MARYLAND  
 MONTGOMERY COUNTY, MARYLAND  
 PLANNING AND ZONING DEPARTMENT  
 201 PARRY PARKWAY, SUITE 1  
 GAITHERSBURG, MD 20877-2169  
 (301) 948-8500 Fax: (301) 258-7607

**Dewberry**  
 Dewberry & Davis LLC  
 201 PARRY PARKWAY, SUITE 1  
 GAITHERSBURG, MD 20877-2169  
 (301) 948-8500 Fax: (301) 258-7607

**Engineers**  
**Planners**  
**Surveyors**  
**Landscape Architects**

www.dewberry.com