

Item # 10

M-NCPPC



MONTGOMERY COUNTY DEPARTMENT OF PARK AND PLANNING

THE MARYLAND-NATIONAL CAPITAL
PARK AND PLANNING COMMISSION

8787 Georgia Avenue
Silver Spring, Maryland 20910-3760
301-495-4500, www.mncppc.org

M E M O R A N D U M

DATE: December 17, 2004
TO: Montgomery County Planning Board
FROM: Catherine Conlon
Development Review Division
(301) 495-4542
SUBJECT: Informational Maps for Subdivision Items on the
Planning Board's Agenda for December 16, 2004.

Attached are copies of plan drawings for item #04, #06, #08, #10, #11, #12, and #13. These subdivision items are scheduled for Planning Board consideration on December 16, 2004. The items are further identified as follows:

Agenda Item #04 - Preliminary Plan 1-01030A
Clarksburg Village

Agenda Item #06 - Preliminary Plan 1-02022
Casey Property at Mill Creek

Agenda Item #08 - Preliminary Plan 1-90017E
Kingsview Village

Agenda Item #10 - Preliminary Plan 1-05035
Chevy Chase Section 8

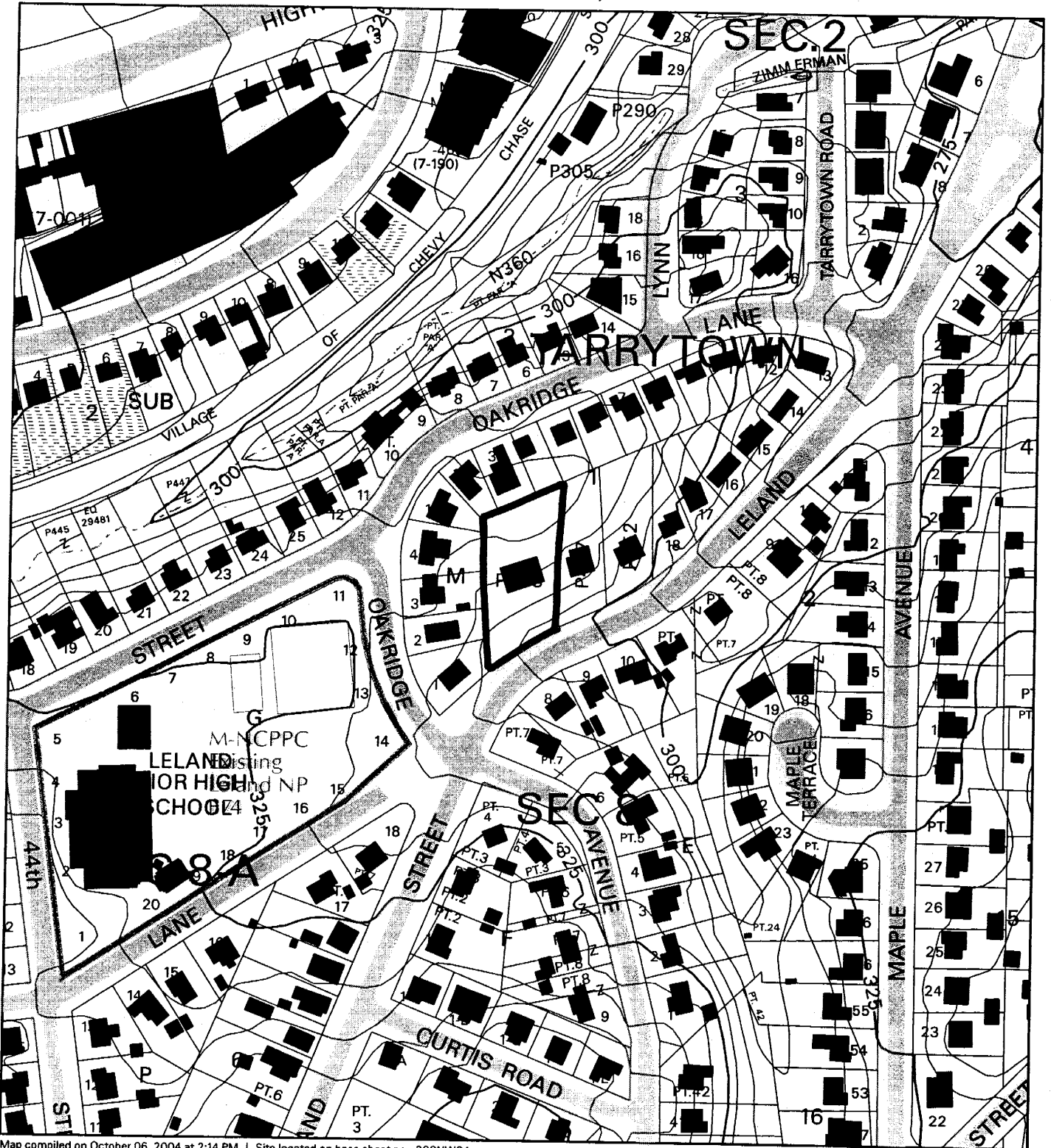
Agenda Item #11 - Preliminary Plan 1-04093
Seitz Property

Agenda Item #12 - Preliminary Plan 1-04103
Travilah Quarry

Agenda Item #13 - Preliminary Plan 1-04056
Atwood Road Property

Attachment

CHEVY CHASE, SECTION 8 (1-05035)



Map compiled on October 06, 2004 at 2:14 PM | Site located on base sheet no - 209NW04

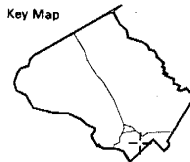
NOTICE

The planimetric, property, and topographic information shown on this map is based on copyrighted Map Products from the Montgomery County Department of Park and Planning of the Maryland - National Capital Park and Planning Commission, and may not be copied or reproduced without written permission from M-NCPPC.

Property lines are compiled by adjusting the property lines to topography created from aerial photography and should not be interpreted as actual field surveys. Planimetric features were compiled from 1:14400 scale aerial photography using stereo photogrammetric methods.

This map is created from a variety of data sources, and may not reflect the most current conditions in any one location and may not be completely accurate or up to date. All map features are approximately within five feet of their true location. This map may not be the same as a map of the same area plotted at an earlier time as the data is continuously updated. Use of this map, other than for general planning purposes is not recommended. - Copyright 1998

Key Map



Research & Technology Center



1 inch = 200 feet
1 : 2400

