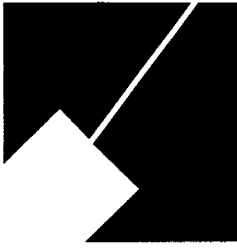


Item # 6

M-NCPPC



MONTGOMERY COUNTY DEPARTMENT OF PARK AND PLANNING

THE MARYLAND-NATIONAL CAPITAL  
PARK AND PLANNING COMMISSION

8787 Georgia Avenue  
Silver Spring, Maryland 20910-3760  
301-495-4500, www.mncppc.org

M E M O R A N D U M

DATE: January 3, 2005  
TO: Montgomery County Planning Board  
FROM: Catherine Conlon  
Development Review Division  
(301) 495-4542  
SUBJECT: Informational Maps for Subdivision Items on the  
Planning Board's Agenda for January 06, 2005.

-----  
Attached are copies of plan drawings for item #04, #05, #06,  
#07, #08, and #09. These subdivision items are scheduled for  
Planning Board consideration on January 06, 2005. The items are  
further identified as follows:

Agenda Item #04 - Preliminary Plan 1-01067E  
East Hampshire Center Extension

Agenda Item #05 - Preliminary Plan 1-05042  
Concord

Agenda Item #06 - Minor Subdivision Plat 2-02138  
Stoney Creek Estates Minor Subdivision

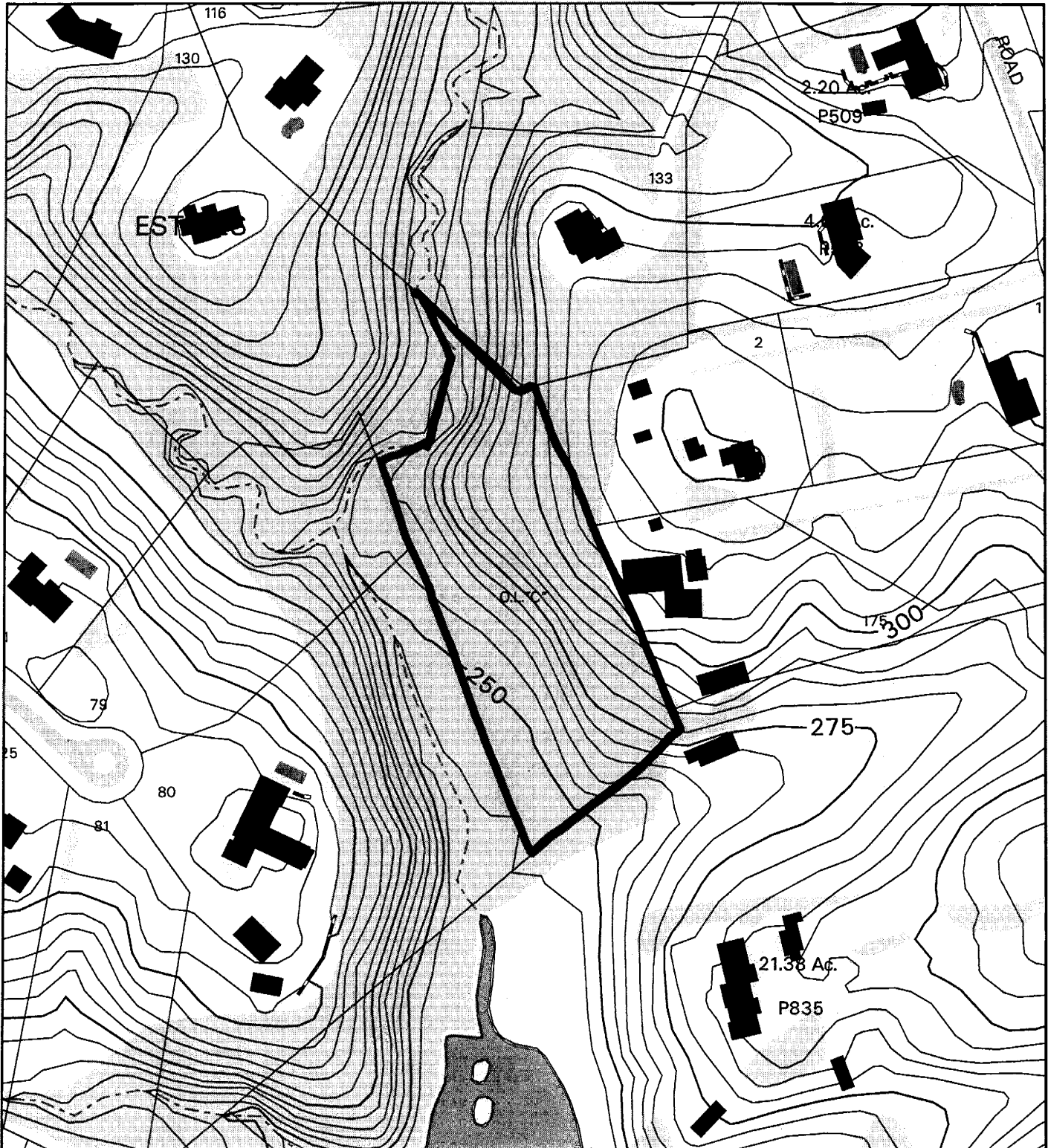
Agenda Item #07 - Preliminary Plan 1-05043  
Damascus Hill

Agenda Item #08 - Preliminary Plan 1-05008  
Ashton-Carvounis Property

Agenda Item #09 - Preliminary Plan 1-05002  
Verbits Acres

Attachment

# STONEY CREEK ESTATES MINOR SUB. (2-02138)



Map compiled on January 03, 2005 at 12:56 PM | Site located on base sheet no - 216NW13

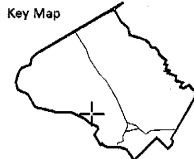
## NOTICE

The planimetric, property, and topographic information shown on this map is based on copyrighted Map Products from the Montgomery County Department of Park and Planning of the Maryland-National Capital Park and Planning Commission, and may not be copied or reproduced without written permission from M-NCPPC.

Property lines are compiled by adjusting the property lines to topography created from aerial photography and should not be interpreted as actual field surveys. Planimetric features were compiled from 1:14400 scale aerial photography using stereo photogrammetric methods.

This map is created from a variety of data sources, and may not reflect the most current conditions in any one location and may not be completely accurate or up to date. All map features are approximately within five feet of their true location. This map may not be the same as a map of the same area plotted at an earlier time as the data is continuously updated. Use of this map, other than for general planning purposes is not recommended. - Copyright 1998

Key Map

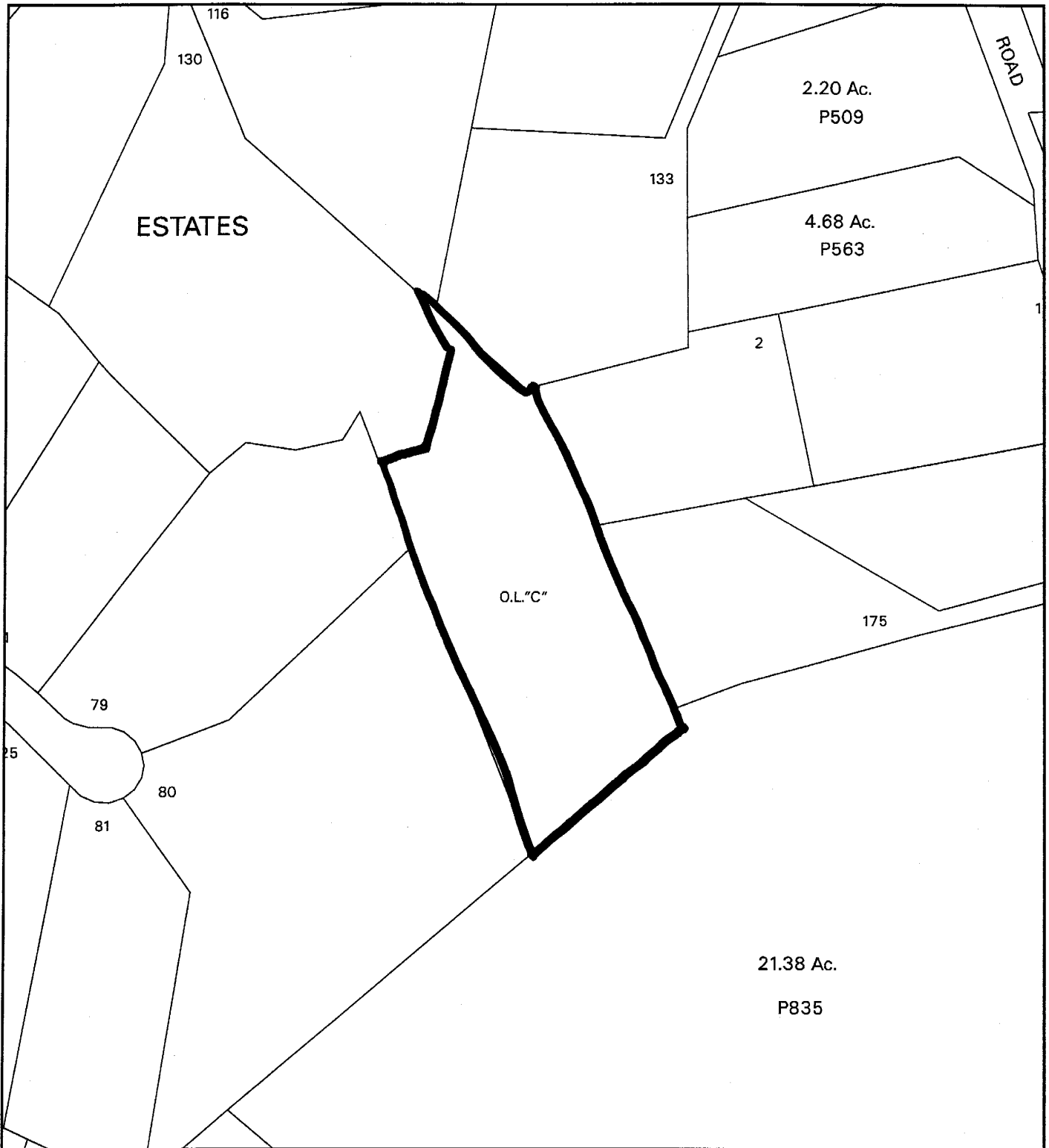


Research & Technology Center



1 inch = 200 feet  
1 : 2400

# STONEY CREEK ESTATES MINOR SUB. (2-02138)



Map compiled on January 03, 2005 at 12:55 PM | Site located on base sheet no - 216NW13

## NOTICE

The planimetric, property, and topographic information shown on this map is based on copyrighted Map Products from the Montgomery County Department of Park and Planning of the Maryland-National Capital Park and Planning Commission, and may not be copied or reproduced without written permission from M-NCPPC.

Property lines are compiled by adjusting the property lines to topography created from aerial photography and should not be interpreted as actual field surveys. Planimetric features were compiled from 1:14400 scale aerial photography using stereo photogrammetric methods.

This map is created from a variety of data sources, and may not reflect the most current conditions in any one location and may not be completely accurate or up to date. All map features are approximately within five feet of their true location. This map may not be the same as a map of the same area plotted at an earlier time as the data is continuously updated. Use of this map, other than for general planning purposes is not recommended. - Copyright 1998



Research & Technology Center



1 inch = 200 feet  
1 : 2400

