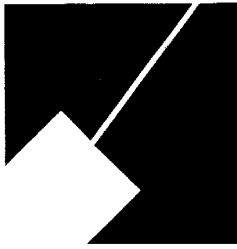


Item # 4

M-NCPPC



MONTGOMERY COUNTY DEPARTMENT OF PARK AND PLANNING

THE MARYLAND-NATIONAL CAPITAL
PARK AND PLANNING COMMISSION

8787 Georgia Avenue
Silver Spring, Maryland 20910-3760
301-495-4500, www.mncppc.org

M E M O R A N D U M

DATE: January 3, 2005
TO: Montgomery County Planning Board
FROM: Catherine Conlon
Development Review Division
(301) 495-4542
SUBJECT: Informational Maps for Subdivision Items on the
Planning Board's Agenda for January 06, 2005.

Attached are copies of plan drawings for item #04, #05, #06,
#07, #08, and #09. These subdivision items are scheduled for
Planning Board consideration on January 06, 2005. The items are
further identified as follows:

- Agenda Item #04 - Preliminary Plan 1-01067E
East Hampshire Center Extension
- Agenda Item #05 - Preliminary Plan 1-05042
Concord
- Agenda Item #06 - Minor Subdivision Plat 2-02138
Stoney Creek Estates Minor Subdivision
- Agenda Item #07 - Preliminary Plan 1-05043
Damascus Hill
- Agenda Item #08 - Preliminary Plan 1-05008
Ashton-Carvounis Property
- Agenda Item #09 - Preliminary Plan 1-05002
Verbits Acres

Attachment

VERBITS ACRES (1-05002)



Map compiled on July 19, 2004 at 10:01 AM | Site located on base sheet no - 219NE04

NOTICE

The planimetric, property, and topographic information shown on this map is based on copyrighted Map Products from the Montgomery County Department of Park and Planning of the Maryland-National Capital Park and Planning Commission, and may not be copied or reproduced without written permission from M-NCPPC.

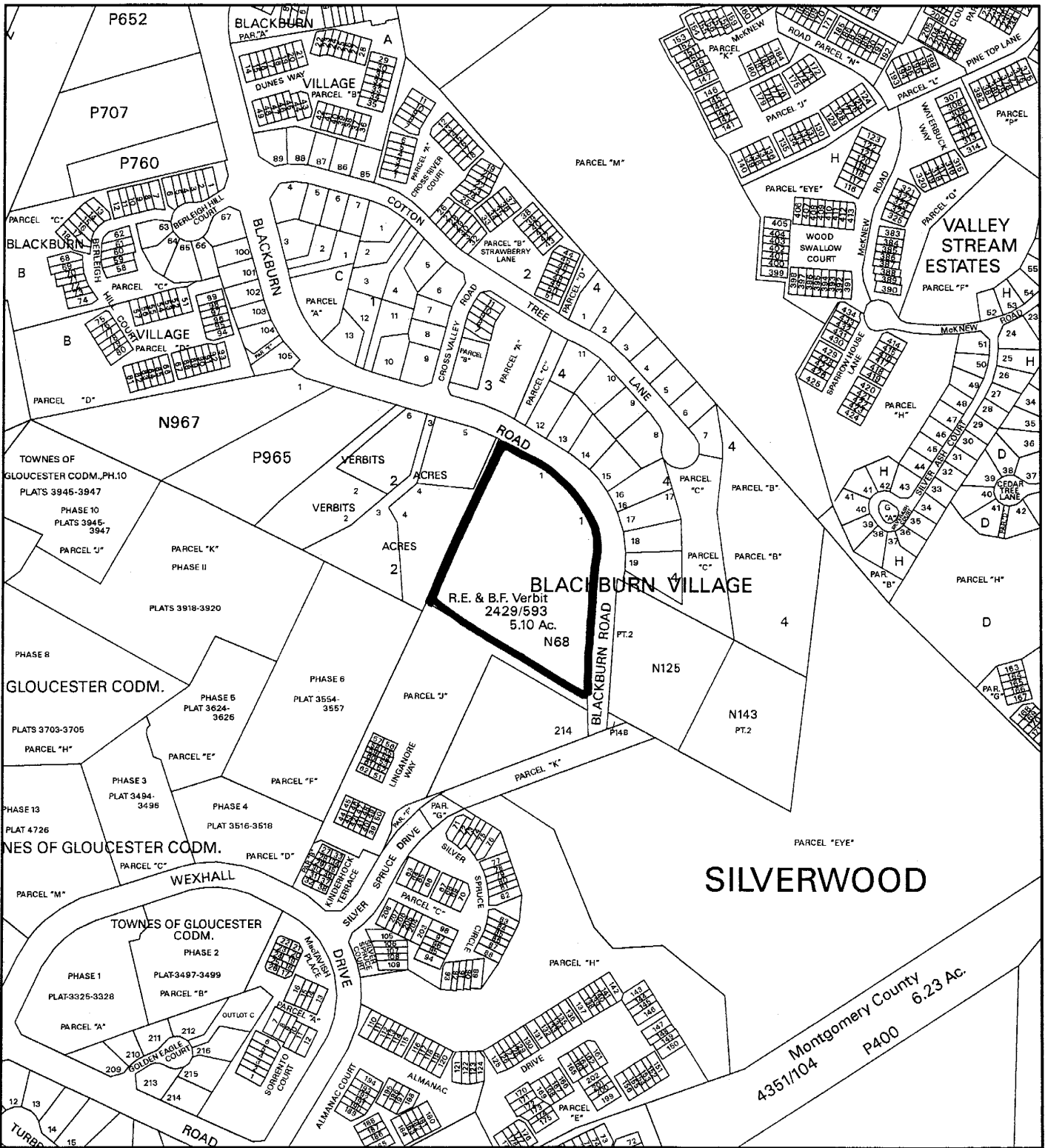
Property lines are compiled by adjusting the property lines to topography created from aerial photography and should not be interpreted as actual field surveys. Planimetric features were compiled from 1:144,000 scale aerial photography using stereo photogrammetric methods.

This map is created from a variety of data sources, and may not reflect the most current conditions in any one location and may not be completely accurate or up to date. All map features are approximately within five feet of their true location. This map may not be the same as a map of the same area plotted at an earlier time as the data is continuously updated. Use of this map, other than for general planning purposes is not recommended. - Copyright 1998

Key Map



VERBITS ACRES (1-05002)



Map compiled on January 03, 2005 at 9:54 AM | Site located on base sheet no - 219NE04

NOTICE

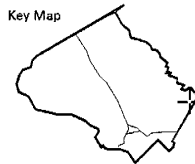
The planimetric, property, and topographic information shown on this map is based on copyrighted Map Products from the Montgomery County Department of Park and Planning of the Maryland - National Capital Park and Planning Commission, and may not be copied or reproduced without written permission from M-NCPPC.

Property lines are compiled by adjusting the property lines to topography created from aerial photography and should not be interpreted as actual field surveys. Planimetric features were compiled from 1:14400 scale aerial photography using stereo photogrammetric methods.

This map is created from a variety of data sources, and may not reflect the most current conditions in any one location and may not be completely accurate or up to date. All map features are approximately within five feet of their true location. This map may not be the same as a map of the same area plotted at an earlier time as the data is continuously updated. Use of this map, other than for general planning purposes is not recommended. - Copyright 1998

MONTGOMERY COUNTY DEPARTMENT OF PARK AND PLANNING
 THE MARYLAND-NATIONAL CAPITAL PARK AND PLANNING COMMISSION
 8787 Georgia Avenue - Silver Spring, Maryland 20910-3760

Key Map



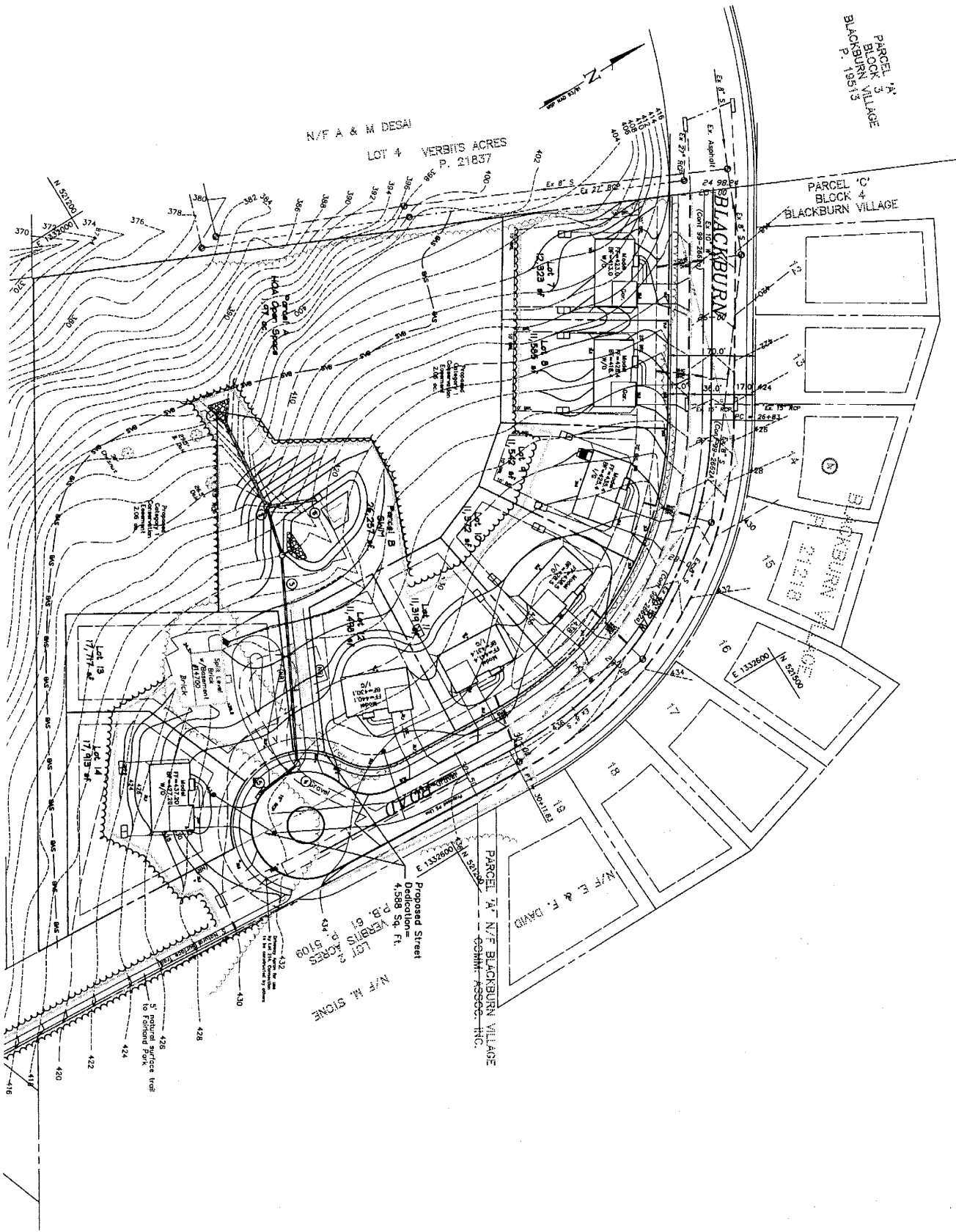
N



Research & Technology Center



1 inch = 400 feet
 1 : 4800



N/F A & M DESAI
 LOT 4 VERBIS ACRES
 P. 21837

PARCEL 'A'
 BLOCK 4
 BLACKBURN VILLAGE
 P. 19513

PARCEL 'C'
 BLOCK 4
 BLACKBURN VILLAGE

BLACKBURN

BLACKBURN VILLAGE
 P. 21219

PARCEL 'D' N/F BLACKBURN VILLAGE
 GCHM ASSOC. INC.

Proposed Street
 Dedication =
 4,588 Sq. Ft.
 P. 8, 61
 VERBIS ACRES
 P. 5109

N/F M. STONE

N/F E & F. DAVID

Lot 13
 17,777 sq. ft.

Lot 14
 17,913 sq. ft.

Lot 15
 11,515 sq. ft.

Lot 16
 13,376 sq. ft.

2' Pedestal Surface from
 0' Existing Terrain

1:2

1:2

1:2

1:2

1:2

1:2

1:2

1:2

1:2

1:2

1:2

1:2

1:2

1:2

1:2

1:2

1:2

1:2

1:2

1:2

1:2

1:2

1:2

1:2

1:2

1:2

1:2

1:2

1:2

1:2

1:2

1:2

1:2

1:2

1:2

1:2

1:2

1:2

1:2

1:2

1:2

1:2

1:2

1:2

1:2

1:2

1:2

1:2

1:2

1:2

1:2

1:2

1:2

1:2

1:2

1:2

1:2

1:2

1:2

1:2

1:2

1:2

1:2

1:2

1:2

1:2

1:2

1:2

1:2

1:2

1:2

1:2

1:2

1:2

1:2