

February 4, 2005

MEMORANDUM

TO: Montgomery County Planning Board

VIA: Jeff Zyontz, Chief
Countywide Planning Division

FROM: Katherine Nelson, Planner Coordinator (301) 495 4622
Countywide Planning Division

SUBJECT: WSSC Potomac Bi-County Water Supply Main
Project No. W-127.01

INFORMATION ITEM – WSSC and Consultant

The Bi-County Water Supply Main is a seven-foot diameter water main to be located between the intersection of Tuckerman Lane and I-270, and the western terminus of the Bi-County Water Tunnel near where Rock Creek crosses the Capital Beltway (I-495) at Stoneybrook Drive. This main is needed to provide adequate water pressure to existing and new development in Prince George's County.

At this early stage in the process many alignments and variation on alignments are under discussion (see attached graphics). The Washington Suburban Sanitary Commission (WSSC), with the help of their interagency review group, is in the process of reducing these down to a manageable number of alignments that are feasible, cost efficient and the least intrusive to the environment and the community.

WSSC and their consultants will brief the Planning Board on the several cut and cover and deep tunneling options. This smaller number of alignments will be studied in detail for environmental and community impacts, and cost. This project has the potential for considerable impacts on both parks and communities as show on the attached graphic.

Staff is not asking for a Planning Board recommendation at this time, but WSSC will be available for discussion with the Board on the information presented.

The Clean Water Connection will . . .

- Allow WSSC to continue to meet future water needs and expectations of our customers.
- Allow WSSC to provide constant, reliable water for daily use and fire protection during peak periods, droughts, and weather-related emergencies.
- Alleviate capacity limitations from an existing 54-inch diameter main that currently delivers water from the Potomac Water Filtration Plant to the existing main at Rock Creek and I-495.
- Involve citizens, customers, and interested stakeholders on the preferred bi-county water supply main alignment and construction method.



For More Information ...

WSSC recognizes the need for extensive community outreach during all phases of the project – especially during the alignment selection. For more information on this project:

☎ **Call our Clean Water Connection hotline** at 301-206-8184.

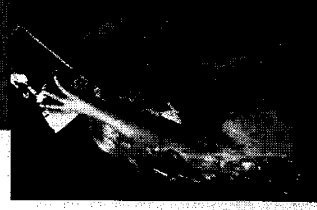
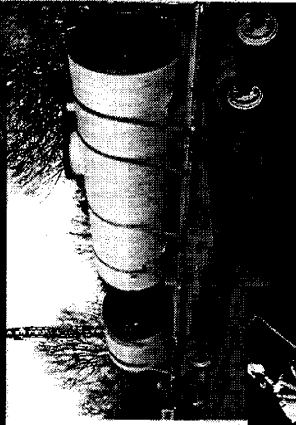
🖥 **Visit our website** at www.wsscwater.com and click on “Projects” then “Major Construction Projects and Studies” to learn more about this project.

🗓 **Attend public information meetings.** We are hosting a series of these meetings throughout the course of the project to inform and update officials, customers, and other stakeholders. See our website for dates and locations.

For more information about the Bi-County Water Supply Main Study, visit our website:
www.wsscwater.com
Or call 301-206-8184



About the Bi-County Water Supply Main Study

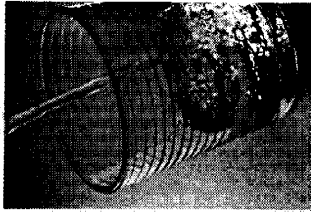


Washington Suburban
Sanitary Commission
1000 Switzer Lane
Bethesda, Maryland 20707

Delivering Safe Water

Safe drinking water is one of the most important public health issues in any society. The men and women of the Washington Suburban Sanitary Commission (WSSC) are proud of their efforts to continually produce safe, clean water that meets or surpasses strict federal US Environmental Protection Agency (EPA) standards.

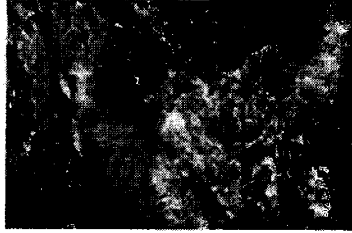
Equally important is delivering a constant, reliable supply of water to WSSC customers through a comprehensive, interconnected distribution system. To fulfill this mission, we recently launched the Bi-County Water Supply Main Alignment Study. The bi-county supply main, or Clean Water Connection, is a crucial project designed to deliver water from WSSC's Potomac Water Filtration Plant (WFP) to customers in Montgomery and Prince George's Counties.



Why do we need this pipeline now?

The need for the project was first identified in the late 1960s. Since that time, WSSC and County planning agencies have been monitoring water system performance, water pressure, demand, and growth patterns to determine an appropriate project implementation program.

Based on current demands and projections, the need for the bi-county supply main becomes evident by the end of this decade. Under drought conditions in 2002, WSSC experienced difficulty in maintaining normal water pressure in some areas of Silver Spring during peak demand periods. This served as a warning that the need for the bi-county supply main is near.



What are the impacts of not building this pipeline?

Short-term impacts of not having this project include low water pressure – below 30 pounds per square inch (psi) – and loss of water storage for fire-fighting and emergency supply in the Silver Spring area. This will have an impact on WSSC's ability to provide water at sufficient pressure for fire protection. Below 30 psi, customers may notice a decrease in performance when using multiple plumbing fixtures simultaneously.

Low pressure also presents the possibility that unexpectedly high flows (such as flow from an open hydrant) will result in complete loss of water.

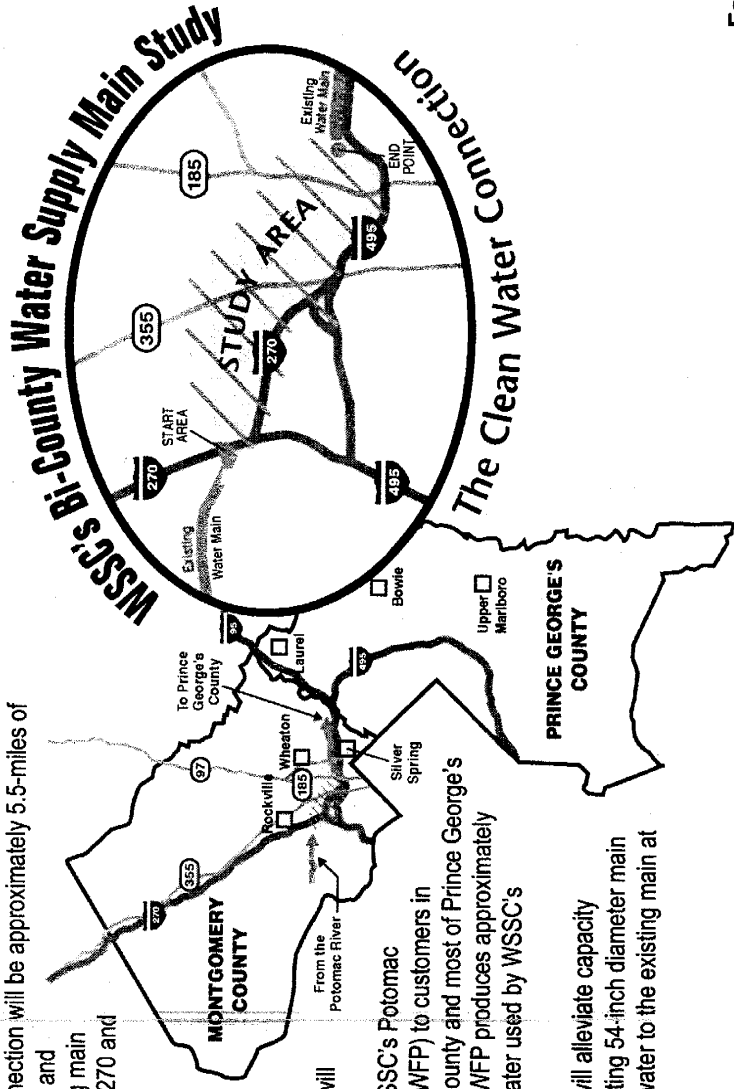
Longer-term impacts may include system-wide mandatory water restrictions during periods of high demand, droughts, and weather-related emergencies, and reduced ability to supply water to Prince George's County.

What is the Clean Water Connection?

The Clean Water Connection will be approximately 5.5-miles of 84-inch diameter pipe, and will connect an existing main at the intersection of I-270 and Tuckerman Lane to another existing main in the area where Rock Creek crosses I-495 in Montgomery County.

The new supply main will help transport clean drinking water from WSSC's Potomac Water Filtration Plant (WFP) to customers in eastern Montgomery County and most of Prince George's County. The Potomac WFP produces approximately three-quarters of the water used by WSSC's 1.6 million customers.

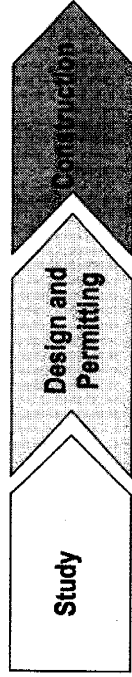
The new supply main will alleviate capacity limitations from an existing 54-inch diameter main that currently delivers water to the existing main at Rock Creek and I-495.



How long will this study take?

The study and planning phase of this project began in the fall of 2004 and should be complete in early 2006. This phase of the project addresses possible alignments, construction methods, costs, community/historical/environmental impacts, and extensive community outreach. When the planning phase is complete, WSSC will seek the concurrence of Montgomery and Prince George's County Councils on a preferred alignment and on construction methods (i.e. open-cut, tunneling, or a combination).

The open-cut method involves digging a trench into the ground into which the pipeline is placed and re-covered. Tunneling involves deep underground borings through which the pipeline is installed. Upon approval from both County Councils, WSSC will begin the next phase of the project – detailed design work. WSSC estimates that it will take 12 to 18 months to complete detailed design. Depending on the construction method selected, construction could take approximately three years to complete.



Fall 2004 Early 2006 Mid-2007 2010