

Landscape Plan 9, 12

LEGEND

- ★ LANDSCAPE APPROVAL
- 0' LIGHT POLE
- 48" CONCRETE

NOTE:
PROVIDE HANDRAILS ON ALL STAIRS AND RAMPS
EXCEEDING 5% SLOPE



IN N.C.P.C. APPROVALS

PROJECT NAME	DATE	APPROVAL
CLARKSBURG TOWN CENTER	12/15/11	APPROVED
BOZZUTO MULTIFAMILY MANOR HOUSES	12/15/11	APPROVED

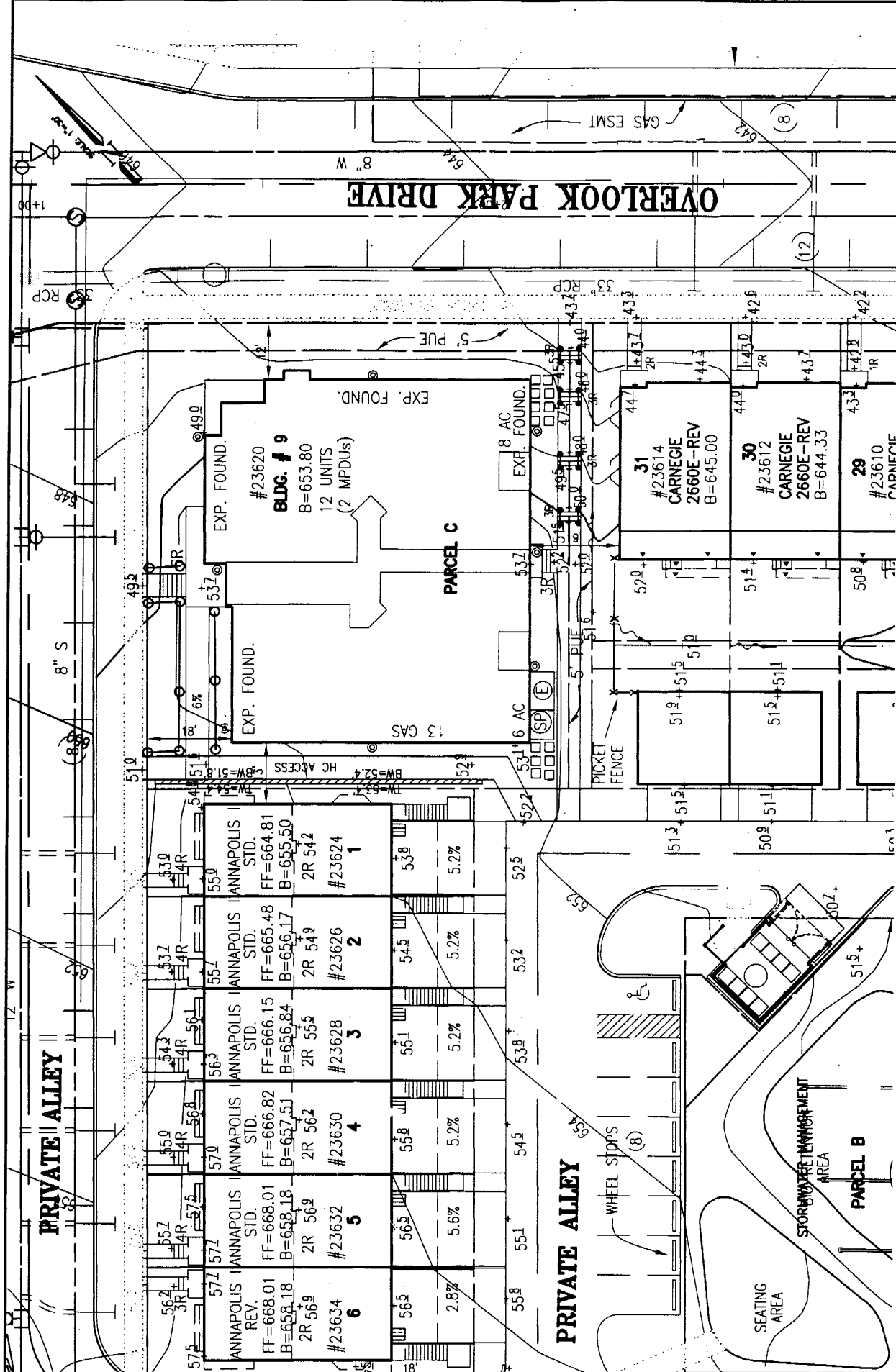
NO.	DATE	DESCRIPTION
1	12/15/11	ISSUED FOR PERMITTING
2	12/15/11	ISSUED FOR PERMITTING
3	12/15/11	ISSUED FOR PERMITTING
4	12/15/11	ISSUED FOR PERMITTING
5	12/15/11	ISSUED FOR PERMITTING
6	12/15/11	ISSUED FOR PERMITTING

THE BOZZUTO DEVELOPMENT COMPANY
6401 Colton Village Blvd., Suite 200 - Clarksburg, Maryland 20740
Phone: 301-281-0000 Fax: 301-281-0070

PHASE I & II
CLARKSBURG TOWN CENTER
BOZZUTO MULTIFAMILY MANOR HOUSES
CLARKSBURG 2ND ELECTION DISTRICT
MONTGOMERY COUNTY, MARYLAND

LandDesign
1414 Poplar Street, Suite 400 - Alexandria, VA 22304
P: 703.549.7794 F: 703.549.7855
www.LandDesign.com

CPJ Associates
Charles F. Johnson & Associates, Inc.
Landscape Architecture
1414 Poplar Street, Suite 400 - Alexandria, VA 22304
P: 703.549.7794 F: 703.549.7855
www.CPJAssociates.com



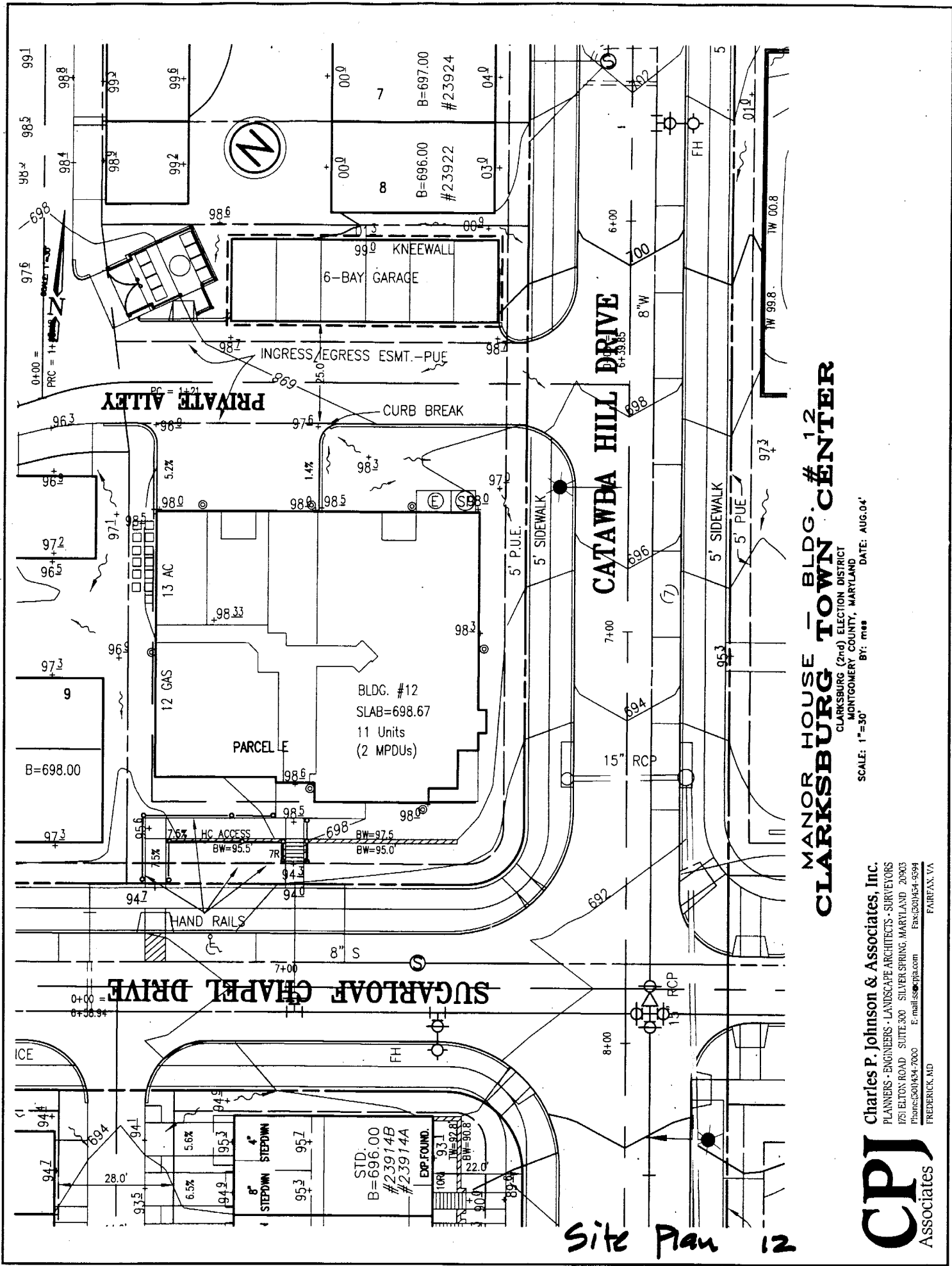
Site Plan 9

MANOR HOUSE - BLDG. #9
CLARKSBURG TOWN CENTER

CLARKSBURG (2nd) ELECTION DISTRICT
 MONTGOMERY COUNTY, MARYLAND
 SCALE: 1"=30'
 BR: mss DATE: AUG.04'

Charles P. Johnson & Associates, Inc.
 PLANNERS • ENGINEERS • LANDSCAPE ARCHITECTS • SURVEYORS
 1751 ELTON ROAD SUITE 300 SILVER SPRING, MARYLAND 20903
 Phone: (301) 834-7000 E-mail: cpj@cpja.com Fax: (301) 834-9594
 FREDERICK, MD FAIRFAX, VA

CPJ
 Associates



Site Plan 12

**MANOR HOUSE - BLDG. #12
CLARKSBURG TOWN CENTER**

CLARKSBURG (2nd) ELECTION DISTRICT
MONTGOMERY COUNTY, MARYLAND
DATE: AUG.04
BY: mss

Charles P. Johnson & Associates, Inc.
PLANNERS - ENGINEERS - LANDSCAPE ARCHITECTS - SURVEYORS
175 ELTON ROAD SUITE 300 SILVER SPRING, MARYLAND 20905
Phone: (301) 934-7000 E-mail: cjp@cpja.com Fax: (301) 934-9594
FREDERICK, MD FAIRFAX, VA



5A