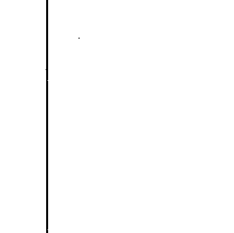


*Landscape Plan 11, 10*

**LEGEND**

- ★ LANDSCAPE ACCENT
- LIGHTING
- LIGHT POLE
- AS CONDUIT

**NOTE:**  
 PROVIDE HANDRAILS ON ALL STAIRS AND RAMPS  
 EXCEEDING 5% SLOPE



**MATERIAL APPROVALS**

NO.	DESCRIPTION	APPROVAL
1	CONCRETE	
2	ASPHALT	
3	GRAVEL	
4	WOOD	
5	PLANTING	
6	PAINT	

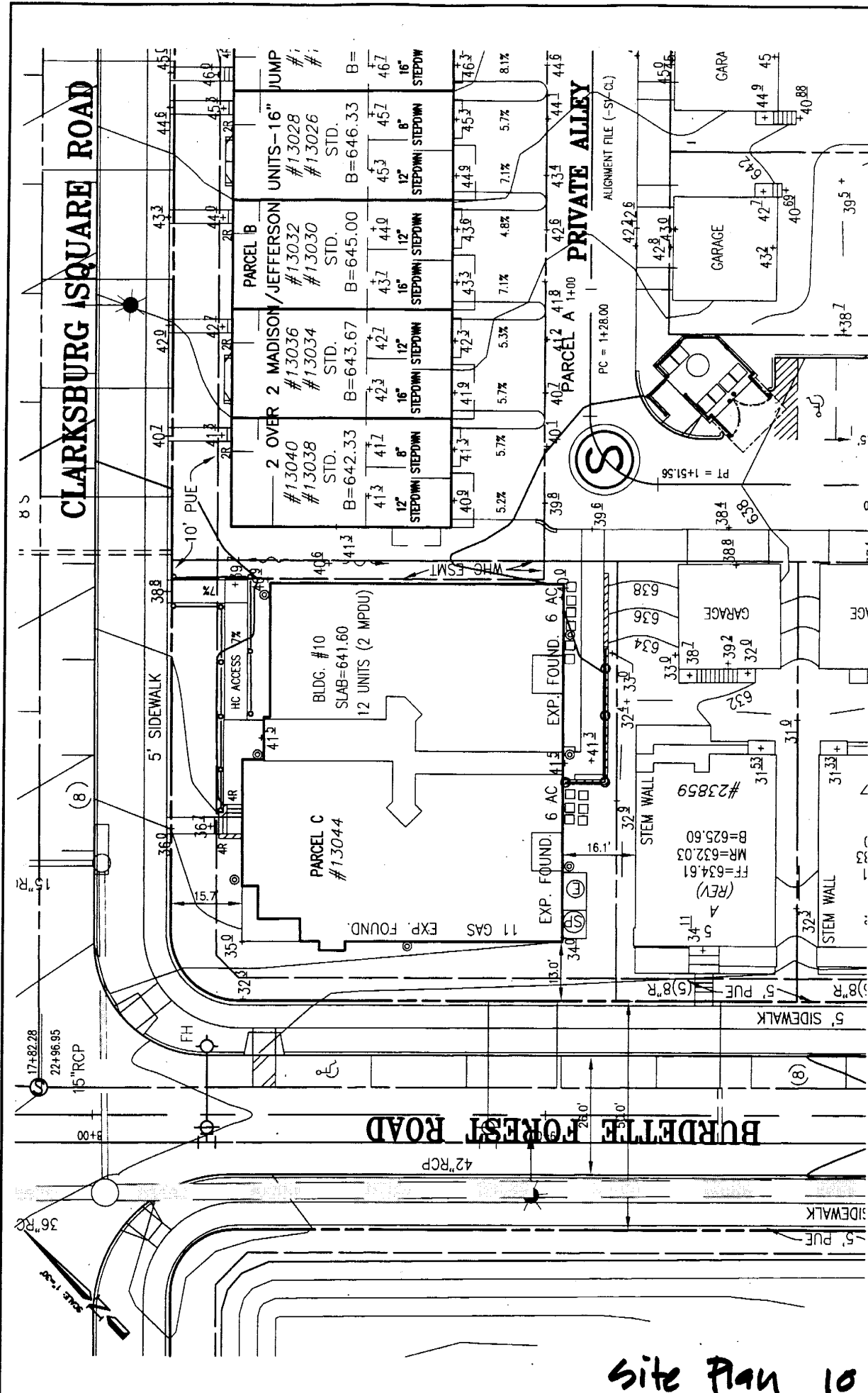
PHASE I & II  
 CLARKSBURG TOWN CENTER  
**BOZZUTO MULTIFAMILY, MANOR HOUSES**  
 CLARKSBURG (2nd) ELECTION DISTRICT  
 MONTGOMERY COUNTY, MARYLAND

**THE BOZZUTO DEVELOPMENT COMPANY**  
 4801 Colton Through Road, Suite 200, Gaithersburg, Maryland 20878-4000  
 Phone: 301-424-6100 Fax: 301-424-6100

**LandDesign**

1813 Prince Street, Suite 400, Alexandria, VA 22304  
 P: 703.544.7784 F: 703.544.4864  
 www.LandDesign.com

**CPJ** Charles P. Johnson & Associates, Inc.  
 LANDSCAPE ARCHITECTS  
 10000 Greenway Drive, Suite 100, Fairfax, VA 22030  
 P: 703.261.1100 F: 703.261.1101  
 www.cpjva.com



**CLARKSBURG SQUARE ROAD**

**BURDETTE FOREST ROAD**

**PRIVATE ALLEY**

**MANOR HOUSE - BLDG. #10  
CLARKSBURG TOWN CENTER**

CLARKSBURG (2nd) ELECTION DISTRICT  
MONTGOMERY COUNTY, MARYLAND

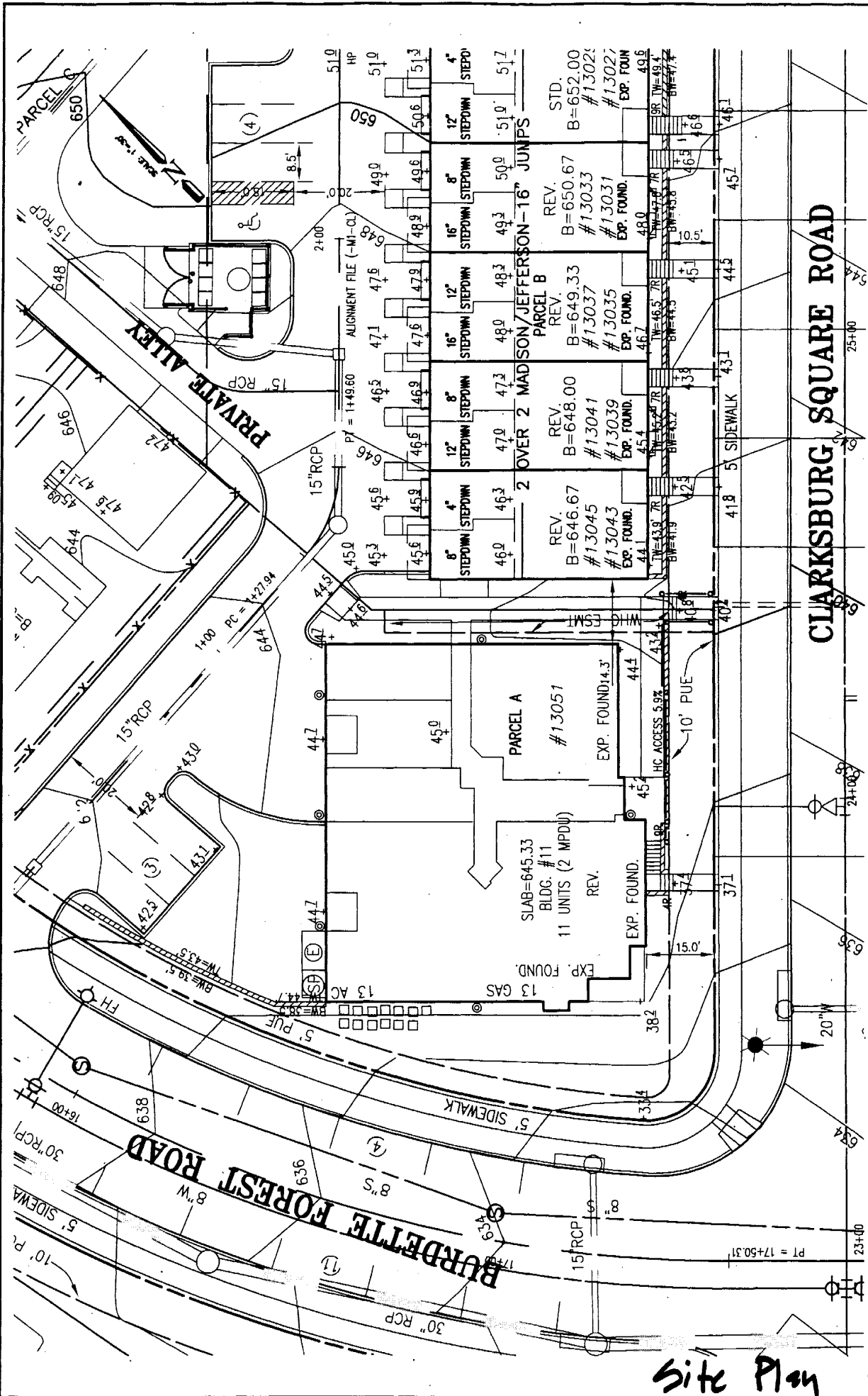
SCALE: 1"=30'  
DATE: AUG.04'

**Charles P. Johnson & Associates, Inc.**  
PLANNERS - ENGINEERS - LANDSCAPE ARCHITECTS - SURVEYORS  
151 EILTON ROAD SUITE 300 SILVER SPRING, MARYLAND 20903  
Phone: (301) 434-7000 E-mail: [cpj@cpja.com](mailto:cpj@cpja.com)  
FREDERICK, MD FAIRFAX, VA

**CPJ Associates**

Site Plan 10

54



Site Plan 11

MANOR HOUSE - BLDG. # 11  
**CLARKSBURG TOWN CENTER**

CLARKSBURG (2nd) ELECTION DISTRICT  
 MONTGOMERY COUNTY, MARYLAND  
 SCALE: 1"=30'  
 BY: mas  
 DATE: AUG.04

**Charles P. Johnson & Associates, Inc.**  
 PLANNERS • ENGINEERS • LANDSCAPE ARCHITECTS • SURVEYORS  
 1751 ELTON ROAD SUITE 300 SILVER SPRING, MARYLAND 20903  
 Phone: (301) 434-7000 E-mail: cpj@cpja.com  
 FREDERICK, MD FAIRFAX, VA

