

CLARKSBURG SQUARE ROAD

MANOR HOUSE TOWN CENTER  
 CLARKSBURG TOWN CENTER  
 CLARKSBURG (2nd) ELECTION DISTRICT  
 MONTGOMERY COUNTY, MARYLAND

SCALE: 1"=30'  
 BY: mes  
 DATE: AUG.04

- INTEGRAL GARAGE
- OFF-STREET PARKING
- ON-STREET PARKING

**Charles P. Johnson & Associates, Inc.**  
 PLANNERS • ENGINEERS • LANDSCAPE ARCHITECTS • SURVEYORS  
 178 ELTON ROAD SUITE 300 SILVER SPRING, MARYLAND 20905  
 Phone: (301) 554-7000 E-mail: cpj@cpj.com  
 FREDERICK, MD FAIRFAX, VA



*Handwritten:* Parking Plan  
 ==  
 MS

SUGARLOAF CHAPEL DRIVE

CATAWBA HILL DRIVE

PRIVATE ALLEY

- INTEGRAL GARAGE
- DETACHED GARAGE
- DRIVEWAY PARKING
- ON-STREET PARKING

PARKING PLAN  
 MANOR HOUSE TOWN CENTER #12  
 CLARKSBURG (2nd) ELECTION DISTRICT  
 MONTGOMERY COUNTY, MARYLAND

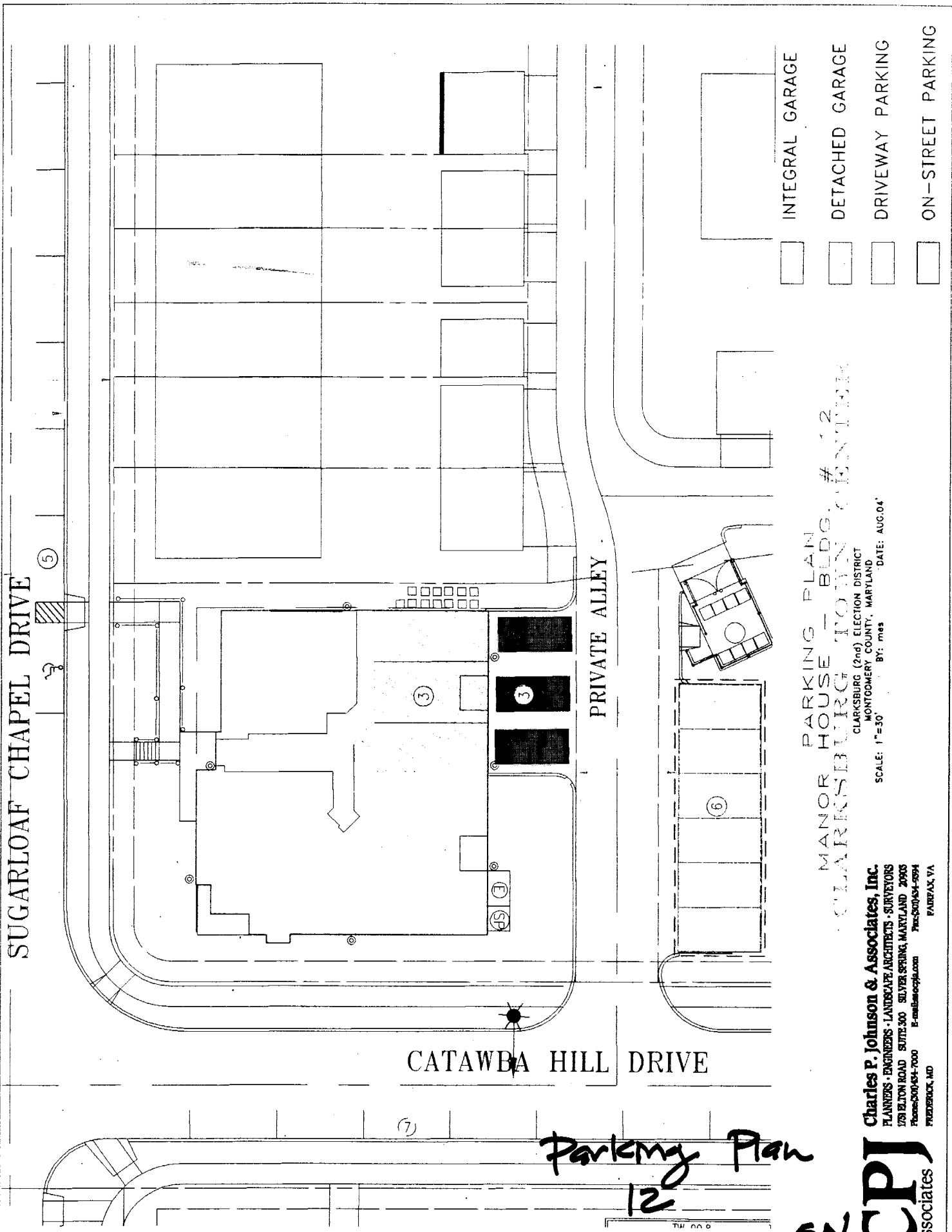
SCALE: 1"=30' BY: mes DATE: AUG.04

**Charles P. Johnson & Associates, Inc.**  
 PLANNERS - ENGINEERS - LANDSCAPE ARCHITECTS - SURVEYORS  
 178 ELTON ROAD SUITE 300 SILVER SPRING, MARYLAND 20903  
 Phone: 301/594-7000 E-mail: cpj@cpj.com  
 FREDERICK, MD PAPERPAK, VA

*Parking Plan*  
 12

SN

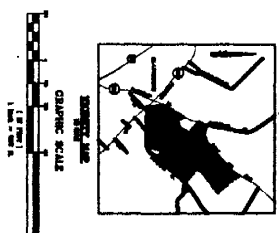
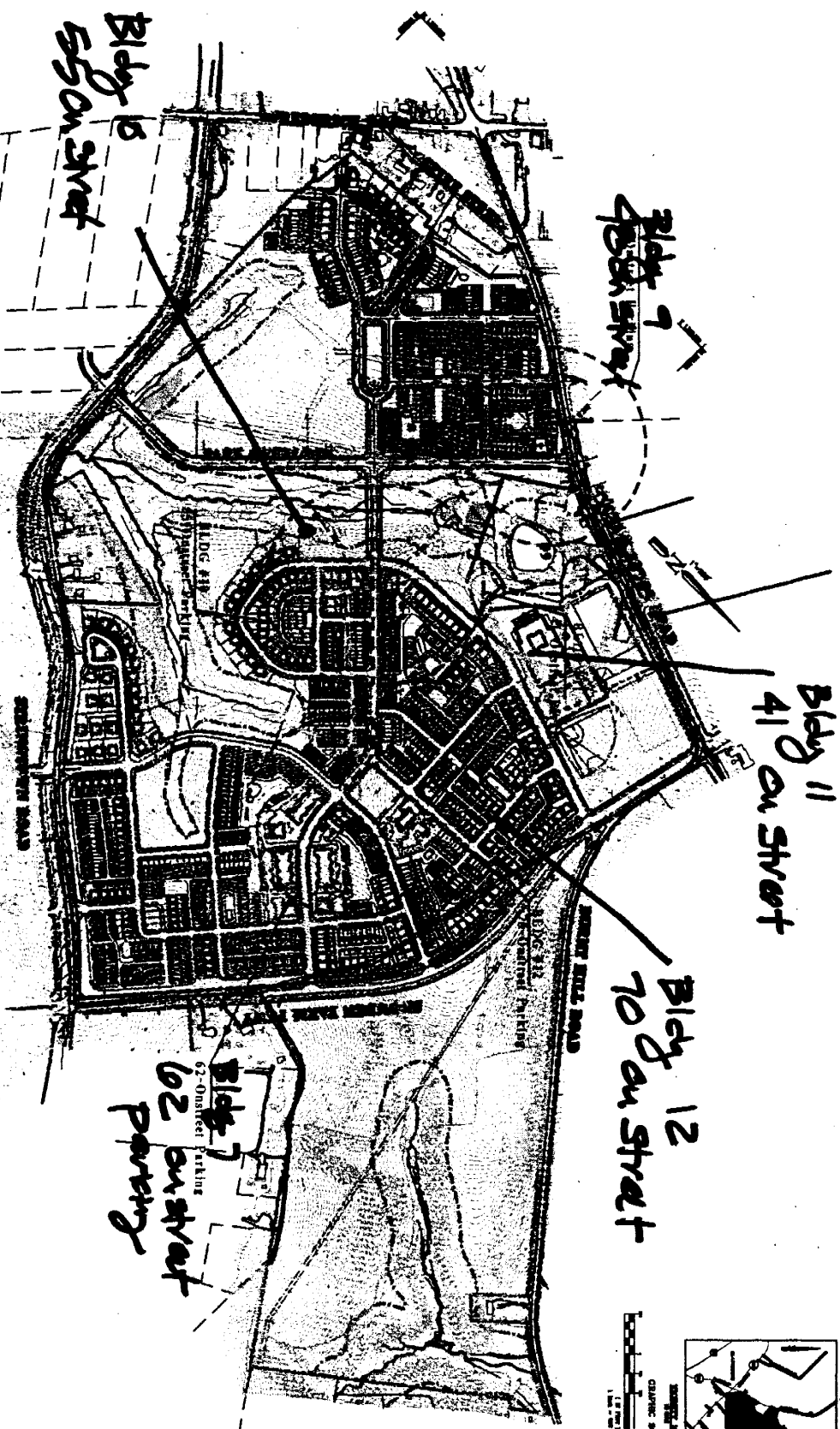
**CPJ**  
 Associates



MANOR HOUSE  
 PARKING EXHIBIT  
 CLARKSBURG TOWN CENTER  
 CLARKSBURG (2nd) ELECTION DISTRICT  
 MONTGOMERY COUNTY, MARYLAND

NO.	DESCRIPTION	DATE	BY

NO.	DESCRIPTION	DATE	BY



# Parking on Public Streets

SP #2-98001

MANOR HOUSE  
 PARKING EXHIBIT  
 CLARKSBURG TOWN CENTER  
 CLARKSBURG (2nd) ELECTION DISTRICT  
 MONTGOMERY COUNTY, MARYLAND

**CPJ** Charles F. Johnson & Associates, Inc.  
 10000 Rockville Pike, Suite 300, Rockville, MD 20850  
 Telephone: (301) 771-1111  
 Fax: (301) 771-1112