

National Register of Historic Places  
Continuation Sheet

United States Department of the Interior  
National Park Service

Section number 8 Page 17

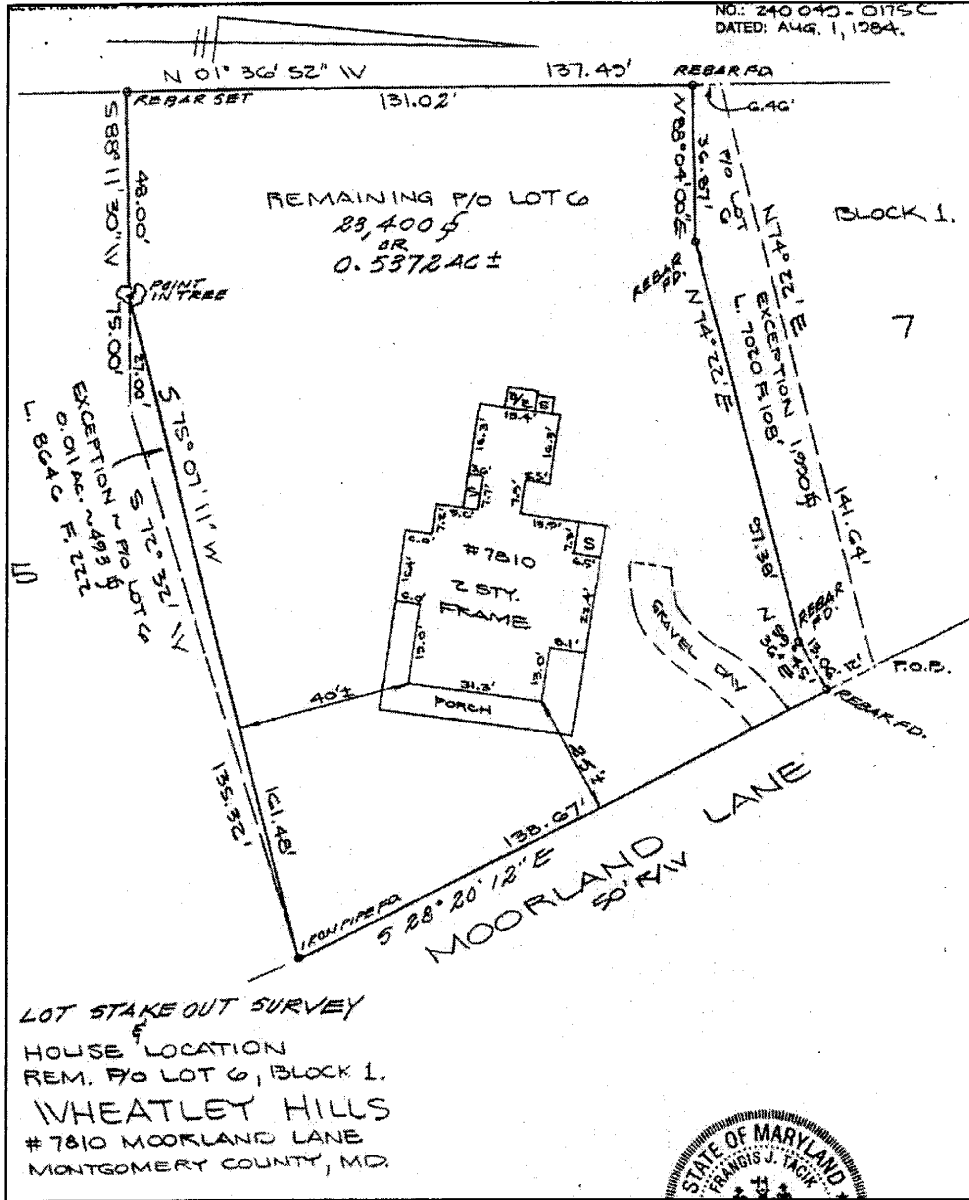


Figure 1. This 1984 survey of the Moreland property shows the house and its property in its present state. The rear kitchen addition is shown at the west end of the house and the house’s angled relationship to the street indicates that Moorland Lane was constructed after the house; this is confirmed by map analysis. Zenith Surveys, Aug. 1, 1984, as included in the deed from the Trustees of Sheldon Z. Kaplan to William B. and Theresa M. McKinnon, Oct. 28, 2002. From the Land Records Office of Montgomery County.

**National Register of Historic Places  
Continuation Sheet****United States Department of the Interior  
National Park Service**Section number 8 Page 18

---



Figure 2. This historic photo (undated) of Samuel Wheatley's son, Charles Wheatley, includes a partial view of the house's original front porch and its tapered columns. From the collection of William and Theresa McKinnon.

# National Register of Historic Places Continuation Sheet

# United States Department of the Interior National Park Service

Section number 8 Page 19

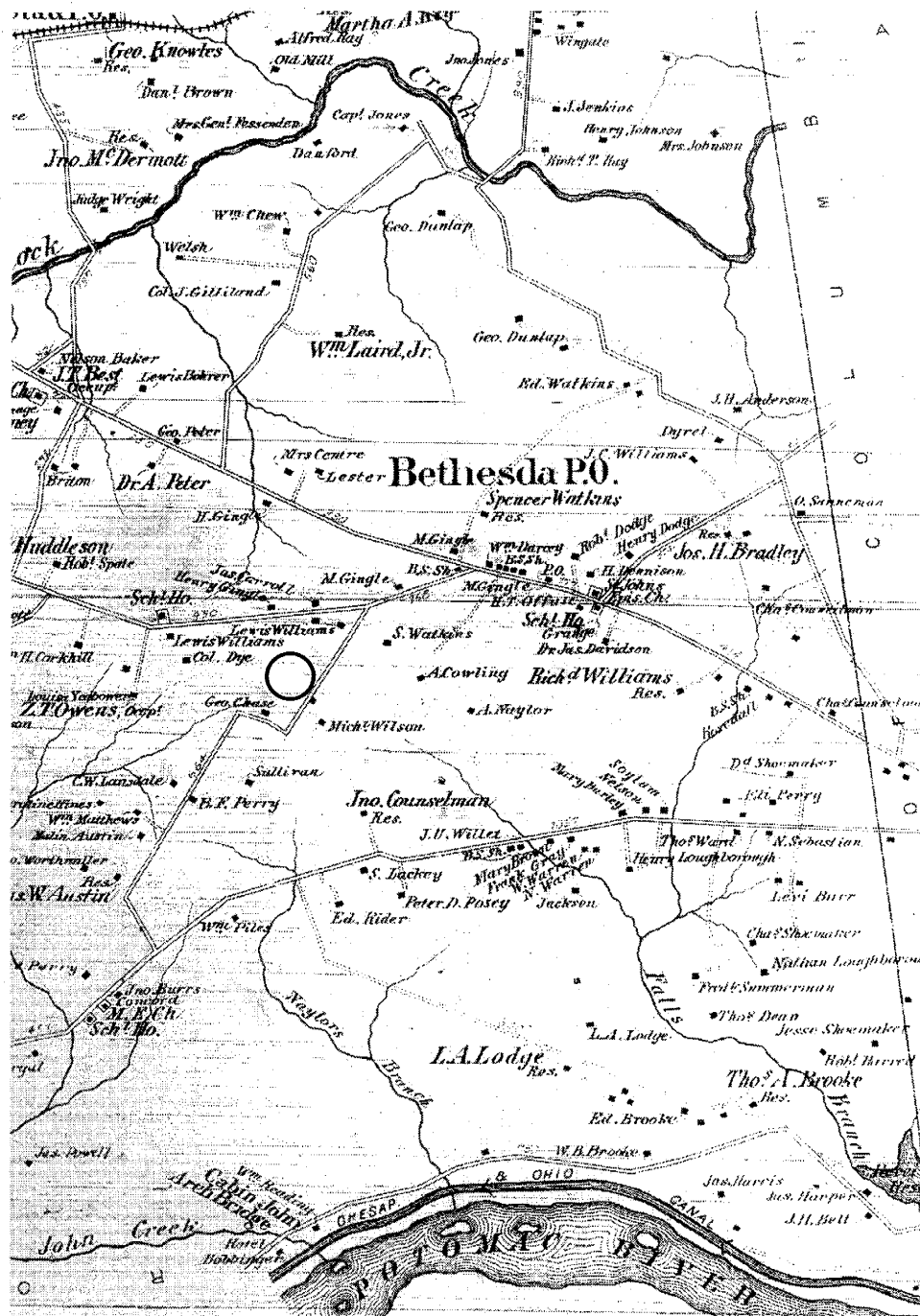


Figure 3. This 1878 map illustrates the landowners of large tracts of land in the Bethesda vicinity, including Madison Gingell. The location of Moreland, sixteen years before it was built, is shown circled above.  
 G.M. Hopkins, 1878. From the Washingtoniana Division of the District of Columbia Public Library.