

# National Register of Historic Places Continuation Sheet

United States Department of the Interior  
National Park Service

Section number 8 Page 20

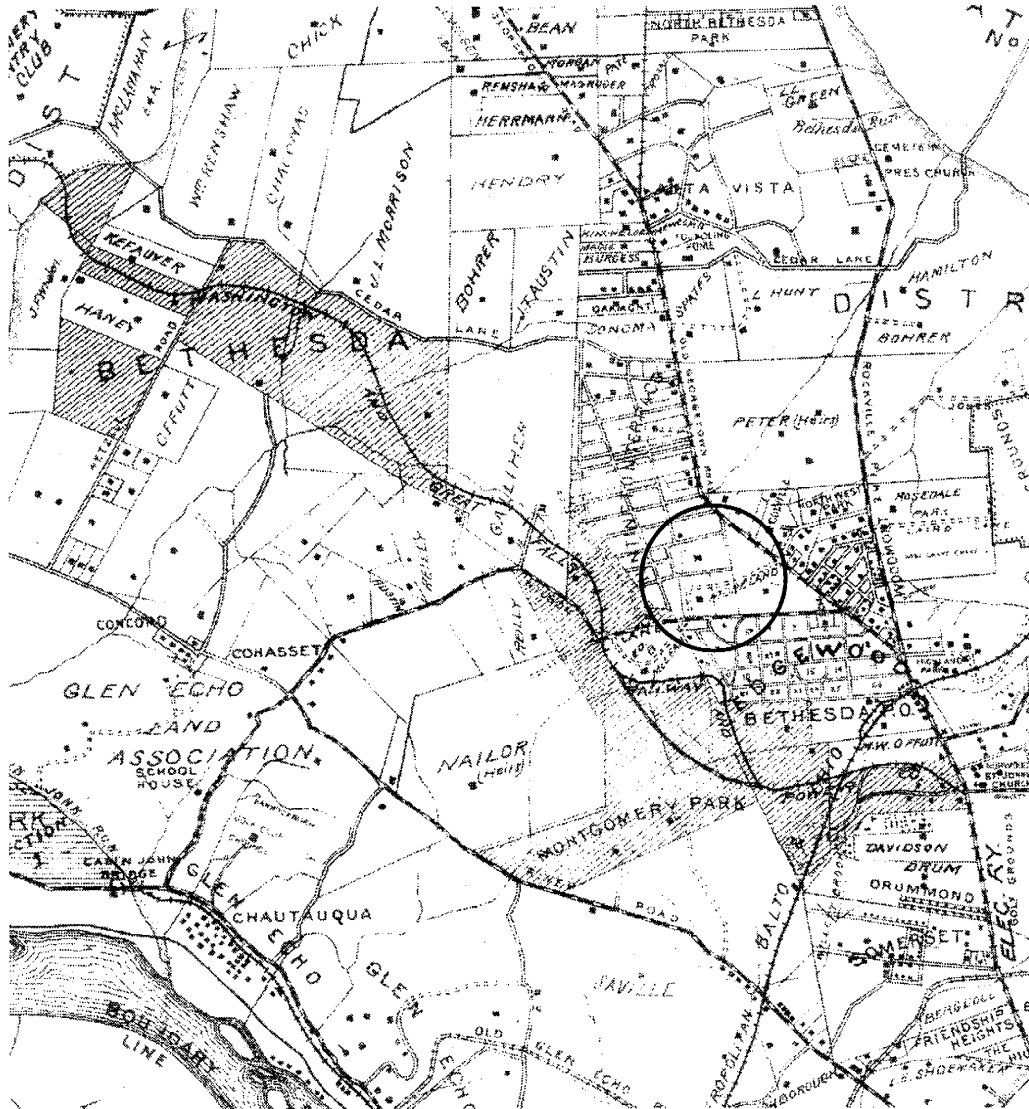


Figure 4. This 1915 map of Bethesda shows Moreland, shown circled above, in an environment of emerging roadways and suburbs (such as Edgewood just south of Moreland) amid many larger properties still used as farmland.

S.D. Caldwell, "Map of Bethesda District, Montgomery County, Maryland," *Directory* (1915), as reproduced in William Offutt, *Bethesda: A Social History of the Area through World War Two* (Bethesda: Innovation Game, 1995): 302-03.

# National Register of Historic Places Continuation Sheet

# United States Department of the Interior National Park Service

Section number 8 Page 21

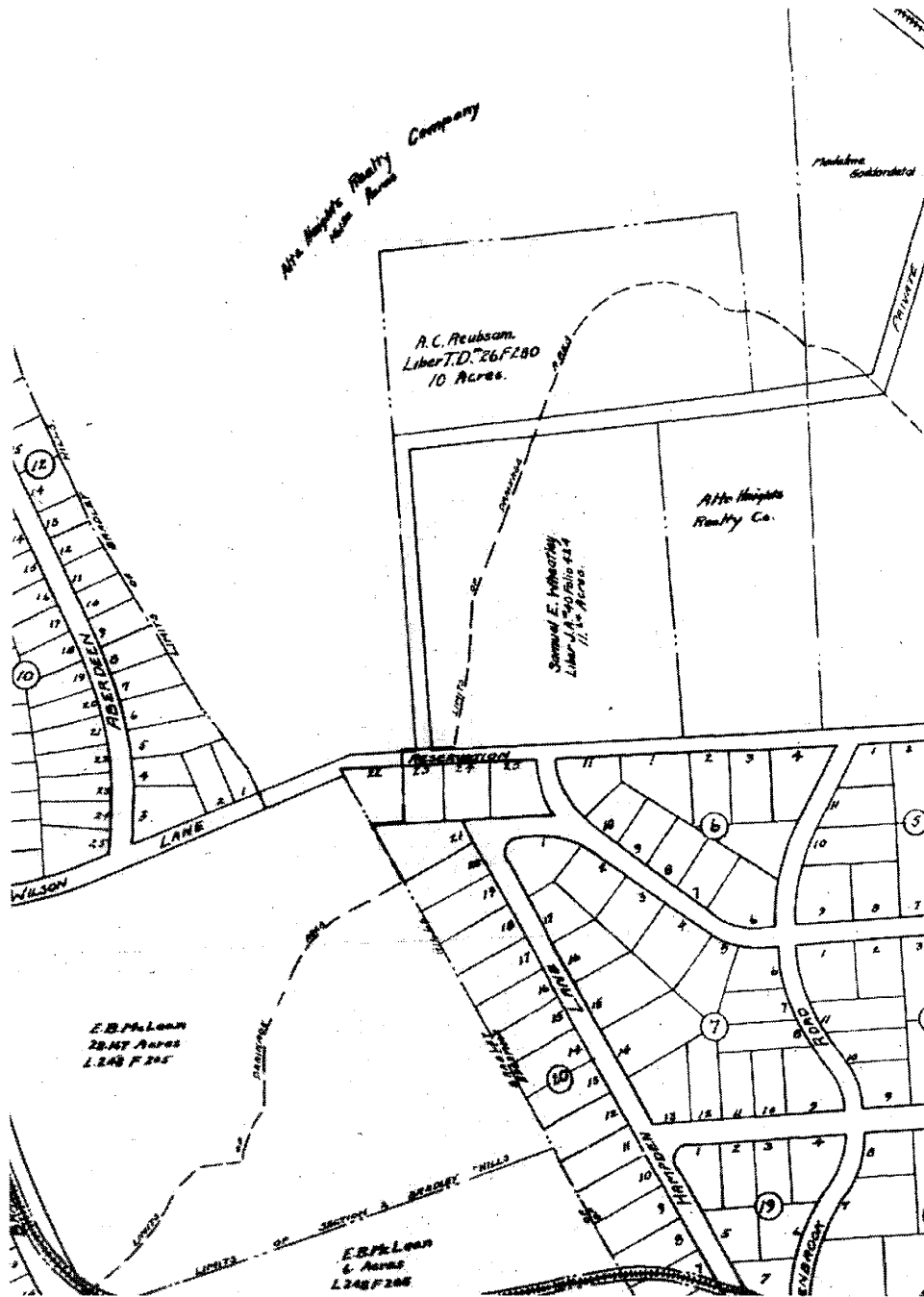


Figure 5. This 1916 map shows Samuel Wheatley's Moreland, at the center of the image, surrounded by both open land and newly platted subdivisions along Wilson Lane, seen bisecting the center of the map.

F.H.M. Klinge, *Property Atlas of Montgomery County, Maryland* (Landsdale, Pennsylvania, 1916), from the Montgomery County Historical Society.

# National Register of Historic Places Continuation Sheet

United States Department of the Interior  
National Park Service

Section number 8 Page 22



Figure 6. Moreland is depicted on this 1931 map, surrounded by subdivided, but mostly unbuild, property. The footprint of Wheatley's house is at the center of the estate, shown circled, with four outbuildings of a variety of sizes randomly arranged to the north. At the north end of the property, the tenant house is shown sited along York Lane. A curvilinear private drive traverses the property between Wilson and York lanes.

F.H.M. Klinge, *Property Atlas of Montgomery County, Maryland* (Landsdale, Pennsylvania, 1931), from the Montgomery County Historical Society.