

**National Register of Historic Places
Continuation Sheet****United States Department of the Interior
National Park Service**Section number 8 Page 23



Figure 7. Moreland is seen here from the south in this historic photo (undated) before its surrounding property was subdivided and developed. It appears that the rear addition housing the kitchen was not yet constructed when this photograph was taken. From the collection of William and Theresa McKinnon.

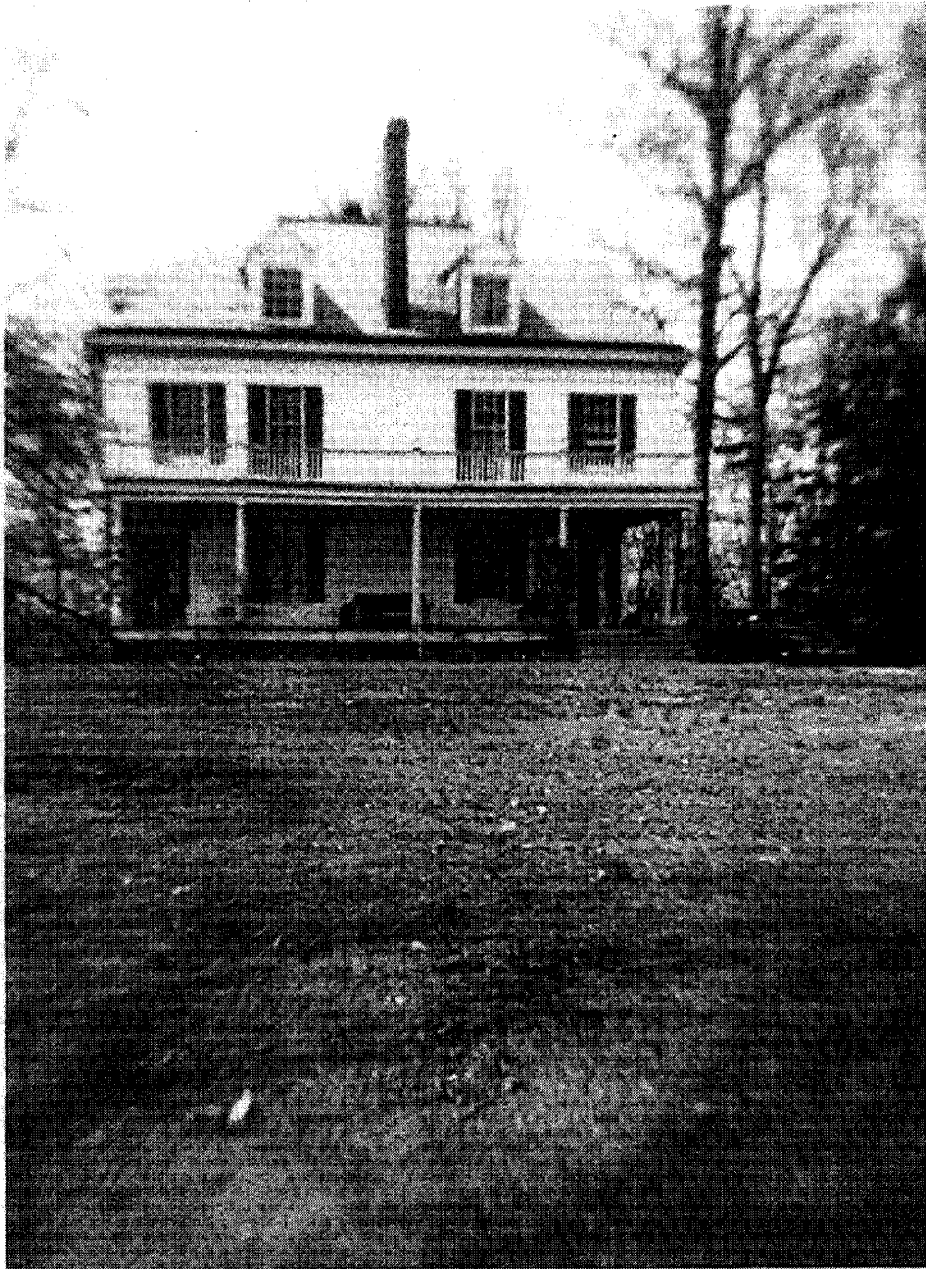
**National Register of Historic Places
Continuation Sheet****United States Department of the Interior
National Park Service**Section number 8 Page 24

Figure 8. This historic photo (undated) predates the construction of Moorland Lane in the 1940s; this view shows the east façade (front) of the house in its rural setting. From the collection of William and Theresa McKinnon.

**National Register of Historic Places
Continuation Sheet**

**United States Department of the Interior
National Park Service**

Section number 8 Page 25



Figure 9. The rear, two-story kitchen addition, seen at the left, is depicted in this historic photo (undated) in its present form.
From the collection of William and Theresa McKinnon.