

**Maryland Historical Trust
Maryland Inventory of
Historic Properties Form**

Inventory No. M: 35-155

Name
Continuation Sheet

Number 7 Page 5



Figure 4. Front (West) Elevation. The two front gables and the porches to either side are all additions from 1925. Note the dormer in the roof of the original bungalow, behind. Drawing by Jason Gagen, copyright 2004 by Brenneman & Pagenstecher, Inc.

Maryland Historical Trust Maryland Inventory of Historic Properties Form

Inventory No. M: 35-155

Name
Continuation Sheet

Number 7 Page 6



Figure 5. Left (North) Elevation. The projecting bay and portico on the right are part of the 1925 addition. The roofline of the original bungalow was raised in the late 1930's from a 5/12 pitch to an 8/12 pitch to provide more headroom on the second floor. Porch and bump out at left are part of the 1930's renovation as well. *Drawing by Jason Gagen, copyright 2004 by Brenneman & Pagenstecher, Inc.*

Maryland Historical Trust Maryland Inventory of Historic Properties Form

Inventory No. M: 35-155

Name
Continuation Sheet

Number 7 Page 7

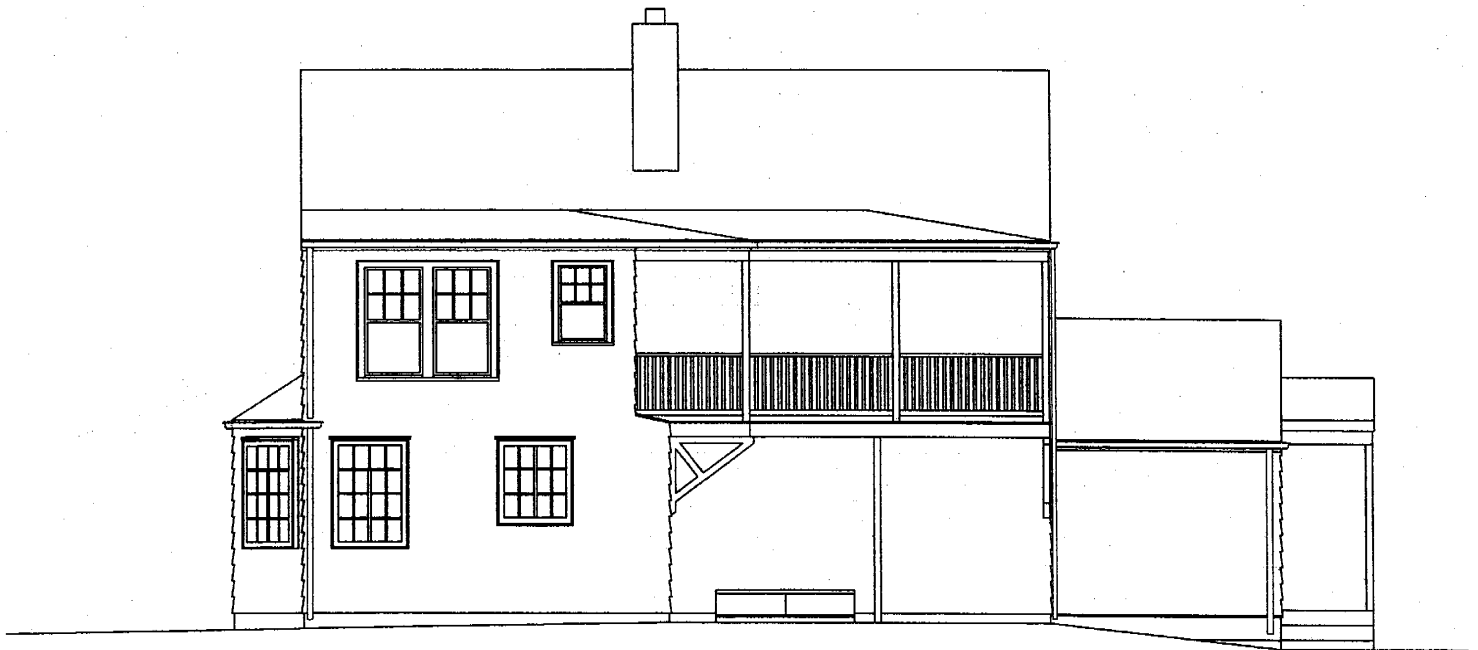


Figure 6. Rear (East) Elevation. The two-storey addition and the bay and the left, as well as the second floor porch are all additions from the late 1930's. *Drawing by Jason Gagen, copyright 2004 by Brenneman & Pagenstecher, Inc.*

Maryland Historical Trust Maryland Inventory of Historic Properties Form

Inventory No. M: 35-155

Name
Continuation Sheet

Number 7 Page 8



Figure 7. Right (South) Elevation. Both bays are additions from the 1930's. Drawing by Jason Gagen, copyright 2004 by Brenneman & Pagenstecher, Inc.