

Maryland Historical Trust Maryland Inventory of Historic Properties Form

Inventory No. M: 35-155

Name
Continuation Sheet

Number 9 Page 3



Figure 11. The Sycamore Store sign and storefront bow window, a local landmark. *Photo, courtesy of the Sycamore Islander newsletter, 1999*



Figure 12. The Sycamore Store, closed for business. *Photo, courtesy of the Sycamore Islander newsletter, 1999*

**Maryland Historical Trust
Maryland Inventory of
Historic Properties Form**

Inventory No. M: 35-155

Name
Continuation Sheet

Number 9 Page 4



The Glen Echo Railroad barn and powerhouse

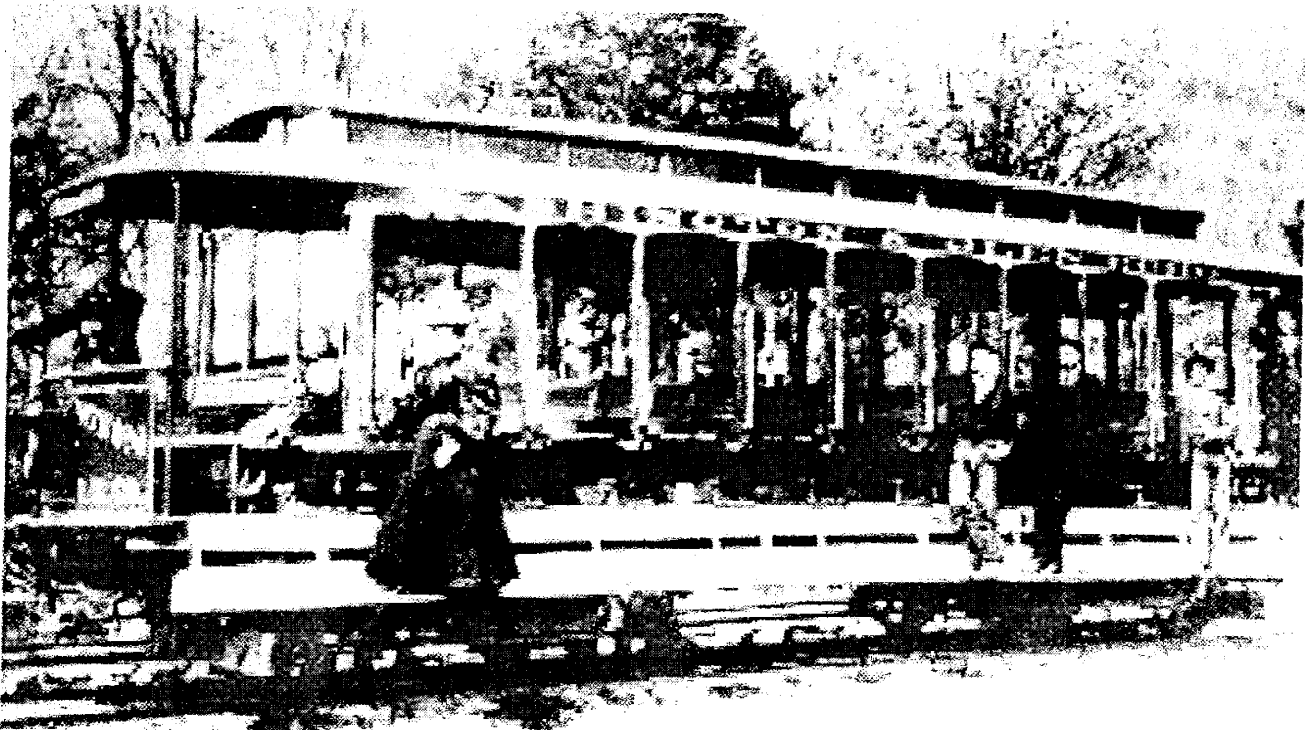
Figure 13. Across Walhonding Road from the Sycamore store stood the car-barn and powerhouse for the Glen Echo Electric Railway, shown here circa 1891-1900. Its vandalized walls lasted well into the 1960's, and large stones in yards throughout the area came from its remains. Photo; MNCPPC, Robert Truax.

**Maryland Historical Trust
Maryland Inventory of
Historic Properties Form**

Inventory No. M: 35-155

Name
Continuation Sheet

Number 9 Page 5



An open car on the WW&GF

Figure 14. A trolley car from the early 1900's of the type that served the Sycamore Stop at Conduit and Walhonding Roads. The photo caption is mislabeled as an open car on the Western Washington and Great Falls line, but it is, in fact a car from the Washington and Glen Echo Railroad Company that traveled up Walhonding road and then on to Friendship Heights and Chevy Chase Circle. Photo; MNCPPC, Robert Truax.

**Maryland Historical Trust
Maryland Inventory of
Historic Properties Form**

Inventory No. M: 35-155

Name
Continuation Sheet

Number 9 Page 6

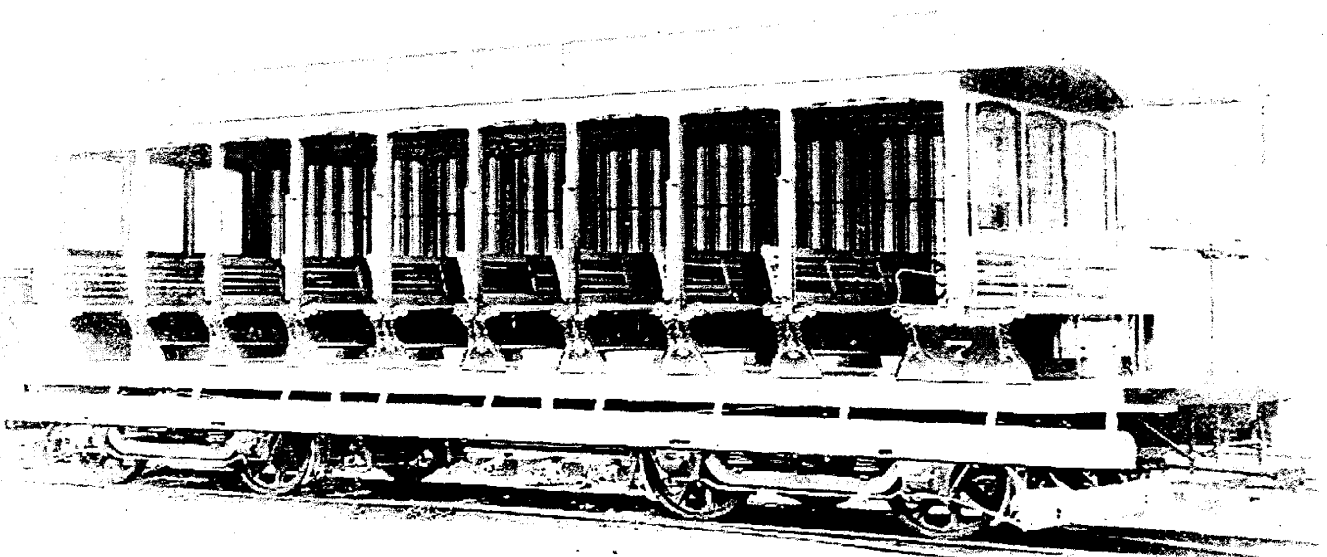


Figure 15. Another view (sans riders) of the same type of trolley car.