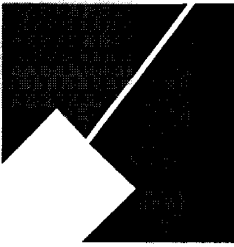


Item #2

M-NCPPC



MONTGOMERY COUNTY DEPARTMENT OF PARK AND PLANNING

THE MARYLAND-NATIONAL CAPITAL
PARK AND PLANNING COMMISSION

8787 Georgia Avenue
Silver Spring, Maryland 20910-3760
301-495-4500, www.mncppc.org

M E M O R A N D U M

DATE: February 11, 2005
TO: Montgomery County Planning Board
FROM: Catherine Conlon
Development Review Division
(301) 495-4542
SUBJECT: Informational Maps for Subdivision Items on the
Planning Board's Agenda for February 17, 2005.

Attached are copies of plan drawings for item #02, #03, #04, #05, #06, and #08. These subdivision items are scheduled for Planning Board consideration on February 17, 2005. The items are further identified as follows:

Agenda Item #02 - Preliminary Plan 1-05040
Hull Property

Agenda Item #03 - Preliminary Plan 1-87040A
Mother of God

Agenda Item #04 - Preliminary Plan 1-05005
Macon Construction

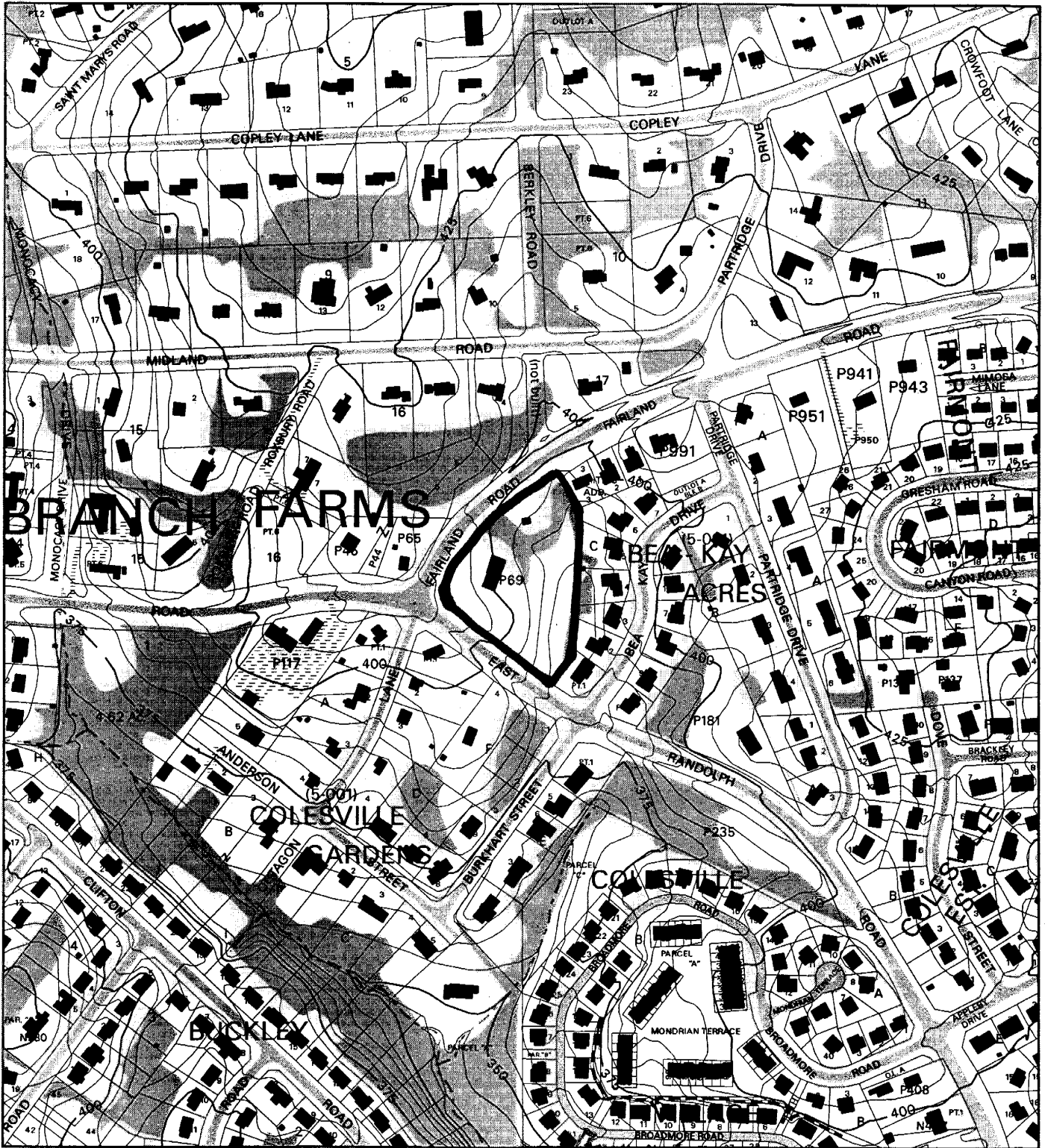
Agenda Item #05 - Preliminary Plan 1-04080
Damascus Hills

Agenda Item #06 - Preliminary Plan 1-05024
Tong Property

Agenda Item #08 - Pre-Preliminary Plan 1-05011
Offutt Estates

Attachment

HULL PROPERTY (1-05040)



Map compiled on October 20, 2004 at 10:18 AM | Site located on base sheet no - 217NE01

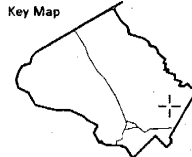
NOTICE

The planimetric, property, and topographic information shown on this map is based on copyrighted Map Products from the Montgomery County Department of Park and Planning of the Maryland - National Capital Park and Planning Commission, and may not be copied or reproduced without written permission from M-NCPPC.

Property lines are compiled by adjusting the property lines to topography created from aerial photography and should not be interpreted as actual field surveys. Planimetric features were compiled from 1:14400 scale aerial photography using stereo photogrammetric methods.

This map is created from a variety of data sources, and may not reflect the most current conditions in any one location and may not be completely accurate or up to date. All map features are approximately within five feet of their true location. This map may not be the same as a map of the same area plotted at an earlier time as the data is continuously updated. Use of this map, other than for general planning purposes is not recommended. - Copyright 1998

Key Map

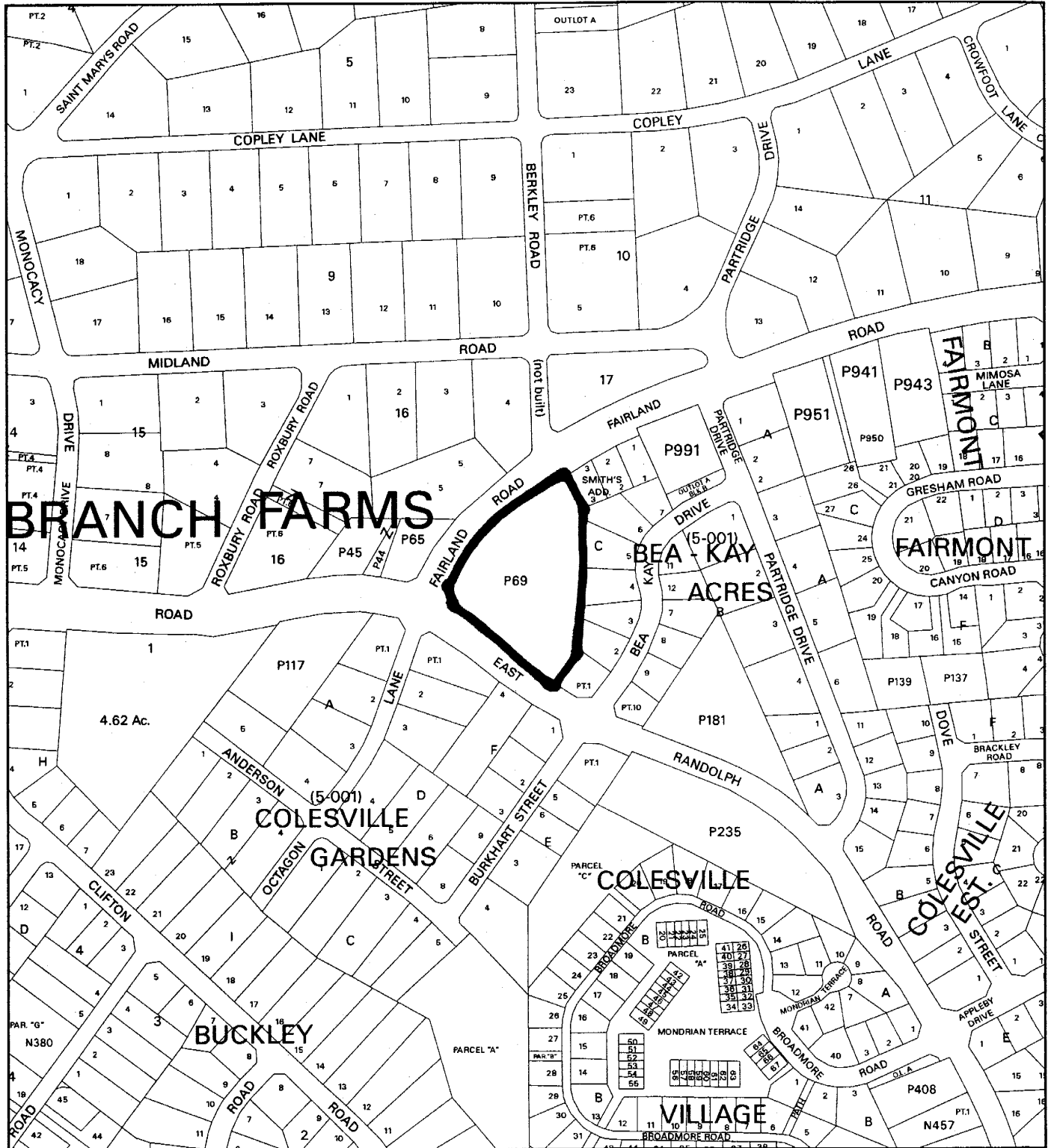


Research & Technology Center

0 400

1 inch = 400 feet
1 : 4800

HULL PROPERTY (1-05040)



Map compiled on October 20, 2004 at 10:20 AM | Site located on base sheet no - 217NE01

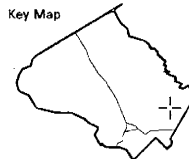
NOTICE

The planimetric, property, and topographic information shown on this map is based on copyrighted Map Products from the Montgomery County Department of Park and Planning of the Maryland-National Capital Park and Planning Commission, and may not be copied or reproduced without written permission from M-NCPPC.

Property lines are compiled by adjusting the property lines to topography created from aerial photography and should not be interpreted as actual field surveys. Planimetric features were compiled from 1:14400 scale aerial photography using stereo photogrammetric methods.

This map is created from a variety of data sources, and may not reflect the most current conditions in any one location and may not be completely accurate or up to date. All map features are approximately within five feet of their true location. This map may not be the same as a map of the same area plotted at an earlier time as the data is continuously updated. Use of this map, other than for general planning purposes is not recommended. - Copyright 1998

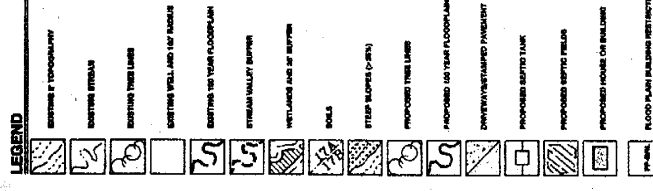
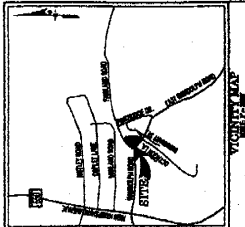
Key Map



Research & Technology Center

0 400

1 inch = 400 feet
1 : 4800



NO.	DESCRIPTION	DATE	BY
1	PRELIMINARY PLAN	10/20/20	JK
2	REVISION		
3	REVISION		
4	REVISION		
5	REVISION		
6	REVISION		
7	REVISION		
8	REVISION		
9	REVISION		
10	REVISION		
11	REVISION		
12	REVISION		
13	REVISION		
14	REVISION		
15	REVISION		
16	REVISION		
17	REVISION		
18	REVISION		
19	REVISION		
20	REVISION		
21	REVISION		
22	REVISION		
23	REVISION		
24	REVISION		
25	REVISION		
26	REVISION		
27	REVISION		
28	REVISION		
29	REVISION		
30	REVISION		
31	REVISION		
32	REVISION		
33	REVISION		
34	REVISION		
35	REVISION		
36	REVISION		
37	REVISION		
38	REVISION		
39	REVISION		
40	REVISION		
41	REVISION		
42	REVISION		
43	REVISION		
44	REVISION		
45	REVISION		
46	REVISION		
47	REVISION		
48	REVISION		
49	REVISION		
50	REVISION		

1. Check notes, and the final plan for any changes to be made to the construction information, including notes, etc., and amendments thereto.

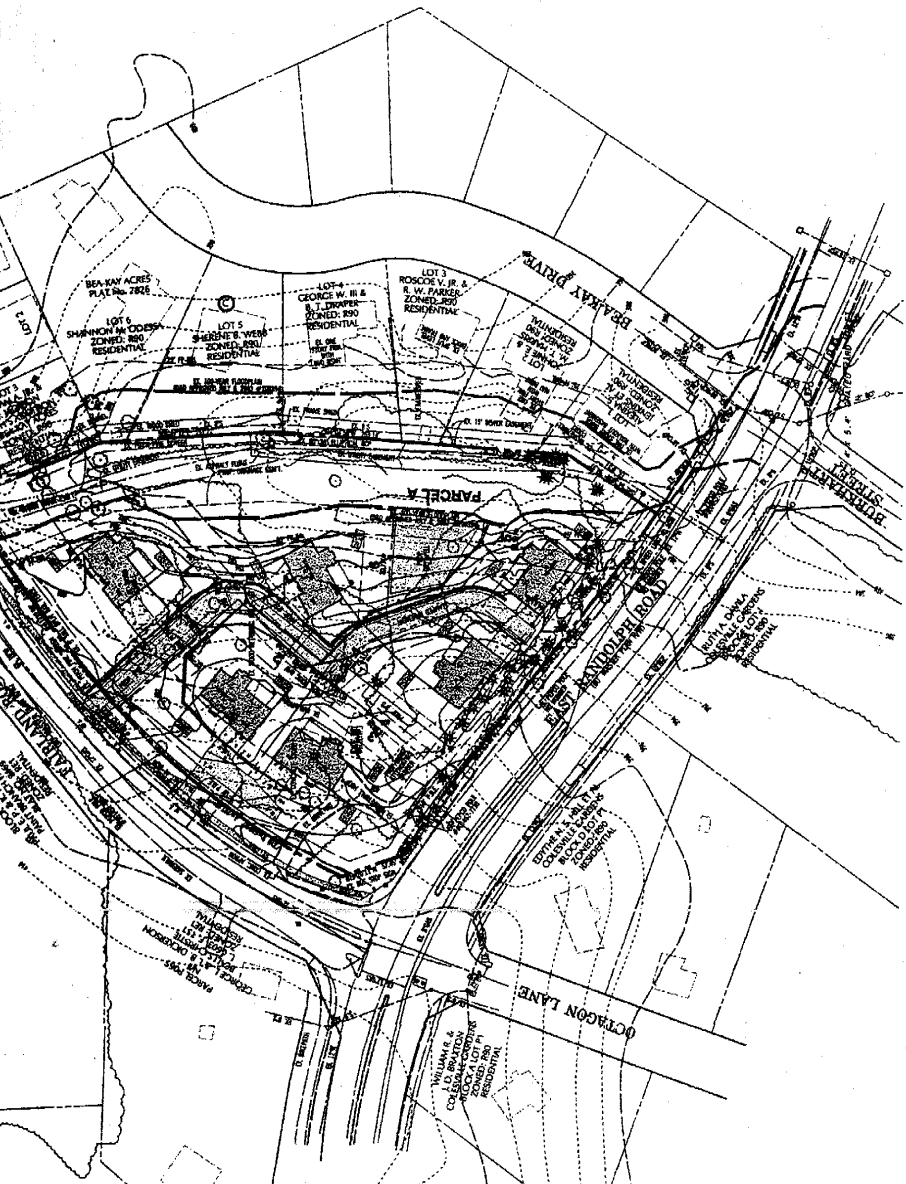
- GENERAL NOTES**
1. Area indicated: 1.17 Acres
 2. Project: 1.17 Acres
 3. The boundary information is from a combination of deed and plat records.
 4. Property line according to deed: 1.17 Acres
 5. All other data from: 1.17 Acres
 6. This site is within the 100-foot flood zone. (Zone 100)
 7. This site is within the 500-year flood zone. (Zone 500)
 8. All existing structures on the site are to be removed.
 9. This plan is to be used for the construction of the proposed development. The location of existing structures and utilities are shown to their approximate locations as indicated on the plan. The exact location of existing structures and utilities is to be verified by the contractor. (Check with utility companies for exact location of existing structures and utilities.)
 10. All existing structures on the site are to be removed.

DEVELOPMENT STANDARDS

NO.	DESCRIPTION	MINIMUM	MAXIMUM
1	Lot area (R-1, R-2, R-3)	5,000 sq. ft.	5,000 sq. ft.
2	Lot width (R-1, R-2, R-3)	25 ft.	25 ft.
3	Lot depth (R-1, R-2, R-3)	25 ft.	25 ft.
4	Setback (front) (R-1, R-2, R-3)	20 ft.	20 ft.
5	Setback (side/rear) (R-1, R-2, R-3)	5 ft.	5 ft.
6	Setback (rear) (R-1, R-2, R-3)	5 ft.	5 ft.
7	Setback (side) (R-1, R-2, R-3)	5 ft.	5 ft.
8	Setback (front) (R-1, R-2, R-3)	5 ft.	5 ft.
9	Setback (side/rear) (R-1, R-2, R-3)	5 ft.	5 ft.
10	Setback (rear) (R-1, R-2, R-3)	5 ft.	5 ft.
11	Setback (side) (R-1, R-2, R-3)	5 ft.	5 ft.
12	Setback (front) (R-1, R-2, R-3)	5 ft.	5 ft.
13	Setback (side/rear) (R-1, R-2, R-3)	5 ft.	5 ft.
14	Setback (rear) (R-1, R-2, R-3)	5 ft.	5 ft.
15	Setback (side) (R-1, R-2, R-3)	5 ft.	5 ft.
16	Setback (front) (R-1, R-2, R-3)	5 ft.	5 ft.
17	Setback (side/rear) (R-1, R-2, R-3)	5 ft.	5 ft.
18	Setback (rear) (R-1, R-2, R-3)	5 ft.	5 ft.
19	Setback (side) (R-1, R-2, R-3)	5 ft.	5 ft.
20	Setback (front) (R-1, R-2, R-3)	5 ft.	5 ft.
21	Setback (side/rear) (R-1, R-2, R-3)	5 ft.	5 ft.
22	Setback (rear) (R-1, R-2, R-3)	5 ft.	5 ft.
23	Setback (side) (R-1, R-2, R-3)	5 ft.	5 ft.
24	Setback (front) (R-1, R-2, R-3)	5 ft.	5 ft.
25	Setback (side/rear) (R-1, R-2, R-3)	5 ft.	5 ft.
26	Setback (rear) (R-1, R-2, R-3)	5 ft.	5 ft.
27	Setback (side) (R-1, R-2, R-3)	5 ft.	5 ft.
28	Setback (front) (R-1, R-2, R-3)	5 ft.	5 ft.
29	Setback (side/rear) (R-1, R-2, R-3)	5 ft.	5 ft.
30	Setback (rear) (R-1, R-2, R-3)	5 ft.	5 ft.
31	Setback (side) (R-1, R-2, R-3)	5 ft.	5 ft.
32	Setback (front) (R-1, R-2, R-3)	5 ft.	5 ft.
33	Setback (side/rear) (R-1, R-2, R-3)	5 ft.	5 ft.
34	Setback (rear) (R-1, R-2, R-3)	5 ft.	5 ft.
35	Setback (side) (R-1, R-2, R-3)	5 ft.	5 ft.
36	Setback (front) (R-1, R-2, R-3)	5 ft.	5 ft.
37	Setback (side/rear) (R-1, R-2, R-3)	5 ft.	5 ft.
38	Setback (rear) (R-1, R-2, R-3)	5 ft.	5 ft.
39	Setback (side) (R-1, R-2, R-3)	5 ft.	5 ft.
40	Setback (front) (R-1, R-2, R-3)	5 ft.	5 ft.
41	Setback (side/rear) (R-1, R-2, R-3)	5 ft.	5 ft.
42	Setback (rear) (R-1, R-2, R-3)	5 ft.	5 ft.
43	Setback (side) (R-1, R-2, R-3)	5 ft.	5 ft.
44	Setback (front) (R-1, R-2, R-3)	5 ft.	5 ft.
45	Setback (side/rear) (R-1, R-2, R-3)	5 ft.	5 ft.
46	Setback (rear) (R-1, R-2, R-3)	5 ft.	5 ft.
47	Setback (side) (R-1, R-2, R-3)	5 ft.	5 ft.
48	Setback (front) (R-1, R-2, R-3)	5 ft.	5 ft.
49	Setback (side/rear) (R-1, R-2, R-3)	5 ft.	5 ft.
50	Setback (rear) (R-1, R-2, R-3)	5 ft.	5 ft.
51	Setback (side) (R-1, R-2, R-3)	5 ft.	5 ft.
52	Setback (front) (R-1, R-2, R-3)	5 ft.	5 ft.
53	Setback (side/rear) (R-1, R-2, R-3)	5 ft.	5 ft.
54	Setback (rear) (R-1, R-2, R-3)	5 ft.	5 ft.
55	Setback (side) (R-1, R-2, R-3)	5 ft.	5 ft.
56	Setback (front) (R-1, R-2, R-3)	5 ft.	5 ft.
57	Setback (side/rear) (R-1, R-2, R-3)	5 ft.	5 ft.
58	Setback (rear) (R-1, R-2, R-3)	5 ft.	5 ft.
59	Setback (side) (R-1, R-2, R-3)	5 ft.	5 ft.
60	Setback (front) (R-1, R-2, R-3)	5 ft.	5 ft.
61	Setback (side/rear) (R-1, R-2, R-3)	5 ft.	5 ft.
62	Setback (rear) (R-1, R-2, R-3)	5 ft.	5 ft.
63	Setback (side) (R-1, R-2, R-3)	5 ft.	5 ft.
64	Setback (front) (R-1, R-2, R-3)	5 ft.	5 ft.
65	Setback (side/rear) (R-1, R-2, R-3)	5 ft.	5 ft.
66	Setback (rear) (R-1, R-2, R-3)	5 ft.	5 ft.
67	Setback (side) (R-1, R-2, R-3)	5 ft.	5 ft.
68	Setback (front) (R-1, R-2, R-3)	5 ft.	5 ft.
69	Setback (side/rear) (R-1, R-2, R-3)	5 ft.	5 ft.
70	Setback (rear) (R-1, R-2, R-3)	5 ft.	5 ft.
71	Setback (side) (R-1, R-2, R-3)	5 ft.	5 ft.
72	Setback (front) (R-1, R-2, R-3)	5 ft.	5 ft.
73	Setback (side/rear) (R-1, R-2, R-3)	5 ft.	5 ft.
74	Setback (rear) (R-1, R-2, R-3)	5 ft.	5 ft.
75	Setback (side) (R-1, R-2, R-3)	5 ft.	5 ft.
76	Setback (front) (R-1, R-2, R-3)	5 ft.	5 ft.
77	Setback (side/rear) (R-1, R-2, R-3)	5 ft.	5 ft.
78	Setback (rear) (R-1, R-2, R-3)	5 ft.	5 ft.
79	Setback (side) (R-1, R-2, R-3)	5 ft.	5 ft.
80	Setback (front) (R-1, R-2, R-3)	5 ft.	5 ft.
81	Setback (side/rear) (R-1, R-2, R-3)	5 ft.	5 ft.
82	Setback (rear) (R-1, R-2, R-3)	5 ft.	5 ft.
83	Setback (side) (R-1, R-2, R-3)	5 ft.	5 ft.
84	Setback (front) (R-1, R-2, R-3)	5 ft.	5 ft.
85	Setback (side/rear) (R-1, R-2, R-3)	5 ft.	5 ft.
86	Setback (rear) (R-1, R-2, R-3)	5 ft.	5 ft.
87	Setback (side) (R-1, R-2, R-3)	5 ft.	5 ft.
88	Setback (front) (R-1, R-2, R-3)	5 ft.	5 ft.
89	Setback (side/rear) (R-1, R-2, R-3)	5 ft.	5 ft.
90	Setback (rear) (R-1, R-2, R-3)	5 ft.	5 ft.
91	Setback (side) (R-1, R-2, R-3)	5 ft.	5 ft.
92	Setback (front) (R-1, R-2, R-3)	5 ft.	5 ft.
93	Setback (side/rear) (R-1, R-2, R-3)	5 ft.	5 ft.
94	Setback (rear) (R-1, R-2, R-3)	5 ft.	5 ft.
95	Setback (side) (R-1, R-2, R-3)	5 ft.	5 ft.
96	Setback (front) (R-1, R-2, R-3)	5 ft.	5 ft.
97	Setback (side/rear) (R-1, R-2, R-3)	5 ft.	5 ft.
98	Setback (rear) (R-1, R-2, R-3)	5 ft.	5 ft.
99	Setback (side) (R-1, R-2, R-3)	5 ft.	5 ft.
100	Setback (front) (R-1, R-2, R-3)	5 ft.	5 ft.

STAGING SEQUENCE OF DEVELOPMENT PROGRAM

The entire project



HULL PROPERTY
PAGE 1 OF 1

PRELIMINARY PLAN
SCALE: 1" = 50'

OWNER:
GREENHORN & O'NEAL, INC.
2410 COUNTRY BOULEVARD, SUITE 200, GERMANTOWN, MARYLAND 20874
PHONE: (301) 444-4781

DESIGNER:
GREENHORN & O'NEAL, INC.
2410 COUNTRY BOULEVARD, SUITE 200, GERMANTOWN, MARYLAND 20874
PHONE: (301) 444-4781

DATE: 10/20/20

BY: JK

SCALE: 1" = 50'

PROJECT NO.: 1007984.0709401.PRE

DATE: 2/27/2005