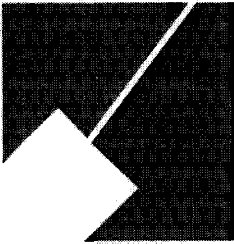


Item # 5

M-NCPPC



MONTGOMERY COUNTY DEPARTMENT OF PARK AND PLANNING

THE MARYLAND-NATIONAL CAPITAL
PARK AND PLANNING COMMISSION

8787 Georgia Avenue
Silver Spring, Maryland 20910-3760
301-495-4500, www.mncppc.org

M E M O R A N D U M

DATE: February 11, 2005
TO: Montgomery County Planning Board
FROM: Catherine Conlon
Development Review Division
(301) 495-4542
SUBJECT: Informational Maps for Subdivision Items on the
Planning Board's Agenda for February 17, 2005.

Attached are copies of plan drawings for item #02, #03, #04, #05, #06, and #08. These subdivision items are scheduled for Planning Board consideration on February 17, 2005. The items are further identified as follows:

Agenda Item #02 - Preliminary Plan 1-05040
Hull Property

Agenda Item #03 - Preliminary Plan 1-87040A
Mother of God

Agenda Item #04 - Preliminary Plan 1-05005
Macon Construction

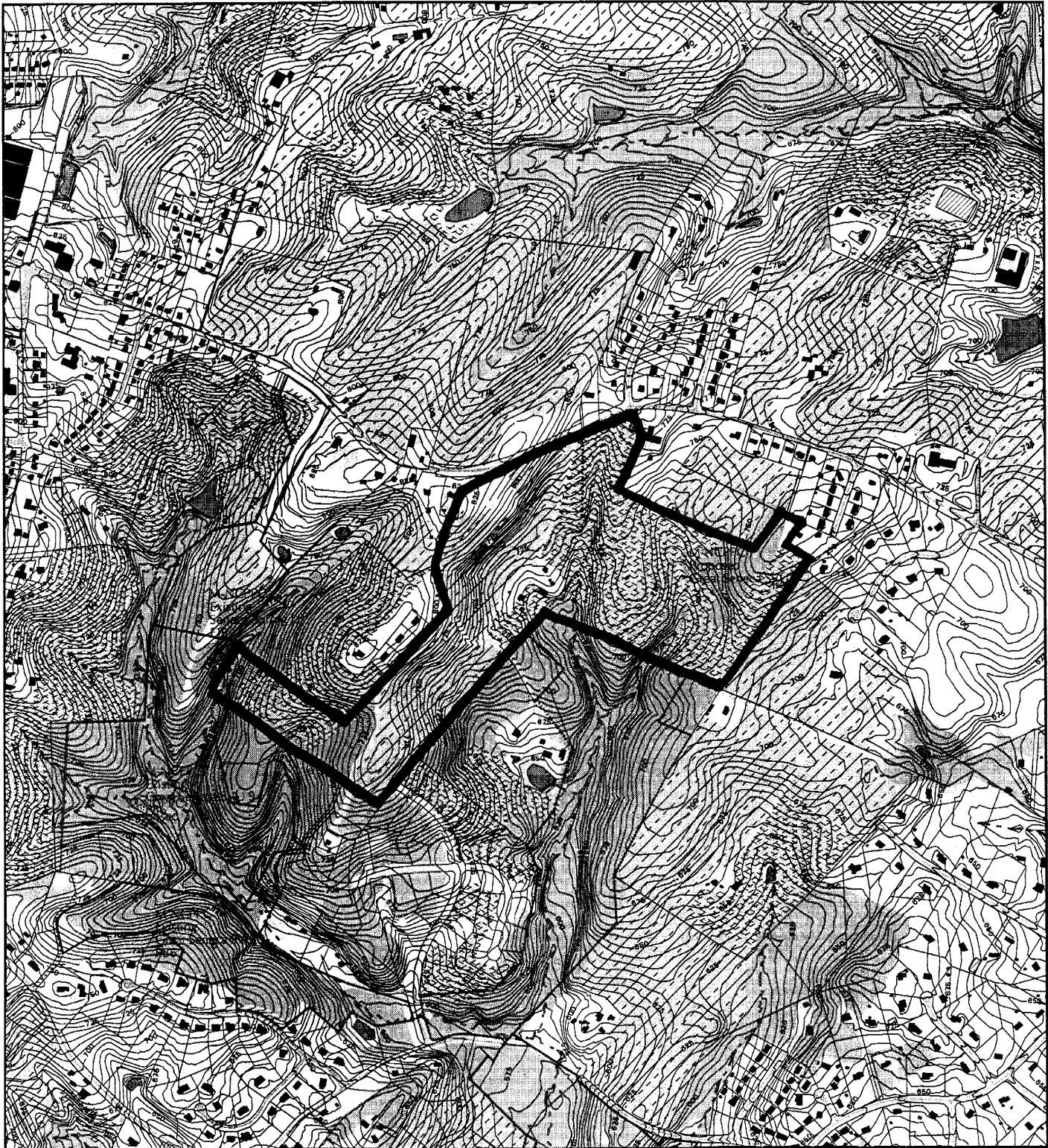
Agenda Item #05 - Preliminary Plan 1-04080
Damascus Hills

Agenda Item #06 - Preliminary Plan 1-05024
Tong Property

Agenda Item #08 - Pre-Preliminary Plan 1-05011
Offutt Estates

Attachment

DAMASCUS HILLS (1-04080)



Map compiled on February 11, 2005 at 10:56 AM | Site located on base sheet no - 236NW09

NOTICE

The planimetric, property, and topographic information shown on this map is based on copyrighted Map Products from the Montgomery County Department of Park and Planning of the Maryland-National Capital Park and Planning Commission, and may not be copied or reproduced without written permission from M-NCPPC.

Property lines are compiled by adjusting the property lines to topography created from aerial photography and should not be interpreted as actual field surveys. Planimetric features were compiled from 1:14400 scale aerial photography using stereo photogrammetric methods.

This map is created from a variety of data sources, and may not reflect the most current conditions in any one location and may not be completely accurate or up to date. All map features are approximately within five feet of their true location. This map may not be the same as a map of the same area plotted at an earlier time as the data is continuously updated. Use of this map, other than for general planning purposes is not recommended. - Copyright 1998

Key Map

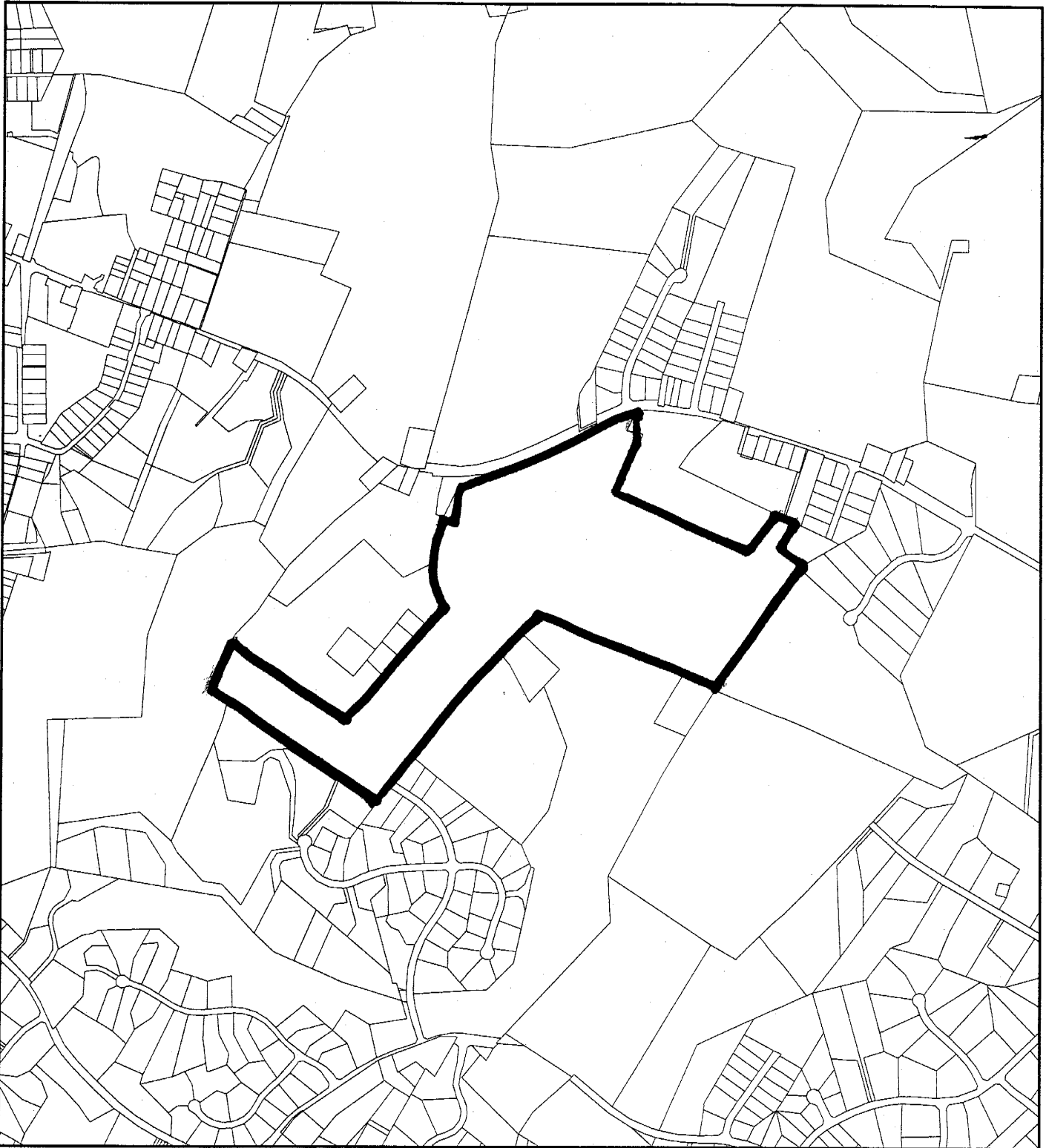


Research & Technology Center



1 inch = 1200 feet
1 : 14400

DAMASCUS HILLS (1-04080)



Map compiled on February 11, 2005 at 10:18 AM | Site located on base sheet no - 236NW09

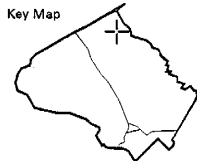
NOTICE

The planimetric, property, and topographic information shown on this map is based on copyrighted Map Products from the Montgomery County Department of Park and Planning of the Maryland -National Capital Park and Planning Commission, and may not be copied or reproduced without written permission from M-NCPPC.

Property lines are compiled by adjusting the property lines to topography created from aerial photography and should not be interpreted as actual field surveys. Planimetric features were compiled from 1:14400 scale aerial photography using stereo photogrammetric methods.

This map is created from a variety of data sources, and may not reflect the most current conditions in any one location and may not be completely accurate or up to date. All map features are approximately within five feet of their true location. This map may not be the same as a map of the same area plotted at an earlier time as the data is continuously updated. Use of this map, other than for general planning purposes is not recommended. - Copyright 1998

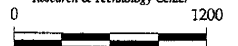
Key Map



N



Research & Technology Center



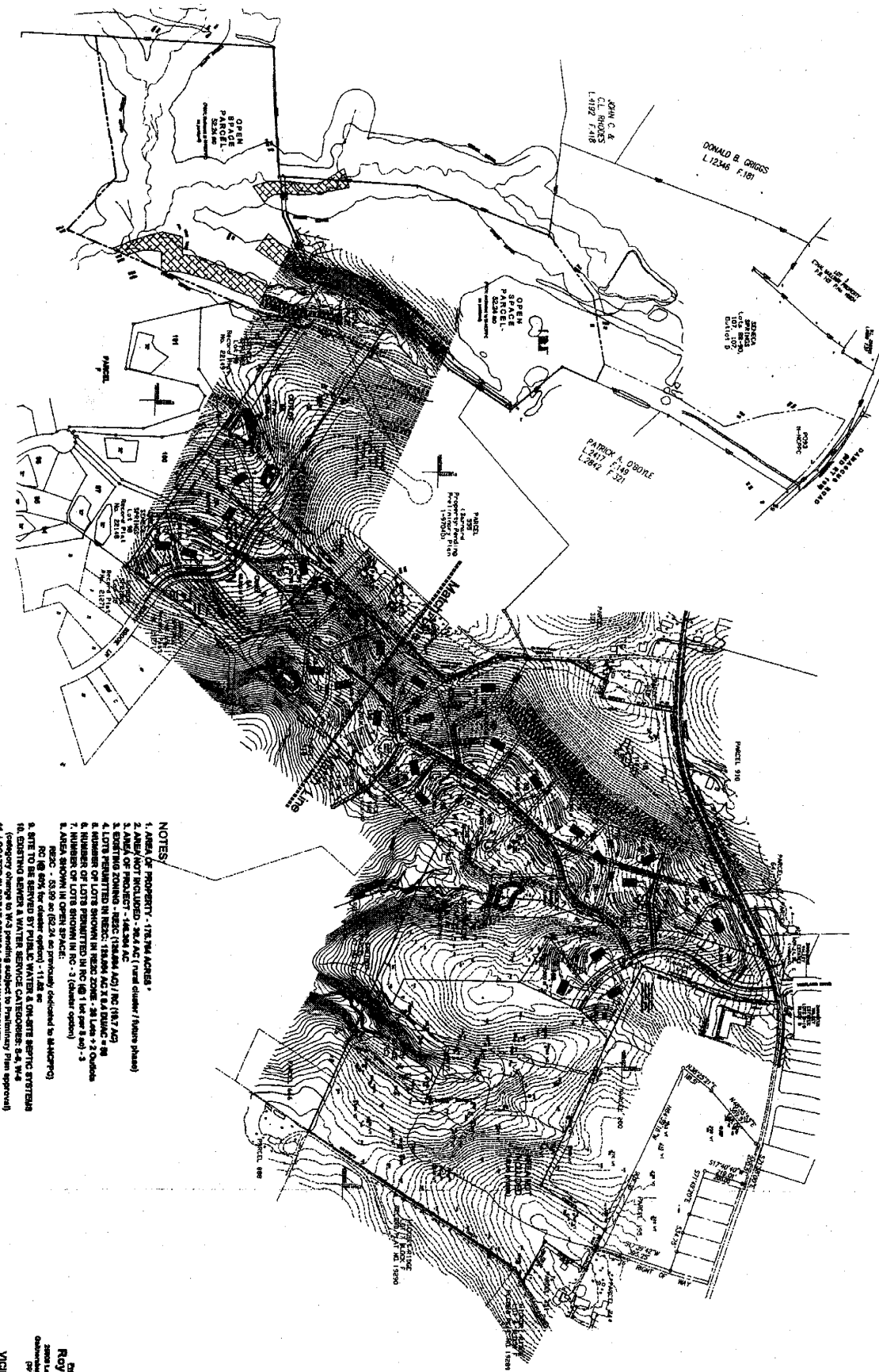
1 inch = 1200 feet
1 : 14400

MONTGOMERY COUNTY DEPARTMENT OF PARK AND PLANNING
THE MARYLAND-NATIONAL CAPITAL PARK AND PLANNING COMMISSION

8787 Georgia Avenue - Silver Spring, Maryland 20910-3760

M-NCPPC

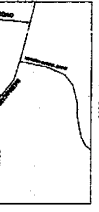
Professional Seal
 Roy Slattery
 Licensed Professional Engineer
 No. 12345
 State of Maryland
 Date: 04/12/2004



NOTES

1. AREA OF PROPERTY - 178.764 ACRES
2. AREA NOT INCLUDED - 18.7 AC (road easement / future phase)
3. AREA OF PROJECT - 148,204 AC
4. EXISTING BUILDINGS - RELOC (15,000 SQ FT) / INC (18,7 AC)
5. EXISTING UTILITIES IN RELOC - 15,000 AC X 1.54 INCHES = 23
6. NUMBER OF LOTS SHOWN IN RELOC ZONE - 26 LOTS + 2 OUTLETS
7. NUMBER OF LOTS SHOWN IN RELOC ZONE - 26 LOTS + 2 OUTLETS
8. AREA SHOWN IN OPEN SPACE - 17 (26,000 SQ FT)
9. AREA SHOWN IN OPEN SPACE - 17 (26,000 SQ FT)
10. SITE TO BE SERVED BY PUBLIC WATER & ON-SITE SEPTIC SYSTEMS
11. LOCATION IN GREAT SMOKY MOUNTAIN NATIONAL MONUMENT
12. DEVELOPMENT STANDARDS (RELOC)
13. DEVELOPMENT STANDARDS (RELOC)
14. UTILITIES TO BE PROVIDED BY Washington Gas, Verizon, Potomac Edison

15. AREA OF PROJECT - 148,204 AC
16. UTILITIES TO BE PROVIDED BY Washington Gas, Verizon, Potomac Edison
17. PROPERTY DETAILS OF P133 (124,524 sq) and P101 (23,24 sq)



ROY SLATTERY
 ENGINEER
 1012 E. CHERRY STREET
 OROVILLE, MARYLAND 21550
 (301) 284-6777

**PRELIMINARY PLAN
 DAMASCUS HILLS
 Montgomery County, Maryland**

B&A Banning & Associates, Inc.
 Lead Planning Consultants
 8715 Sandy Spring Court
 Odonton, MD 21087
 410-326-4242

date: APRIL 12, 2004
 scale: 1" = 200'



Sheet 1 of 3
