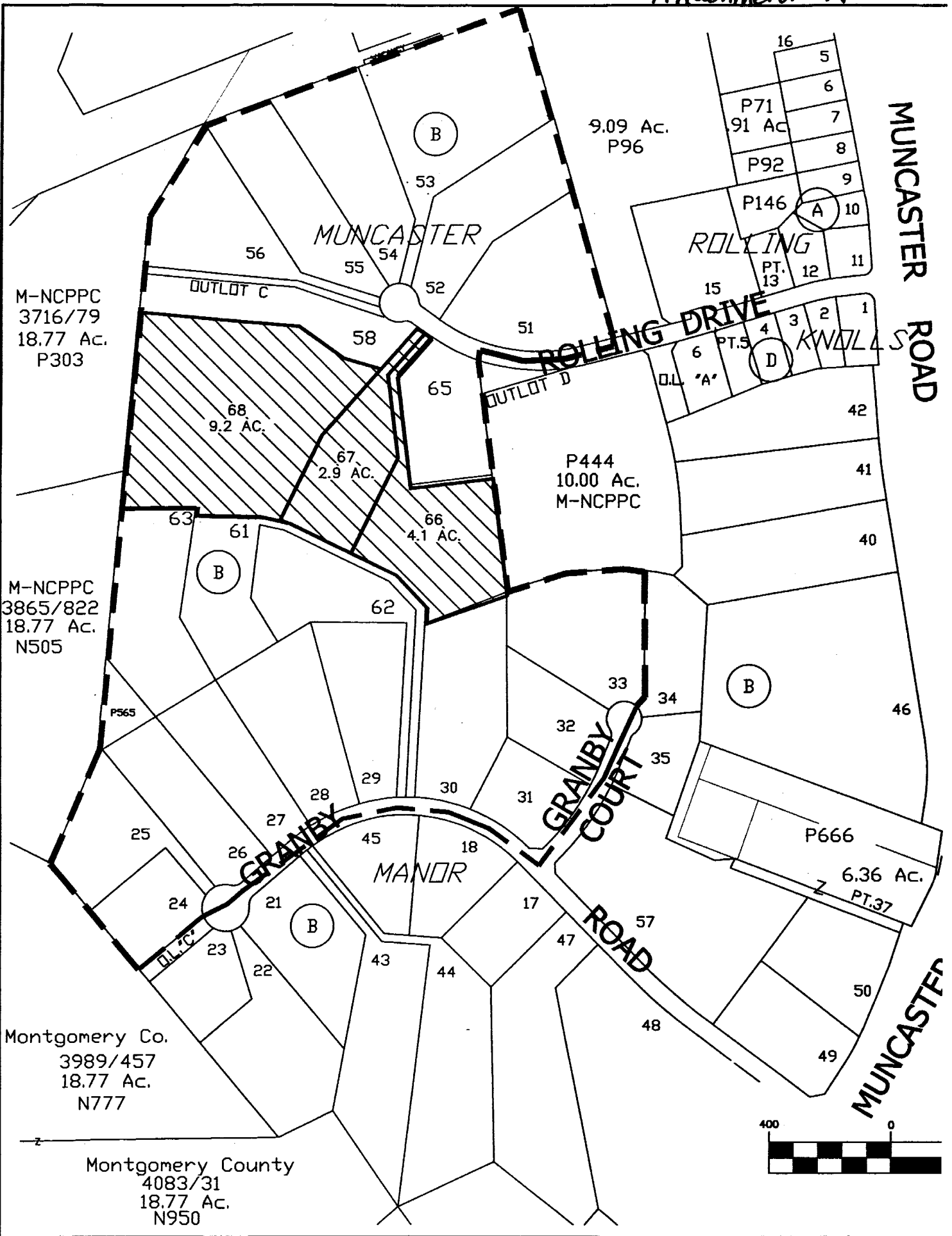


Attachment A



MUNCASTER ROAD

ROLLING DRIVE

GRANBY COURT

GRANBY ROAD

MUNCASTER

MUNCASTER

ROLLING

MANOR

M-NCPPC
3716/79
18.77 Ac.
P303

M-NCPPC
3865/822
18.77 Ac.
N505

Montgomery Co.
3989/457
18.77 Ac.
N777

Montgomery County
4083/31
18.77 Ac.
N950

9.09 Ac.
P96

P444
10.00 Ac.
M-NCPPC

P666
6.36 Ac.
PT.37



MUNCASTER MANOR (7-05013)

Attachment B



Map compiled on January 07, 2005 at 2:12 PM | Site located on base sheet no - 226NW06

NOTICE

The planimetric, property, and topographic information shown on this map is based on copyrighted Map Products from the Montgomery County Department of Park and Planning of the Maryland -National Capital Park and Planning Commission, and may not be copied or reproduced without written permission from M-NCPPC.

Property lines are compiled by adjusting the property lines to topography created from aerial photography and should not be interpreted as actual field surveys. Planimetric features were compiled from 1:14400 scale aerial photography using stereo photogrammetric methods.

This map is created from a variety of data sources, and may not reflect the most current conditions in any one location and may not be completely accurate or up to date. All map features are approximately within five feet of their true location. This map may not be the same as a map of the same area plotted at an earlier time as the data is continuously updated. Use of this map, other than for general planning purposes is not recommended. - Copyright 1998

Key Map



N



Research & Technology Center



1 inch = 600 feet
1:7200

MONTGOMERY COUNTY DEPARTMENT OF PARK AND PLANNING
 THE MARYLAND-NATIONAL CAPITAL PARK AND PLANNING COMMISSION

8787 Georgia Avenue - Silver Spring, Maryland 20910-3760

Attachment C

MUNCASTER MANOR RESUBDIVISION							
Lot	Block	Frontage	Alignment	Size	Shape	Width	Area
31	B	536.00	PERPENDICULAR	78,408	SQUARE	530	43,560
63	B	0.00	N/A	161,172	IRREGULAR	125	117,612
65	B	172.50	PERPENDICULAR	113,256	IRREGULAR	180	82,764
51	B	609.00	PERPENDICULAR	180,774	IRREGULAR	600	130,680
61	B	30.00	PERPENDICULAR	148,104	PIPESTEM	125	78,408
27	B	155.00	PERPENDICULAR	108,900	RECTANGULAR	160	82,764
26	B	220.00	PERPENDICULAR	121,968	RECTANGULAR	220	87,120
32	B	262.00	PERPENDICULAR	95,832	RECTANGULAR	265	60,984
58	B	116.27	PERPENDICULAR	116,741	IRREGULAR	150	82,764
52	B	145.00	PERPENDICULAR	144,184	IRREGULAR	160	108,900
33	B	110.00	PERPENDICULAR	161,172	IRREGULAR	170	121,968
30	B	188.00	PERPENDICULAR	161,172	IRREGULAR	190	126,324
25	B	40.00	PERPENDICULAR	113,256	PIPESTEM	125	82,764
56	B	25.00	PERPENDICULAR	143,312	PIPESTEM	125	95,832
53	B	40.00	PERPENDICULAR	259,182	PIPESTEM	125	196,020
54	B	29.60	PERPENDICULAR	153,331	RECTANGULAR	66	117,612
55	B	40.00	PERPENDICULAR	144,184	RECTANGULAR	77	108,900
24	B	75.00	PERPENDICULAR	78,408	RECTANGULAR	125	52,272
29	B	138.50	PERPENDICULAR	130,680	RECTANGULAR	140	95,832
28	B	160.00	PERPENDICULAR	148,104	RECTANGULAR	165	121,968
Proposed Lots							
66	B	30	PERPENDICULAR	178,596	PIPESTEM	150	82,764
67	B	30	PERPENDICULAR	126,324	PIPESTEM	125	78,408
68	B	0	N/A	400,752	SQUARE	175	317,988