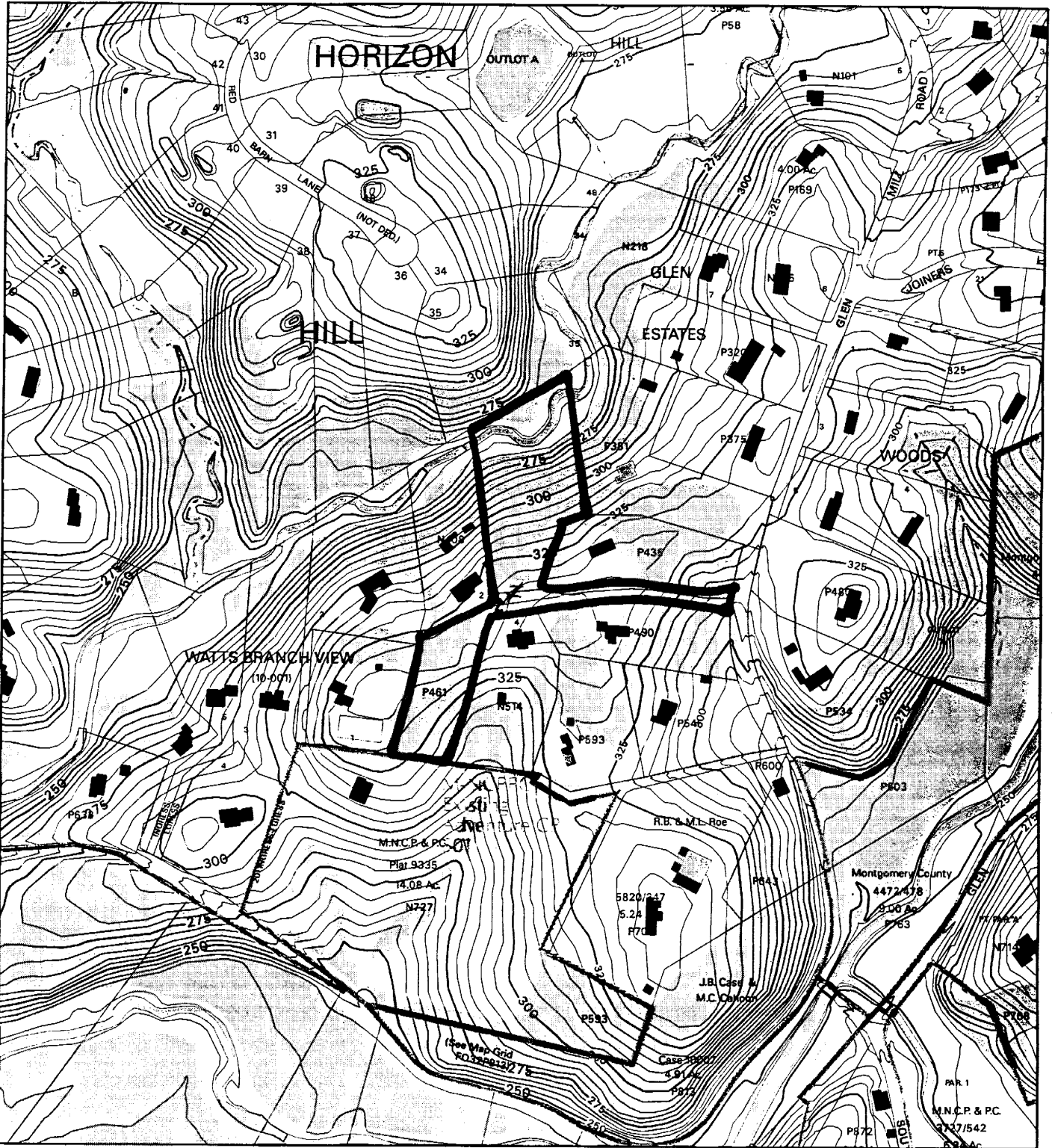


GLEN ESTATES (1-05048)



Map compiled on November 03, 2004 at 10:36 AM | Site located on base sheet no - 215NW10

NOTICE

The planimetric, property, and topographic information shown on this map is based on copyrighted Map Products from the Montgomery County Department of Park and Planning of the Maryland - National Capital Park and Planning Commission, and may not be copied or reproduced without written permission from M-NCPPC.

Property lines are compiled by adjusting the property lines to topography created from aerial photography and should not be interpreted as actual field surveys. Planimetric features were compiled from 1:14400 scale aerial photography using stereo photogrammetric methods.

This map is created from a variety of data sources, and may not reflect the most current conditions in any one location and may not be completely accurate or up to date. All map features are approximately within five feet of their true location. This map may not be the same as a map of the same area plotted at an earlier time as the data is continuously updated. Use of this map, other than for general planning purposes is not recommended. - Copyright 1998

Key Map



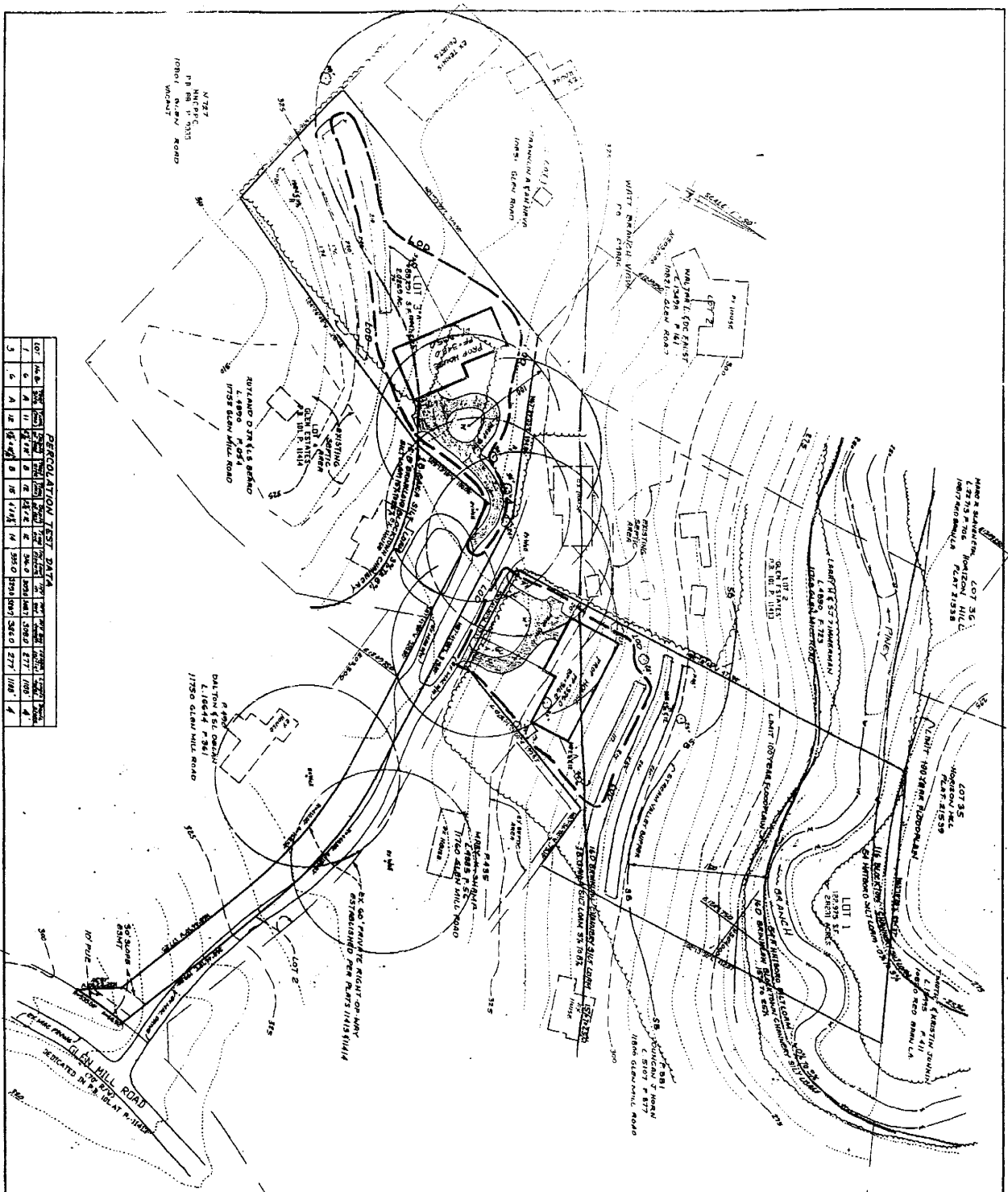
N



Research & Technology Center



1 inch = 400 feet
1 : 4800



GENERAL NOTES

NO.	DESCRIPTION
1	THIS PLAN IS A PRELIMINARY PLAN AND IS NOT TO BE USED FOR CONSTRUCTION.
2	ALL DIMENSIONS ARE IN FEET AND INCHES.
3	ALL SETBACKS ARE TO BE MAINTAINED.
4	ALL UTILITIES ARE TO BE DEEPENED AND RECONSTRUCTED TO MEET THE REQUIREMENTS OF THE CITY OF ROCKVILLE.
5	ALL EASEMENTS ARE TO BE MAINTAINED.
6	ALL EASEMENTS ARE TO BE MAINTAINED.
7	ALL EASEMENTS ARE TO BE MAINTAINED.
8	ALL EASEMENTS ARE TO BE MAINTAINED.
9	ALL EASEMENTS ARE TO BE MAINTAINED.
10	ALL EASEMENTS ARE TO BE MAINTAINED.
11	ALL EASEMENTS ARE TO BE MAINTAINED.
12	ALL EASEMENTS ARE TO BE MAINTAINED.
13	ALL EASEMENTS ARE TO BE MAINTAINED.
14	ALL EASEMENTS ARE TO BE MAINTAINED.
15	ALL EASEMENTS ARE TO BE MAINTAINED.
16	ALL EASEMENTS ARE TO BE MAINTAINED.
17	ALL EASEMENTS ARE TO BE MAINTAINED.
18	ALL EASEMENTS ARE TO BE MAINTAINED.
19	ALL EASEMENTS ARE TO BE MAINTAINED.
20	ALL EASEMENTS ARE TO BE MAINTAINED.
21	ALL EASEMENTS ARE TO BE MAINTAINED.
22	ALL EASEMENTS ARE TO BE MAINTAINED.
23	ALL EASEMENTS ARE TO BE MAINTAINED.
24	ALL EASEMENTS ARE TO BE MAINTAINED.
25	ALL EASEMENTS ARE TO BE MAINTAINED.
26	ALL EASEMENTS ARE TO BE MAINTAINED.
27	ALL EASEMENTS ARE TO BE MAINTAINED.
28	ALL EASEMENTS ARE TO BE MAINTAINED.
29	ALL EASEMENTS ARE TO BE MAINTAINED.
30	ALL EASEMENTS ARE TO BE MAINTAINED.

GENERAL NOTES

1. This Area - 4.87 Acres
2. Building Zoning - R12
3. Boundary survey prepared by Greco Associates dated July 2004
4. Boundary survey prepared by Greco Associates dated July 2004
5. Boundary survey prepared by Greco Associates dated July 2004
6. Boundary survey prepared by Greco Associates dated July 2004
7. Boundary survey prepared by Greco Associates dated July 2004
8. Boundary survey prepared by Greco Associates dated July 2004
9. Boundary survey prepared by Greco Associates dated July 2004
10. Boundary survey prepared by Greco Associates dated July 2004
11. Boundary survey prepared by Greco Associates dated July 2004
12. Boundary survey prepared by Greco Associates dated July 2004
13. Boundary survey prepared by Greco Associates dated July 2004
14. Boundary survey prepared by Greco Associates dated July 2004
15. Boundary survey prepared by Greco Associates dated July 2004
16. Boundary survey prepared by Greco Associates dated July 2004
17. Boundary survey prepared by Greco Associates dated July 2004
18. Boundary survey prepared by Greco Associates dated July 2004
19. Boundary survey prepared by Greco Associates dated July 2004
20. Boundary survey prepared by Greco Associates dated July 2004
21. Boundary survey prepared by Greco Associates dated July 2004
22. Boundary survey prepared by Greco Associates dated July 2004
23. Boundary survey prepared by Greco Associates dated July 2004
24. Boundary survey prepared by Greco Associates dated July 2004
25. Boundary survey prepared by Greco Associates dated July 2004
26. Boundary survey prepared by Greco Associates dated July 2004
27. Boundary survey prepared by Greco Associates dated July 2004
28. Boundary survey prepared by Greco Associates dated July 2004
29. Boundary survey prepared by Greco Associates dated July 2004
30. Boundary survey prepared by Greco Associates dated July 2004

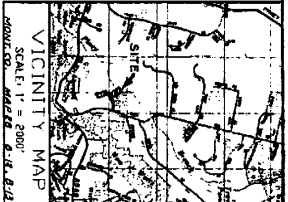
ENGINEER'S CERTIFICATE

I HEREBY CERTIFY THAT THE INFORMATION CONTAINED HEREIN IS TRUE AND CORRECT TO THE BEST OF MY KNOWLEDGE AND BELIEF AND THAT I AM A LICENSED PROFESSIONAL ENGINEER IN THE STATE OF MARYLAND.

David R. [Signature]
 David R. [Name]
 License No. [Number]

SITE DATA

LOT 1 AREA: 4.87 ACRES
 LOT 3 AREA: 4.87 ACRES
 TOTAL AREA: 9.74 ACRES
 ZONING: R12
 SETBACKS: 10 FT. FRONT, 5 FT. SIDE, 5 FT. REAR
 UTILITIES: WATER, SEWER, GAS, ELECTRIC, TELEPHONE



PRELIMINARY PLAN
 PROPOSED LOTS 1 AND 3
GLEN ESTATES
 RECORDED IN LIBER 3171 AT FOLIO 148
 POTOMAC ELECTION DISTRICT No. 10 MONTGOMERY COUNTY MARYLAND

P.G. ASSOCIATES, INC.
 CIVIL ENGINEERS * SURVEYORS * LAND PLANNERS
 932 HUNGERFORD DRIVE, SUITE 4B
 ROCKVILLE, MARYLAND 20850
 PHONE (301) 309-1261