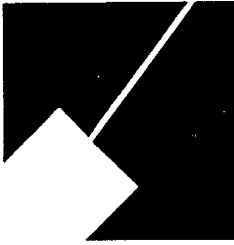


M-NCPPC



MONTGOMERY COUNTY DEPARTMENT OF PARK AND PLANNING

THE MARYLAND-NATIONAL CAPITAL
PARK AND PLANNING COMMISSION

8787 Georgia Avenue
Silver Spring, Maryland 20910-3760
301-495-4500, www.mncppc.org

M E M O R A N D U M

DATE: February 18, 2005
TO: Montgomery County Planning Board
FROM: Catherine Conlon
Development Review Division
(301) 495-4542
SUBJECT: Informational Maps for Subdivision Items on the
Planning Board's Agenda for February 24, 2005.

Attached are copies of plan drawings for item #11, #12, #13, #14, and #15. These subdivision items are scheduled for Planning Board consideration on February 24, 2005. The items are further identified as follows:

Agenda Item #11 - Preliminary Plan 1-01067E
East Hampshire Center

Agenda Item #12 - Preliminary Plan 7-05013
Muncaster Manor (Resubdivision)

Agenda Item #13 - Preliminary Plan 1-05048
Glen Estates

Agenda Item #14 - Preliminary Plan 1-04097A
Alpine Forest

Agenda Item #15 - Preliminary Plan 1-05049
Mount Zion

Attachment

GLEN ESTATES (1-05048)



Map compiled on November 03, 2004 at 10:36 AM | Site located on base sheet no - 215NW10

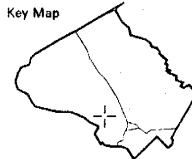
NOTICE

The planimetric, property, and topographic information shown on this map is based on copyrighted Map Products from the Montgomery County Department of Park and Planning of the Maryland-National Capital Park and Planning Commission, and may not be copied or reproduced without written permission from M-NCPPC.

Property lines are compiled by adjusting the property lines to topography created from aerial photography and should not be interpreted as actual field surveys. Planimetric features were compiled from 1:14400 scale aerial photography using stereo photogrammetric methods.

This map is created from a variety of data sources, and may not reflect the most current conditions in any one location and may not be completely accurate or up to date. All map features are approximately within five feet of their true location. This map may not be the same as a map of the same area plotted at an earlier time as the data is continuously updated. Use of this map, other than for general planning purposes is not recommended. - Copyright 1998

Key Map

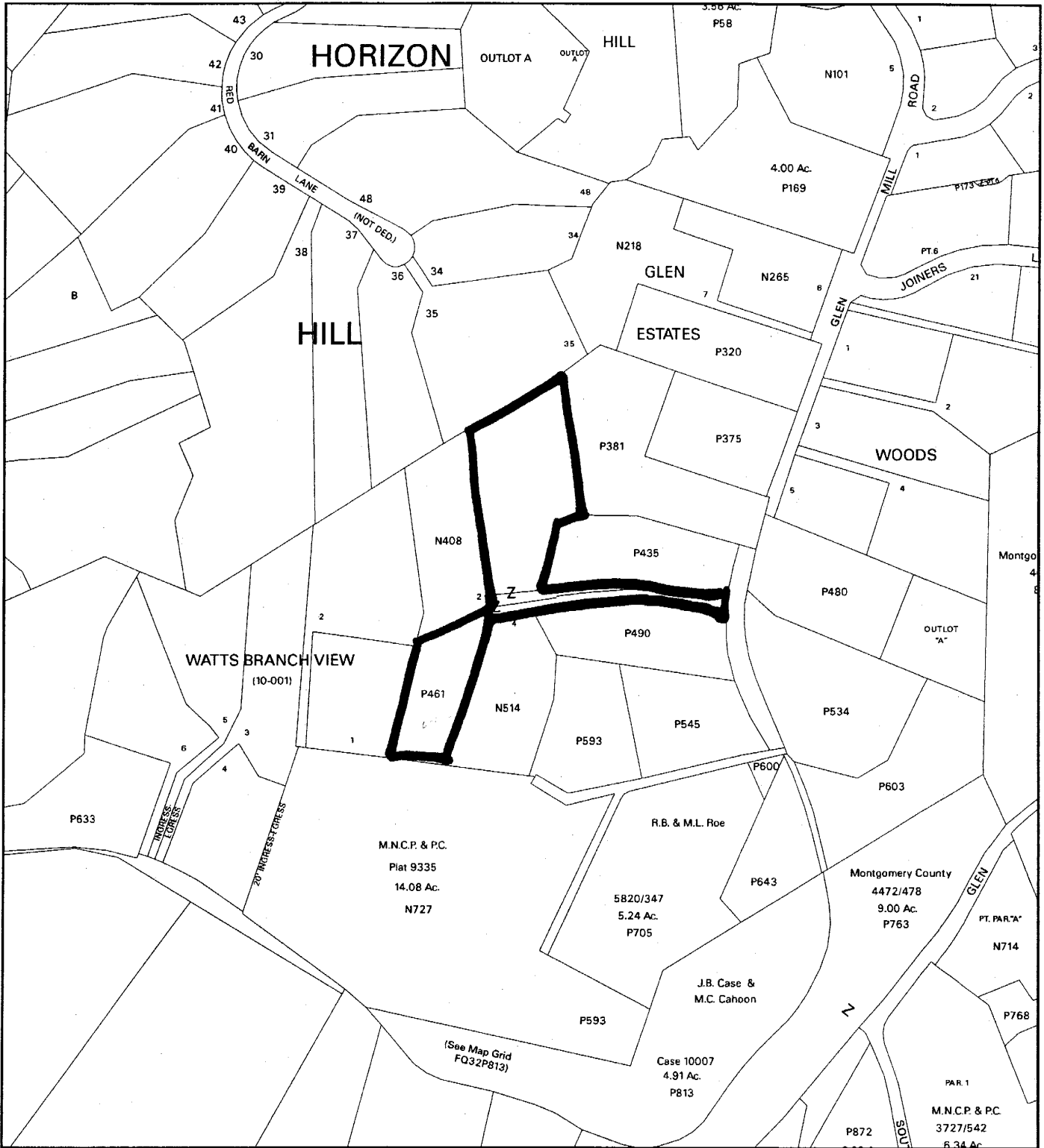


Research & Technology Center

0 400

1 inch = 400 feet
1 : 4800

GLEN ESTATES (1-05048)



Map compiled on November 03, 2004 at 10:40 AM | Site located on base sheet no - 215NW10

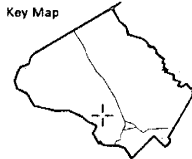
NOTICE

The planimetric, property, and topographic information shown on this map is based on copyrighted Map Products from the Montgomery County Department of Park and Planning of the Maryland-National Capital Park and Planning Commission, and may not be copied or reproduced without written permission from M-NCPPC.

Property lines are compiled by adjusting the property lines to topography created from aerial photography and should not be interpreted as actual field surveys. Planimetric features were compiled from 1:14400 scale aerial photography using stereo photogrammetric methods.

This map is created from a variety of data sources, and may not reflect the most current conditions in any one location and may not be completely accurate or up to date. All map features are approximately within five feet of their true location. This map may not be the same as a map of the same area plotted at an earlier time as the data is continuously updated. Use of this map, other than for general planning purposes is not recommended. - Copyright 1998

Key Map



N



Research & Technology Center

0 400

1 inch = 400 feet
1: 4800

M-NCPPC **MONTGOMERY COUNTY DEPARTMENT OF PARK AND PLANNING**
THE MARYLAND-NATIONAL CAPITAL PARK AND PLANNING COMMISSION

8787 Georgia Avenue - Silver Spring, Maryland 20910-3760

