

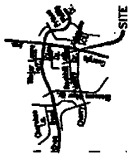
SOUTH ELEVATION



EAST ELEVATION

SCALE

Submission For Awards or Other Purposes	Delizeto Architects & Planners A Professional Corporation 12 South Adams Street, Baltimore, Maryland, 21202 Telephone: 801-821-8666	Winchester School 1750 Cherry Avenue Street, MD 21822 New Situations	A2 1/8"=1'-0"
--	--	--	------------------



VICINITY MAP  
SCALE 1" = 2,000'

LANDSCAPE PLANT LIST

PLANT	COMMON NAME	COL.	HT.	FR.	COOR.	NOTES
1	Large Tree	100'	100'	100'	100'	100'
2	Medium Tree	50'	50'	50'	50'	50'
3	Small Tree	25'	25'	25'	25'	25'
4	Shrub	10'	10'	10'	10'	10'
5	Flowering Shrub	10'	10'	10'	10'	10'
6	Groundcover	2'	2'	2'	2'	2'
7	Perennial	2'	2'	2'	2'	2'
8	Annual	2'	2'	2'	2'	2'
9	Grass	2'	2'	2'	2'	2'
10	Evergreen Tree	10'	10'	10'	10'	10'
11	Deciduous Tree	10'	10'	10'	10'	10'
12	Shrub	10'	10'	10'	10'	10'
13	Flowering Shrub	10'	10'	10'	10'	10'
14	Groundcover	2'	2'	2'	2'	2'
15	Perennial	2'	2'	2'	2'	2'
16	Annual	2'	2'	2'	2'	2'
17	Grass	2'	2'	2'	2'	2'
18	Evergreen Tree	10'	10'	10'	10'	10'
19	Deciduous Tree	10'	10'	10'	10'	10'
20	Shrub	10'	10'	10'	10'	10'
21	Flowering Shrub	10'	10'	10'	10'	10'
22	Groundcover	2'	2'	2'	2'	2'
23	Perennial	2'	2'	2'	2'	2'
24	Annual	2'	2'	2'	2'	2'
25	Grass	2'	2'	2'	2'	2'

- LEGEND
- Proposed Shade Tree
  - Proposed Evergreen Tree
  - Proposed Ornamental Tree
  - Proposed Shrubs & Grasses
  - Proposed Lights & Bollards (See Lighting Plan for Details)

SE-  
VSSD 22/10/02

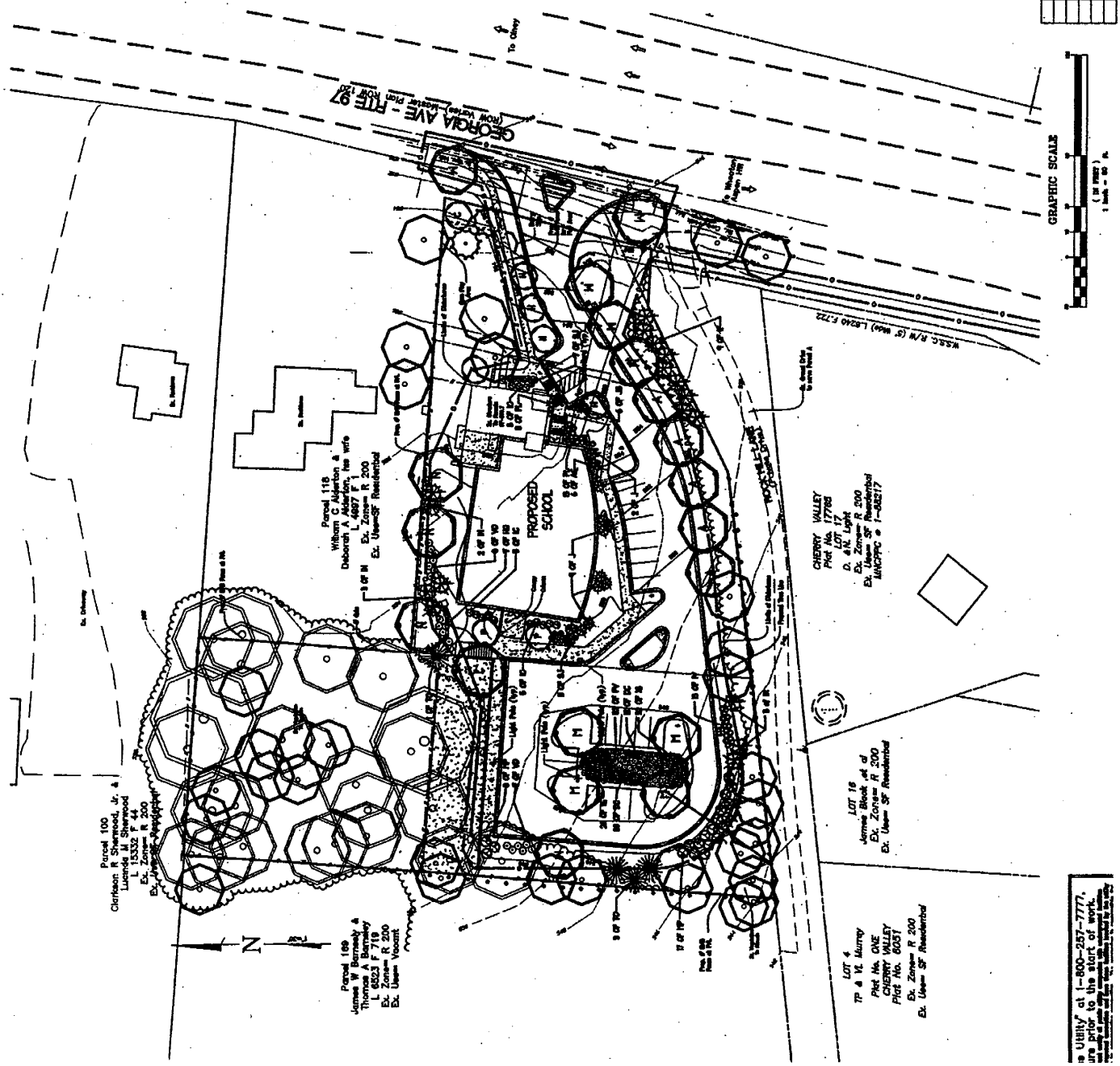
SPECIAL EXCEPTION  
LANDSCAPE PLAN  
**WINCHESTER SCHOOL**  
Parcels 171, 172 and 173  
8TH ELECTION DISTRICT - MONTGOMERY COUNTY - MARYLAND

Prepared For:  
Ms. Mary Rhim  
11455 South Glen Road  
Potomac, MD 20854  
Phone: (301) 289-5666  
Fax: (301) 200-0128

THE MAP HEREIN  
VSSD 22/10/02

MHG  
Montgomery Heritage & Greenbelt  
2222 Walden Road, Suite 100  
Bethesda, MD 20814  
Phone: (301) 289-5666  
Fax: (301) 200-0128

Proj. No. 10/10/02  
Date 10/10/02  
Scale 1" = 2000'  
Project No. 2002-0000



UTILITY at 1-800-257-3777  
are prior to the start of work.