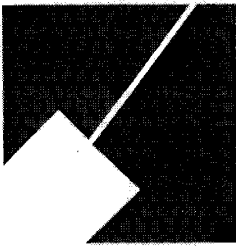


Item # 5

M-NCPPC



MONTGOMERY COUNTY DEPARTMENT OF PARK AND PLANNING

THE MARYLAND-NATIONAL CAPITAL
PARK AND PLANNING COMMISSION

8787 Georgia Avenue
Silver Spring, Maryland 20910-3760
301-495-4500, www.mncppc.org

M E M O R A N D U M

DATE: February 25, 2005
TO: Montgomery County Planning Board
FROM: Catherine Conlon
Development Review Division
(301) 495-4542
SUBJECT: Informational Maps for Subdivision Items on the
Planning Board's Agenda for March 03, 2005.

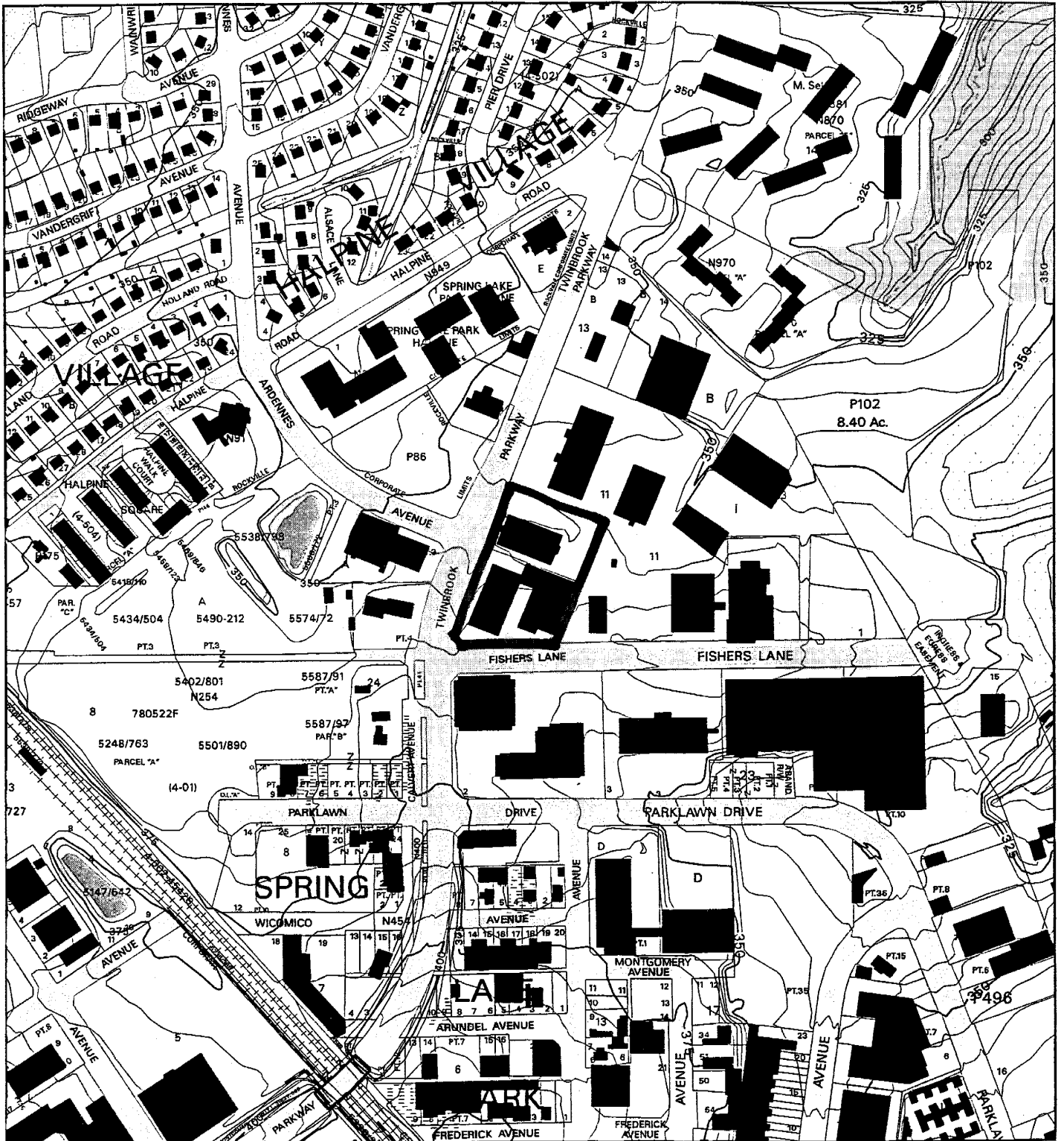
Attached are copies of plan drawings for item #05, and #08.
These subdivision items are scheduled for Planning Board
consideration on March 03, 2005. The items are further
identified as follows:

Agenda Item #05 - Preliminary Plan 1-05017
Spring Lake Halpine (U.S. Pharmecopia)

Agenda Item #08 - Preliminary Plan 1-04108
Indian Spring Property

Attachment

SPRING LAKE PARK HALPINE - LOT 15 (1-05017)



Map compiled on August 23, 2004 at 2:45 PM | Site located on base sheet no - 216NW06

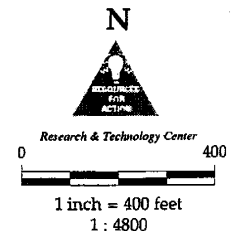
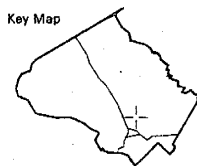
NOTICE

The planimetric, property, and topographic information shown on this map is based on copyrighted Map Products from the Montgomery County Department of Park and Planning of the Maryland - National Capital Park and Planning Commission, and may not be copied or reproduced without written permission from M-NCPPC.

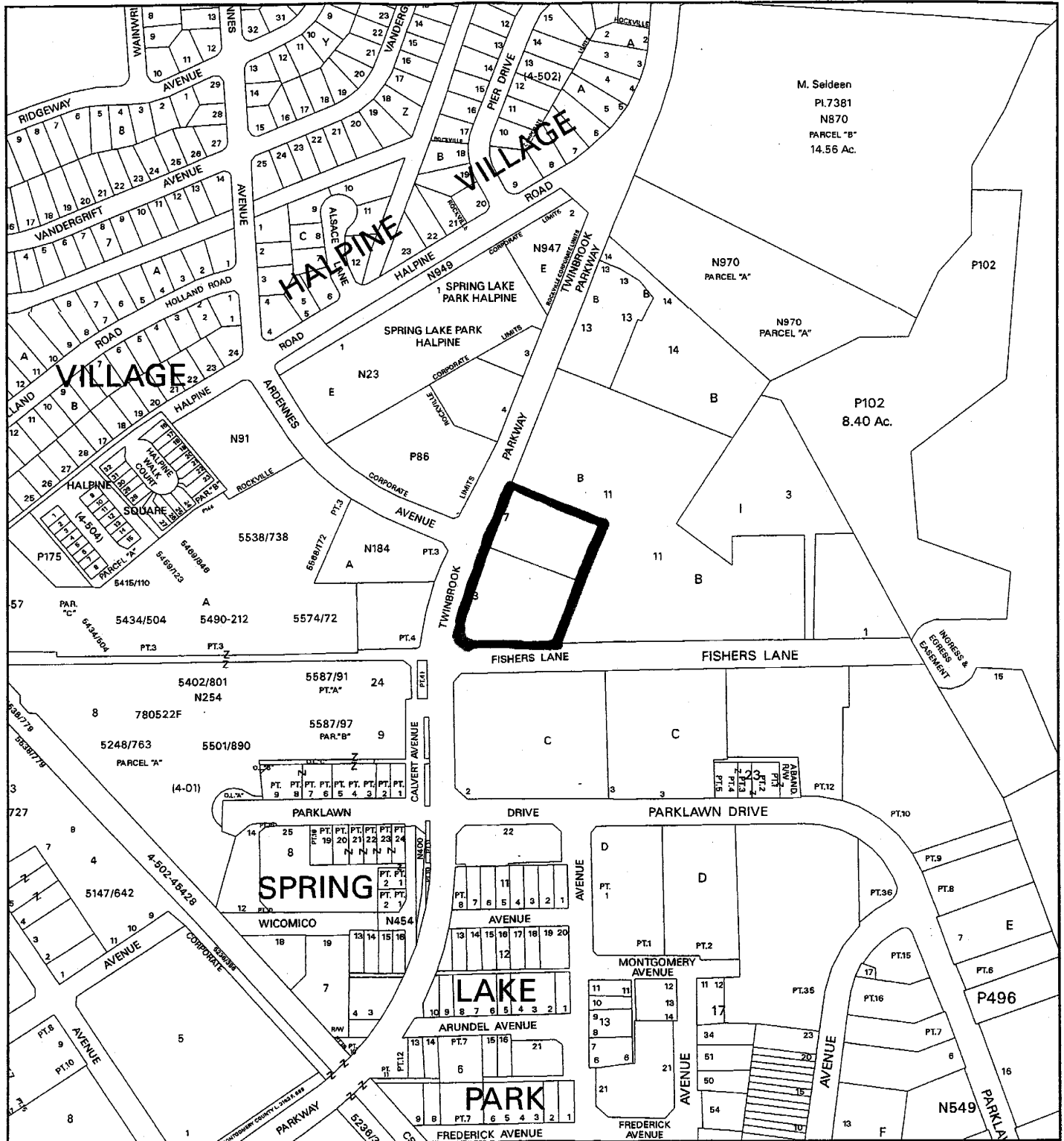
Property lines are compiled by adjusting the property lines to topography created from aerial photography and should not be interpreted as actual field surveys. Planimetric features were compiled from 1:14400 scale aerial photography using stereo photogrammetric methods.

This map is created from a variety of data sources, and may not reflect the most current conditions in any one location and may not be completely accurate or up to date. All map features are approximately within five feet of their true location. This map may not be the same as a map of the same area plotted at an earlier time as the data is continuously updated. Use of this map, other than for general planning purposes is not recommended. - Copyright 1998

Key Map



SPRING LAKE PARK HALPINE - LOT 15 (1-05017)



Map compiled on August 23, 2004 at 2:48 PM | Site located on base sheet no - 216NW06

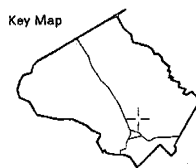
NOTICE

The planimetric, property, and topographic information shown on this map is based on copyrighted Map Products from the Montgomery County Department of Park and Planning of the Maryland - National Capital Park and Planning Commission, and may not be copied or reproduced without written permission from M-NCPPC.

Property lines are compiled by adjusting the property lines to topography created from aerial photography and should not be interpreted as actual field surveys. Planimetric features were compiled from 1:14400 scale aerial photography using stereo photogrammetric methods.

This map is created from a variety of data sources, and may not reflect the most current conditions in any one location and may not be completely accurate or up to date. All map features are approximately within five feet of their true location. This map may not be the same as a map of the same area plotted at an earlier time as the data is continuously updated. Use of this map, other than for general planning purposes is not recommended. - Copyright 1998

Key Map



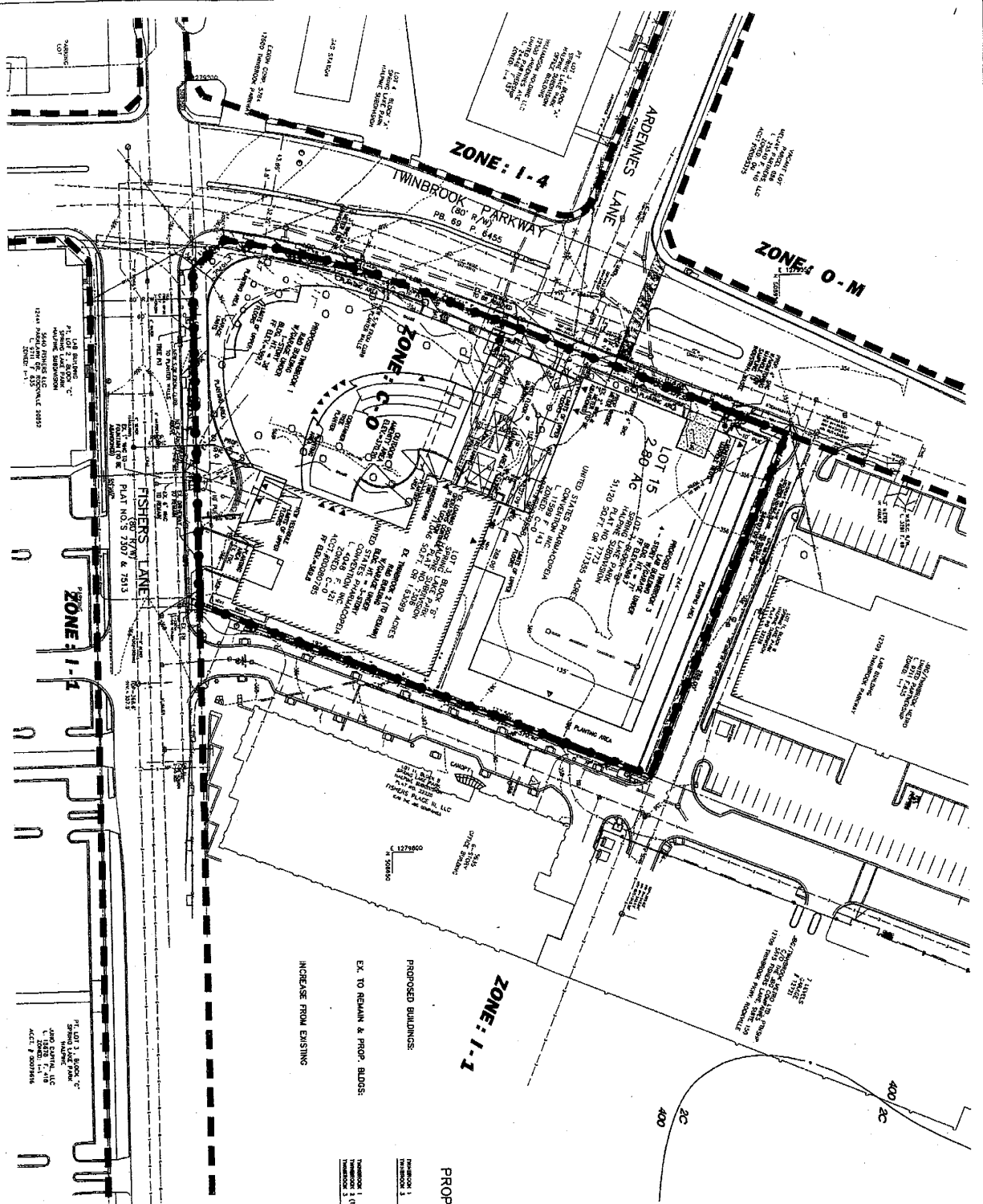
N



Research & Technology Center



1 inch = 400 feet
1 : 4800



SURVEY LEGEND

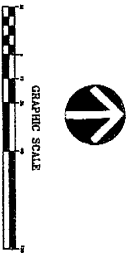
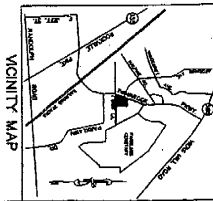
- ZONING LINE
- ZONE LABEL
- LIMITS OF PRELIMINARY PLAN
- LIMITS OF DISTURBANCE

LEGEND

- ZONING LINE
- ZONE LABEL
- LIMITS OF PRELIMINARY PLAN
- LIMITS OF DISTURBANCE

PROPOSED DEVELOPMENT

THUMBNOIL	RWD (SF)	LAB (SF)	LAB (SF)	TOTAL (SF)
THUMBNOIL 1	14,400	79,173	14,400	108,000
THUMBNOIL 2	14,400	79,173	14,400	108,000
THUMBNOIL 3 (TO REMAIN)	0	0	0	0
TOTAL	28,800	158,346	14,400	241,546



PRELIMINARY PLAN

VIA REVISIONS

NO.	DATE	DESCRIPTION

U. S. PHARMACOPEIA

SPRING LAKE PARK, HALPINE SUB. - LOT 15

WASHINGTON-ROCKVILLE INDUSTRIAL PARK

4TH ELECTION DISTRICT

MONTGOMERY COUNTY, MARYLAND

VIVA

ENGINEERS & PLANNERS LANDSCAPE ARCHITECTS & SURVEYORS & GPS SERVICES

VIVA INCORPORATED
2020 CENTURY BOLLING ROAD SUITE 400 BETHESDA, MARYLAND 20814
(301) 281-4000 FAX (301) 281-2822
GERMANTOWN, MD | HIGLEYS, VA | LEESBURG, VA