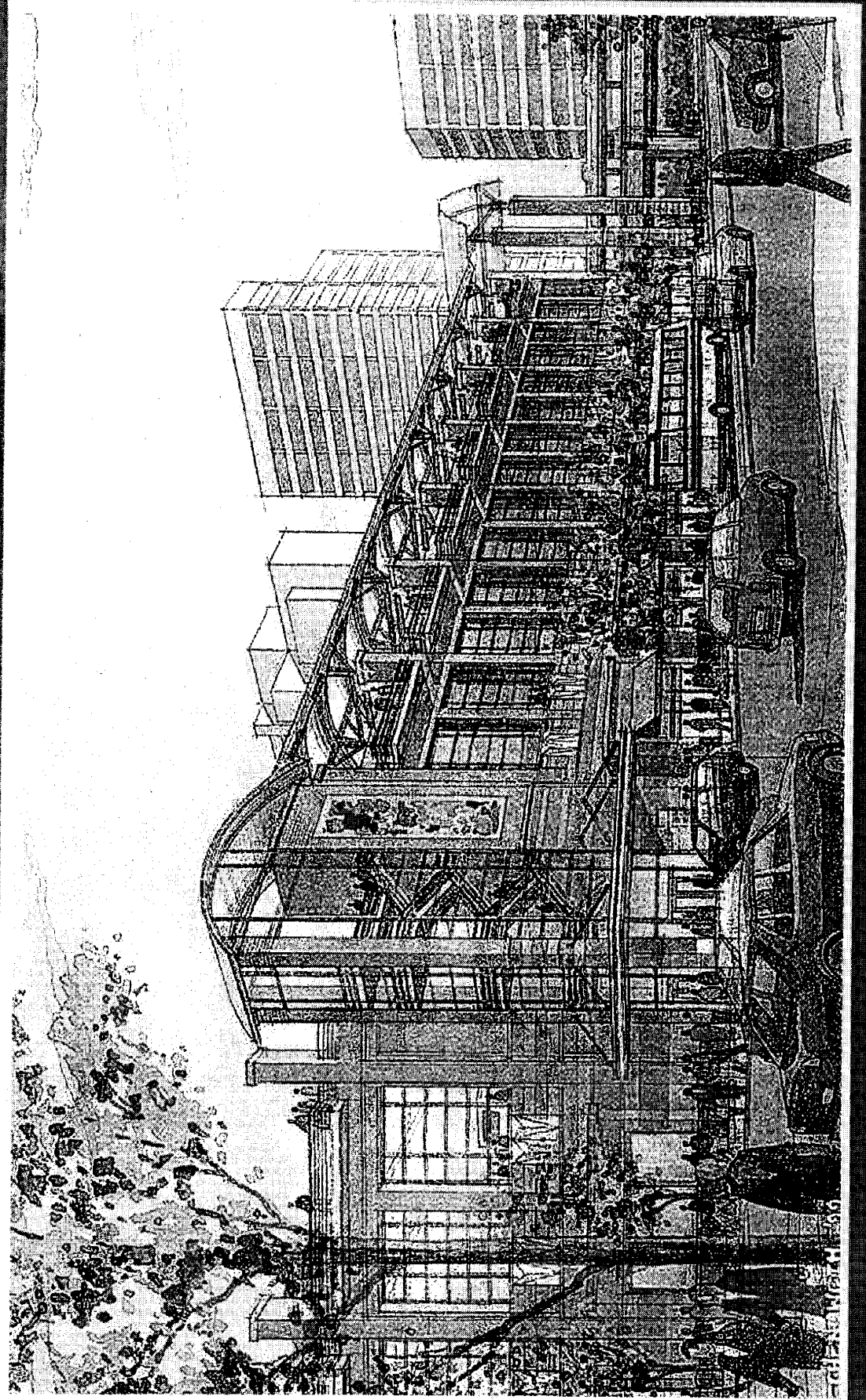
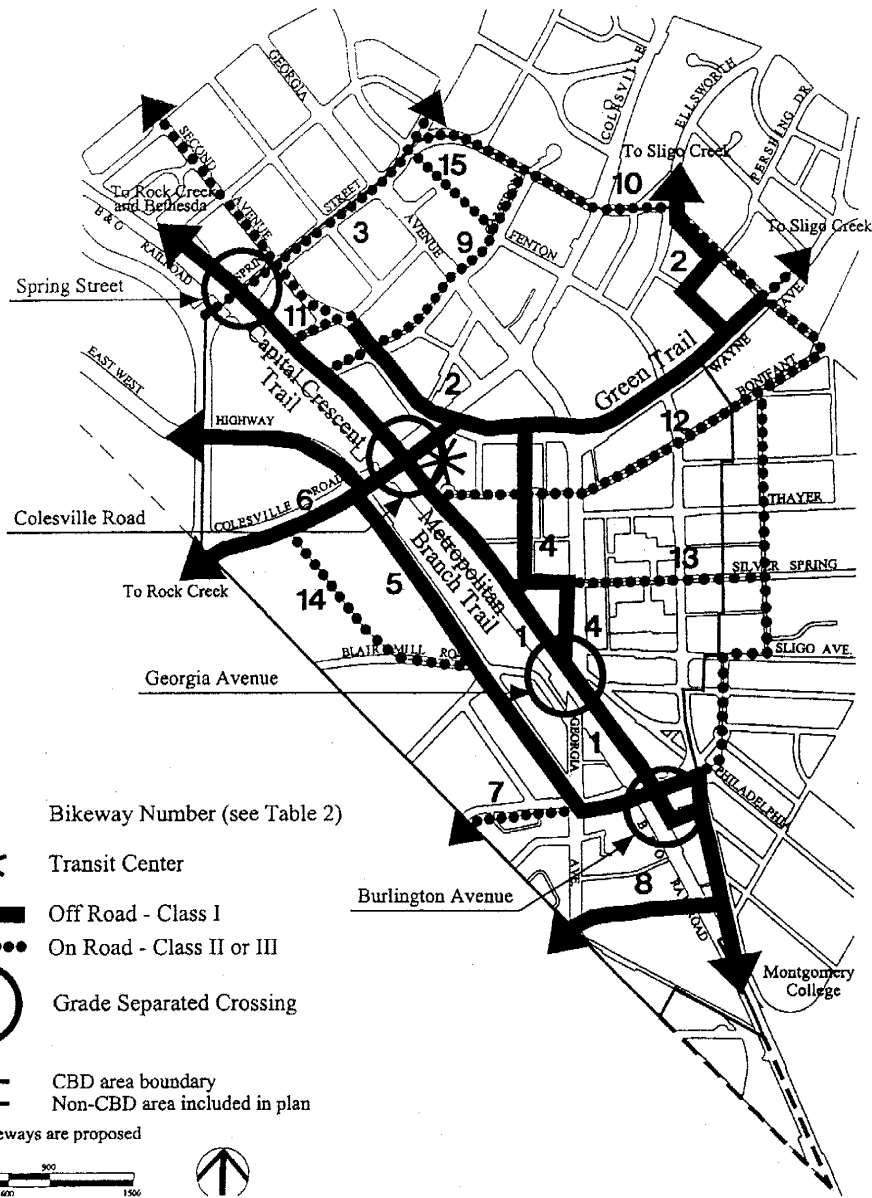


Silver Spring Transit Center



Attachment 11 – CBD Bikeway Network

Map 32 CBD Bikeway Network Plan



Silver Spring Central Business District Sector Plan

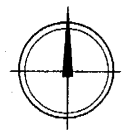
Approved & Adopted

CBD Bikeway Network

March 2005



SILVER SPRING
TRANSIT CENTER
 SILVER SPRING, MARYLAND

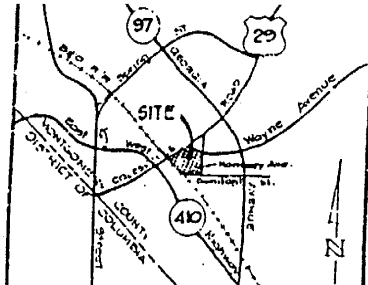


SURV

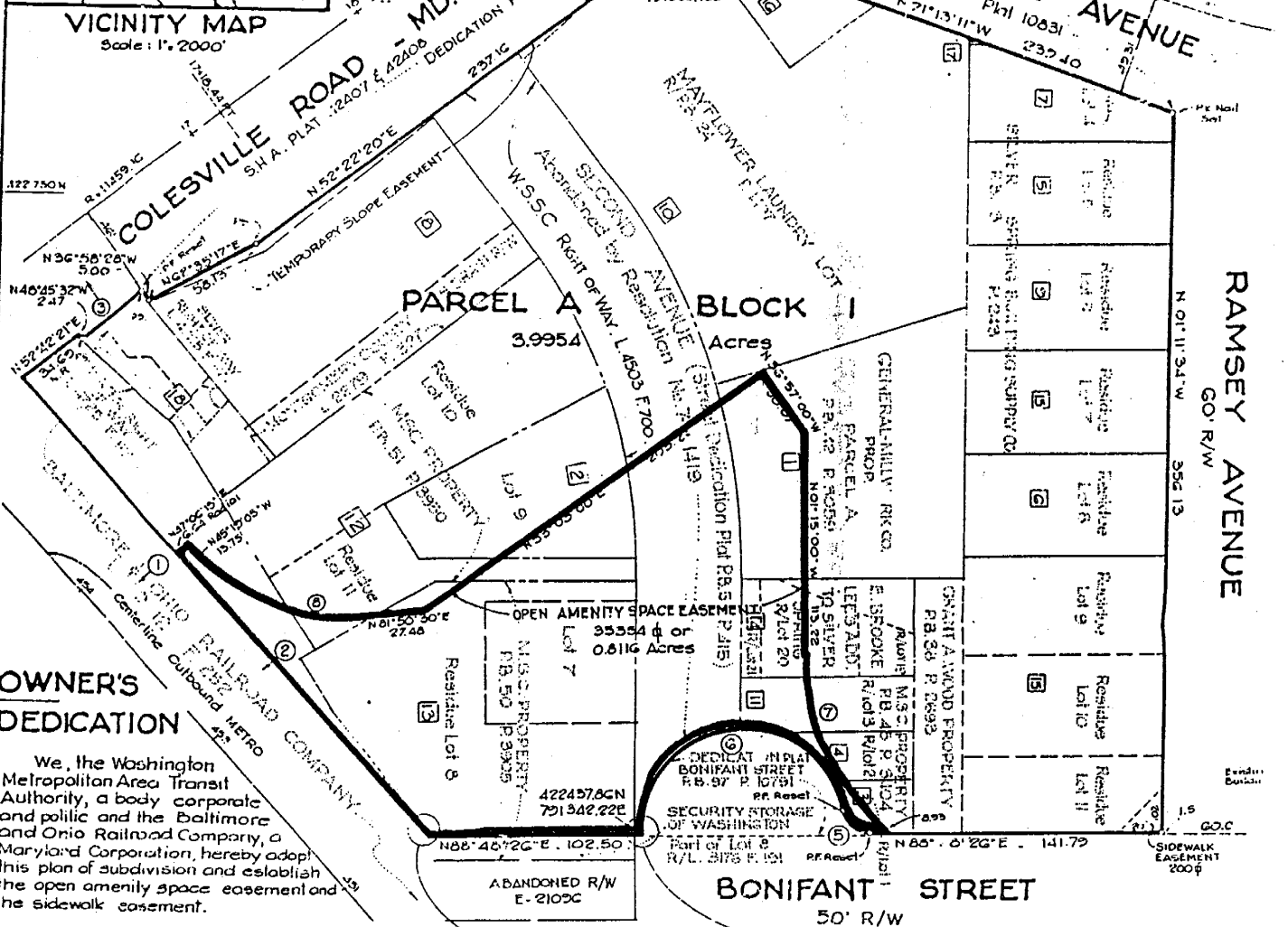
I certify that the plan she Baltimore and Ohio Railroad Co Blair acting in their own right wife of Montgomery Blair, by T.D. 12 of Folio 252 and that Transit Authority by

Frank F. dated Melvin 1970 at

Mail & Cop in Having Down



VICINITY MAP
Scale: 1" = 2000'



OWNER'S DEDICATION

We, the Washington Metropolitan Area Transit Authority, a body corporate and politic and the Baltimore and Ohio Railroad Company, a Maryland Corporation, hereby adopt this plan of subdivision and establish the open amenity space easement and the sidewalk easement.

There are no suits of action, leases, liens or trusts on the property included in this plan of subdivision.

September 15, 1978

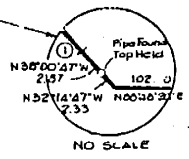
THE WASHINGTON METROPOLITAN AREA TRANSIT AUTHORITY

By *Joseph D. M. Aldoor*
Joseph D. M. Aldoor
Director
Office of Real Estate

September 15, 1978

THE BALTIMORE AND OHIO RAILROAD COMPANY

Attest: *J.A. Miller* By: *M.G. Trimble*
J.A. Miller M.G. Trimble
Appraiser Manager, Office Services
Real Estate & Industrial Dev.



LEGEND
N.R. - Nonradial
R/W - Residue
P.B. - Plat Book
P. - Plat
L. - Liber
F. - Folio
P.S. - Pipe Set
P.F. - Pipe Found
R/W - Right of Way

E. BROOKE SILVER SPRING
LEE'S ADDITION TO
P. 200
791042.54 and the Azimul
Property points are in plac
The total area include
June 16, 1978

CURVE TABLE

No.	Radius	Delta	Arc	Tan.	Chord	Chd. Bearing
1	14323.52	01° 12' 14"	300.22	150.49	300.22	N42° 45' 38" W
2	14323.52	03° 44' 14"	164.29	22.15	164.29	N42° 31' 38" W
3	11505.10	00° 11' 46"	39.50	19.75	39.50	N52° 52' 06" E
4	30.00	56° 21' 29"	22.53	16.09	28.36	N80° 34' 34" E
5	15.00	79° 52' 04"	20.91	12.52	19.22	N51° 15' 32" W
6	50.00	174° 02' 12"	151.65	—	92.06	N01° 39' 24" E
7	112.00	51° 13' 00"	100.12	53.66	96.82	N22° 51' 30" W
8	34.00	52° 50' 25"	86.69	46.70	83.65	N71° 44' 18" W
9	358.00	20° 00' 00"	138.33	70.16	138.22	N81° 12' 42" W

MARYLAND NATIONAL CAPITAL PARK & PLANNING COMMISSION
MONTGOMERY COUNTY PLANNING BOARD
APPROVED: OCTOBER 26, 1978
Ray Peterson Chairman
Paul E. Ferguson Secretary-Treasurer
M.N.C.P.&P.C. RECORD FILE No. 525-64

MONTGOMERY COUNTY, MARYLAND
DEPARTMENT OF TRANSPORTATION
APPROVED: 1 NOVEMBER 1978
By: *Paul E. Ferguson*
Deputy Director

RECORDED: 11-16-78
PLAT BOOK: 106
PLAT NO: 12175

SILVER SPRING GLENM
THIRTEENTI
MONTGOMERY
SCALE: 1" = 50'
JOHN
CIVIL ENGINEER
2311 UNIVERSITY