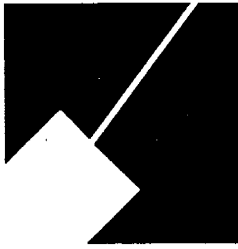


Item # 9

M-NCPPC



MONTGOMERY COUNTY DEPARTMENT OF PARK AND PLANNING

THE MARYLAND-NATIONAL CAPITAL
PARK AND PLANNING COMMISSION

8787 Georgia Avenue
Silver Spring, Maryland 20910-3760
301-495-4500, www.mncppc.org

MEMORANDUM

DATE: March 25, 2005

TO: Montgomery County Planning Board

FROM: Catherine Conlon
Development Review Division
(301) 495-4542

SUBJECT: Informational Maps for Subdivision Items on the
Planning Board's Agenda for March 31, 2005.

Attached are copies of plan drawings for item #07, #08, #09, #10, #11 and #12. These subdivision items are scheduled for Planning Board consideration on March 31, 2005. The items are further identified as follows:

Agenda Item #07 - Preliminary Plan 1-05058
Ashton Manor

Agenda Item #08 - Preliminary Plan 1-04100
Hill Property

Agenda Item #09 - Preliminary Plan 1-04110
The Reserve at Fair Hill

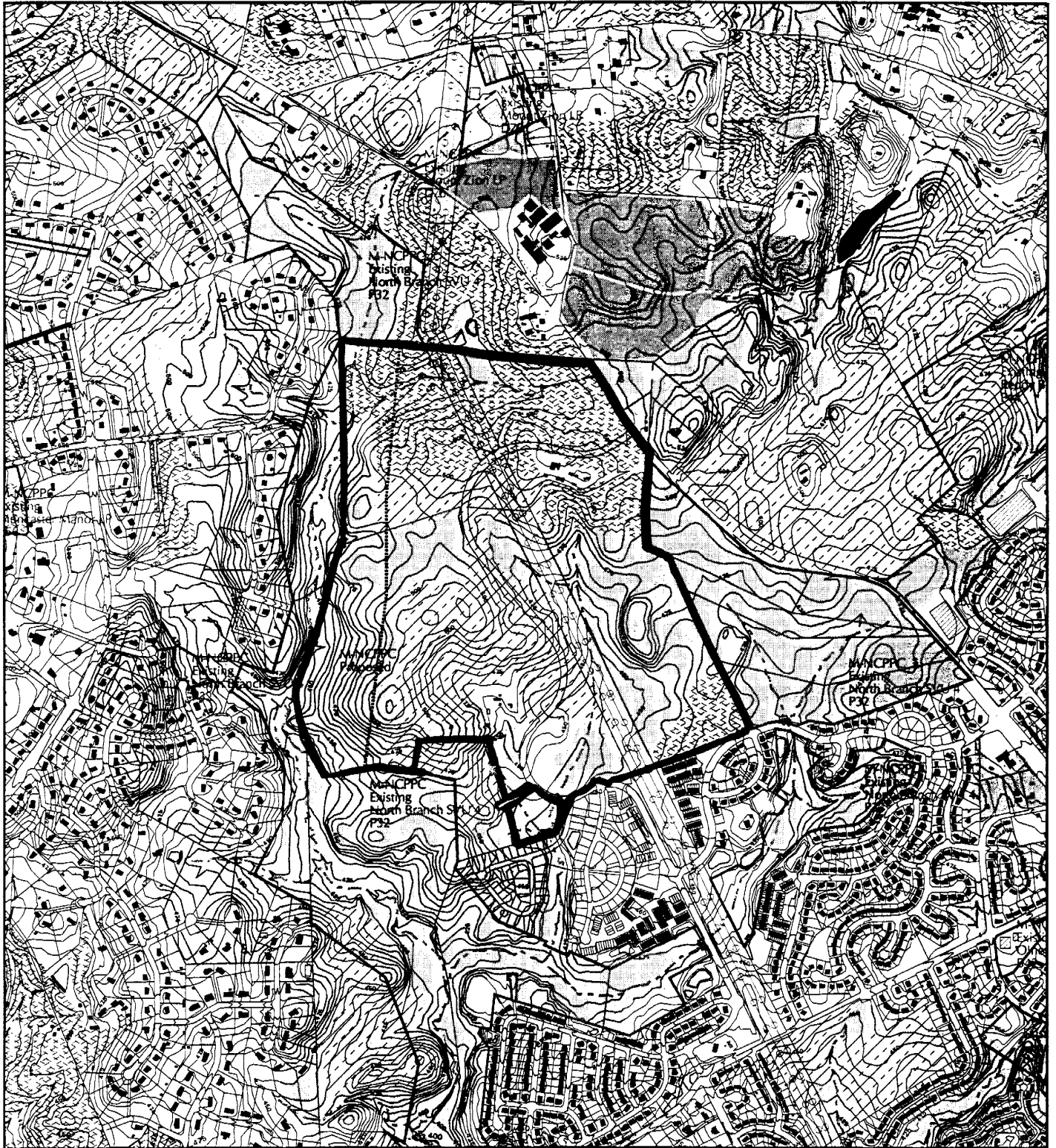
Agenda Item #10 - Preliminary Plan 1-05003
Linthicum West Property

Agenda Item #11 - Preliminary Plan 1-05026
The Towns of Boland Farms

Agenda Item #12 - Preliminary Plan 1-03062
Village of Potomac

Attachment

THE RESERVE AT FAIR HILL (1-04110)



Map compiled on December 21, 2004 at 10:10 AM | Site located on base sheet no - 226NW05

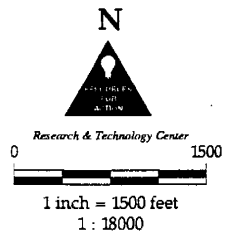
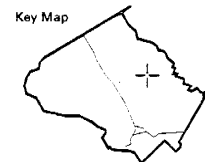
NOTICE

The planimetric, property, and topographic information shown on this map is based on copyrighted Map Products from the Montgomery County Department of Park and Planning of the Maryland-National Capital Park and Planning Commission, and may not be copied or reproduced without written permission from M-NCPPC.

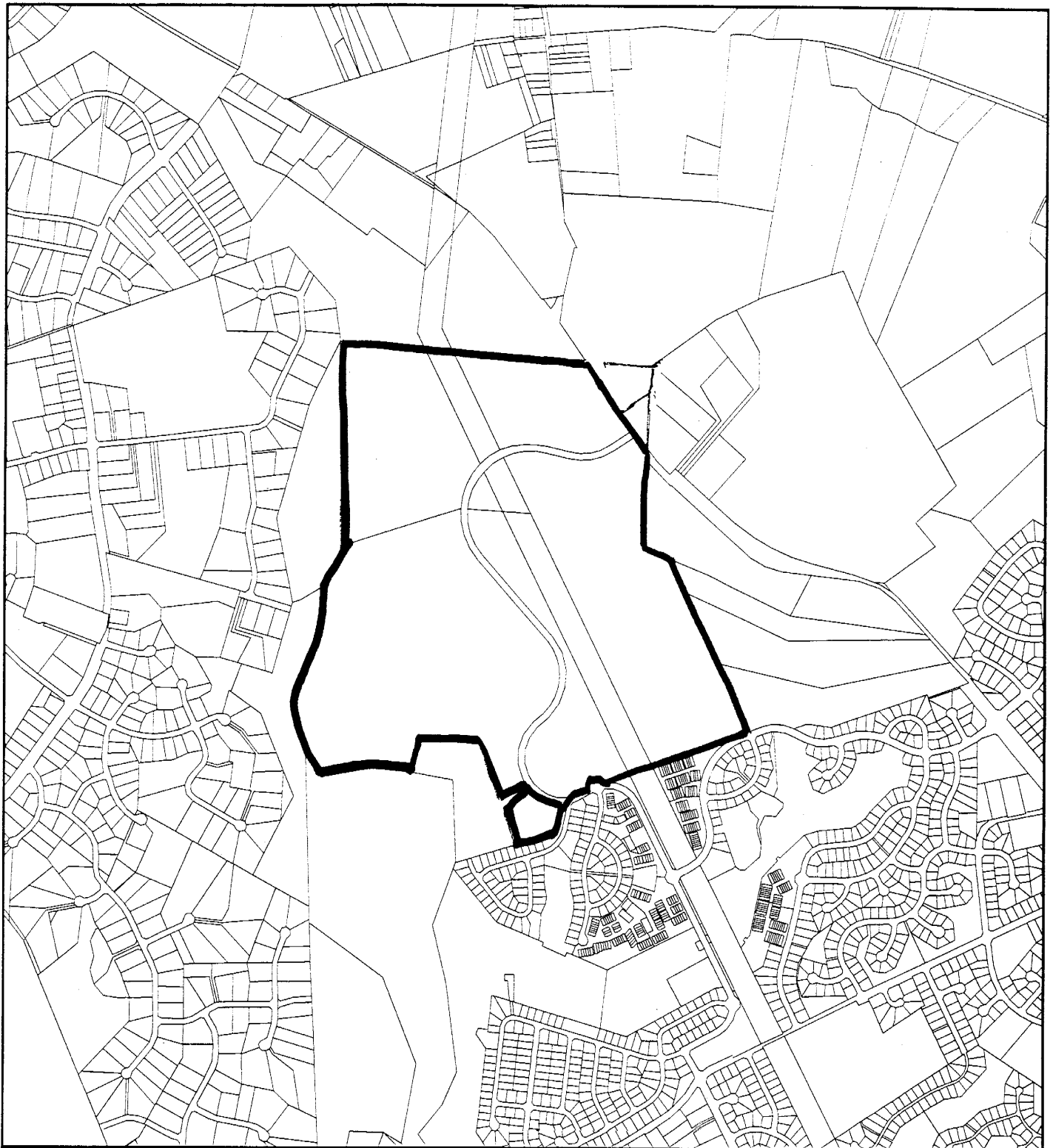
Property lines are compiled by adjusting the property lines to topography created from aerial photography and should not be interpreted as actual field surveys. Planimetric features were compiled from 1:14400 scale aerial photography using stereo photogrammetric methods.

This map is created from a variety of data sources, and may not reflect the most current conditions in any one location and may not be completely accurate or up to date. All map features are approximately within five feet of their true location. This map may not be the same as a map of the same area plotted at an earlier time as the data is continuously updated. Use of this map, other than for general planning purposes is not recommended. - Copyright 1998

MONTGOMERY COUNTY DEPARTMENT OF PARK AND PLANNING
 THE MARYLAND-NATIONAL CAPITAL PARK AND PLANNING COMMISSION
 8787 Georgia Avenue - Silver Spring, Maryland 20910-3760



THE RESERVE AT FAIR HILL (1-04110)



Map compiled on December 21, 2004 at 10:20 AM | Site located on base sheet no - 226NW05

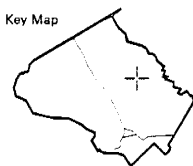
NOTICE

The planimetric, property, and topographic information shown on this map is based on copyrighted Map Products from the Montgomery County Department of Park and Planning of the Maryland-National Capital Park and Planning Commission, and may not be copied or reproduced without written permission from M-NCPPC.

Property lines are compiled by adjusting the property lines to topography created from aerial photography and should not be interpreted as actual field surveys. Planimetric features were compiled from 1:14400 scale aerial photography using stereo photogrammetric methods.

This map is created from a variety of data sources, and may not reflect the most current conditions in any one location and may not be completely accurate or up to date. All map features are approximately within five feet of their true location. This map may not be the same as a map of the same area plotted at an earlier time as the data is continuously updated. Use of this map, other than for general planning purposes is not recommended. - Copyright 1998

Key Map



N



Research & Technology Center



1 inch = 1500 feet
1 : 18000

