

# 4501 PINETREE ROAD (1-05062)



Map compiled on January 24, 2005 at 12:51 PM | Site located on base sheet no - 222NW04

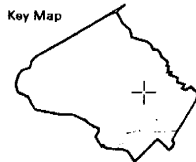
**NOTICE**

The planimetric, property, and topographic information shown on this map is based on copyrighted Map Products from the Montgomery County Department of Park and Planning of the Maryland - National Capital Park and Planning Commission, and may not be copied or reproduced without written permission from M-NCPPC.

Property lines are compiled by adjusting the property lines to topography created from aerial photography and should not be interpreted as actual field surveys. Planimetric features were compiled from 1:14400 scale aerial photography using stereo photogrammetric methods.

This map is created from a variety of data sources, and may not reflect the most current conditions in any one location and may not be completely accurate or up to date. All map features are approximately within five feet of their true location. This map may not be the same as a map of the same area plotted at an earlier time as the data is continuously updated. Use of this map, other than for general planning purposes is not recommended. - Copyright 1998

Key Map



N

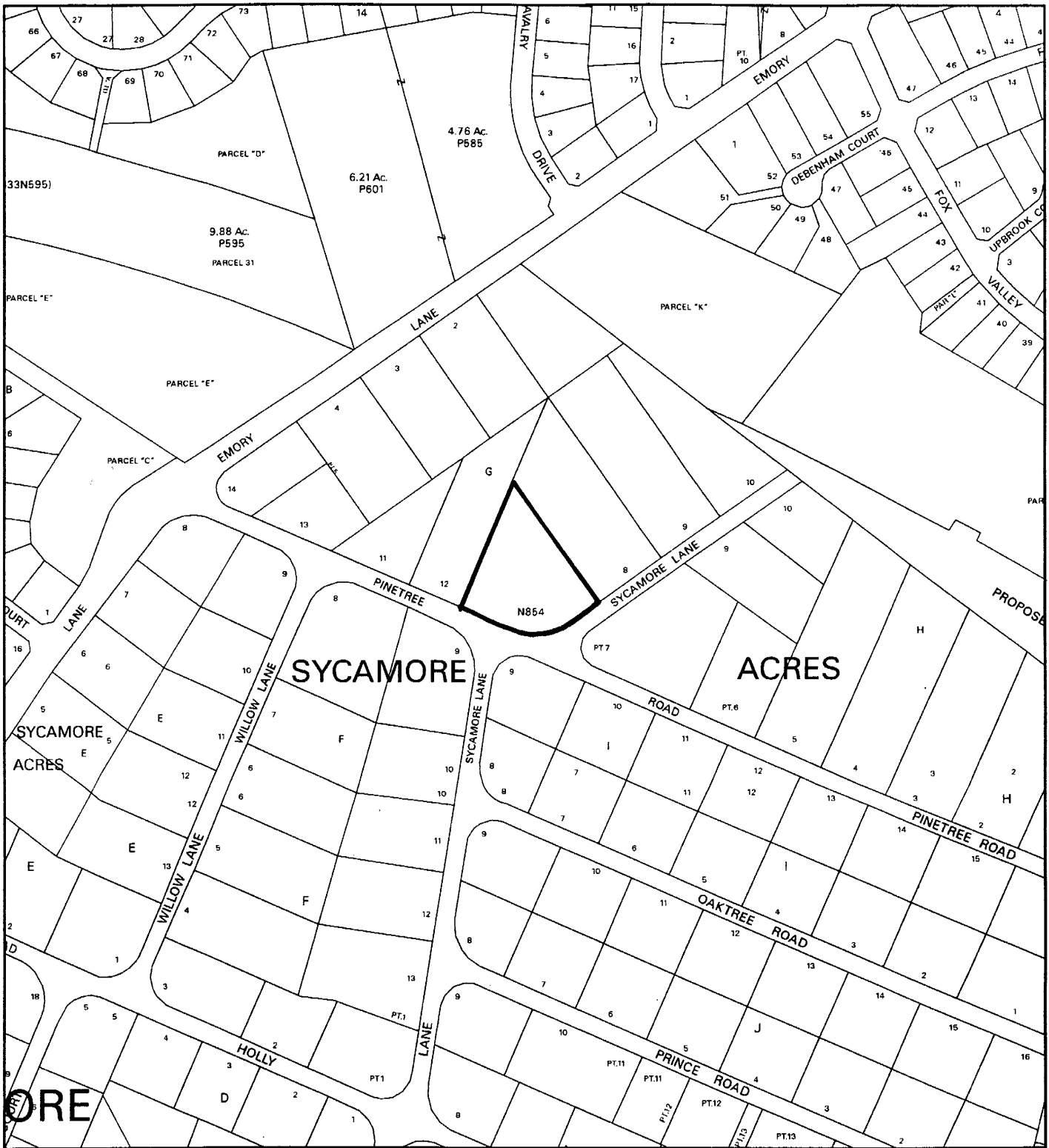


Research & Technology Center



1 inch = 400 feet  
1 : 4800

# 4501 PINETREE ROAD (1-05062)



Map compiled on January 24, 2005 at 12:53 PM | Site located on base sheet no - 222NW04

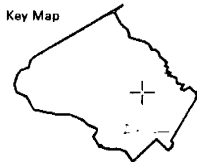
## NOTICE

The planimetric, property, and topographic information shown on this map is based on copyrighted Map Products from the Montgomery County Department of Park and Planning of the Maryland - National Capital Park and Planning Commission, and may not be copied or reproduced without written permission from M-NCPPC.

Property lines are compiled by adjusting the property lines to topography created from aerial photography and should not be interpreted as actual field surveys. Planimetric features were compiled from 1:14400 scale aerial photography using stereo photogrammetric methods.

This map is created from a variety of data sources, and may not reflect the most current conditions in any one location and may not be completely accurate or up to date. All map features are approximately within five feet of their true location. This map may not be the same as a map of the same area plotted at an earlier time as the data is continuously updated. Use of this map, other than for general planning purposes is not recommended. - Copyright 1998

Key Map



N



Research & Technology Center



1 inch = 400 feet  
1 : 4800



# ATTACHMENT C

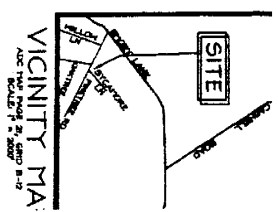
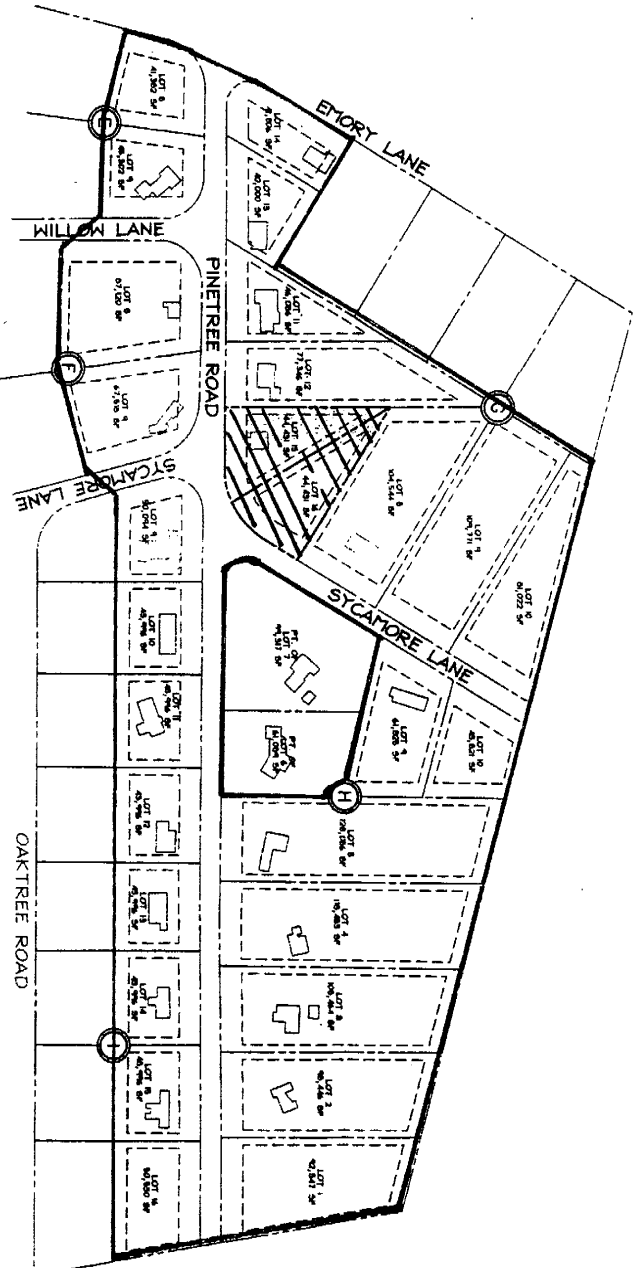
## GENERAL NOTES

- 1) WATER CONTAINMENT - 1 - SHOWS CONTAINMENT - 1
- 2) BOUNDARY AND HOUSE LOCATION REPRESENTATION BASED ON AVAILABLE PLATS PROVIDED BY H-CHANG
- 3) PROPERTY SHOWN ON THE MAP IS THE SAME AS IN "K" STRUCTURE ADDRESS
- 4) PROPERTY SHOWN ON HOBAS 2007 SHEET 223 244 01, 02, 03, 04, 05, 06, 07, 08, 09, 10, 11, 12, 13, 14, 15, 16, 17, 18, 19, 20, 21, 22, 23, 24, 25, 26, 27, 28, 29, 30, 31, 32, 33, 34, 35, 36, 37, 38, 39, 40, 41, 42, 43, 44, 45, 46, 47, 48, 49, 50, 51, 52, 53, 54, 55, 56, 57, 58, 59, 60, 61, 62, 63, 64, 65, 66, 67, 68, 69, 70, 71, 72, 73, 74, 75, 76, 77, 78, 79, 80, 81, 82, 83, 84, 85, 86, 87, 88, 89, 90, 91, 92, 93, 94, 95, 96, 97, 98, 99, 100, 101, 102, 103, 104, 105, 106, 107, 108, 109, 110, 111, 112, 113, 114, 115, 116, 117, 118, 119, 120, 121, 122, 123, 124, 125, 126, 127, 128, 129, 130, 131, 132, 133, 134, 135, 136, 137, 138, 139, 140, 141, 142, 143, 144, 145, 146, 147, 148, 149, 150, 151, 152, 153, 154, 155, 156, 157, 158, 159, 160, 161, 162, 163, 164, 165, 166, 167, 168, 169, 170, 171, 172, 173, 174, 175, 176, 177, 178, 179, 180, 181, 182, 183, 184, 185, 186, 187, 188, 189, 190, 191, 192, 193, 194, 195, 196, 197, 198, 199, 200, 201, 202, 203, 204, 205, 206, 207, 208, 209, 210, 211, 212, 213, 214, 215, 216, 217, 218, 219, 220, 221, 222, 223, 224, 225, 226, 227, 228, 229, 230, 231, 232, 233, 234, 235, 236, 237, 238, 239, 240, 241, 242, 243, 244, 245, 246, 247, 248, 249, 250, 251, 252, 253, 254, 255, 256, 257, 258, 259, 260, 261, 262, 263, 264, 265, 266, 267, 268, 269, 270, 271, 272, 273, 274, 275, 276, 277, 278, 279, 280, 281, 282, 283, 284, 285, 286, 287, 288, 289, 290, 291, 292, 293, 294, 295, 296, 297, 298, 299, 300, 301, 302, 303, 304, 305, 306, 307, 308, 309, 310, 311, 312, 313, 314, 315, 316, 317, 318, 319, 320, 321, 322, 323, 324, 325, 326, 327, 328, 329, 330, 331, 332, 333, 334, 335, 336, 337, 338, 339, 340, 341, 342, 343, 344, 345, 346, 347, 348, 349, 350, 351, 352, 353, 354, 355, 356, 357, 358, 359, 360, 361, 362, 363, 364, 365, 366, 367, 368, 369, 370, 371, 372, 373, 374, 375, 376, 377, 378, 379, 380, 381, 382, 383, 384, 385, 386, 387, 388, 389, 390, 391, 392, 393, 394, 395, 396, 397, 398, 399, 400, 401, 402, 403, 404, 405, 406, 407, 408, 409, 410, 411, 412, 413, 414, 415, 416, 417, 418, 419, 420, 421, 422, 423, 424, 425, 426, 427, 428, 429, 430, 431, 432, 433, 434, 435, 436, 437, 438, 439, 440, 441, 442, 443, 444, 445, 446, 447, 448, 449, 450, 451, 452, 453, 454, 455, 456, 457, 458, 459, 460, 461, 462, 463, 464, 465, 466, 467, 468, 469, 470, 471, 472, 473, 474, 475, 476, 477, 478, 479, 480, 481, 482, 483, 484, 485, 486, 487, 488, 489, 490, 491, 492, 493, 494, 495, 496, 497, 498, 499, 500, 501, 502, 503, 504, 505, 506, 507, 508, 509, 510, 511, 512, 513, 514, 515, 516, 517, 518, 519, 520, 521, 522, 523, 524, 525, 526, 527, 528, 529, 530, 531, 532, 533, 534, 535, 536, 537, 538, 539, 540, 541, 542, 543, 544, 545, 546, 547, 548, 549, 550, 551, 552, 553, 554, 555, 556, 557, 558, 559, 560, 561, 562, 563, 564, 565, 566, 567, 568, 569, 570, 571, 572, 573, 574, 575, 576, 577, 578, 579, 580, 581, 582, 583, 584, 585, 586, 587, 588, 589, 590, 591, 592, 593, 594, 595, 596, 597, 598, 599, 600, 601, 602, 603, 604, 605, 606, 607, 608, 609, 610, 611, 612, 613, 614, 615, 616, 617, 618, 619, 620, 621, 622, 623, 624, 625, 626, 627, 628, 629, 630, 631, 632, 633, 634, 635, 636, 637, 638, 639, 640, 641, 642, 643, 644, 645, 646, 647, 648, 649, 650, 651, 652, 653, 654, 655, 656, 657, 658, 659, 660, 661, 662, 663, 664, 665, 666, 667, 668, 669, 670, 671, 672, 673, 674, 675, 676, 677, 678, 679, 680, 681, 682, 683, 684, 685, 686, 687, 688, 689, 690, 691, 692, 693, 694, 695, 696, 697, 698, 699, 700, 701, 702, 703, 704, 705, 706, 707, 708, 709, 710, 711, 712, 713, 714, 715, 716, 717, 718, 719, 720, 721, 722, 723, 724, 725, 726, 727, 728, 729, 730, 731, 732, 733, 734, 735, 736, 737, 738, 739, 740, 741, 742, 743, 744, 745, 746, 747, 748, 749, 750, 751, 752, 753, 754, 755, 756, 757, 758, 759, 760, 761, 762, 763, 764, 765, 766, 767, 768, 769, 770, 771, 772, 773, 774, 775, 776, 777, 778, 779, 780, 781, 782, 783, 784, 785, 786, 787, 788, 789, 790, 791, 792, 793, 794, 795, 796, 797, 798, 799, 800, 801, 802, 803, 804, 805, 806, 807, 808, 809, 810, 811, 812, 813, 814, 815, 816, 817, 818, 819, 820, 821, 822, 823, 824, 825, 826, 827, 828, 829, 830, 831, 832, 833, 834, 835, 836, 837, 838, 839, 840, 841, 842, 843, 844, 845, 846, 847, 848, 849, 850, 851, 852, 853, 854, 855, 856, 857, 858, 859, 860, 861, 862, 863, 864, 865, 866, 867, 868, 869, 870, 871, 872, 873, 874, 875, 876, 877, 878, 879, 880, 881, 882, 883, 884, 885, 886, 887, 888, 889, 890, 891, 892, 893, 894, 895, 896, 897, 898, 899, 900, 901, 902, 903, 904, 905, 906, 907, 908, 909, 910, 911, 912, 913, 914, 915, 916, 917, 918, 919, 920, 921, 922, 923, 924, 925, 926, 927, 928, 929, 930, 931, 932, 933, 934, 935, 936, 937, 938, 939, 940, 941, 942, 943, 944, 945, 946, 947, 948, 949, 950, 951, 952, 953, 954, 955, 956, 957, 958, 959, 960, 961, 962, 963, 964, 965, 966, 967, 968, 969, 970, 971, 972, 973, 974, 975, 976, 977, 978, 979, 980, 981, 982, 983, 984, 985, 986, 987, 988, 989, 990, 991, 992, 993, 994, 995, 996, 997, 998, 999, 1000

## ZONING DATA

- 1) ZONING: R-1
- 2) FRONT YARD SETBACK: 10 FT
- 3) SIDE YARD SETBACK: 5 FT
- 4) REAR YARD SETBACK: 10 FT
- 5) MAXIMUM LOT AREA: 40,000 SQ FT
- 6) MAXIMUM LOT WIDTH: 120 FT
- 7) MAXIMUM LOT DEPTH: 330 FT
- 8) MAXIMUM LOT AREA: 40,000 SQ FT
- 9) MAXIMUM LOT WIDTH: 120 FT
- 10) MAXIMUM LOT DEPTH: 330 FT

## Neighborhood Delineation Map



NOTE: THIS NEIGHBORHOOD MAP IS FOR GRAPHICAL REPRESENTATION ONLY. ALL LOT AREAS WERE TAKEN FROM AVAILABLE RECORD PLATS.

**CLIENT**  
 THE CHANG GROUP, INC.  
 4501 PINETREE ROAD  
 PARCEL N854, PLAT 2218  
 BLOCK G, SYCAMORE ACRES  
 NEIGHBORHOOD MAP

M-NCP&PC 1-05062  
 PROPOSED LOTS 15 & 16  
 4501 PINETREE ROAD  
 PARCEL N854, PLAT 2218  
 BLOCK G, SYCAMORE ACRES  
 NEIGHBORHOOD MAP

4501 Pinetree Road							
Tabular Summary							
Lot	Block	Frontage	Alignment	Size	Shape	Width*	Buildable Area
14(3)	G	245	Corner	41,806	Corner	146	15,335
9(3)	I	272	Corner	50,094	Corner	248	20,422
8(3)	E	196	Corner	41,382	Corner	250	18,759
9(3)	E	250	Corner	45,302	Corner	250	20,951
8(3)	F	331	Corner	87,120	Corner	295	52,594
9(3)	F	270	Corner	67,518	Corner	300	36,550
12	G	150	Perpendicular	77,346	Irregular	150	18,055
9	H	200	Perpendicular	61,825	Irregular	192	36,974
10	H	200	Perpendicular	43,821	Irregular	200	22,694
2	H	200	Perpendicular	98,446	Irregular	200	66,678
3	H	200	Perpendicular	108,464	Irregular	200	75,379
4	H	200	Perpendicular	118,483	Irregular	200	44,330
5	H	200	Perpendicular	128,066	Irregular	200	93,755
13	G	238	Perpendicular	40,000	Irregular	204	17,463
1	H	250	Perpendicular	92,347	Irregular	211	60,531
8	G	216	Perpendicular	104,544	Irregular	216	71,413
10	G	227	Perpendicular	81,022	Irregular	142	18,907
9	G	200	Perpendicular	109,771	Rectangle	200	78,681
10	I	220	Perpendicular	43,996	Rectangle	220	21,275
11	I	220	Perpendicular	43,996	Rectangle	220	21,275
12	I	220	Perpendicular	43,996	Rectangle	220	21,275
13	I	220	Perpendicular	43,996	Rectangle	220	21,275
14	I	220	Perpendicular	43,996	Rectangle	220	21,275
15	I	220	Perpendicular	43,996	Rectangle	220	21,275
16	I	235	Perpendicular	50,530	Rectangle	252	21,275
11	G	236	Perpendicular	46,086	Triangle	118	23,682
<b>Proposed Lots</b>							
15	G	229	Perpendicular	44,431	Triangle	198	22,410
16	G	209	Perpendicular	44,431	Triangle	184	22,714
* Width at the BRL							
Please note that the orginial Parcel N854 contained 2.04 acres.							