

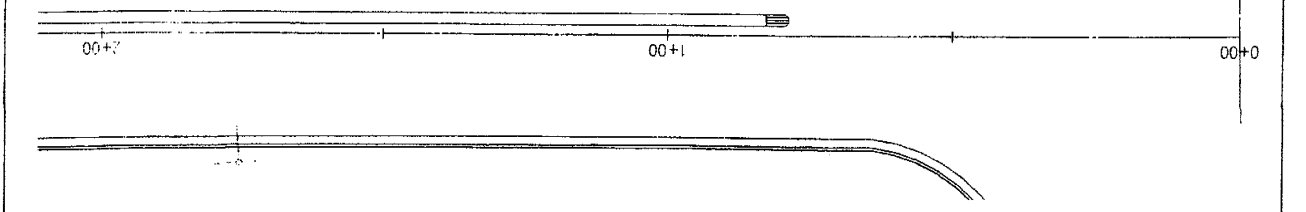
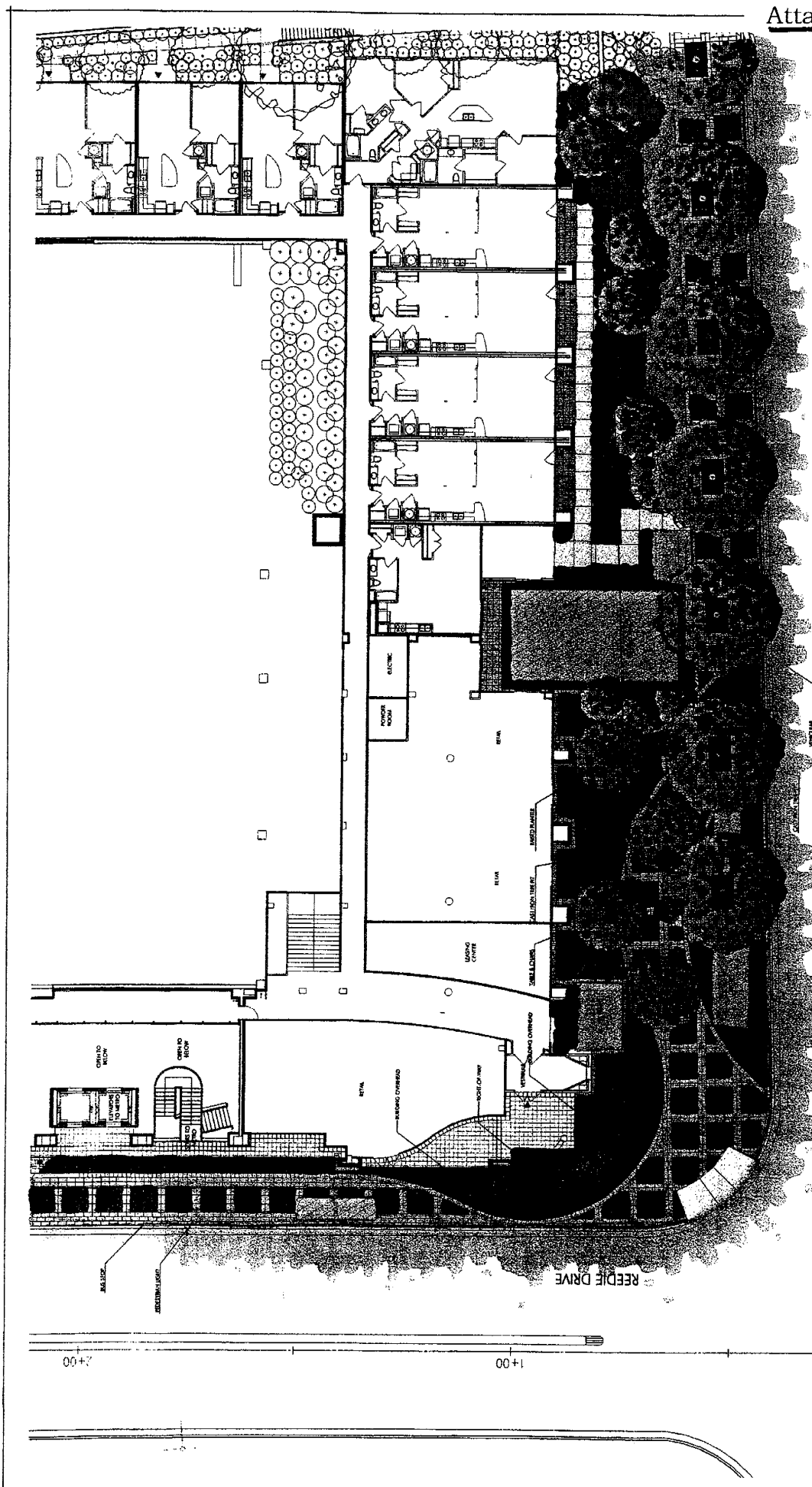
Exhibit A

GEORGIA AVE. & REEDIE DRIVE
 Wheaton Kiss and Ride
 Wheaton, Maryland

DESIGN	DATE	BY
DRAWN		
CHECKED		
SCALE		
PROJECT NO.		
DATE		

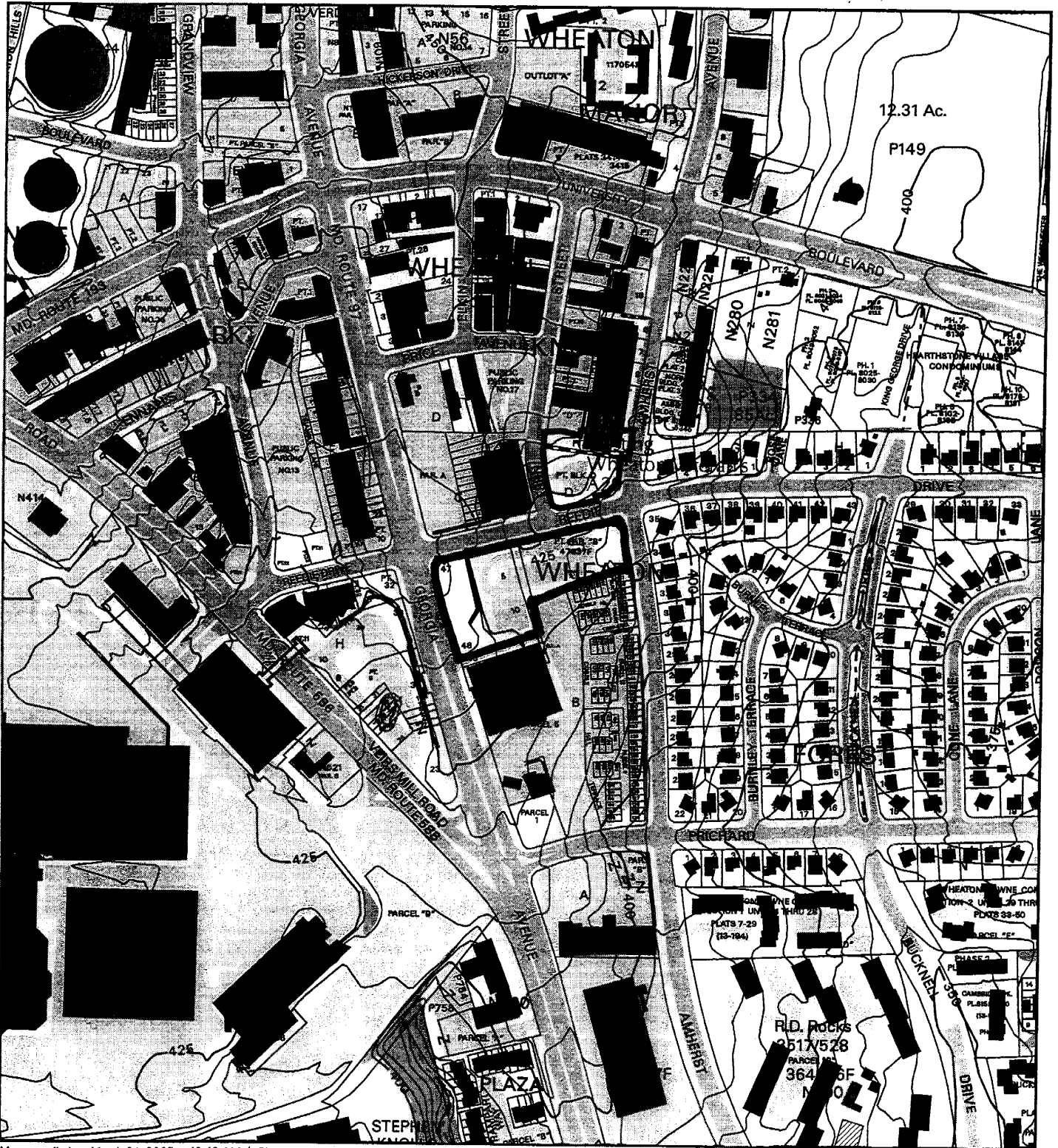
BOZZUTO MANAGEMENT
 6401 Cobden Triangle
 Suite 200
 Greenbelt, MD 20770

STUBBS
 11400 Rockville Pike, Suite 100
 Rockville, MD 20850
 Tel: 301-761-1000
 Fax: 301-761-1001
 www.stubbs.com



P:\2004\1027\Wheaton Kiss and Ride\3-Cover\Plan3-Cover.dwg, 22-Apr-04, 11:22:49 AM, 100%
 P:\2004\1027\Wheaton Kiss and Ride\3-Cover\Plan3-Cover.dwg, 22-Apr-04, 11:22:49 AM, 100%

WHEATON FORES-PARCELS 13 & 14 (1-05021)



Map compiled on March 04, 2005 at 10:43 AM | Site located on base sheet no - 214NW02

NOTICE

The planimetric, property, and topographic information shown on this map is based on copyrighted Map Products from the Montgomery County Department of Park and Planning of the Maryland-National Capital Park and Planning Commission, and may not be copied or reproduced without written permission from M-NCPPC.

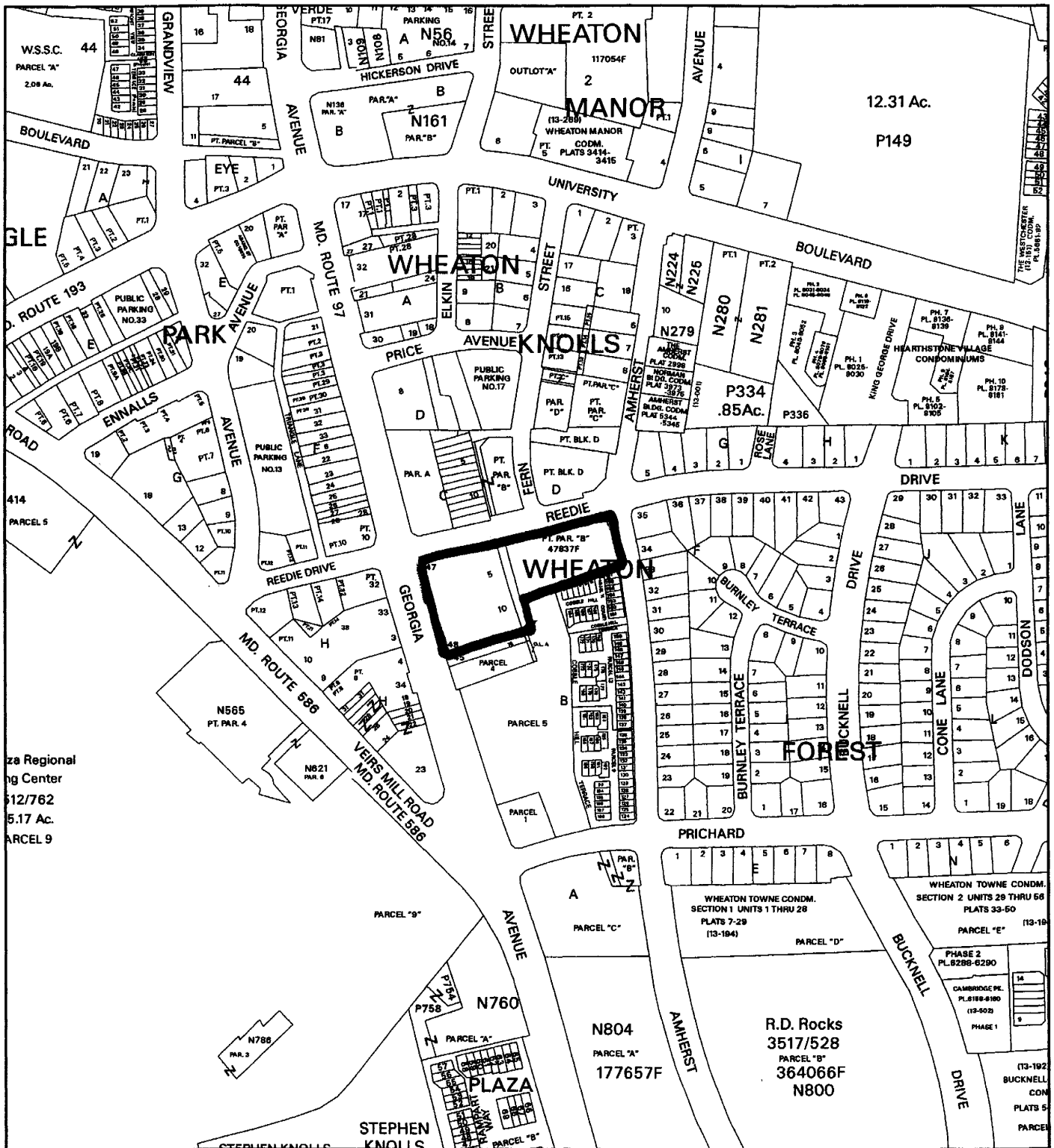
Property lines are compiled by adjusting the property lines to topography created from aerial photography and should not be interpreted as actual field surveys. Planimetric features were compiled from 1:14400 scale aerial photography using stereo photogrammetric methods.

This map is created from a variety of data sources, and may not reflect the most current conditions in any one location and may not be completely accurate or up to date. All map features are approximately within five feet of their true location. This map may not be the same as a map of the same area plotted at an earlier time as the data is continuously updated. Use of this map, other than for general planning purposes is not recommended. - Copyright 1998

Key Map



WHEATON FOREST - PARCELS 13 & 14, BLK. B (1-05021)



Map compiled on September 07, 2004 at 12:56 PM | Site located on base sheet no - 214NW02

NOTICE

The planimetric, property, and topographic information shown on this map is based on copyrighted Map Products from the Montgomery County Department of Park and Planning of the Maryland - National Capital Park and Planning Commission, and may not be copied or reproduced without written permission from M-NCPPC.

Property lines are compiled by adjusting the property lines to topography created from aerial photography and should not be interpreted as actual field surveys. Planimetric features were compiled from 1:14400 scale aerial photography using stereo photogrammetric methods.

This map is created from a variety of data sources, and may not reflect the most current conditions in any one location and may not be completely accurate or up to date. All map features are approximately within five feet of their true location. This map may not be the same as a map of the same area plotted at an earlier time as the data is continuously updated. Use of this map, other than for general planning purposes is not recommended. - Copyright 1998

Key Map



N



Research & Technology Center 400



1 inch = 400 feet
1 : 4800

MONTGOMERY COUNTY DEPARTMENT OF PARK AND PLANNING
THE MARYLAND-NATIONAL CAPITAL PARK AND PLANNING COMMISSION

8787 Georgia Avenue - Silver Spring, Maryland 20910-3760