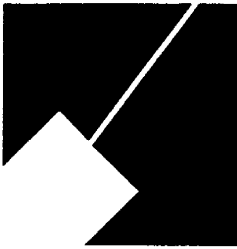


Item#9

M-NCPPC



MONTGOMERY COUNTY DEPARTMENT OF PARK AND PLANNING

THE MARYLAND-NATIONAL CAPITAL
PARK AND PLANNING COMMISSION

8787 Georgia Avenue
Silver Spring, Maryland 20910-3760
301-495-4500, www.mncppc.org

M E M O R A N D U M

DATE: April 1, 2005

TO: Montgomery County Planning Board

FROM: Catherine Conlon
Development Review Division
(301) 495-4542

SUBJECT: Informational Maps for Subdivision Items on the
Planning Board's Agenda for April 1, 2005.

Attached are copies of plan drawings for item #04, #07, #09, and #10. These subdivision items are scheduled for Planning Board consideration on April 1, 2005. The items are further identified as follows:

Agenda Item #04 - Preliminary Plan 1-05054
National Park Seminary

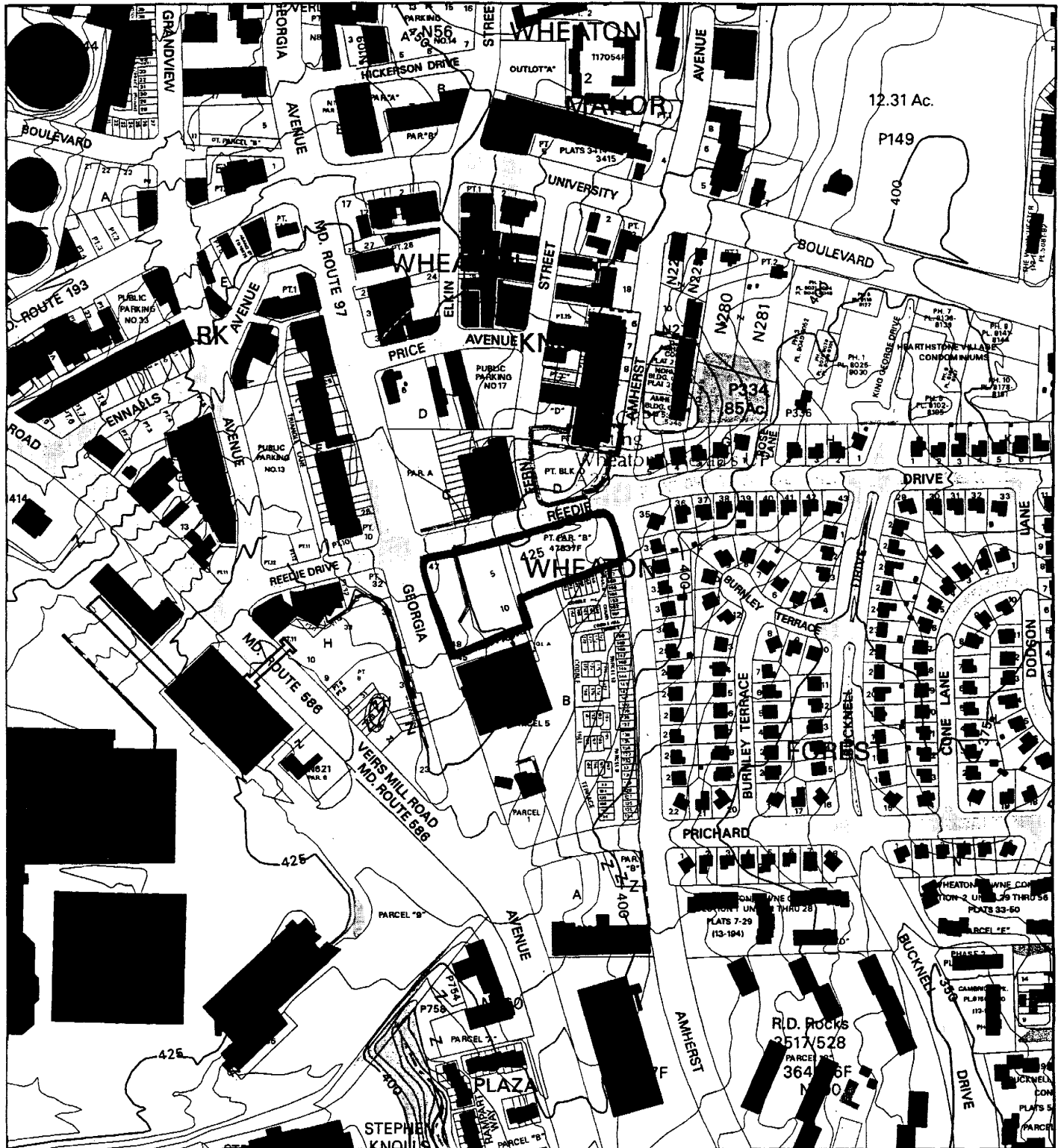
Agenda Item #07 - Preliminary Plan 1-05062
4501 Pinetree Road

Agenda Item #09 - Preliminary Plan 1-05021
Wheaton Forest

Agenda Item #10 - Pre-Preliminary Plan 7-05017
MDR-Shiloh Property

Attachment

WHEATON FOREST - PARCELS 13 & 14, BLK. B (1-05021)



Map compiled on September 07, 2004 at 1:49 PM | Site located on base sheet no - 214NW02

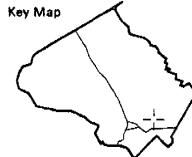
NOTICE

The planimetric, property, and topographic information shown on this map is based on copyrighted Map Products from the Montgomery County Department of Park and Planning of the Maryland -National Capital Park and Planning Commission, and may not be copied or reproduced without written permission from M-NCPPC.

Property lines are compiled by adjusting the property lines to topography created from aerial photography and should not be interpreted as actual field surveys. Planimetric features were compiled from 1:14400 scale aerial photography using stereo photogrammetric methods.

This map is created from a variety of data sources, and may not reflect the most current conditions in any one location and may not be completely accurate or up to date. All map features are approximately within five feet of their true location. This map may not be the same as a map of the same area plotted at an earlier time as the data is continuously updated. Use of this map, other than for general planning purposes is not recommended. - Copyright 1998

Key Map



N



Research & Technology Center

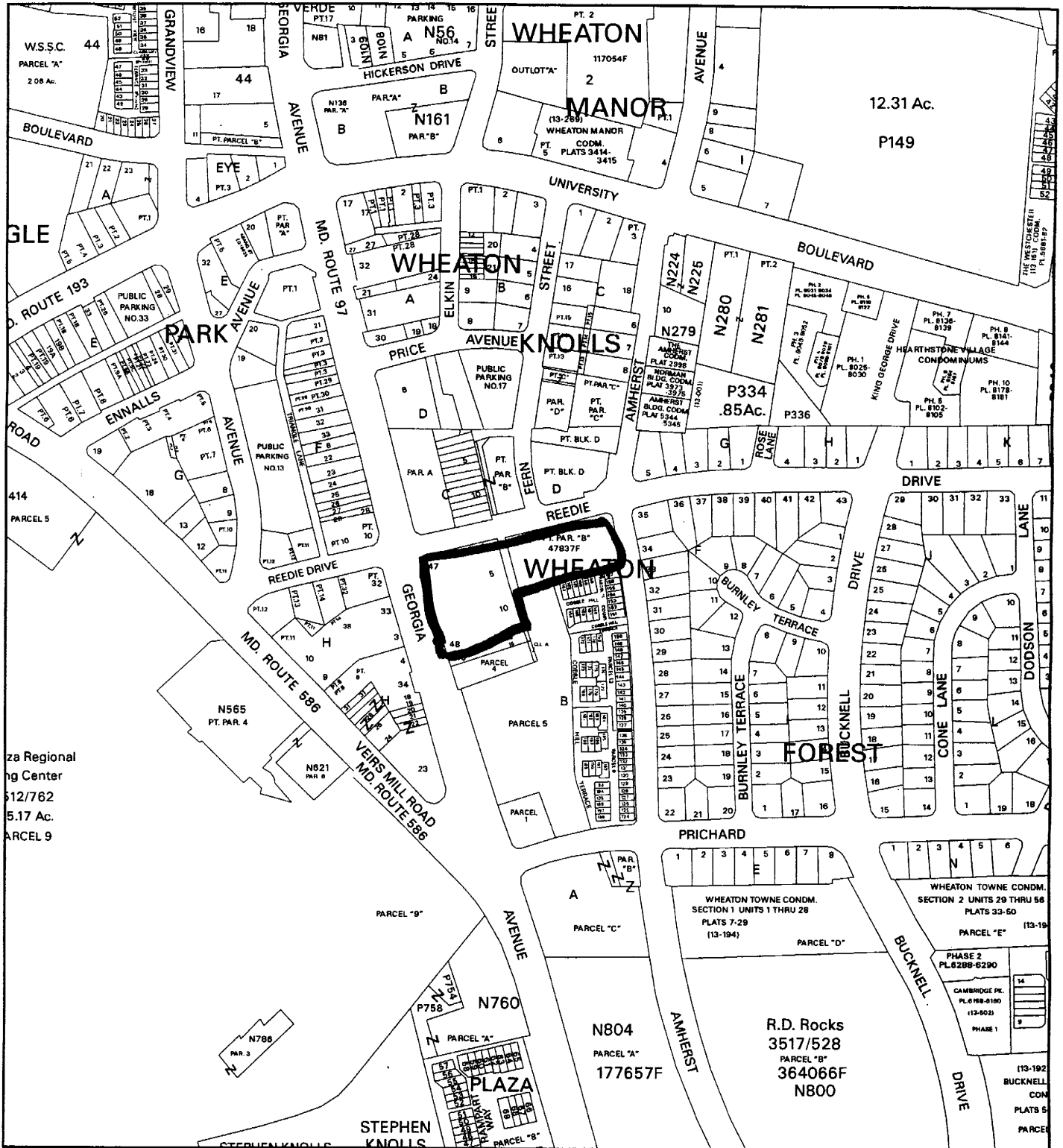
0 400

1 inch = 400 feet
1 : 4800

MONTGOMERY COUNTY DEPARTMENT OF PARK AND PLANNING
THE MARYLAND-NATIONAL CAPITAL PARK AND PLANNING COMMISSION

8787 Georgia Avenue - Silver Spring, Maryland 20910-3760

WHEATON FOREST - PARCELS 13 & 14, BLK. B (1-05021)



Map compiled on September 07, 2004 at 12:56 PM | Site located on base sheet no - 214NW02

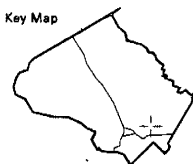
NOTICE

The planimetric, property, and topographic information shown on this map is based on copyrighted Map Products from the Montgomery County Department of Park and Planning of the Maryland - National Capital Park and Planning Commission, and may not be copied or reproduced without written permission from M-NCPPC.

Property lines are compiled by adjusting the property lines to topography created from aerial photography and should not be interpreted as actual field surveys. Planimetric features were compiled from 1:14400 scale aerial photography using stereo photogrammetric methods.

This map is created from a variety of data sources, and may not reflect the most current conditions in any one location and may not be completely accurate or up to date. All map features are approximately within five feet of their true location. This map may not be the same as a map of the same area plotted at an earlier time as the data is continuously updated. Use of this map, other than for general planning purposes is not recommended. - Copyright 1998

Key Map



Research & Technology Center 400



1 inch = 400 feet
1 : 4800

