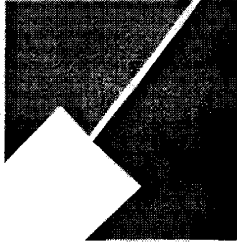


Item #6

M-NCPPC



MONTGOMERY COUNTY DEPARTMENT OF PARK AND PLANNING

THE MARYLAND-NATIONAL CAPITAL
PARK AND PLANNING COMMISSION

8787 Georgia Avenue
Silver Spring, Maryland 20910-3760
301-495-4500, www.mncppc.org

M E M O R A N D U M

DATE: April 8, 2005

TO: Montgomery County Planning Board

FROM: Catherine Conlon
Development Review Division
(301) 495-4542

SUBJECT: Informational Maps for Subdivision Items on the
Planning Board's Agenda for April 14, 2005.

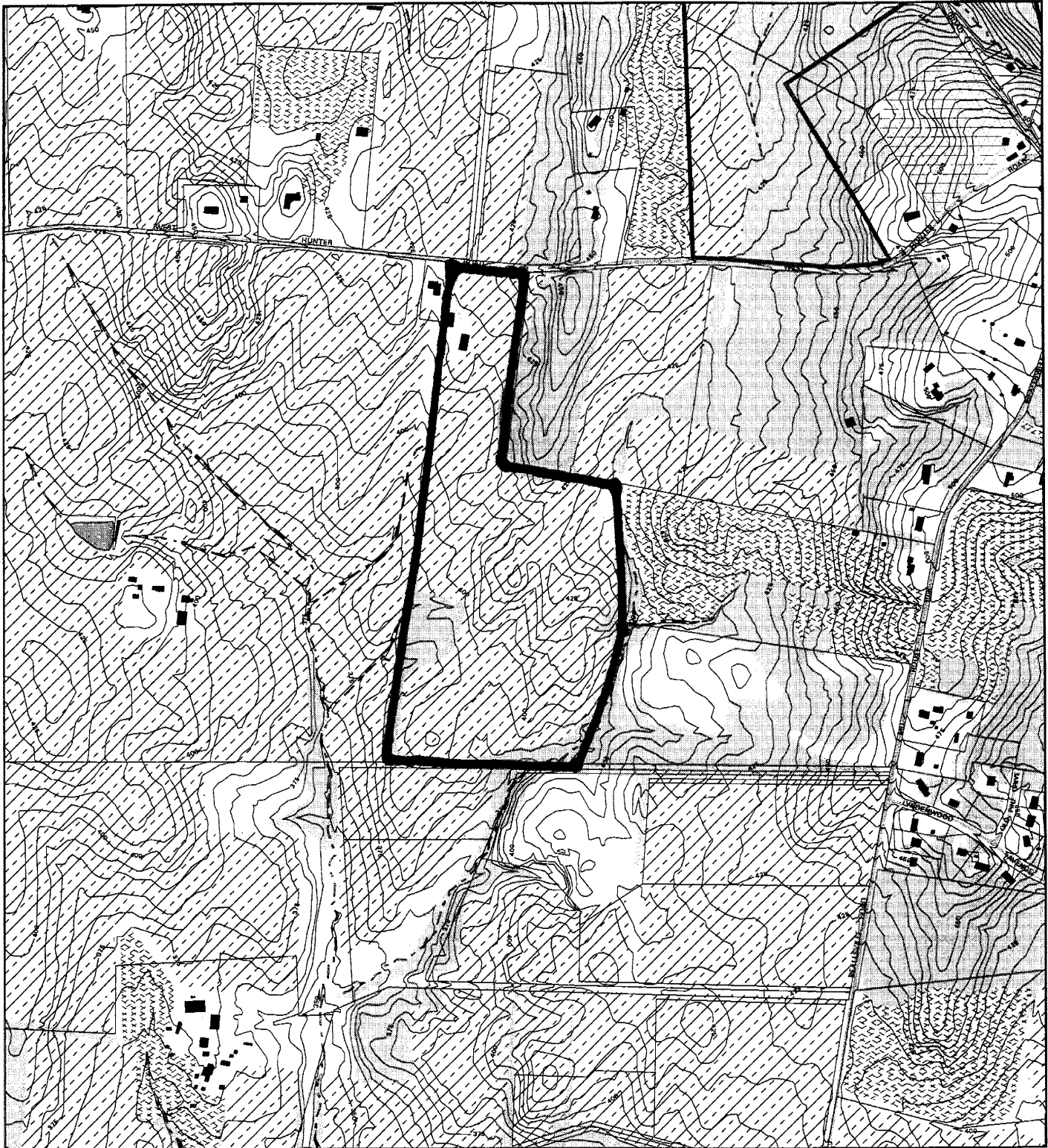
Attached are copies of plan drawings for item #05, and #06. These subdivision items are scheduled for Planning Board consideration on April 14, 2005. The items are further identified as follows:

Agenda Item #05 - Preliminary Plan 1-04102
Lopatin Property

Agenda Item #06 - Preliminary Plan 1-05044
Hunter Property

Attachment

HUNTER PROPERTY (1-05044)



Map compiled on April 08, 2005 at 10:41 AM | Site located on base sheet no - 226NW20

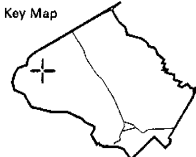
NOTICE

The planimetric, property, and topographic information shown on this map is based on copyrighted Map Products from the Montgomery County Department of Park and Planning of the Maryland - National Capital Park and Planning Commission, and may not be copied or reproduced without written permission from M-NCPPC.

Property lines are compiled by adjusting the property lines to topography created from aerial photography and should not be interpreted as actual field surveys. Planimetric features were compiled from 1:14400 scale aerial photography using stereo photogrammetric methods.

This map is created from a variety of data sources, and may not reflect the most current conditions in any one location and may not be completely accurate or up to date. All map features are approximately within five feet of their true location. This map may not be the same as a map of the same area plotted at an earlier time as the data is continuously updated. Use of this map, other than for general planning purposes is not recommended. - Copyright 1998

Key Map



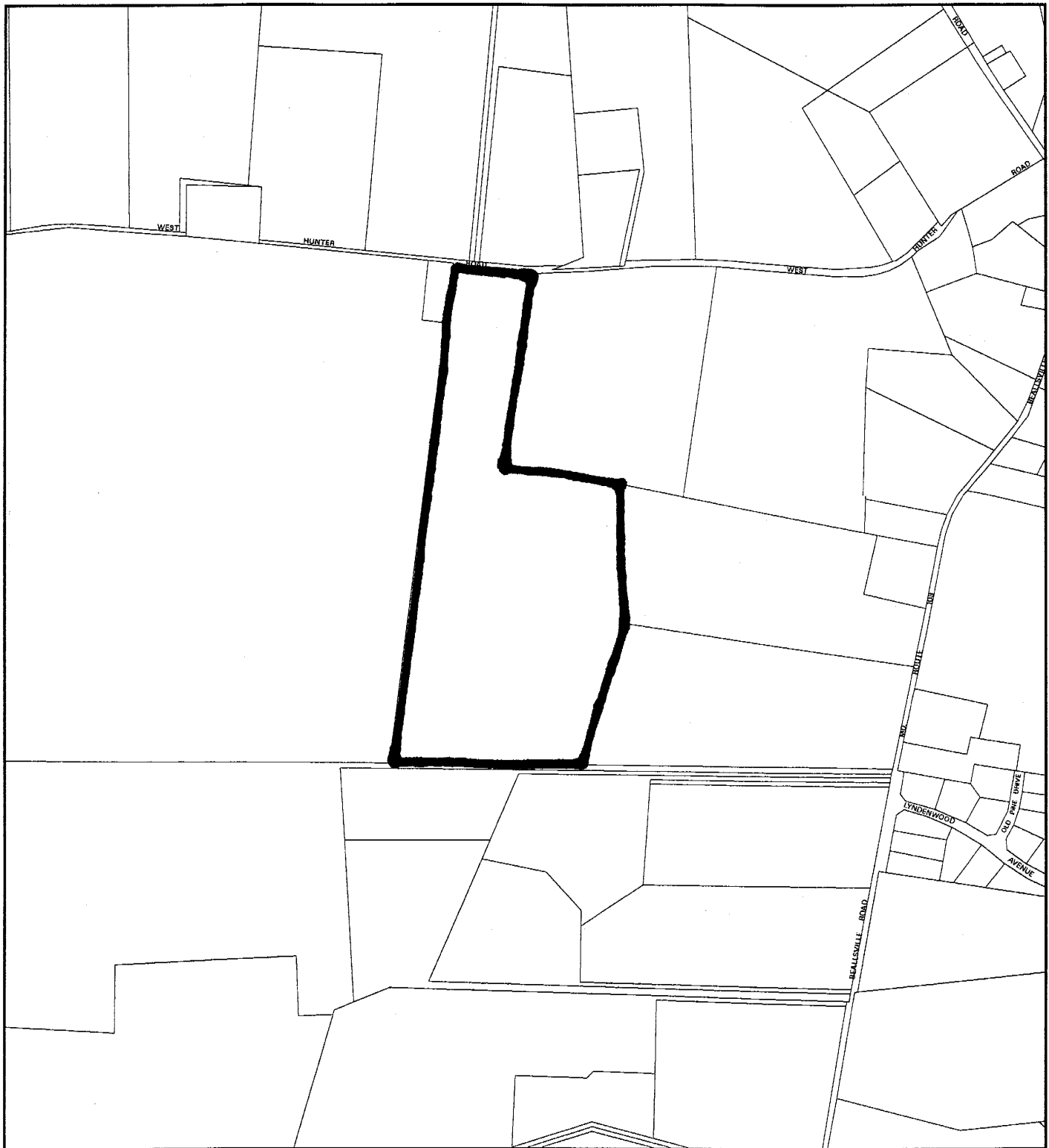
N



Research & Technology Center



HUNTER PROPERTY (1-05044)



Map compiled on April 08, 2005 at 10:38 AM | Site located on base sheet no - 226NW20

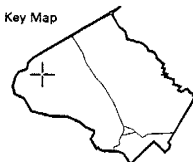
NOTICE

The planimetric, property, and topographic information shown on this map is based on copyrighted Map Products from the Montgomery County Department of Park and Planning of the Maryland-National Capital Park and Planning Commission, and may not be copied or reproduced without written permission from M-NCPPC.

Property lines are compiled by adjusting the property lines to topography created from aerial photography and should not be interpreted as actual field surveys. Planimetric features were compiled from 1:14400 scale aerial photography using stereo photogrammetric methods.

This map is created from a variety of data sources, and may not reflect the most current conditions in any one location and may not be completely accurate or up to date. All map features are approximately within five feet of their true location. This map may not be the same as a map of the same area plotted at an earlier time as the data is continuously updated. Use of this map, other than for general planning purposes is not recommended. - Copyright 1998

Key Map



N



Research & Technology Center



1 inch = 800 feet
1 : 9600

