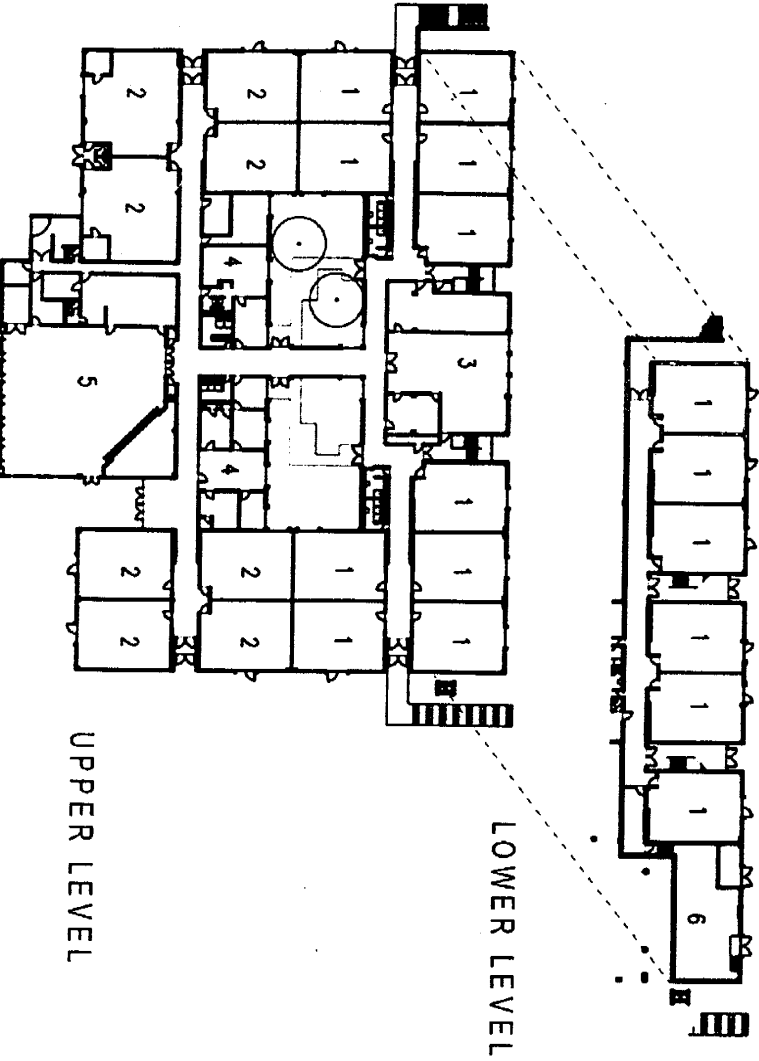
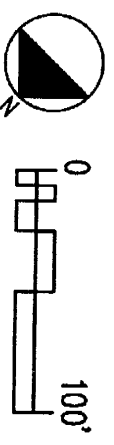


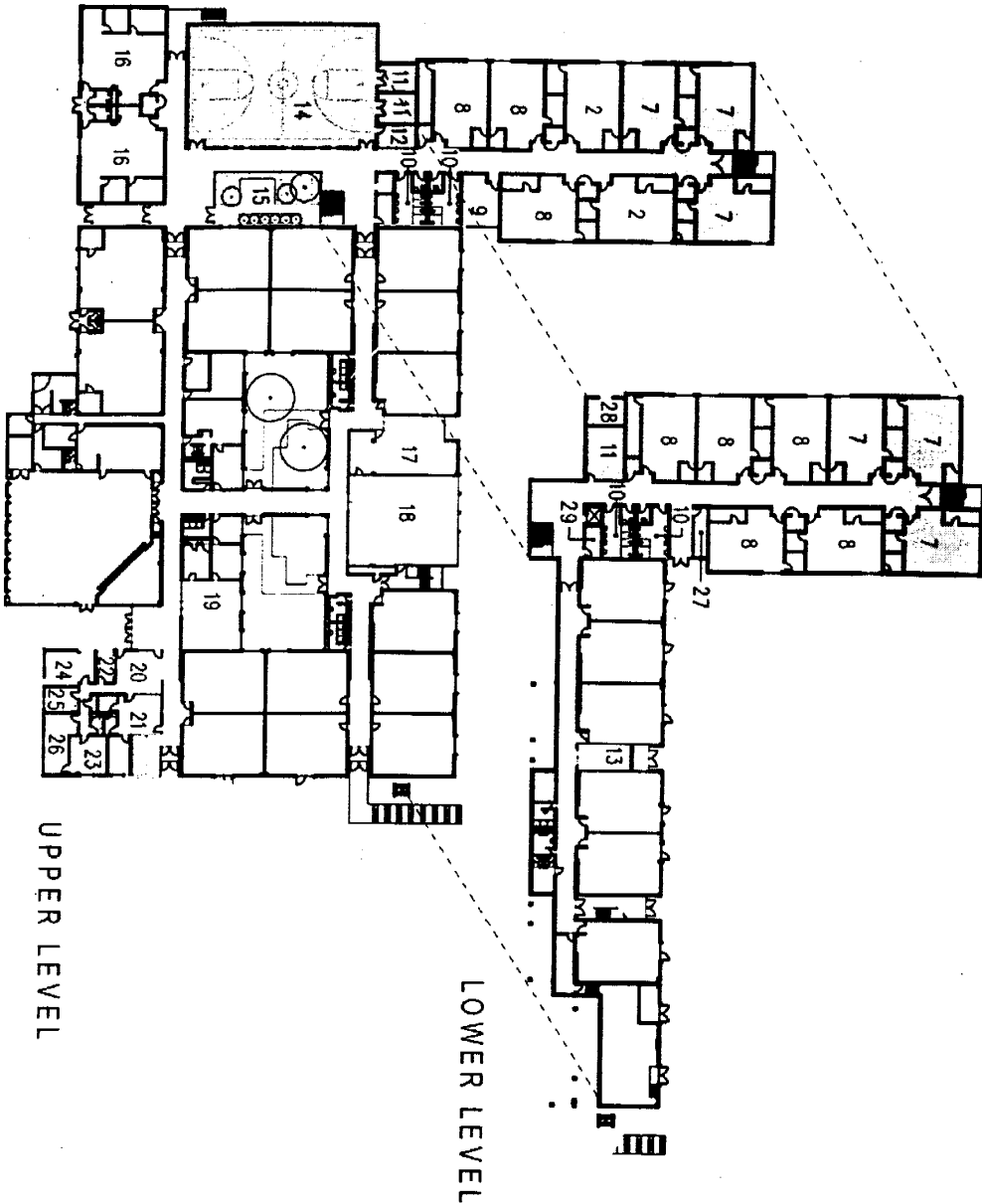
# Existing Plan



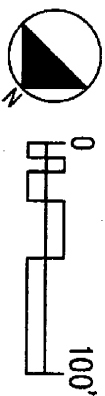
- 1 CLASSROOM
- 2 KINDERGARTEN CLASSROOM
- 3 INSTRUCTIONAL MEDIA CENTER
- 4 ADMIN
- 5 MULTI-PURPOSE
- 6 MECHANICAL ROOM



Proposed Plan

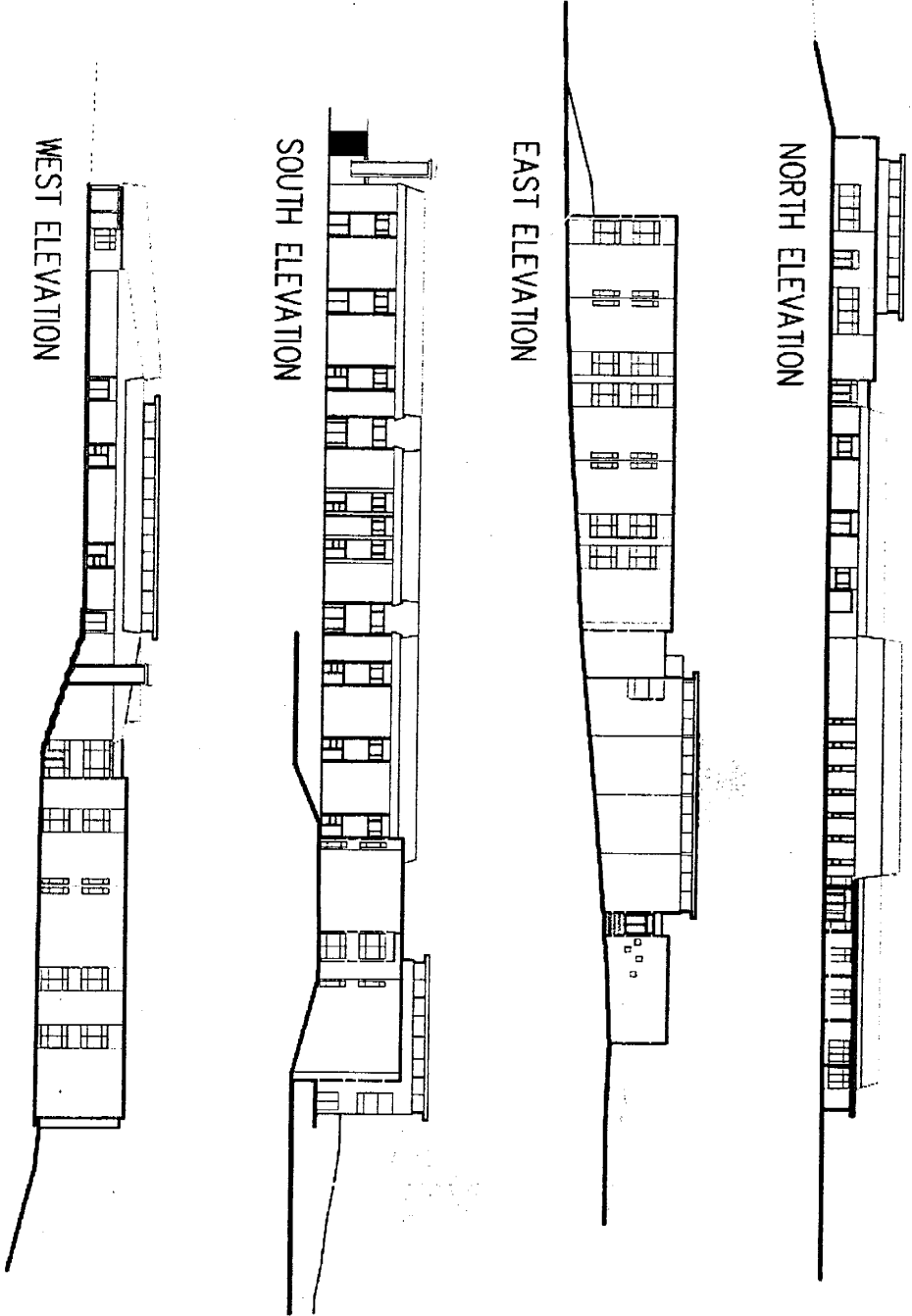


- 7 CLASSROOM (ADD ALT 2)
- 8 CLASSROOM
- 9 FACULTY LOUNGE
- 10 TOILET
- 11 STORAGE (ADD ALT 1)
- 12 PHYSICAL EDUCATION OFFICE (ADD ALT 1)
- 13 STORAGE
- 14 GYMNASIUM (ADD ALT 1)
- 15 COURTYARD
- 16 KINDERGARTEN CLASSROOMS
- 17 INSTRUCTIONAL MEDIA CENTER WORKROOM / OFFICE
- 18 INSTRUCTIONAL MEDIA CENTER
- 19 COMPUTER LAB
- 20 MAIN OFFICE
- 21 HEALTH SUITE
- 22 RECORDS
- 23 PRINCIPAL'S OFFICE
- 24 WORKROOM
- 25 ASSISTANT PRINCIPAL'S OFFICE
- 26 CONFERENCE ROOM
- 27 ELECTRICAL ROOM
- 28 OUTDOOR STORAGE (ADD ALT 1)
- 29 ELEVATOR MACHINE ROOM

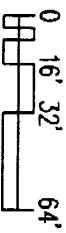


Watkins Mill Elementary School Addition  
 Cho Benn Holback + Associates, Inc.

**Proposed Elevations**



SHADED: PROPOSED ADDITION  
NOT SHADED: EXISTING BUILDING



Watkins Mill Elementary School Addition  
Cho Benn Holback + Associates, Inc.