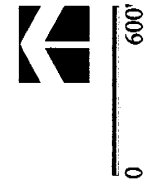


Vicinity Map

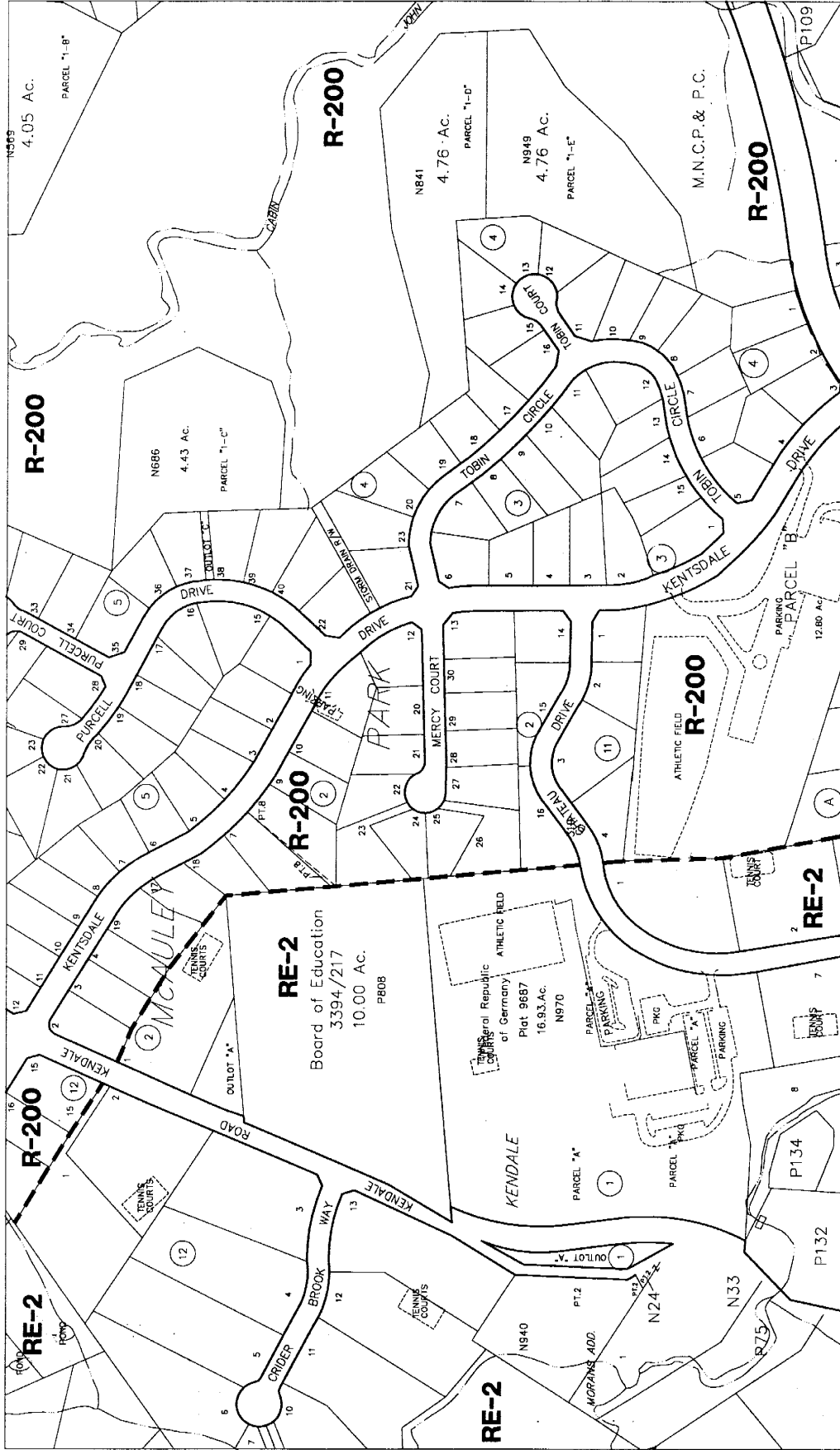


- Proposed Site
- Existing Site



x:\standardsymbols\basel.dwg

Zoning Map



x:\04\LocksES\7LES-base.dwg



- R-200 Residential, One Family - minimum lot area of 20,000 sq. ft. for each dwelling
- RE-2 Residential, One Family - minimum lot area of two acres for each dwelling

Seven Locks Elementary School - Replacement

April 2005

NEW SEVEN LOCKS ES



Map compiled on April 27, 2005 at 8:06 AM | Site located on base sheet no. - 212NNW08 | Date of Orthophotos - April 2004 | Orthophoto Images Licensed from VARGIS LLC.

NOTICE

The planimetric, property, and topographic information shown on this map is based on copyrighted Map Products from the Montgomery County Department of Park and Planning of the Maryland - National Capital Park and Planning Commission, and may not be copied or reproduced without written permission from M-NCPPC.

Property lines are compiled by adjusting the property lines to topography created from aerial photography and should not be interpreted as actual field surveys. Planimetric features were compiled from 1:14,400 scale aerial photography using stereo photogrammetric methods. This map is created from a variety of data sources, and may not reflect the most current conditions in any one location and may not be completely accurate or up to date. All map features are approximately within five feet of their true location. This map may not be the same as a map of the same area plotted at an earlier time as the data is continuously updated. Use of this map, other than for general planning purposes is not recommended. Copyright 1995

MONTGOMERY COUNTY DEPARTMENT OF PARK AND PLANNING
 THE MARYLAND-NATIONAL CAPITAL PARK AND PLANNING COMMISSION
 4747 Georgia Avenue - Silver Spring, Maryland 20910-3760

