

Item #7



THE MARYLAND-NATIONAL CAPITAL PARK AND PLANNING COMMISSION

M E M O R A N D U M

DATE: May 6, 2005

TO: Montgomery County Planning Board

FROM: Catherine Conlon
Development Review Division
(301) 495-4542

SUBJECT: Informational Maps for Subdivision Items on the
Planning Board's Agenda for May 12, 2005.

Attached are copies of plan drawings for item #07, #08, #09, and #10. These subdivision items are scheduled for Planning Board consideration on May 12, 2005. The items are further identified as follows:

Agenda Item #07 - Preliminary Plan 1-05073
Willerburn Acres (Resub)

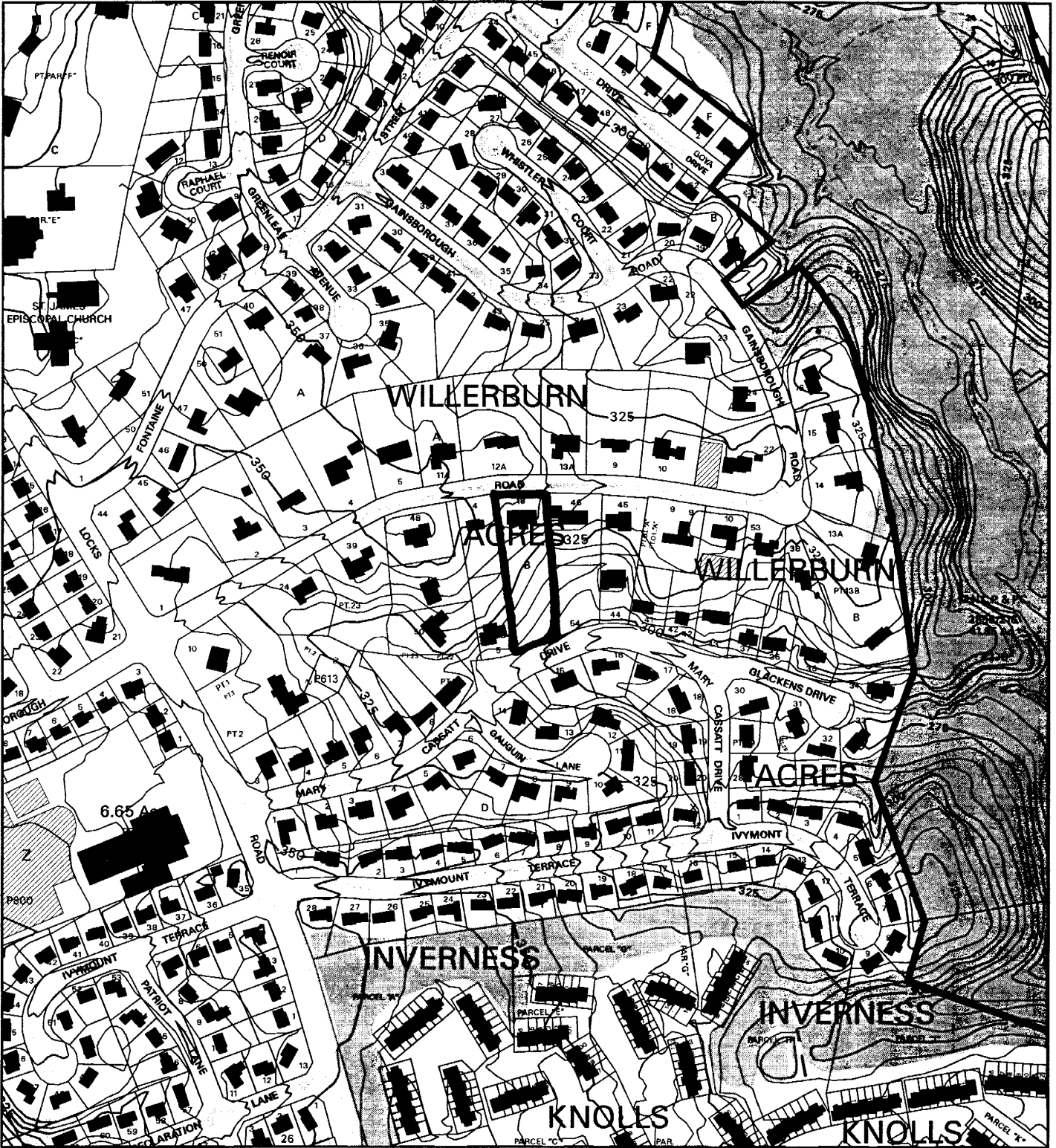
Agenda Item #08 - Preliminary Plan 1-05057
Lake Potomac

Agenda Item #09 - Preliminary Plan 1-05068
McNeill's Addition (Resub)

Agenda Item #10 - Pre-Preliminary Plan 7-05051
Hillmead/Bradley Hills

Attachment

WILLERBURN ESTATES (1-05073)



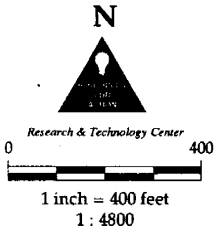
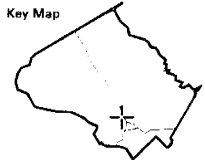
Map compiled on March 15, 2005 at 10:24 AM | Site located on base sheet no - 215NW08

NOTICE

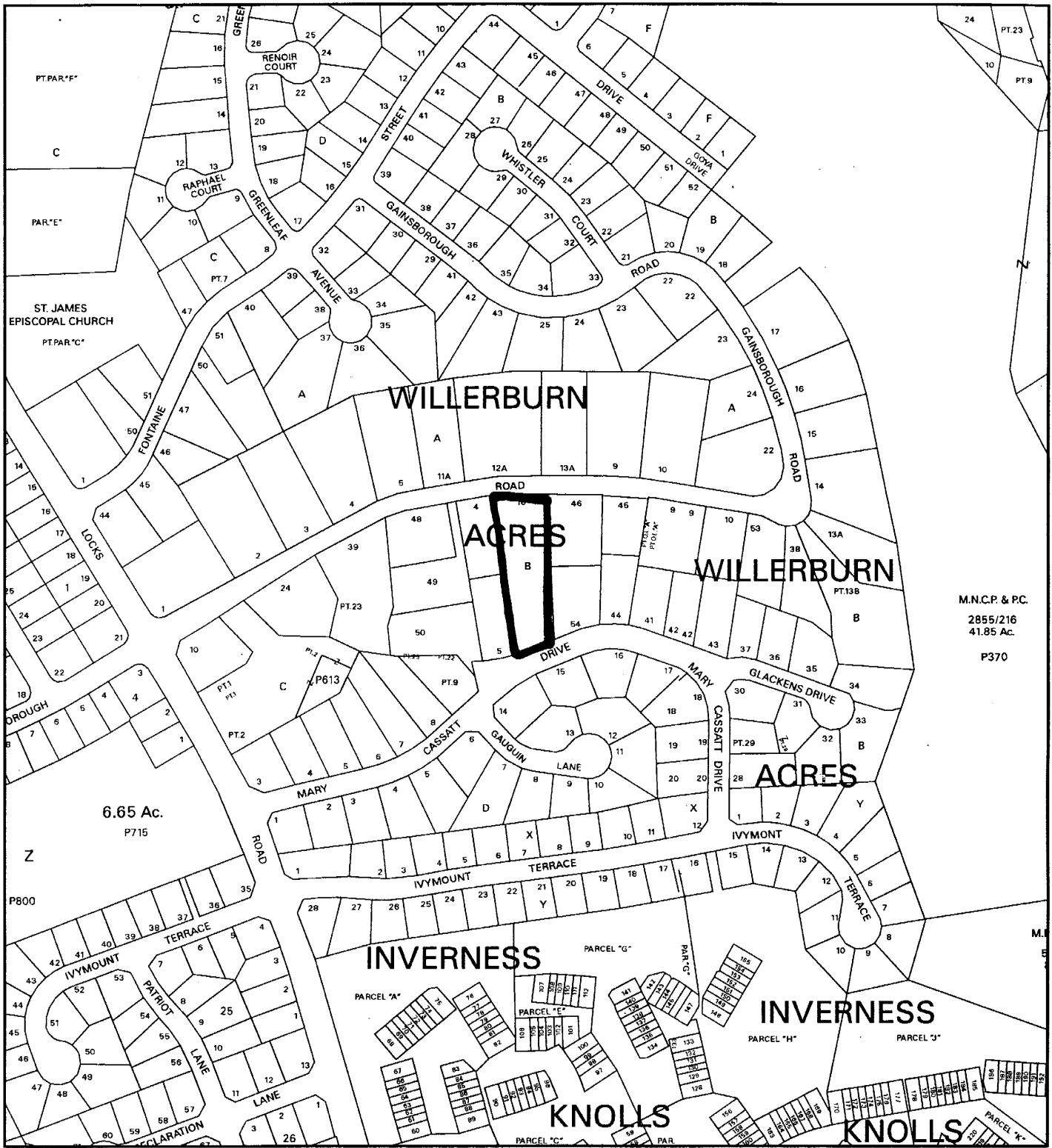
The planimetric, property, and topographic information shown on this map is based on copyrighted Map Products from the Montgomery County Department of Park and Planning of the Maryland -National Capital Park and Planning Commission, and may not be copied or reproduced without written permission from M-NCPPC.

Property lines are compiled by adjusting the property lines to topography created from aerial photography and should not be interpreted as actual field surveys. Planimetric features were compiled from 1:14400 scale aerial photography using stereo photogrammetric methods.

This map is created from a variety of data sources, and may not reflect the most current conditions in any one location and may not be completely accurate or up to date. All map features are approximately within five feet of their true location. This map may not be the same as a map of the same area plotted at an earlier time as the data is continuously updated. Use of this map, other than for general planning purposes is not recommended. - Copyright 1998



WILLERBURN ESTATES (1-05073)



M.N.C.P. & P.C.
2855/216
41.85 Ac.
P370

Map compiled on March 15, 2005 at 10:26 AM | Site located on base sheet no - 215NW08

NOTICE

The planimetric, property, and topographic information shown on this map is based on copyrighted Map Products from the Montgomery County Department of Park and Planning of the Maryland-National Capital Park and Planning Commission, and may not be copied or reproduced without written permission from M-NCPPC.

Property lines are compiled by adjusting the property lines to topography created from aerial photography and should not be interpreted as actual field surveys. Planimetric features were compiled from 1:14400 scale aerial photography using stereo photogrammetric methods.

This map is created from a variety of data sources, and may not reflect the most current conditions in any one location and may not be completely accurate or up to date. All map features are approximately within five feet of their true location. This map may not be the same as a map of the same area plotted at an earlier time as the data is continuously updated. Use of this map, other than for general planning purposes is not recommended. - Copyright 1998

