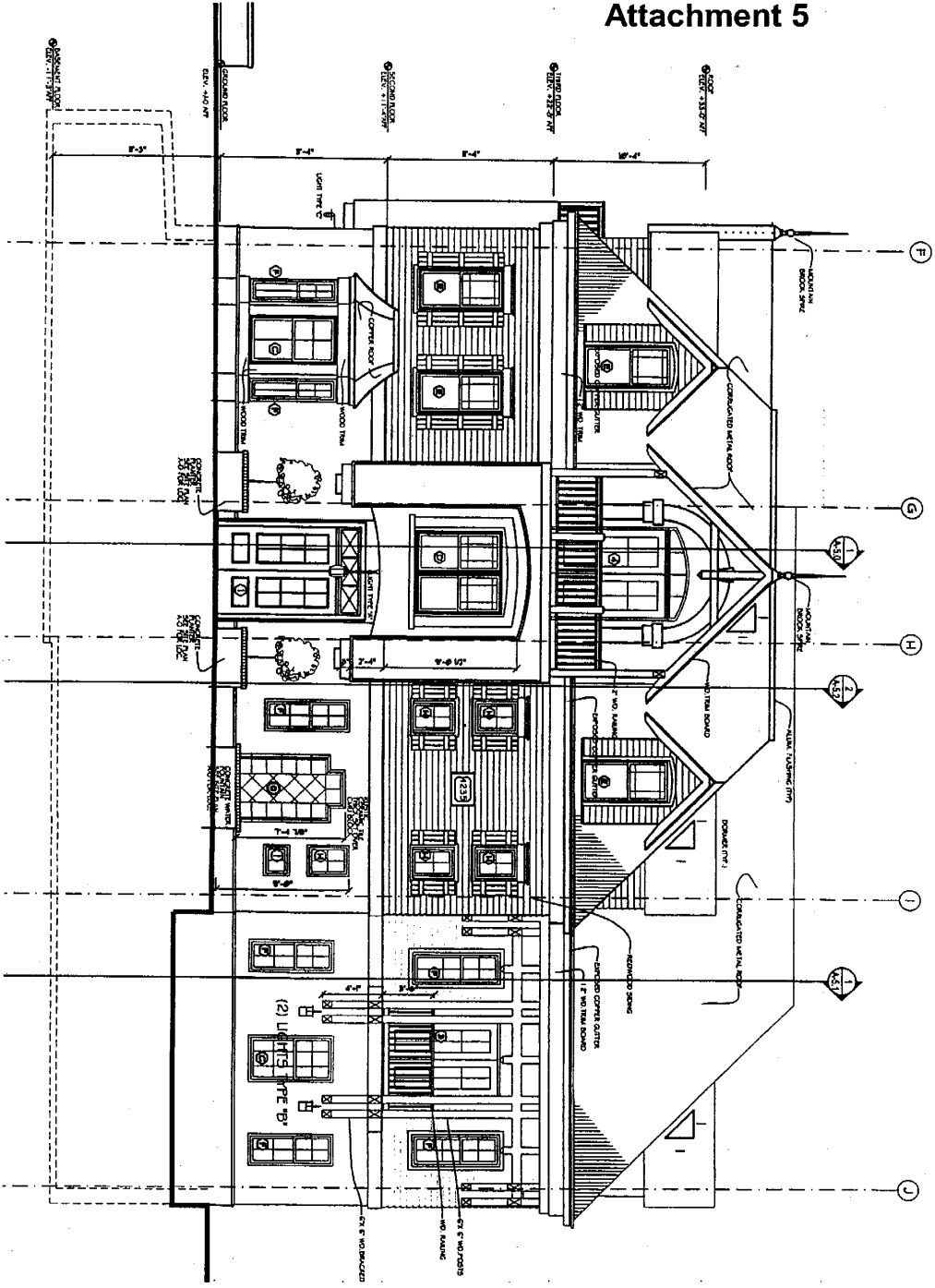


Attachment 5

HP
STEPHAN



FRONT (SOUTH) ELEVATION

INTERPLAN
Incorporated
5185 Macdonald Boulevard, NW - Suite 200 Washington, DC 20016-3341
L 202.262.5300 F 202.688.5873
www.interplan.com

REFERENCE MONTGOMERY COUNTY CODE
CHAPTER 59, DIVISION 59-C-1.3

4707 WEST VIRGINIA AVENUE
BETHESDA, MARYLAND 20914

ELEVATION
SCALE: 1/8" = 1'-0"

OCT. 27, 2004

JOB # 02-2165

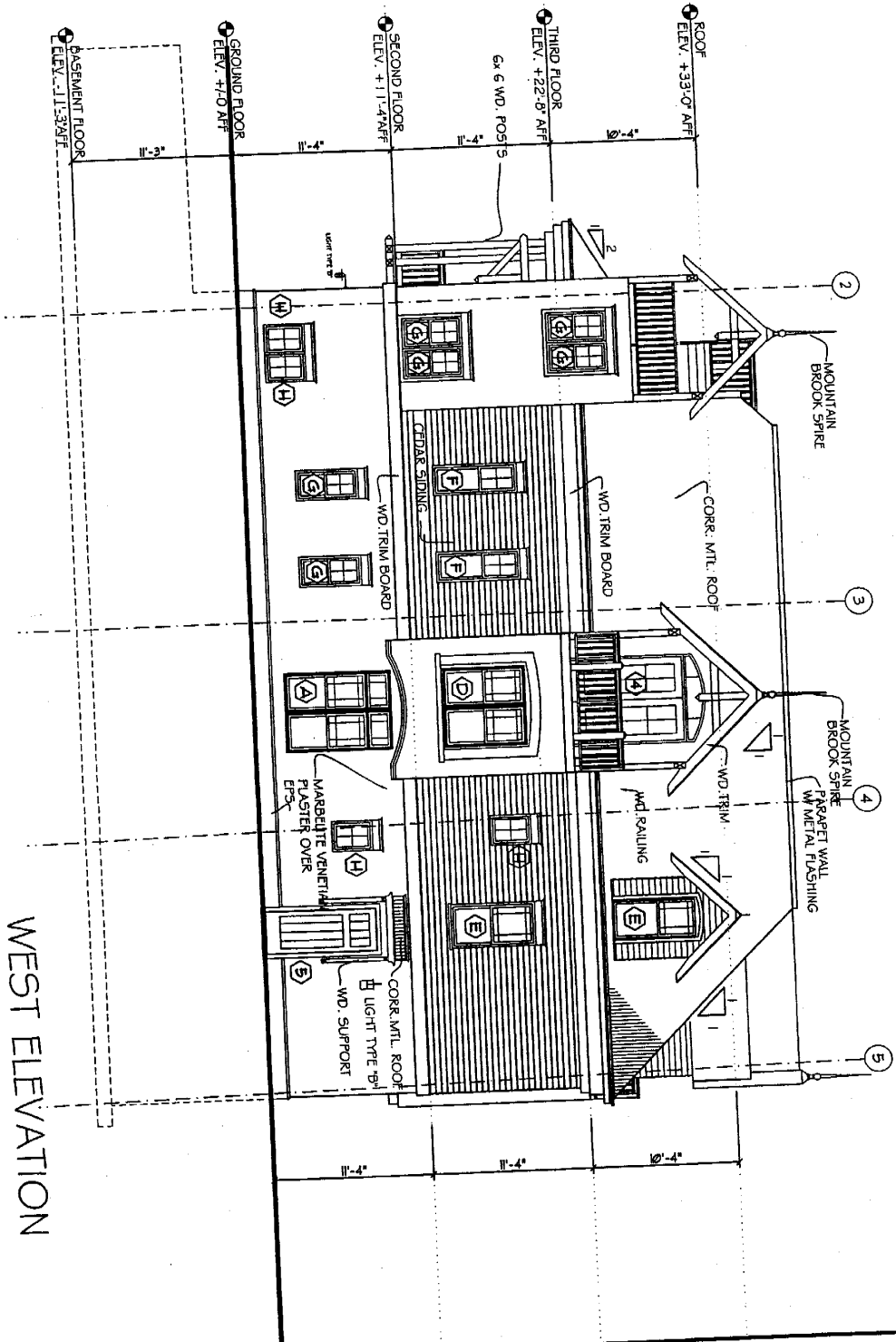
A-6



4707 WEST VIRGINIA AVENUE
LOTS # 18, 19 AND 20
BETHESDA, MARYLAND 20914

SPECIAL EXCEPTION

Exhibit 'T'



WEST ELEVATION

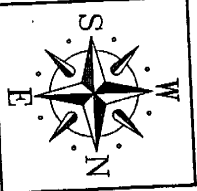
INTERPLAN
Incorporated

11615 Montclair Boulevard, NW, Suite 200
Washington, DC 20015-3241
1.202.292.5300
www.interplan.com

REFERENCE MONTGOMERY COUNTY CODE
CHAPTER 59, DIVISION 59-C-1.3

4707 WEST VIRGINIA AVENUE
BETHESDA, MARYLAND 20814

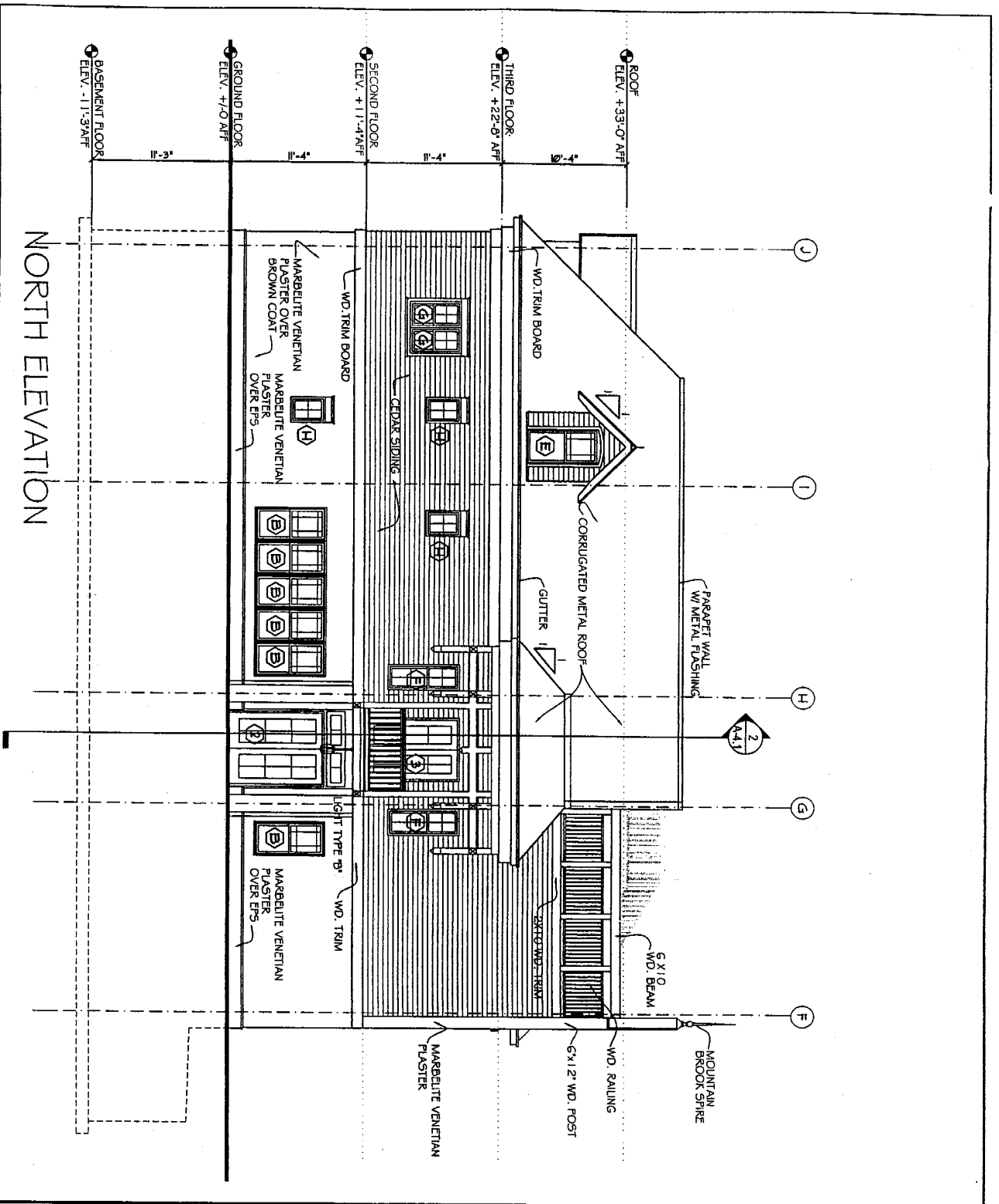
WEST ELEVATION
SCALE: 1/8" = 1'-0"



OCT. 27, 2004
JOB # 02-2165
A-7

4707 WEST VIRGINIA AVENUE
LOTS #18, 19 AND 20
BETHESDA, MARYLAND 20814
SPECIAL EXCEPTION

Exhibit



NORTH ELEVATION

INTERPLAN
Incorporated

5185 MacArthur Boulevard, NW - Suite 200 Washington, DC 20016-3341
 1.202.262.5300 1.202.686.9273 www.interplaninc.com

REFERENCE MONTGOMERY COUNTY CODE
 CHAPTER 59, DIVISION 59-C-1.3

4707 WEST VIRGINIA AVENUE
 BETHESDA, MARYLAND 20814

NORTH ELEVATION
 SCALE: 1/8" = 1'-0"

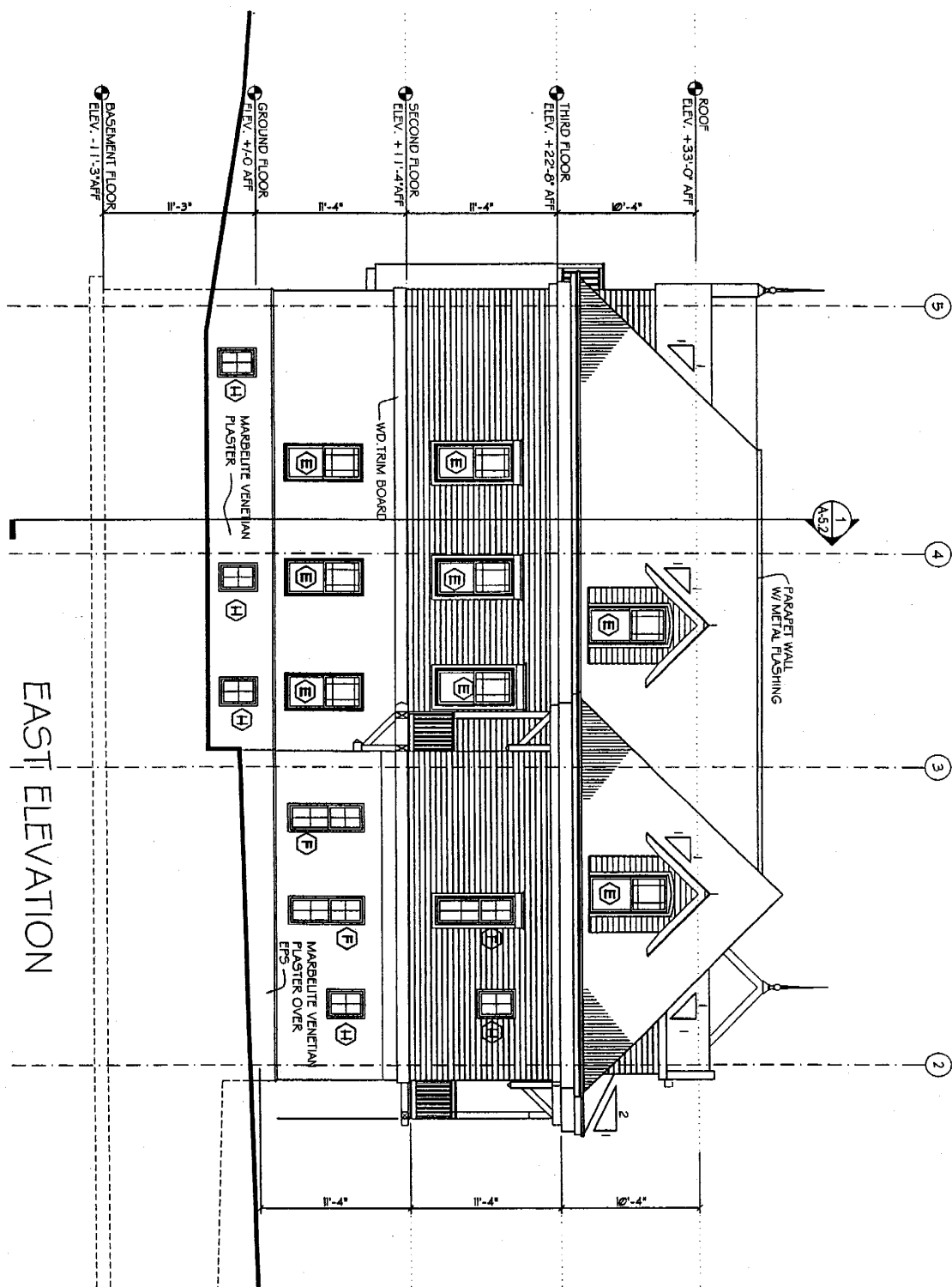
OCT. 27, 2004

JOB # 02-2165

A-8

4707 WEST VIRGINIA AVENUE
 LOTS # 18, 19 AND 20
 BETHESDA, MARYLAND 20814

SPECIAL EXCEPTION



EAST ELEVATION

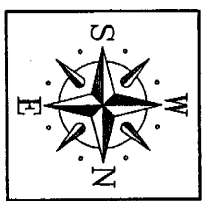
INTERPLAN
Incorporated

5155 Nicholson Boulevard, NW - Suite 200 Washington, DC 20016-3344
 1.202.582.5300 1.202.586.5273 www.interplaninc.com

REFERENCE MONTGOMERY COUNTY CODE
 CHAPTER 59, DIVISION 59-C-1.3

4707 WEST VIRGINIA AVENUE
 BETHESDA, MARYLAND 20814

EAST ELEVATION
 SCALE: 1/8" = 1'-0"



OCT. 27, 2004
 JOB # 02-2165
A-9

4707 WEST VIRGINIA AVENUE
 LOTS # 18, 19 AND 20
 BETHESDA, MARYLAND 20814
 SPECIAL EXCEPTION