

ALTA VISTA (1-05075)



Map compiled on April 04, 2005 at 1:40 PM | Site located on base sheet no - 211NW05

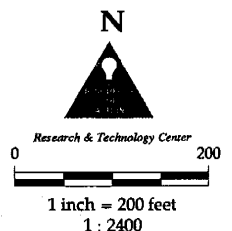
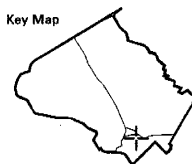
NOTICE

The planimetric, property, and topographic information shown on this map is based on copyrighted Map Products from the Montgomery County Department of Park and Planning of the Maryland -National Capital Park and Planning Commission, and may not be copied or reproduced without written permission from M-NCPPC.

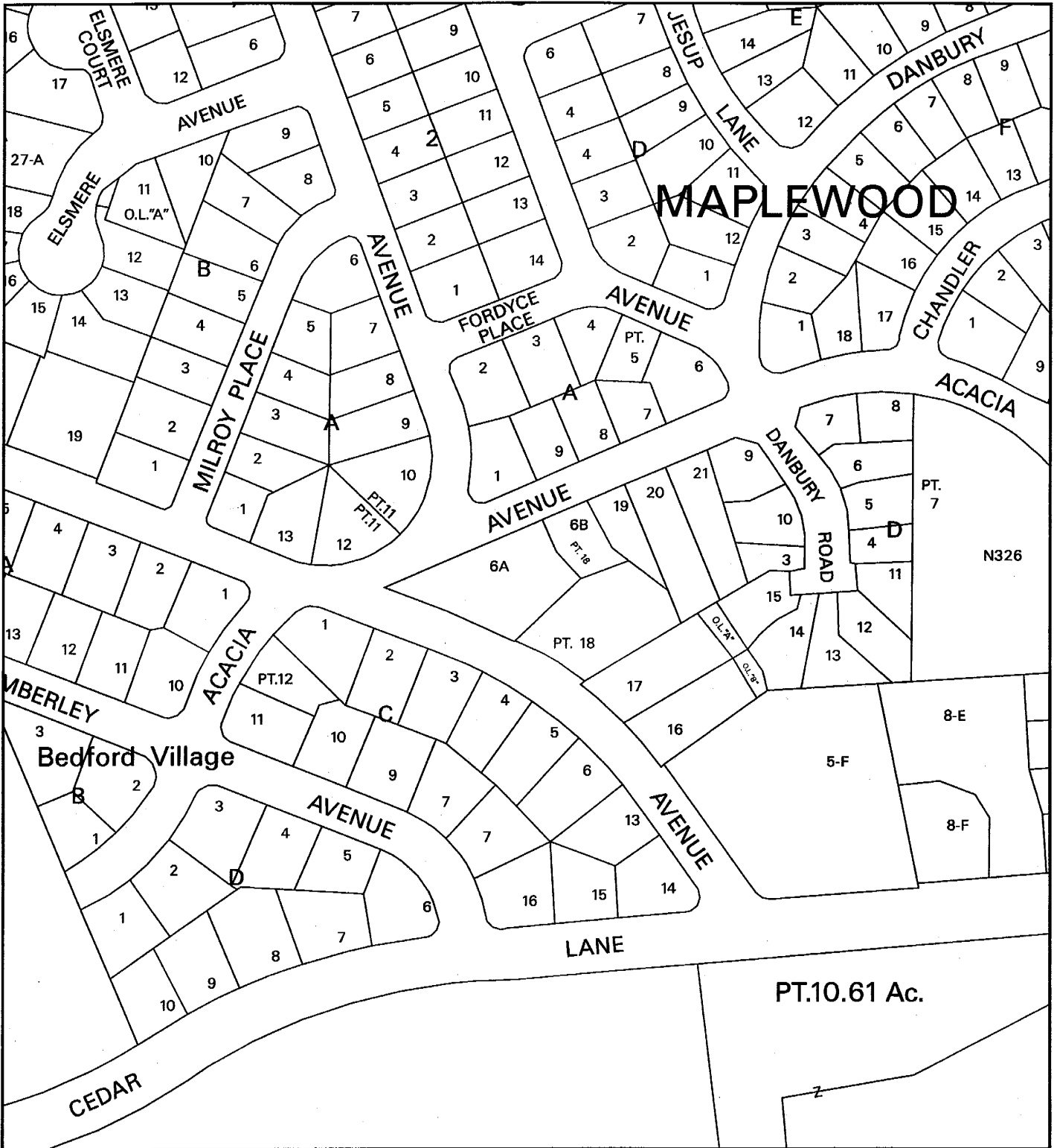
Property lines are compiled by adjusting the property lines to topography created from aerial photography and should not be interpreted as actual field surveys. Planimetric features were compiled from 1:14400 scale aerial photography using stereo photogrammetric methods.

This map is created from a variety of data sources, and may not reflect the most current conditions in any one location and may not be completely accurate or up to date. All map features are approximately within five feet of their true location. This map may not be the same as a map of the same area plotted at an earlier time as the data is continuously updated. Use of this map, other than for general planning purposes is not recommended. - Copyright 1998

Key Map



ALTA VISTA (1-05075)



Map compiled on April 04, 2005 at 1:42 PM | Site located on base sheet no - 211NW05

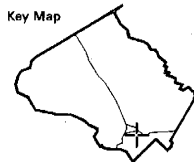
NOTICE

The planimetric, property, and topographic information shown on this map is based on copyrighted Map Products from the Montgomery County Department of Park and Planning of the Maryland - National Capital Park and Planning Commission, and may not be copied or reproduced without written permission from M-NCPPC.

Property lines are compiled by adjusting the property lines to topography created from aerial photography and should not be interpreted as actual field surveys. Planimetric features were compiled from 1:14400 scale aerial photography using stereo photogrammetric methods.

This map is created from a variety of data sources, and may not reflect the most current conditions in any one location and may not be completely accurate or up to date. All map features are approximately within five feet of their true location. This map may not be the same as a map of the same area plotted at an earlier time as the data is continuously updated. Use of this map, other than for general planning purposes is not recommended. - Copyright 1998

Key Map



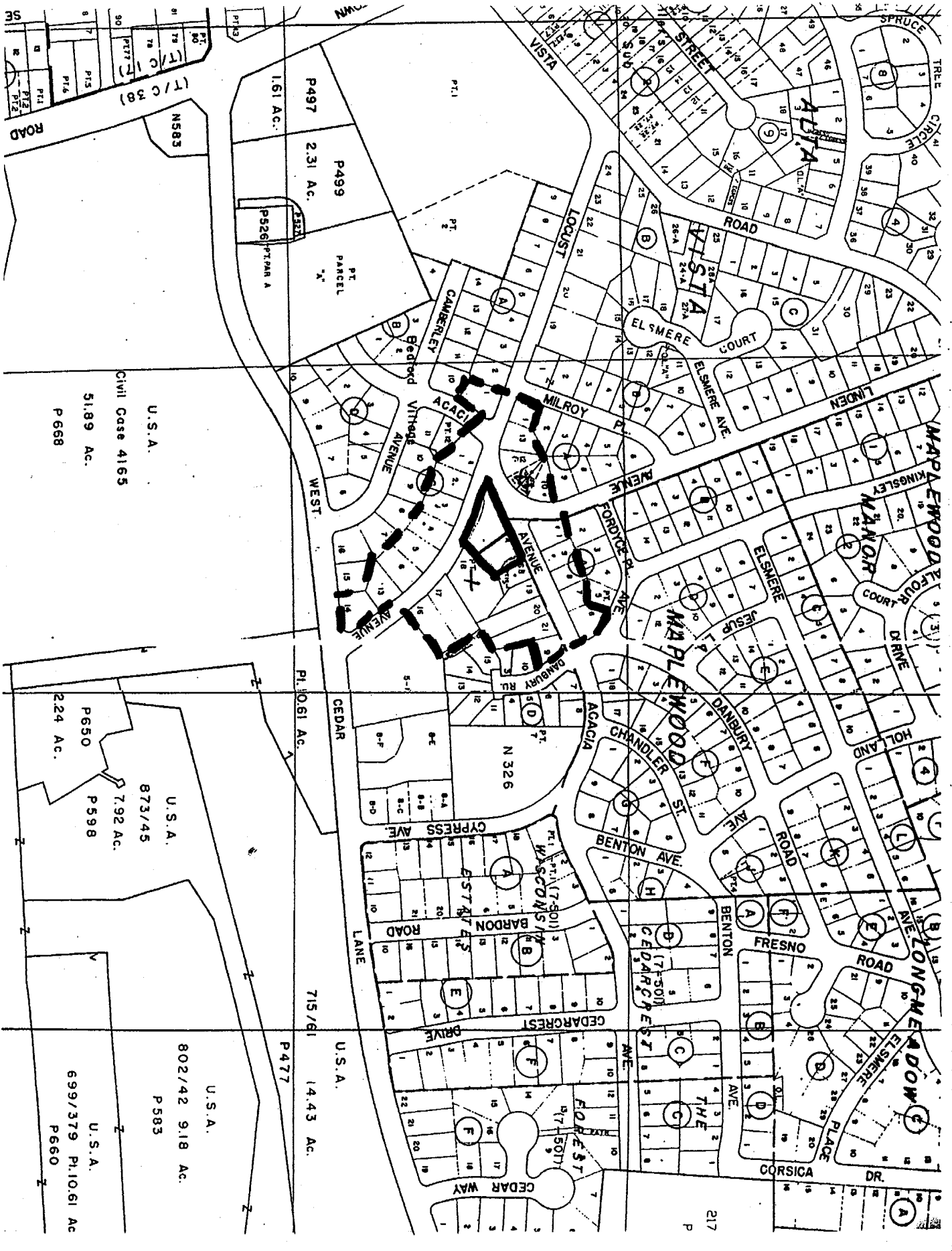
N



Research & Technology Center



1 inch = 200 feet
1 : 2400



RE-SUBDIVISION CHART
 JOB NAME: Alta Vista
 MHG JOB NUMBER: 2004.316
 DATE: 3.03.05

ATTACHMENT D

Data Table

SUBDIVISION	Lot/Block	FRONTAGE	SIZE	BUILDABLE AREA	WIDTH @ BRL	SHAPE	ALIGNMENT
Alta Vista	1/A	80.18	8,861	2,200	85.00	Irregular	Corner lot
	9/A	65.00	6,552	2,585	65.00	Rectangular	Perpendicular
	8/A	65.00	6,400	2,457	65.00	Rectangular	Perpendicular
	7/A	70.00	5,743	1,400	70.00	Irregular	Perpendicular
	6/A	65.00	6,352	1,410	65.00	Irregular	Corner lot
	9/D	68.55	6,307	1,696	72.00	Irregular	Corner lot
	21/D	73.59	11,821	5,675	69.00	Irregular	Perpendicular
	20/D	60.00	13,142	6,800	60.00	Rectangular	Perpendicular
	19/D	63.01	8,096	3,625	60.00	Irregular	Perpendicular
	6-B/D	65.00	5,421	2,252	65.00	Irregular	Perpendicular
	17/D	83.63	15,024	8,600	78.00	Rectangular	Angular
	16/D	82.34	12,748	7,075	76.00	Rectangular	Perpendicular
	10/A	95.00	7,057	2,500	71.00	Triangular	Radial
	12/A	95.00	7,063	2,295	70.00	Triangular	Radial
	13/A	74.88	6,887	2,541	69.63	Irregular	Radial
Bedford Village	1/C	86.00	9,808	3,775	113.00	Irregular	Perpendicular
	2/C	80.00	8,823	4,000	80.00	Rectangular	Perpendicular
	3/C	80.00	8,422	4,000	77.00	Irregular	Perpendicular
	4/C	84.00	8,651	3,975	77.00	Irregular	Radial
	5/C	84.00	9,120	4,200	77.00	Irregular	Radial
	6/C	85.00	9,559	4,400	77.00	Irregular	Radial
	14/C	96.81	11,490	2,938	116.10	Irregular	Corner
	13/C	88.42	8,631	3,567	87.57	Irregular	Perpendicular
	1/A	90.00	9,123	2,606	117.50	Irregular	Corner lot
Proposed Lot	22	91.00	8,132	3,400	81.00	Irregular	Perpendicular
Proposed Lot	23	124.00	13,664	4,500	130.00	Irregular	Corner lot

Rank By Frontage

SUBDIVISION	Lot/Block	FRONTAGE	SIZE	BUILDABLE AREA	WIDTH @ BRL	SHAPE	ALIGNMENT
	20/D	60.00	13,142	6,800	60.00	Rectangular	Perpendicular
	19/D	63.01	8,096	3,625	60.00	Irregular	Perpendicular
	9/A	65.00	6,552	2,585	65.00	Rectangular	Perpendicular
	8/A	65.00	6,400	2,457	65.00	Rectangular	Perpendicular
	6/A	65.00	6,352	1,410	65.00	Irregular	Corner lot
	6-B/D	65.00	5,421	2,252	65.00	Irregular	Perpendicular
	9/D	68.55	6,307	1,696	72.00	Irregular	Corner lot
	7/A	70.00	5,743	1,400	70.00	Irregular	Perpendicular
	21/D	73.59	11,821	5,675	69.00	Irregular	Perpendicular
	13/A	74.88	6,887	2,541	69.63	Irregular	Radial
	2/C	80.00	8,823	4,000	80.00	Rectangular	Perpendicular
	3/C	80.00	8,422	4,000	77.00	Irregular	Perpendicular
	1/A	80.18	8,861	2,200	85.00	Irregular	Corner lot
	16/D	82.34	12,748	7,075	76.00	Rectangular	Perpendicular
	17/D	83.63	15,024	8,600	78.00	Rectangular	Angular
	4/C	84.00	8,651	3,975	77.00	Irregular	Radial
	5/C	84.00	9,120	4,200	77.00	Irregular	Radial
	6/C	85.00	9,559	4,400	77.00	Irregular	Radial
	1/C	86.00	9,808	3,775	113.00	Irregular	Perpendicular
	13/C	88.42	8,631	3,567	87.57	Irregular	Perpendicular
	1/A	90.00	9,123	2,606	117.50	Irregular	Corner lot
	22	91.00	8,132	3,400	81.00	Irregular	Perpendicular
	10/A	95.00	7,057	2,500	71.00	Triangular	Radial
	12/A	95.00	7,063	2,295	70.00	Triangular	Radial
	14/C	96.81	11,490	2,938	116.10	Irregular	Corner
	23	124.00	13,664	4,500	130.00	Irregular	Corner lot

Rank By Buildable Size

SUBDIVISION	Lot/Block	FRONTAGE	SIZE	BUILDABLE AREA	WIDTH @ BRL	SHAPE	ALIGNMENT
	6-B/D	65.00	5,421	2,252	65.00	Irregular	Perpendicular
	7/A	70.00	5,743	1,400	70.00	Irregular	Perpendicular
	9/D	68.55	6,307	1,696	72.00	Irregular	Corner lot
	6/A	65.00	6,352	1,410	65.00	Irregular	Corner lot
	8/A	65.00	6,400	2,457	65.00	Rectangular	Perpendicular
	9/A	65.00	6,552	2,585	65.00	Rectangular	Perpendicular
	13/A	74.88	6,887	2,541	69.63	Irregular	Radial
	10/A	95.00	7,057	2,500	71.00	Triangular	Radial
	12/A	95.00	7,063	2,295	70.00	Triangular	Radial
	19/D	63.01	8,096	3,625	60.00	Irregular	Perpendicular
	22	91.00	8,132	3,400	81.00	Irregular	Perpendicular
	3/C	80.00	8,422	4,000	77.00	Irregular	Perpendicular
	13/C	88.42	8,631	3,567	87.57	Irregular	Perpendicular
	4/C	84.00	8,651	3,975	77.00	Irregular	Radial
	2/C	80.00	8,823	4,000	80.00	Rectangular	Perpendicular
	1/A	80.18	8,861	2,200	85.00	Irregular	Corner lot
	5/C	84.00	9,120	4,200	77.00	Irregular	Radial
	1/A	90.00	9,123	2,606	117.50	Irregular	Corner lot
	6/C	85.00	9,559	4,400	77.00	Irregular	Radial
	1/C	86.00	9,808	3,775	113.00	Irregular	Perpendicular
	14/C	96.81	11,490	2,938	116.10	Irregular	Corner
	21/D	73.59	11,821	5,675	69.00	Irregular	Perpendicular
	16/D	82.34	12,748	7,075	76.00	Rectangular	Perpendicular
	20/D	60.00	13,142	6,800	60.00	Rectangular	Perpendicular
	23	124.00	13,664	4,500	130.00	Irregular	Corner lot
	17/D	83.63	15,024	8,600	78.00	Rectangular	Angular

Rank By Buildable Area

SUBDIVISION	Lot/Block	FRONTAGE	SIZE	BUILDABLE AREA	WIDTH @ BRL	SHAPE	ALIGNMENT
	7/A	70.00	5,743	1,400	70.00	Irregular	Perpendicular
	6/A	65.00	6,352	1,410	65.00	Irregular	Corner lot
	9/D	68.55	6,307	1,696	72.00	Polygonal	Corner lot
	1/A	80.18	8,861	2,200	85.00	Irregular	Corner lot
	6-B/D	65.00	5,421	2,252	65.00	Irregular	Perpendicular
	12/A	95.00	7,063	2,295	70.00	Irregular	Radial
	8/A	65.00	6,400	2,457	65.00	Rectangular	Perpendicular
	10/A	95.00	7,057	2,500	71.00	Triangular	Radial
	13/A	74.88	6,887	2,541	69.63	Irregular	Radial
	9/A	65.00	6,552	2,585	65.00	Rectangular	Perpendicular
	1/A	90.00	9,123	2,606	117.50	Irregular	Corner lot
	14/C	96.81	11,490	2,938	116.10	Irregular	Corner
	22	91.00	8,132	3,400	81.00	Irregular	Perpendicular
	13/C	88.42	8,631	3,567	87.57	Irregular	Perpendicular
	19/D	63.01	8,096	3,625	60.00	Irregular	Perpendicular
	1/C	86.00	9,808	3,775	113.00	Irregular	Perpendicular
	4/C	84.00	8,651	3,975	77.00	Irregular	Radial
	2/C	80.00	8,823	4,000	80.00	Rectangular	Perpendicular
	3/C	80.00	8,422	4,000	77.00	Irregular	Perpendicular
	5/C	84.00	9,120	4,200	77.00	Irregular	Radial
	6/C	85.00	9,559	4,400	77.00	Irregular	Radial
	23	124.00	13,664	4,500	130.00	Irregular	Corner lot
	21/D	73.59	11,821	5,675	69.00	Irregular	Perpendicular
	20/D	60.00	13,142	6,800	60.00	Rectangular	Perpendicular
	16/D	82.34	12,748	7,075	76.00	Rectangular	Perpendicular
	17/D	83.63	15,024	8,600	78.00	Rectangular	Angular