

850 Hungerford Drive • Rockville, Maryland • 20850-1747

Telephone (301) 279-3381

December 27, 2004

RECEIVED
1924
DEC 28 2004

OFFICE OF THE CHAIRMAN
THE MARYLAND NATIONAL CAPITAL
PARK AND PLANNING COMMISSION

Mr. Derick P. Berlage, Chairman
Montgomery County Planning Board
8787 Georgia Avenue
Silver Spring, Maryland 20901

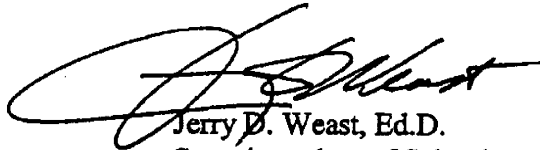
Dear Mr. *Derick* Berlage:

On December 15, 2004, the Montgomery County Telecommunications Transmission Facilities Coordinating Group approved the enclosed application of Nextel Communications (Nextel) to replace a light pole with a monopole to illuminate the tennis courts at our Thomas W. Pyle Middle School site.

In accordance with our Board of Education's Policy ECN, *Telecommunications Transmission Facilities*, I am transmitting this application for your review under the mandatory referral process. Ms. Hillorie S. Morrison of Nextel (1-443-570-0014) will be providing your staff with all necessary technical information.

If your staff needs more information, please have them contact Mr. Patrick R. Hanehan, real estate management specialist, Department of Facilities Management, at 301-279-3069 → *3609*.

Respectfully,


Jerry D. Weast, Ed.D.
Superintendent of Schools

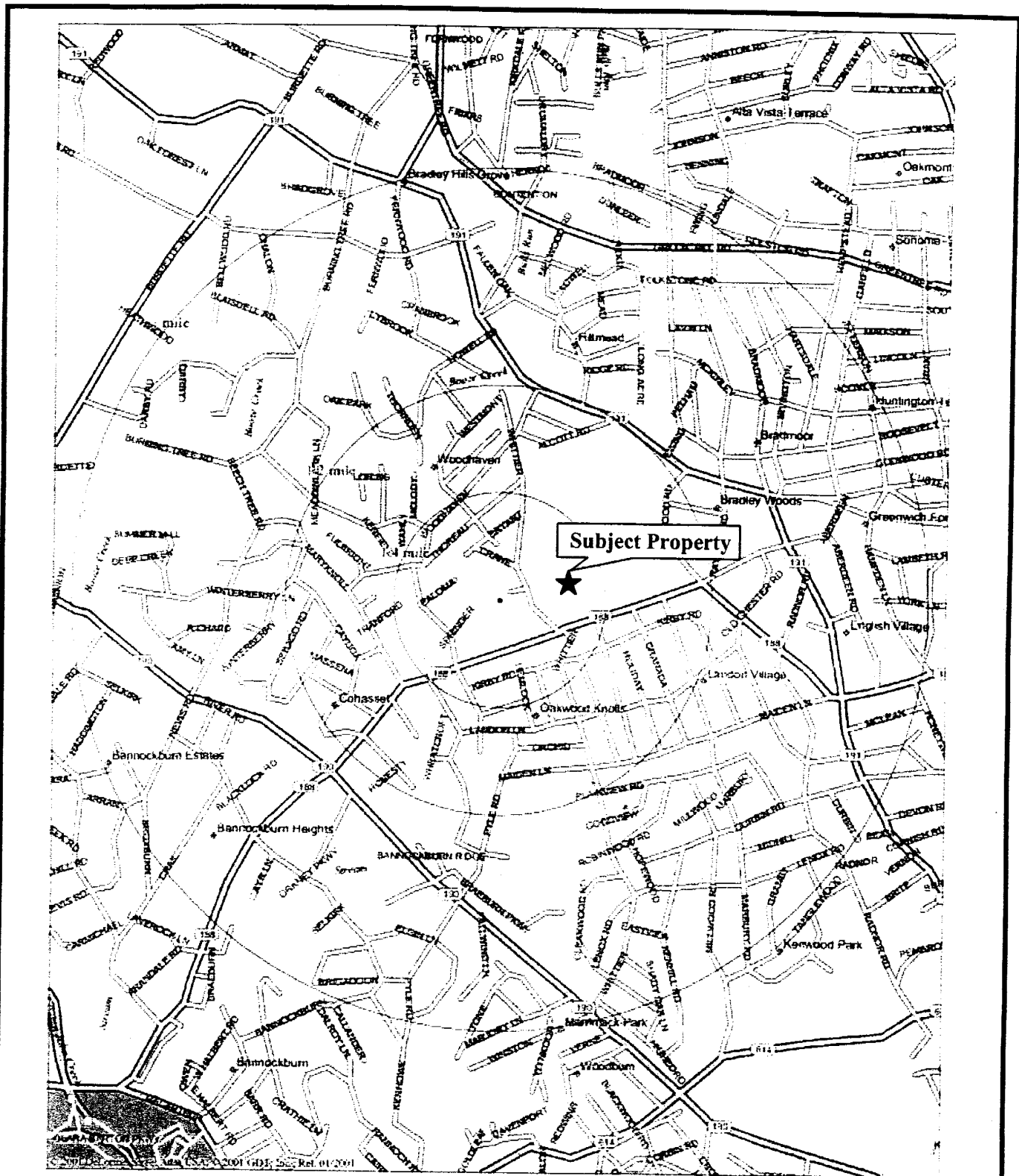
JDW:ph

Enclosure

Copy to:

Members of the Board of Education
Mr. Bowers
Mr. Gilbert
Mr. Hanehan
Mr. Hawes
Ms. Turpin
Mr. Zarchin
Ms. Morrison

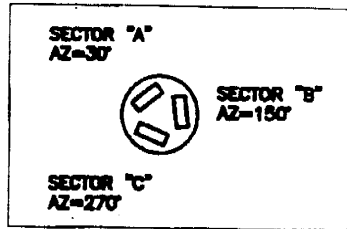
J. E. Management
document & process
Hanehan



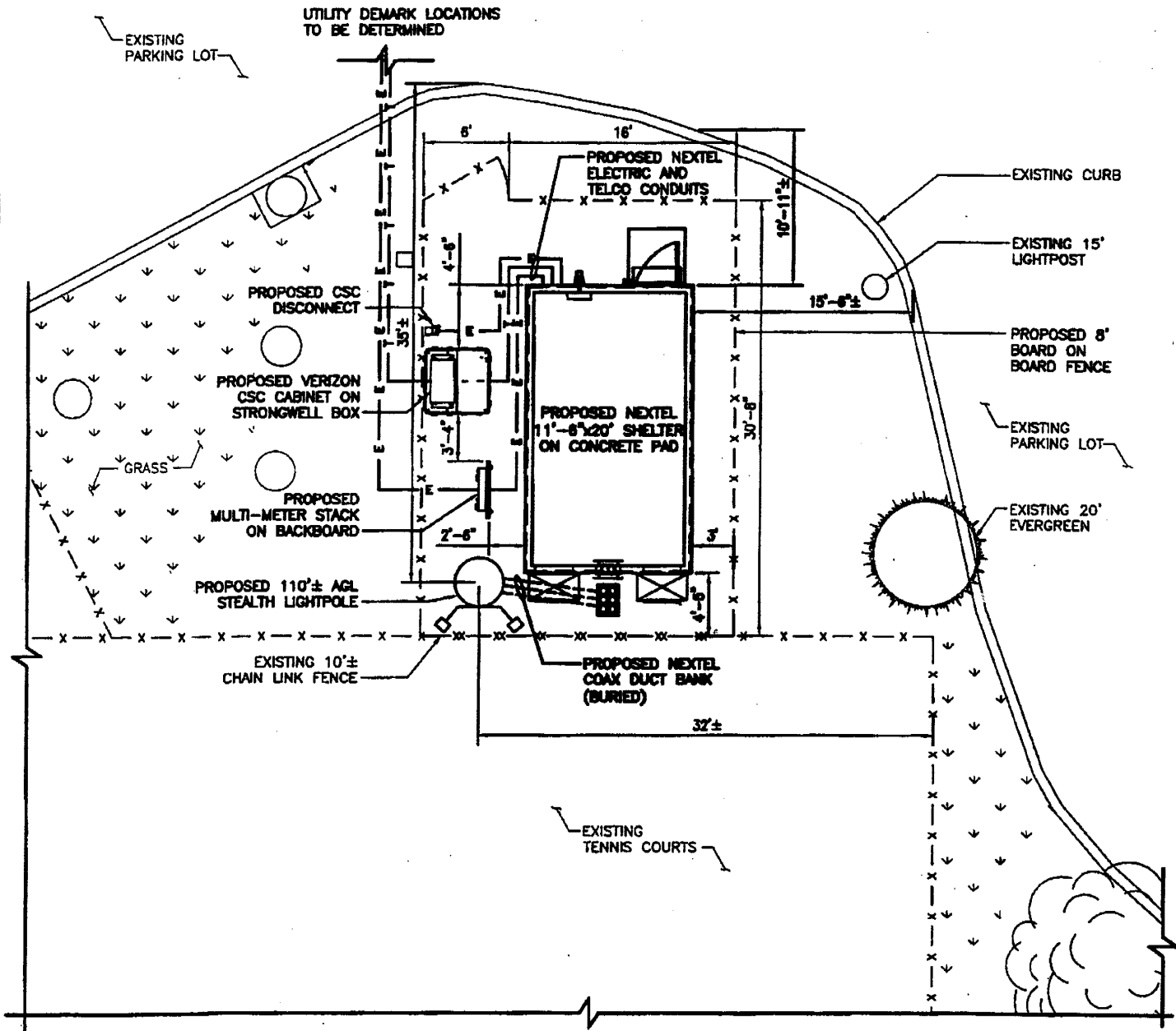
BEACH DRIVE/MD0735A
6301 WILSON LANE
BETHESDA, MD 20817



Figure 1: Location Map



2 ANTENNA ORIENTATION
LE-1 SCALE: NTS



1 SITE PLAN
LE-1 SCALE: NTS

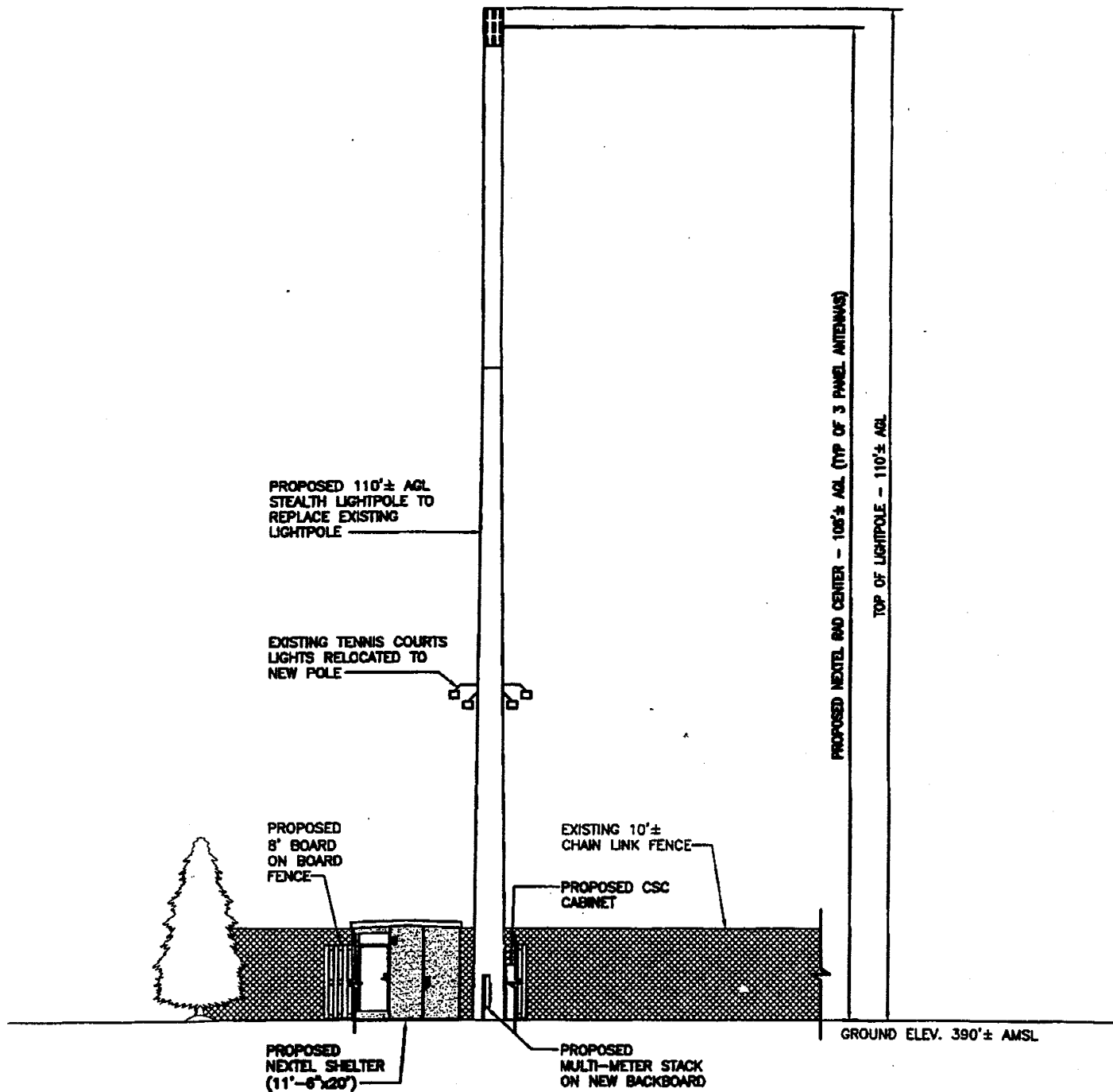
NEXTEL

NEXTEL Communications
of the Mid-Atlantic, Inc.

7050 General Moore Drive, Suite 100
Columbia, MD 21046
PHONE: (410) 983-7400

SUBMITTALS		MD 0735A / BEACH DRIVE	
DATE	REV	THOMAS W PYLE MIDDLE SCHOOL	
5/5/04	0	6301 WILSON LANE	
7/20/04	1	BETHESDA MD 20817	
7/28/04	2	DWG NO.	
11/1/04	3	NX0188-04_LE.DWG	
		SIZE	SHEET
		A	LE-1





1 TOWER ELEVATION
LE-2 SCALE: NTS

NEXTEL

NEXTEL Communications
of the Mid-Atlantic, Inc.

7055 Barnard Morse Drive, Suite 100
Columbia, MD 21046
PHONE: (410) 653-7400

SUBMITTALS	
DATE	REV
5/5/04	0
7/20/04	1
7/28/04	2
11/1/04	3

MD 0735A / BEACH DRIVE
THOMAS W PYLE MIDDLE SCHOOL
6301 WILSON LANE
BETHESDA MD 20817

DWG NO. NXD188-04_LE.DWG

SIZE A SUPPORT ENGINEERING SHEET LE-2