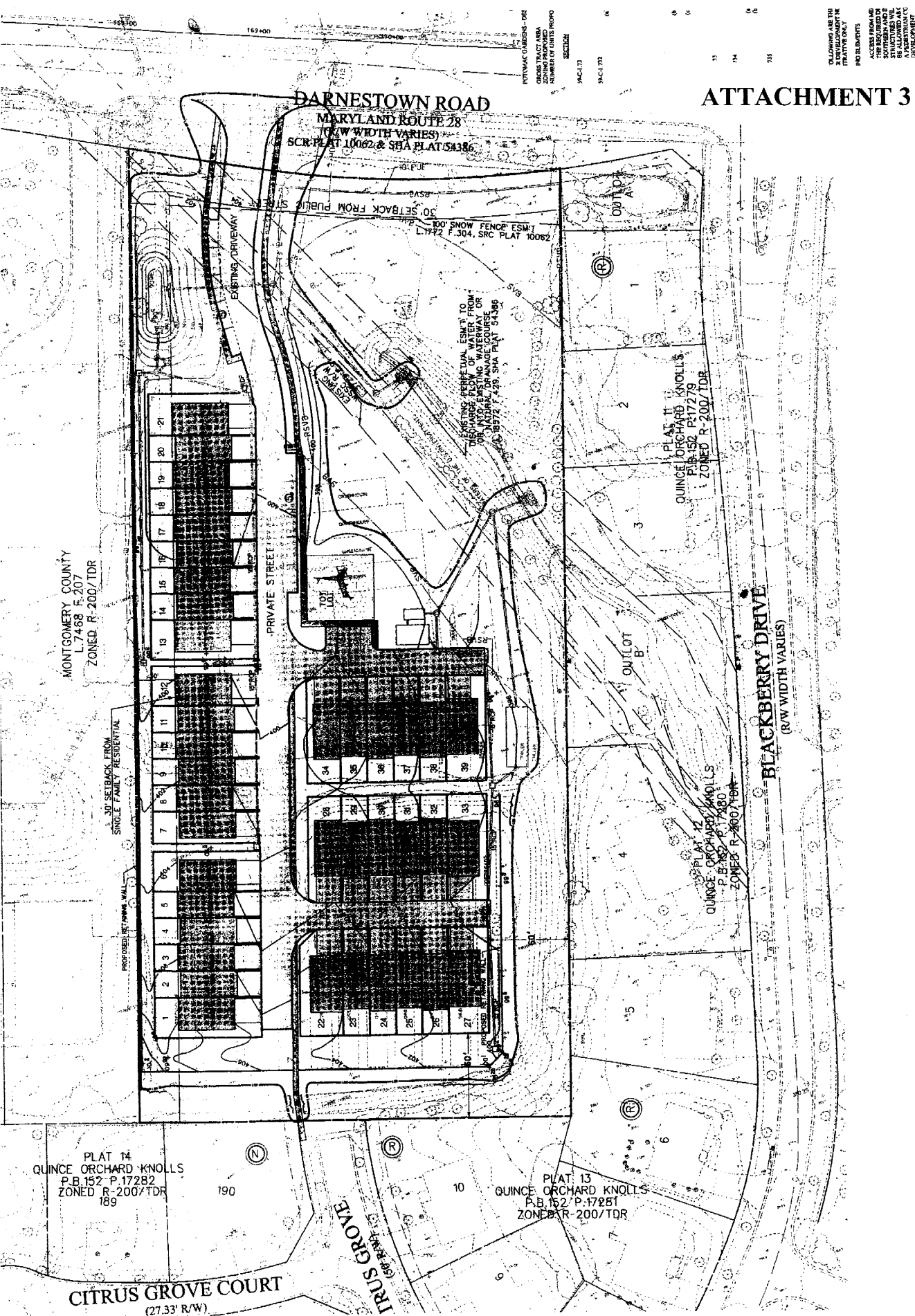


ATTACHMENT 3



SCHEMATIC D

POTOMAC

PR

1

EBER

MONTGOMERY

DARNESTOWN (

OWNER/APPLICANT
 PORTEN COMPANIES, INC.
 ATTN: RAY SOBRINO
 5515 SECURITY LANE SUITE 550
 ROCKVILLE, MD 20852-5003
 301-998-3315

MISS UTILITY NOTE

NO BELIEVERS

ACCESS FROM MD

THE REQUIRED

STRUCTURES

DEVELOPMENT

Rockville

Location

Water

Location

Quantity

www.Landscape.org

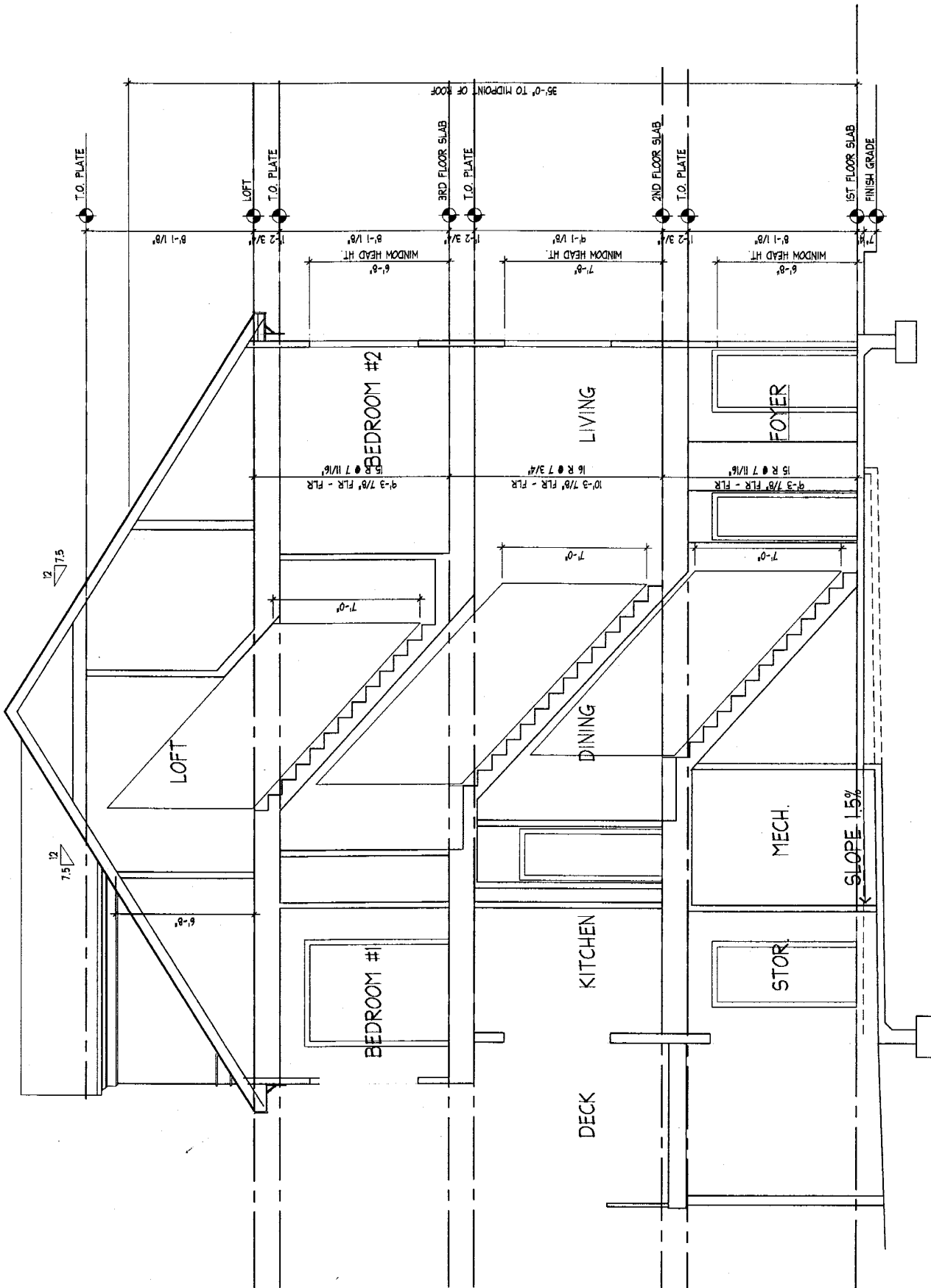
Rockville Office
 1300 Piccard Drive, Suite 100
 Rockville, MD 20850
 T: (301) 948-2790 F: (301) 948-9067

Landmark
 Shiloh Associates, Inc.

Rockville Office
 1300 Piccard Drive, Suite 100
 Rockville, MD 20850
 T: (301) 948-2790 F: (301) 948-9067

www.Landscape.org

3



1 Section- Walk Out Condition

ETON SQUARE

A-300 SCALE: 1/4"=1'-0"
POR.006