

Item #8

M-NCPPC



**MONTGOMERY COUNTY DEPARTMENT OF PARK AND PLANNING**

THE MARYLAND-NATIONAL CAPITAL  
PARK AND PLANNING COMMISSION

8787 Georgia Avenue  
Silver Spring, Maryland 20910-3760  
301-495-4500, www.mncppc.org

M E M O R A N D U M

**DATE:** September 9, 2005

**TO:** Montgomery County Planning Board

**FROM:** Catherine Conlon  
Development Review Division  
(301) 495-4542

**SUBJECT:** Informational Maps for Subdivision Items on the  
Planning Board's Agenda for September 15, 2005.

-----

Attached are copies of plan drawings for item #07, #08, and #09. These subdivision items are scheduled for Planning Board consideration on September 15, 2005. The items are further identified as follows:

Agenda Item #07 - Preliminary Plan 120050930 (formerly 1-05093)  
Clubbs Farm

Agenda Item #08 - Preliminary Plan 120060650 (formerly 1-00065E)  
Panagos Property

Agenda Item #09 - Preliminary Plan 120050900 (formerly- 1-05090)  
Ruppert Nurseries Fall Creek Farm East

Attachment

VICINITY MAP FOR  
**PANAGOS TRACT (1-00065)**



Map compiled on July 18, 2000 at 4:16 PM | Sites located on base sheet no - 214NW08

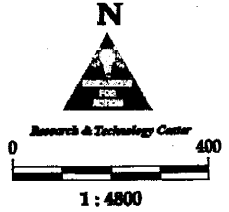
**NOTICE**

The planimetric, property, and topographic information shown on this map is based on copyrighted Map Products from the Montgomery County Department of Park and Planning of the Maryland-National Capital Park and Planning Commission, and may not be copied or reproduced without written permission from M-NCPPC.

Property lines are compiled by adjusting the property lines to topography created from aerial photography and should not be interpreted as actual field surveys. Planimetric features were compiled from 1:14400 scale aerial photography using stereo photogrammetric methods.

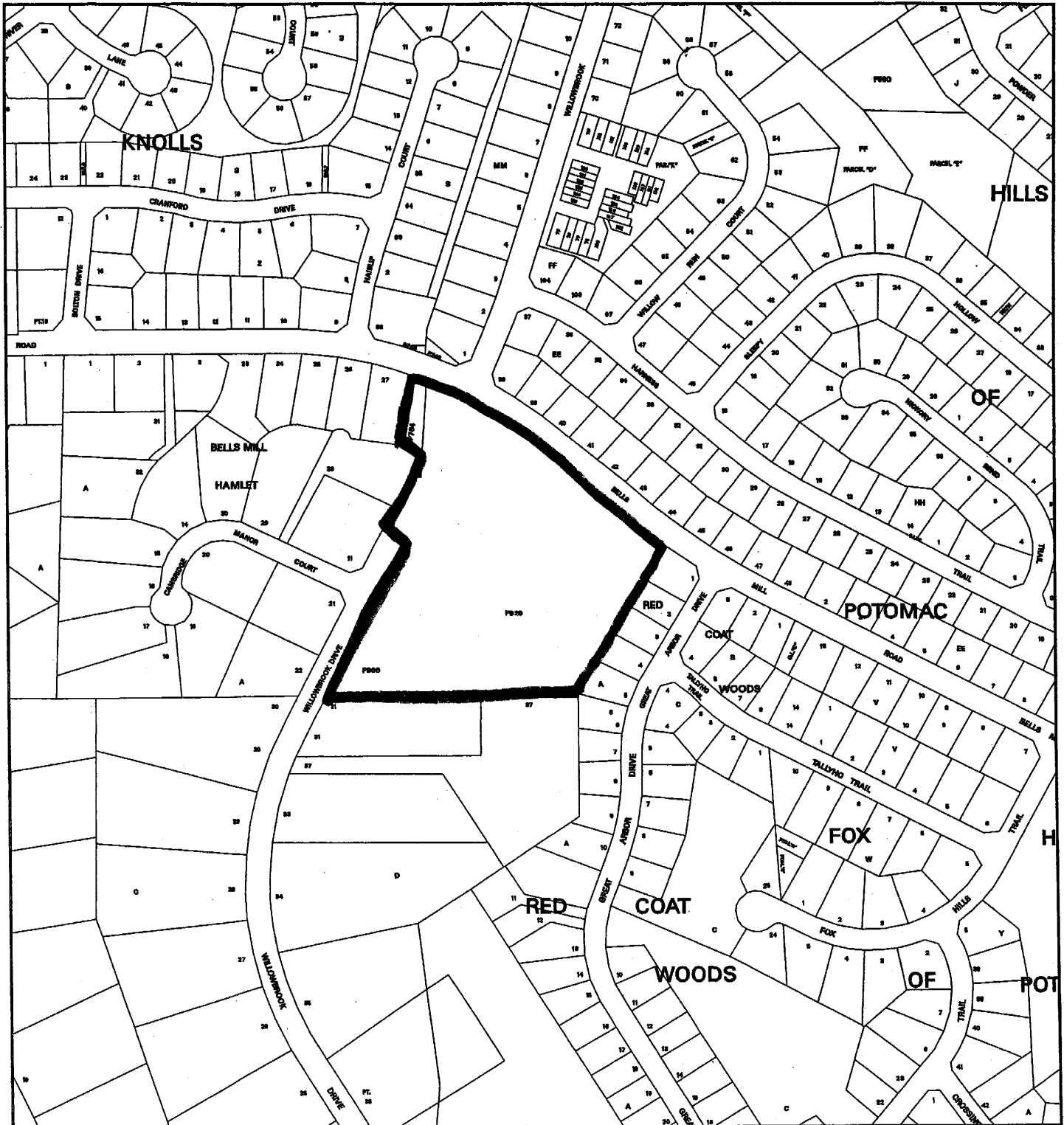
This map is created from a variety of data sources, and may not reflect the most current conditions in any one location and may not be completely accurate or up to date. All map features are approximately within five feet of their true location. This map may not be the same as a map of the same area plotted at an earlier time as the data is continuously updated. Use of this map, other than for general planning purposes is not recommended. - Copyright 1998

Key Map



**MONTGOMERY COUNTY DEPARTMENT OF PARK AND PLANNING**  
 THE MARYLAND-NATIONAL CAPITAL PARK AND PLANNING COMMISSION  
 8787 Georgia Avenue - Silver Spring, Maryland 20910-3790

VICINITY MAP FOR  
**PANAGOS TRACT (1-00065)**



Map compiled on March 03, 2000 at 12:28 PM | Site located on base sheet no - 214NW09

**NOTICE**

The planimetric, property, and topographic information shown on this map is based on copyrighted Map Products from the Montgomery County Department of Park and Planning of the Maryland-National Capital Park and Planning Commission, and may not be copied or reproduced without written permission from M-NCPPC.

Property lines are compiled by adjusting the property lines to topography created from aerial photography and should not be interpreted as actual field surveys. Planimetric features were compiled from 1:14400 scale aerial photography using stereo photogrammetric methods.

This map is created from a variety of data sources, and may not reflect the most current conditions in any one location and may not be completely accurate or up to date. All map features are approximately within five feet of their true location. This map may not be the same as a map of the same area plotted at an earlier time as the data is continuously updated. Use of this map, other than for general planning purposes is not recommended. - Copyright 1998

Key Map



1 : 4800

**MONTGOMERY COUNTY DEPARTMENT OF PARK AND PLANNING**  
 THE MARYLAND-NATIONAL CAPITAL PARK AND PLANNING COMMISSION  
 8787 Georgia Avenue - Silver Spring, Maryland 20910-3760

**GENERAL NOTES**

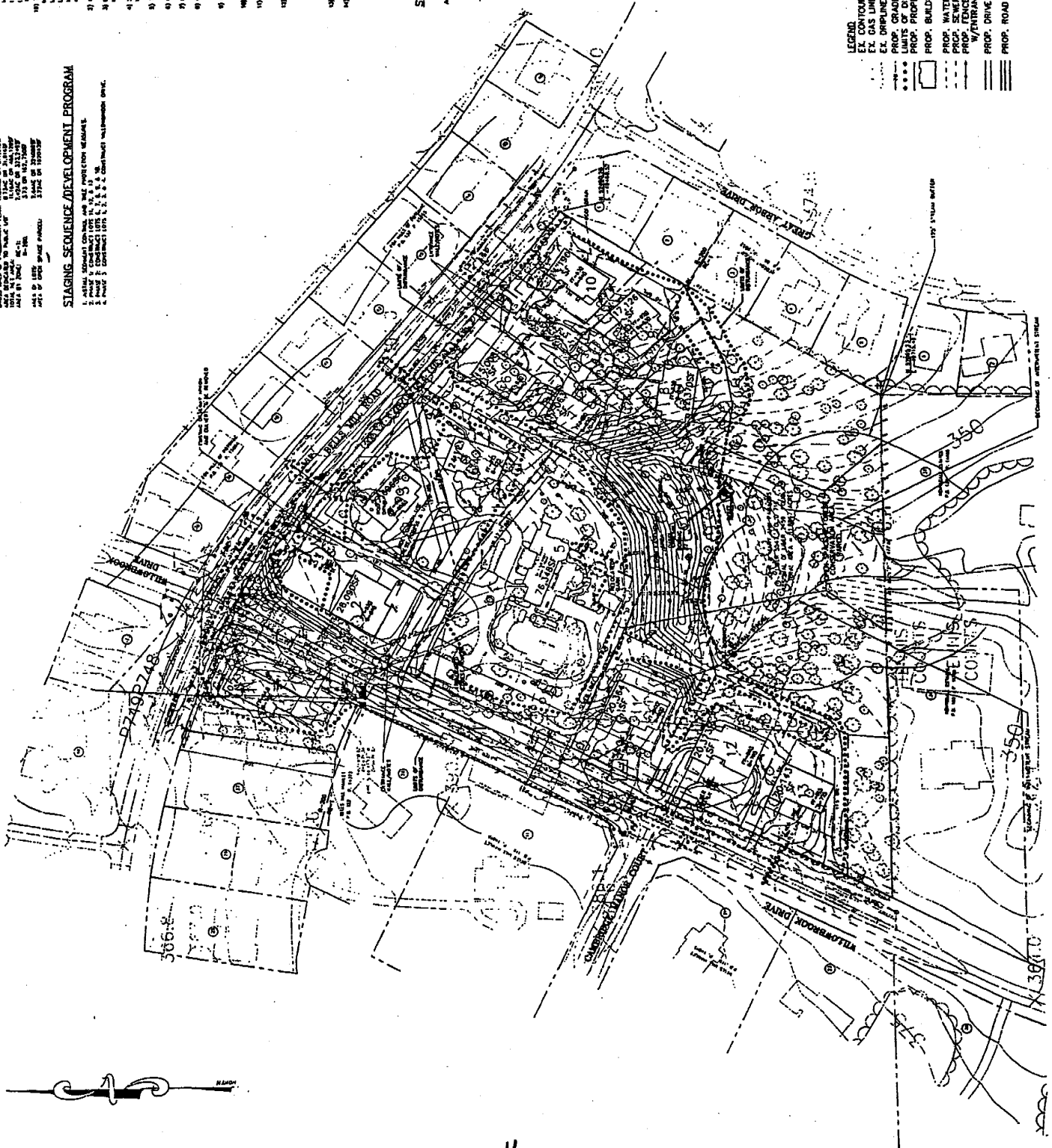
- 1) FOUND: 4-200 COUNTRY
- 2) FOUND: 4-200 COUNTRY
- 3) FOUND: 4-200 COUNTRY
- 4) FOUND: 4-200 COUNTRY
- 5) FOUND: 4-200 COUNTRY
- 6) FOUND: 4-200 COUNTRY
- 7) FOUND: 4-200 COUNTRY
- 8) FOUND: 4-200 COUNTRY
- 9) FOUND: 4-200 COUNTRY
- 10) FOUND: 4-200 COUNTRY
- 11) FOUND: 4-200 COUNTRY
- 12) FOUND: 4-200 COUNTRY
- 13) FOUND: 4-200 COUNTRY
- 14) FOUND: 4-200 COUNTRY
- 15) FOUND: 4-200 COUNTRY
- 16) FOUND: 4-200 COUNTRY
- 17) FOUND: 4-200 COUNTRY
- 18) FOUND: 4-200 COUNTRY
- 19) FOUND: 4-200 COUNTRY
- 20) FOUND: 4-200 COUNTRY
- 21) FOUND: 4-200 COUNTRY
- 22) FOUND: 4-200 COUNTRY
- 23) FOUND: 4-200 COUNTRY
- 24) FOUND: 4-200 COUNTRY
- 25) FOUND: 4-200 COUNTRY
- 26) FOUND: 4-200 COUNTRY
- 27) FOUND: 4-200 COUNTRY
- 28) FOUND: 4-200 COUNTRY
- 29) FOUND: 4-200 COUNTRY
- 30) FOUND: 4-200 COUNTRY
- 31) FOUND: 4-200 COUNTRY
- 32) FOUND: 4-200 COUNTRY
- 33) FOUND: 4-200 COUNTRY
- 34) FOUND: 4-200 COUNTRY
- 35) FOUND: 4-200 COUNTRY
- 36) FOUND: 4-200 COUNTRY
- 37) FOUND: 4-200 COUNTRY
- 38) FOUND: 4-200 COUNTRY
- 39) FOUND: 4-200 COUNTRY
- 40) FOUND: 4-200 COUNTRY
- 41) FOUND: 4-200 COUNTRY
- 42) FOUND: 4-200 COUNTRY
- 43) FOUND: 4-200 COUNTRY
- 44) FOUND: 4-200 COUNTRY
- 45) FOUND: 4-200 COUNTRY
- 46) FOUND: 4-200 COUNTRY
- 47) FOUND: 4-200 COUNTRY
- 48) FOUND: 4-200 COUNTRY
- 49) FOUND: 4-200 COUNTRY
- 50) FOUND: 4-200 COUNTRY

**SITE AREA TABULATION**

1. TOTAL AREA OF DEVELOPMENT IS 100 ACRES
2. TOTAL AREA OF DEVELOPMENT IS 100 ACRES
3. TOTAL AREA OF DEVELOPMENT IS 100 ACRES
4. TOTAL AREA OF DEVELOPMENT IS 100 ACRES
5. TOTAL AREA OF DEVELOPMENT IS 100 ACRES
6. TOTAL AREA OF DEVELOPMENT IS 100 ACRES
7. TOTAL AREA OF DEVELOPMENT IS 100 ACRES
8. TOTAL AREA OF DEVELOPMENT IS 100 ACRES
9. TOTAL AREA OF DEVELOPMENT IS 100 ACRES
10. TOTAL AREA OF DEVELOPMENT IS 100 ACRES
11. TOTAL AREA OF DEVELOPMENT IS 100 ACRES
12. TOTAL AREA OF DEVELOPMENT IS 100 ACRES
13. TOTAL AREA OF DEVELOPMENT IS 100 ACRES
14. TOTAL AREA OF DEVELOPMENT IS 100 ACRES
15. TOTAL AREA OF DEVELOPMENT IS 100 ACRES
16. TOTAL AREA OF DEVELOPMENT IS 100 ACRES
17. TOTAL AREA OF DEVELOPMENT IS 100 ACRES
18. TOTAL AREA OF DEVELOPMENT IS 100 ACRES
19. TOTAL AREA OF DEVELOPMENT IS 100 ACRES
20. TOTAL AREA OF DEVELOPMENT IS 100 ACRES
21. TOTAL AREA OF DEVELOPMENT IS 100 ACRES
22. TOTAL AREA OF DEVELOPMENT IS 100 ACRES
23. TOTAL AREA OF DEVELOPMENT IS 100 ACRES
24. TOTAL AREA OF DEVELOPMENT IS 100 ACRES
25. TOTAL AREA OF DEVELOPMENT IS 100 ACRES
26. TOTAL AREA OF DEVELOPMENT IS 100 ACRES
27. TOTAL AREA OF DEVELOPMENT IS 100 ACRES
28. TOTAL AREA OF DEVELOPMENT IS 100 ACRES
29. TOTAL AREA OF DEVELOPMENT IS 100 ACRES
30. TOTAL AREA OF DEVELOPMENT IS 100 ACRES
31. TOTAL AREA OF DEVELOPMENT IS 100 ACRES
32. TOTAL AREA OF DEVELOPMENT IS 100 ACRES
33. TOTAL AREA OF DEVELOPMENT IS 100 ACRES
34. TOTAL AREA OF DEVELOPMENT IS 100 ACRES
35. TOTAL AREA OF DEVELOPMENT IS 100 ACRES
36. TOTAL AREA OF DEVELOPMENT IS 100 ACRES
37. TOTAL AREA OF DEVELOPMENT IS 100 ACRES
38. TOTAL AREA OF DEVELOPMENT IS 100 ACRES
39. TOTAL AREA OF DEVELOPMENT IS 100 ACRES
40. TOTAL AREA OF DEVELOPMENT IS 100 ACRES
41. TOTAL AREA OF DEVELOPMENT IS 100 ACRES
42. TOTAL AREA OF DEVELOPMENT IS 100 ACRES
43. TOTAL AREA OF DEVELOPMENT IS 100 ACRES
44. TOTAL AREA OF DEVELOPMENT IS 100 ACRES
45. TOTAL AREA OF DEVELOPMENT IS 100 ACRES
46. TOTAL AREA OF DEVELOPMENT IS 100 ACRES
47. TOTAL AREA OF DEVELOPMENT IS 100 ACRES
48. TOTAL AREA OF DEVELOPMENT IS 100 ACRES
49. TOTAL AREA OF DEVELOPMENT IS 100 ACRES
50. TOTAL AREA OF DEVELOPMENT IS 100 ACRES

**STAGING SEQUENCE DEVELOPMENT PROGRAM**

1. STAGING SEQUENCE DEVELOPMENT PROGRAM
2. STAGING SEQUENCE DEVELOPMENT PROGRAM
3. STAGING SEQUENCE DEVELOPMENT PROGRAM
4. STAGING SEQUENCE DEVELOPMENT PROGRAM
5. STAGING SEQUENCE DEVELOPMENT PROGRAM
6. STAGING SEQUENCE DEVELOPMENT PROGRAM
7. STAGING SEQUENCE DEVELOPMENT PROGRAM
8. STAGING SEQUENCE DEVELOPMENT PROGRAM
9. STAGING SEQUENCE DEVELOPMENT PROGRAM
10. STAGING SEQUENCE DEVELOPMENT PROGRAM
11. STAGING SEQUENCE DEVELOPMENT PROGRAM
12. STAGING SEQUENCE DEVELOPMENT PROGRAM
13. STAGING SEQUENCE DEVELOPMENT PROGRAM
14. STAGING SEQUENCE DEVELOPMENT PROGRAM
15. STAGING SEQUENCE DEVELOPMENT PROGRAM
16. STAGING SEQUENCE DEVELOPMENT PROGRAM
17. STAGING SEQUENCE DEVELOPMENT PROGRAM
18. STAGING SEQUENCE DEVELOPMENT PROGRAM
19. STAGING SEQUENCE DEVELOPMENT PROGRAM
20. STAGING SEQUENCE DEVELOPMENT PROGRAM
21. STAGING SEQUENCE DEVELOPMENT PROGRAM
22. STAGING SEQUENCE DEVELOPMENT PROGRAM
23. STAGING SEQUENCE DEVELOPMENT PROGRAM
24. STAGING SEQUENCE DEVELOPMENT PROGRAM
25. STAGING SEQUENCE DEVELOPMENT PROGRAM
26. STAGING SEQUENCE DEVELOPMENT PROGRAM
27. STAGING SEQUENCE DEVELOPMENT PROGRAM
28. STAGING SEQUENCE DEVELOPMENT PROGRAM
29. STAGING SEQUENCE DEVELOPMENT PROGRAM
30. STAGING SEQUENCE DEVELOPMENT PROGRAM
31. STAGING SEQUENCE DEVELOPMENT PROGRAM
32. STAGING SEQUENCE DEVELOPMENT PROGRAM
33. STAGING SEQUENCE DEVELOPMENT PROGRAM
34. STAGING SEQUENCE DEVELOPMENT PROGRAM
35. STAGING SEQUENCE DEVELOPMENT PROGRAM
36. STAGING SEQUENCE DEVELOPMENT PROGRAM
37. STAGING SEQUENCE DEVELOPMENT PROGRAM
38. STAGING SEQUENCE DEVELOPMENT PROGRAM
39. STAGING SEQUENCE DEVELOPMENT PROGRAM
40. STAGING SEQUENCE DEVELOPMENT PROGRAM
41. STAGING SEQUENCE DEVELOPMENT PROGRAM
42. STAGING SEQUENCE DEVELOPMENT PROGRAM
43. STAGING SEQUENCE DEVELOPMENT PROGRAM
44. STAGING SEQUENCE DEVELOPMENT PROGRAM
45. STAGING SEQUENCE DEVELOPMENT PROGRAM
46. STAGING SEQUENCE DEVELOPMENT PROGRAM
47. STAGING SEQUENCE DEVELOPMENT PROGRAM
48. STAGING SEQUENCE DEVELOPMENT PROGRAM
49. STAGING SEQUENCE DEVELOPMENT PROGRAM
50. STAGING SEQUENCE DEVELOPMENT PROGRAM



**SURVEYOR'S CERTIFICATION**  
 I HEREBY CERTIFY THAT THE PLAIN SHOWN HEREON HAS BEEN PREPARED IN ACCORDANCE WITH THE SURVEYING REGULATIONS OF MARYLAND COUNTY, MD.  
 [Signature]  
 [Stamp]



<b>PRELIMINARY PLAN</b>
<b>PANAGOS TRACT</b>
JOHN & MARY ANN PANAGOS 8000 BELLS MILL ROAD PORTDMAR, MD 20684
<b>HAINES LAND DESIGN</b> 1111 W. WASHINGTON AVE. ANNAPOLIS, MD 21403
SHEET NO. 1 OF 1

- LEGEND**
- EX. CONTOUR
  - EX. GAS LINE
  - EX. DRAINAGE
  - PROP. GRADE
  - LIMITS OF DISTURBANCE
  - PROP. PROPERTY
  - PROP. BUILDING
  - PROP. WATER
  - PROP. SEWER
  - PROP. FENCE
  - W/ENTRANCE FEATURE
  - PROP. DRIVEWAY
  - PROP. ROAD

00065