

Item # 9

M-NCPPC



MONTGOMERY COUNTY DEPARTMENT OF PARK AND PLANNING

THE MARYLAND-NATIONAL CAPITAL
PARK AND PLANNING COMMISSION

8787 Georgia Avenue
Silver Spring, Maryland 20910-3760
301-495-4500, www.mncppc.org

M E M O R A N D U M

DATE: September 9, 2005

TO: Montgomery County Planning Board

FROM: Catherine Conlon
Development Review Division
(301) 495-4542

SUBJECT: Informational Maps for Subdivision Items on the
Planning Board's Agenda for September 15, 2005.

Attached are copies of plan drawings for item #07, #08, and #09. These subdivision items are scheduled for Planning Board consideration on September 15, 2005. The items are further identified as follows:

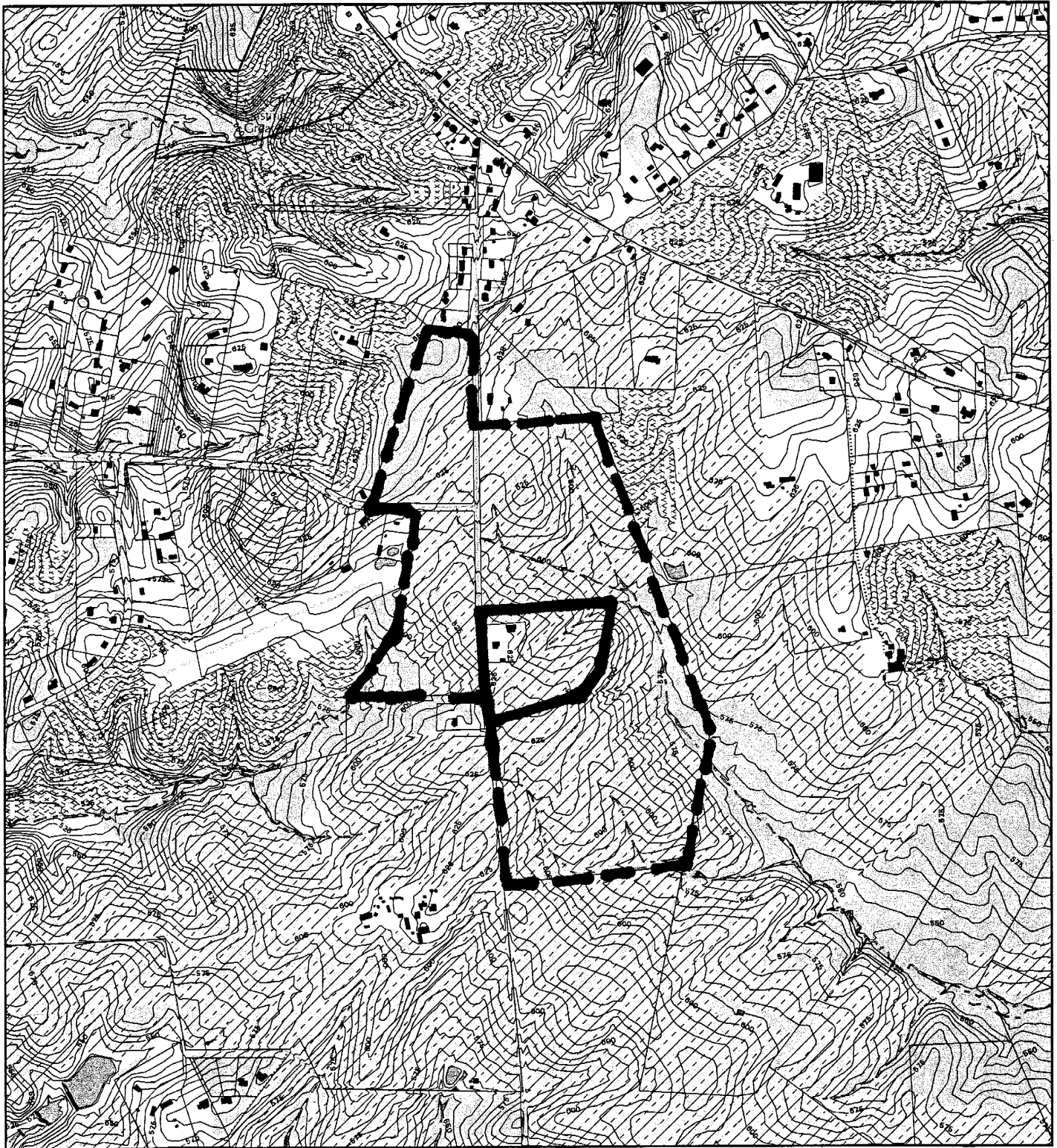
Agenda Item #07 - Preliminary Plan 120050930 (formerly 1-05093)
Clubbs Farm

Agenda Item #08 - Preliminary Plan 120060650 (formerly 1-00065E)
Panagos Property

Agenda Item #09 - Preliminary Plan 120050900 (formerly- 1-05090)
Ruppert Nurseries Fall Creek Farm East

Attachment

FALL CREEK FARM EAST (1-05090)



Map compiled on September 09, 2005 at 9:10 AM | Site located on base sheet no - 233NW07

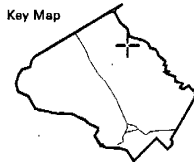
NOTICE

The planimetric, property, and topographic information shown on this map is based on copyrighted Map Products from the Montgomery County Department of Park and Planning of the Maryland -National Capital Park and Planning Commission, and may not be copied or reproduced without written permission from M-NCPPC.

Property lines are compiled by adjusting the property lines to topography created from aerial photography and should not be interpreted as actual field surveys. Planimetric features were compiled from 1:14400 scale aerial photography using stereo photogrammetric methods.

This map is created from a variety of data sources, and may not reflect the most current conditions in any one location and may not be completely accurate or up to date. All map features are approximately within five feet of their true location. This map may not be the same as a map of the same area plotted at an earlier time as the data is continuously updated. Use of this map, other than for general planning purposes is not recommended. - Copyright 1998

Key Map



N



Research & Technology Center



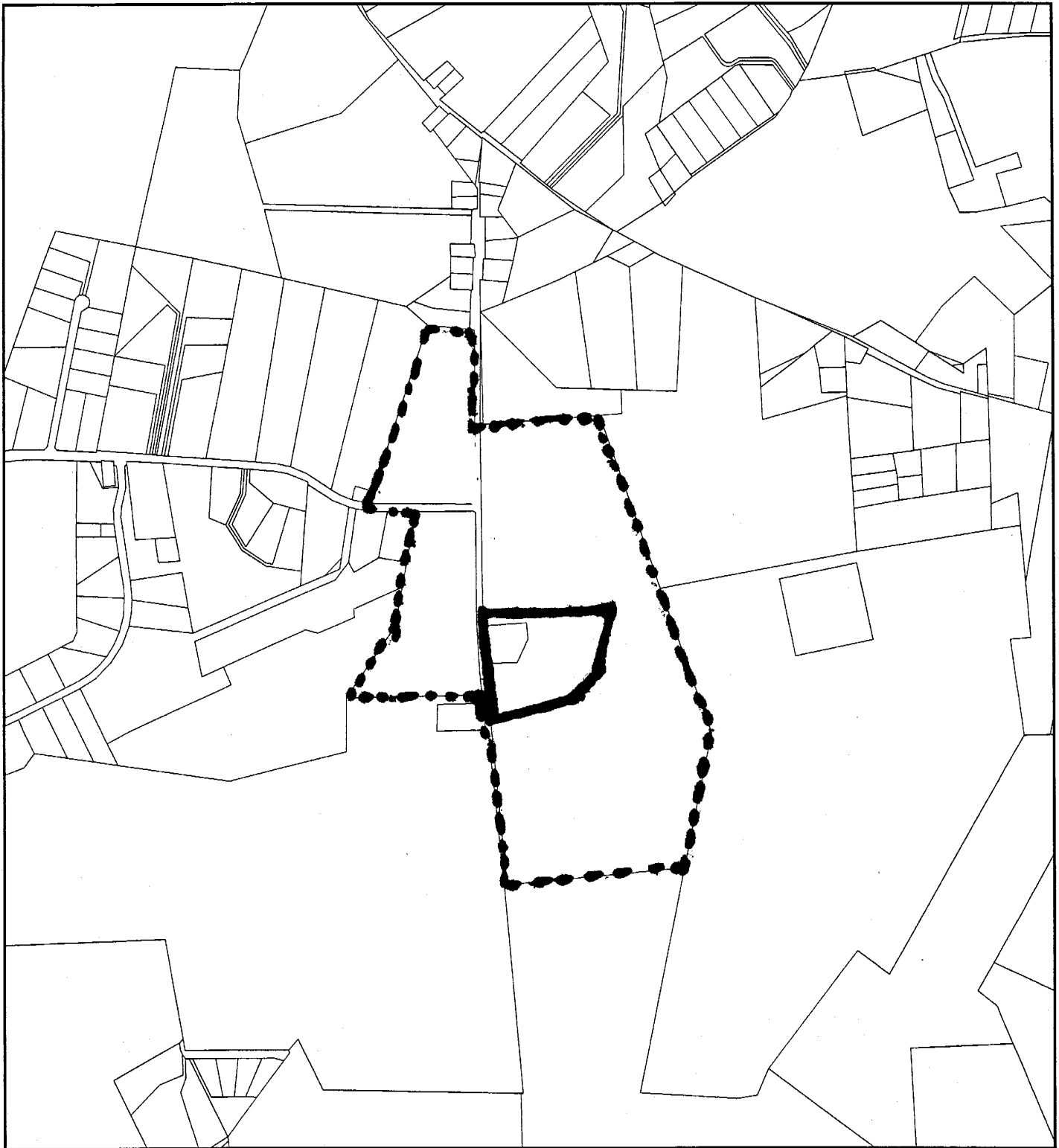
1 inch = 1200 feet
1 : 14400

MONTGOMERY COUNTY DEPARTMENT OF PARK AND PLANNING
THE MARYLAND-NATIONAL CAPITAL PARK AND PLANNING COMMISSION

M-NCPPC

8787 Georgia Avenue - Silver Spring, Maryland 20910-3760

FALL CREEK FARM EAST (1-05090)



Map compiled on September 09, 2005 at 9:08 AM | Site located on base sheet no - 233NW07

NOTICE

The planimetric, property, and topographic information shown on this map is based on copyrighted Map Products from the Montgomery County Department of Park and Planning of the Maryland-National Capital Park and Planning Commission, and may not be copied or reproduced without written permission from M-NCPPC.

Property lines are compiled by adjusting the property lines to topography created from aerial photography and should not be interpreted as actual field surveys. Planimetric features were compiled from 1:14400 scale aerial photography using stereo photogrammetric methods.

This map is created from a variety of data sources, and may not reflect the most current conditions in any one location and may not be completely accurate or up to date. All map features are approximately within five feet of their true location. This map may not be the same as a map of the same area plotted at an earlier time as the data is continuously updated. Use of this map, other than for general planning purposes is not recommended. - Copyright 1998

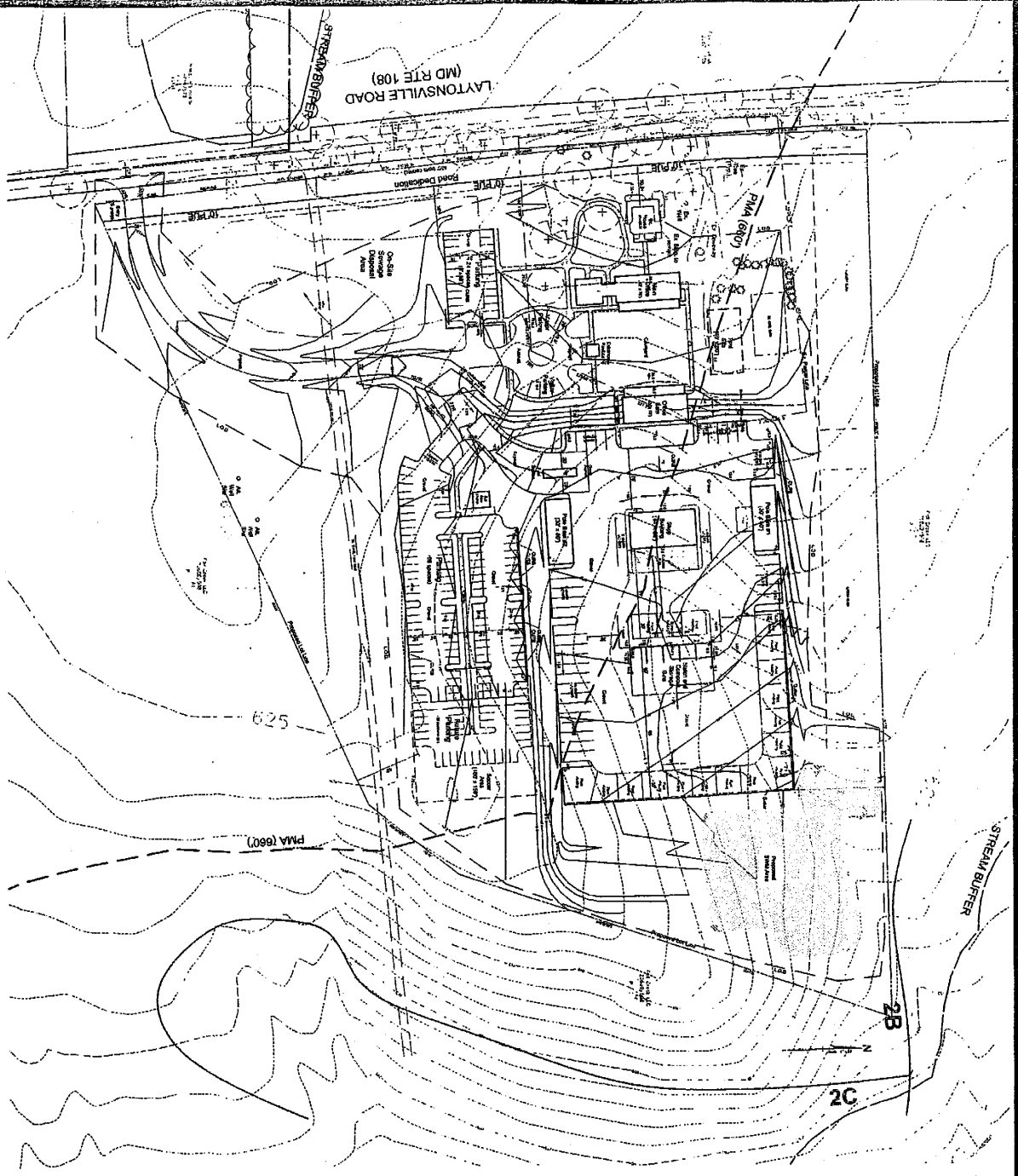
Key Map



Research & Technology Center



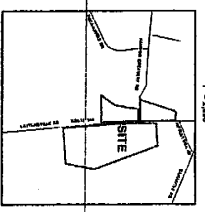
1 inch = 1200 feet
1 : 14400



- PARKING NOTES:**
1. Gross floor area of office space shown on plan - 7,516 SF
 2. Number of parking spaces required (@ 3 sq/1,000 sf of office space) - 23 spaces
 3. Total number of spaces shown on plan - 195
- Office parking area - 74 spaces
 General parking area - 131 spaces (includes expanded area)
 Visitor parking spaces shown - 10

| REQUIRED / PROVIDED DEVELOPMENT STANDARDS | | | |
|-------------------------------------------|------------------------------|----------|---------|
| SECTION | REQUIREMENT | PROVIDED | REMARKS |
| LOT ZONE (SECTION 89-C-4) | MINIMUM LOT SIDE SETBACK | 50' | 50' |
| | MINIMUM LOT FRONT SETBACK | 50' | 50' |
| | MINIMUM LOT REAR SETBACK | 50' | 50' |
| | MINIMUM LOT CORNER SETBACK | 50' | 50' |
| REQUIREMENT | SECTION FROM FRONT LOT LINE | 50' | 50' |
| | SECTION FROM SIDE LOT LINE | 50' | 50' |
| | SECTION FROM REAR LOT LINE | 50' | 50' |
| | SECTION FROM CORNER LOT LINE | 50' | 50' |
| LANDSCAPE CONTRACTION (SECTION 89-C-2A.0) | MINIMUM LOT SIDE SETBACK | 2.5 AC | 18.4 AC |
| | MINIMUM LOT FRONT SETBACK | 50' | 50' |
| TRAFFIC | TRAILING | NA | NA |
| | POINT OF OPERATION | NA | NA |

REVISION FOR:
FALL CREEK FARM EAST LLC
 7820 WALKER CREEKWAY ROAD
 GAITHERSBURG, MD 20878
 301-443-3000



PRELIMINARY PLAN
RUPPERT NURSERIES: FALL CREEK FARM EAST
 Montgomery County, Maryland

B&A
 Design & Associates, Inc.
 1 and Planning Consultants
 893 Shady Grove Court
 Gaithersburg, MD 20878
 (301) 984-6200

date: April 4, 2005
 scale: 1"=50'

