M E M O R A N D U M

DATE: October 6, 2005

TO: Montgomery County Planning Board

FROM: Catherine Conlon
Development Review Division
(301) 495-4542

SUBJECT: Informational Maps for Subdivision Items on the
Planning Board's Agenda for October 10, 2005.

Attached are copies of plan drawings for item #07, #08, #09, #10, #11, #12 and #13. These subdivision items are scheduled for Planning Board consideration on October 10, 2005. The items are further identified as follows:

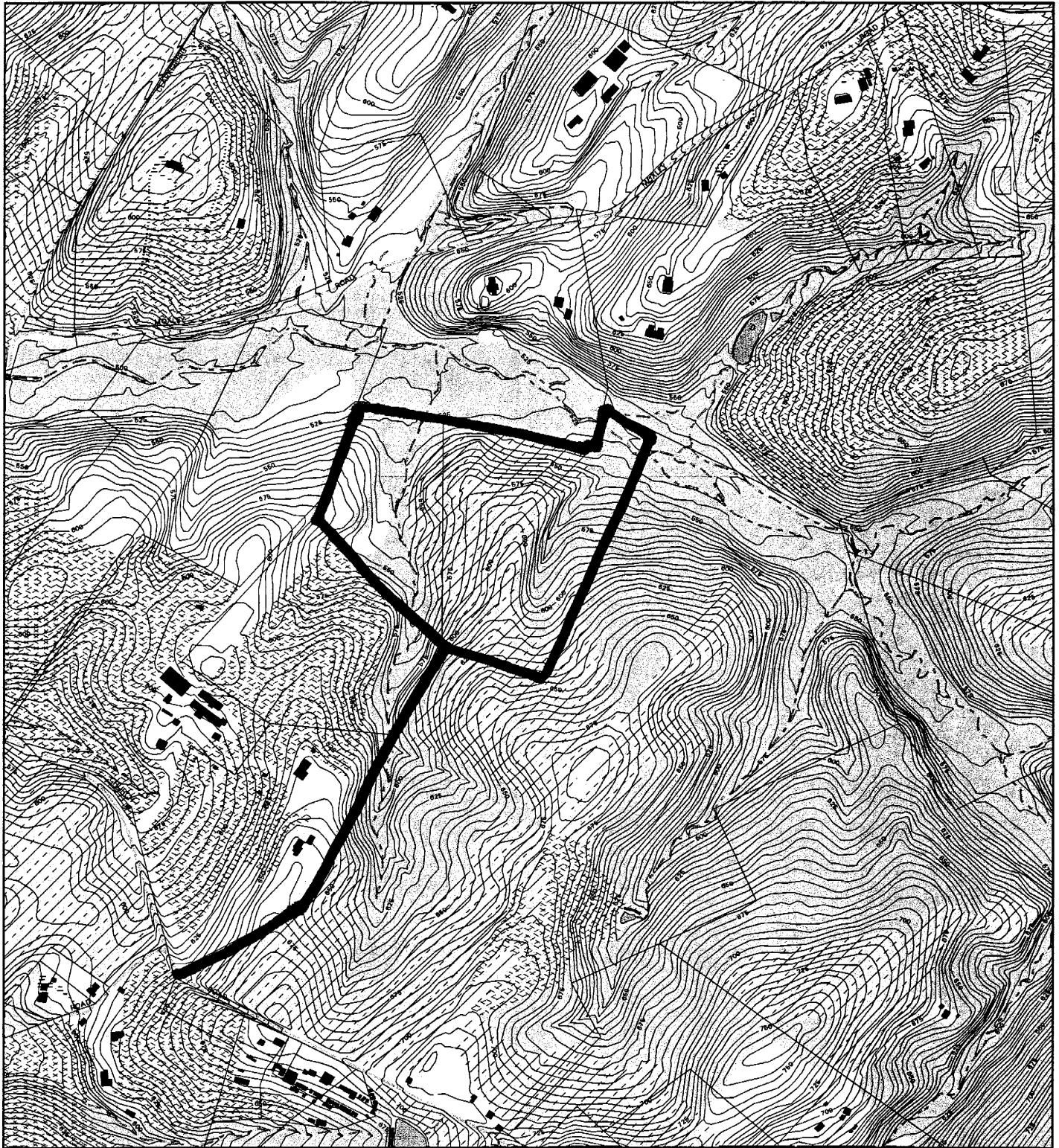
- Agenda Item #07 - Preliminary Plan 120060060
(formerly 1-06006)
1200 Blair Mill Road
- Agenda Item #08 - Preliminary Plan 120050540
(formerly 1-05054)
Butz Property
- Agenda Item #09 - Preliminary Plan 11998091C
(formerly 1-98091C)
Rock Spring Park
- Agenda Item #10 - Preliminary Plan 12004105A
(formerly- 1-04105A)
Roberts Landing
- Agenda Item #11 - Preliminary Plan 120040630
(formerly- 1-04063)
Travilah Acres

Agenda Item #12 - Pre-Preliminary Plan 120050150
(formerly- 7-05015)
Sanctuary Farm

Agenda Item #13 - Preliminary Plan 120050710
(formerly- 1-05071)
Glen Mill Road

Attachment

SANCTUARY FARM (720050150 FORMERLY 7-05015)



Map compiled on October 06, 2005 at 10:53 AM | Site located on base sheet no - 239NW11

NOTICE

The planimetric, property, and topographic information shown on this map is based on copyrighted Map Products from the Montgomery County Department of Park and Planning of the Maryland-National Capital Park and Planning Commission, and may not be copied or reproduced without written permission from M-NCPPC.

Property lines are compiled by adjusting the property lines to topography created from aerial photography and should not be interpreted as actual field surveys. Planimetric features were compiled from 1:14400 scale aerial photography using stereo photogrammetric methods.

This map is created from a variety of data sources, and may not reflect the most current conditions in any one location and may not be completely accurate or up to date. All map features are approximately within five feet of their true location. This map may not be the same as a map of the same area plotted at an earlier time as the data is continuously updated. Use of this map, other than for general planning purposes is not recommended. - Copyright 1998

Key Map



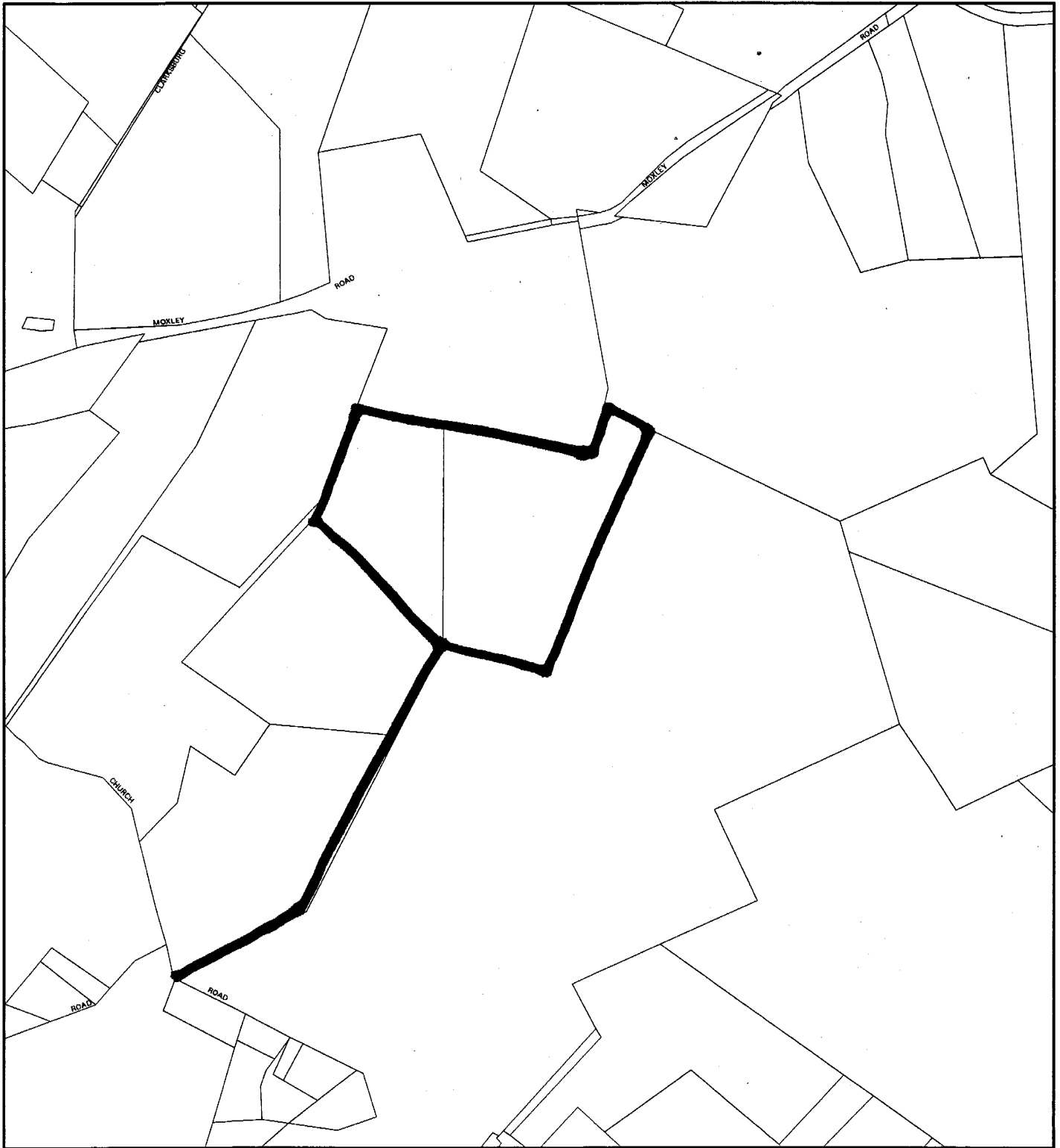
N



Research & Technology Center

0 800
1 inch = 800 feet
1 : 9600

SANCTUARY FARM (720050150 FORMERLY 7-05015)



Map compiled on October 06, 2005 at 10:50 AM | Site located on base sheet no - 239NW11

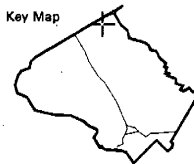
NOTICE

The planimetric, property, and topographic information shown on this map is based on copyrighted Map Products from the Montgomery County Department of Park and Planning of the Maryland -National Capital Park and Planning Commission, and may not be copied or reproduced without written permission from M-NCPPC.

Property lines are compiled by adjusting the property lines to topography created from aerial photography and should not be interpreted as actual field surveys. Planimetric features were compiled from 1:14400 scale aerial photography using stereo photogrammetric methods.

This map is created from a variety of data sources, and may not reflect the most current conditions in any one location and may not be completely accurate or up to date. All map features are approximately within five feet of their true location. This map may not be the same as a map of the same area plotted at an earlier time as the data is continuously updated. Use of this map, other than for general planning purposes is not recommended. - Copyright 1998

Key Map



N



1 inch = 800 feet
1 : 9600

