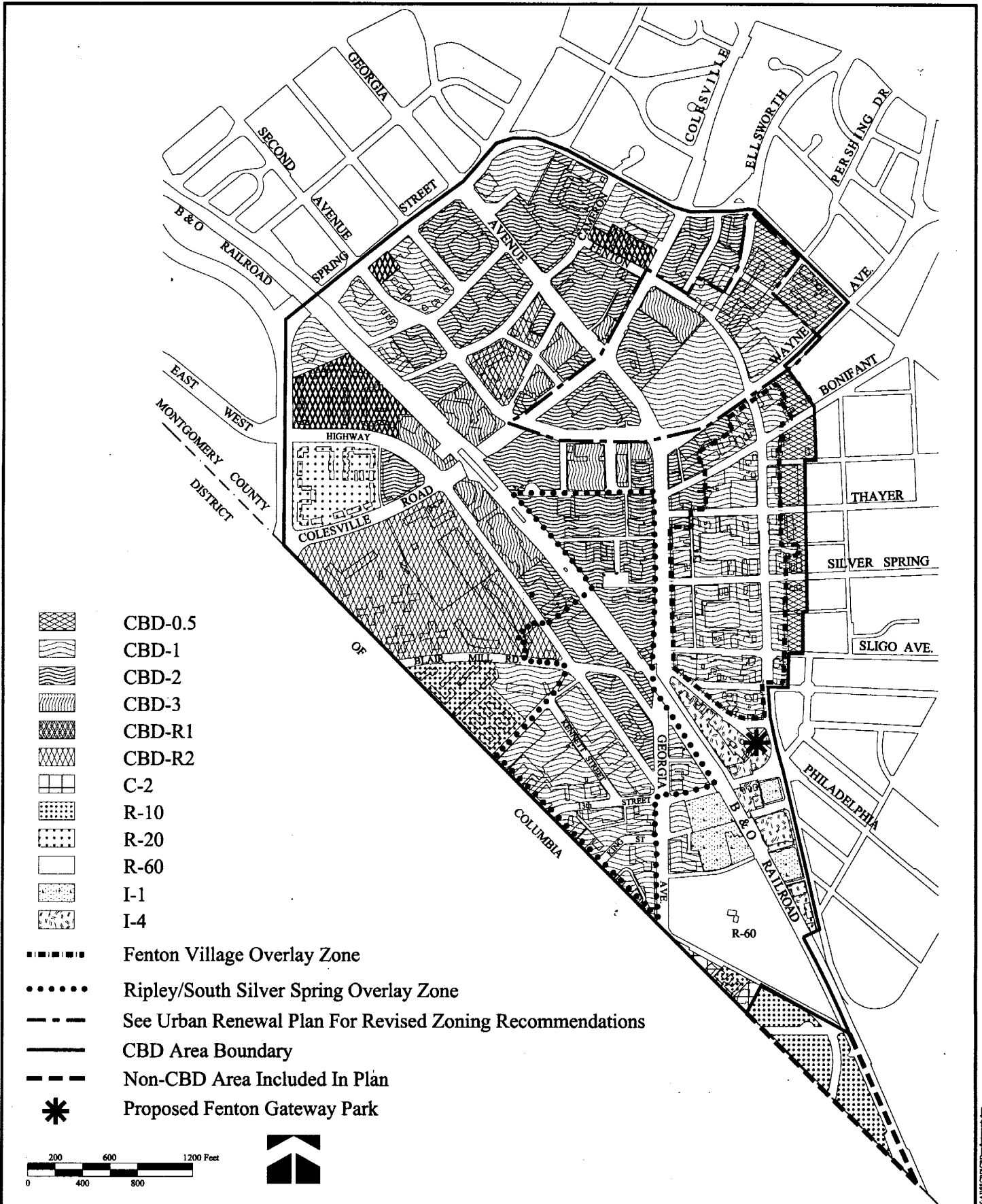


# SILVER SPRING CBD ZONING

# Attachment 4



# Attachment 5

## Fenton Gateway Park

Update to the East Silver Spring Citizen's Association  
July 10, 2001

### Presentation by:

Glenn Kreger, Team Leader, Community-Based Planning,  
Silver Spring/Takoma Park Team and;  
Miguel Iraola, Urban Designer, Community-Based Planning,  
Silver Spring/Takoma Park Team

### Location:

M-NCPPC  
3rd Floor Conference Room  
8787 Georgia Avenue  
Silver Spring, Maryland 20910

### Background:

A new park design is being developed for the existing Fenton Street Urban Park located at the northwest quadrant of the intersection of Fenton Street and Burlington Avenue. The new Fenton Gateway Park involves the redevelopment of the existing park facility coordinated with the streetscape improvements currently being implemented by DHCA. Proposed improvements to the park include additional land acquisition, new pathways, landscape plantings, grading, lighting, parking, skateboard/in-line skate facilities and associated streetscape improvements.

### Agenda:

- |              |  |
|--------------|--|
| 7:00-7:05 pm | Introductions  |
| 7:05-7:15 pm | Overview of the Project <ul style="list-style-type: none"><li>• Sector Plan Recommendation</li><li>• Relationship to the Transit Center Park Mitigation</li><li>• Existing Park Conditions</li></ul> |
| 7:15-7:45 pm | Proposed Park Improvements <ul style="list-style-type: none"><li>• Potential Land Acquisition</li><li>• Program for Active Recreation</li><li>• Alternative Park Plans</li></ul>                     |
| 7:45-8:30 pm | Questions and Answers  |
| 8:30 pm      | Adjourn  |

# POTENTIAL SKATEBOARD PARK LOCATIONS



x:/A1/SSCBD/Potentskateparks.dwg 4/22/05



Existing And Proposed Parks



Fenton Gateway Park (Silver Spring CBD)



Silver Spring Intermediate Neighborhood Park (Takoma Park)



Takoma Piney Branch Local Park (Takoma Park)



CBD Area Boundary

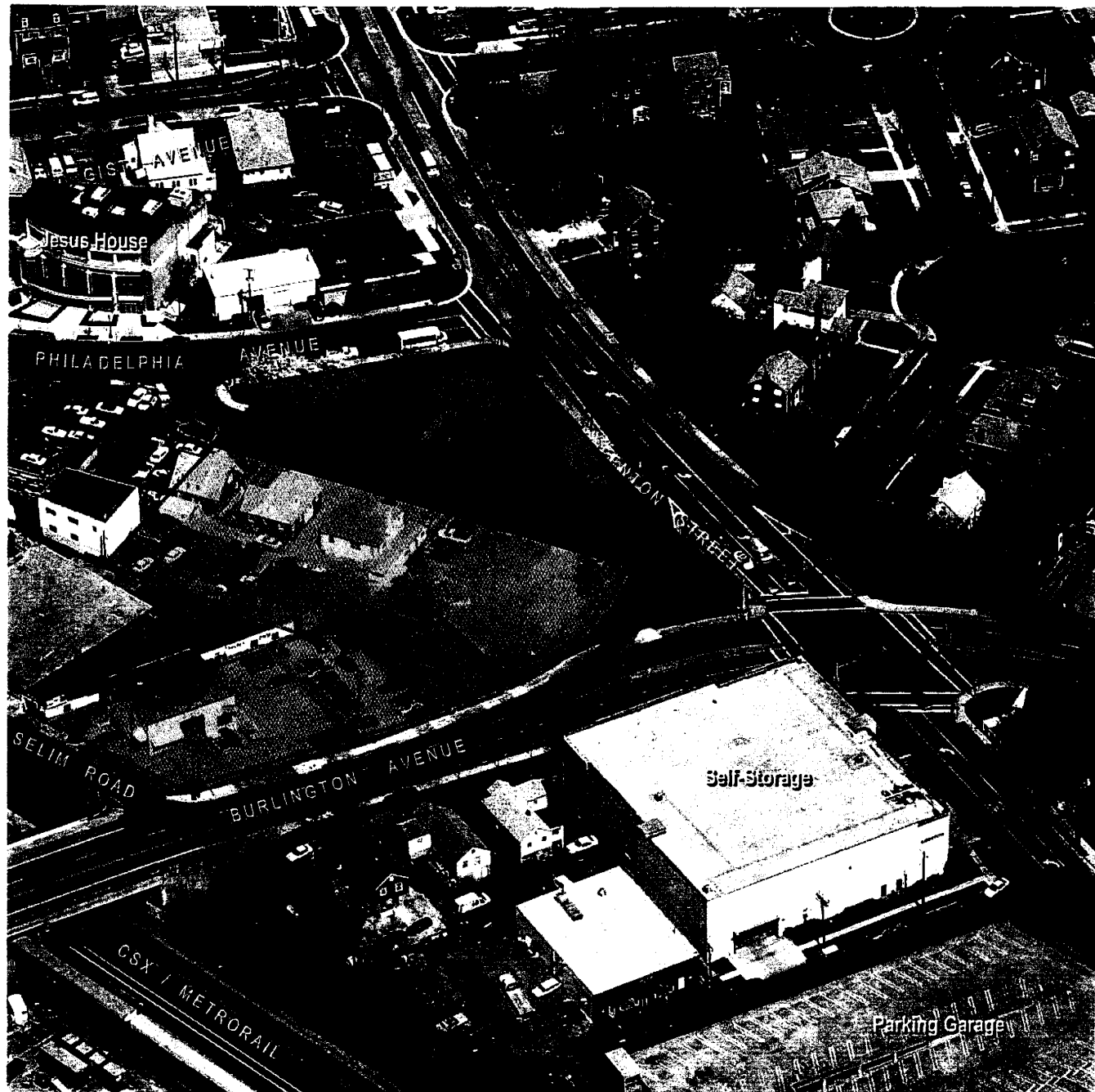


Non-CBD Area Included In Plan

Not To Scale



# Attachment 7



-  M-NCPPC
-  Public Street Right-of-Way
-  Private

## Current Ownership

January 19, 2005



# FENTON GATEWAY PARK

SILVER SPRING, MARYLAND

