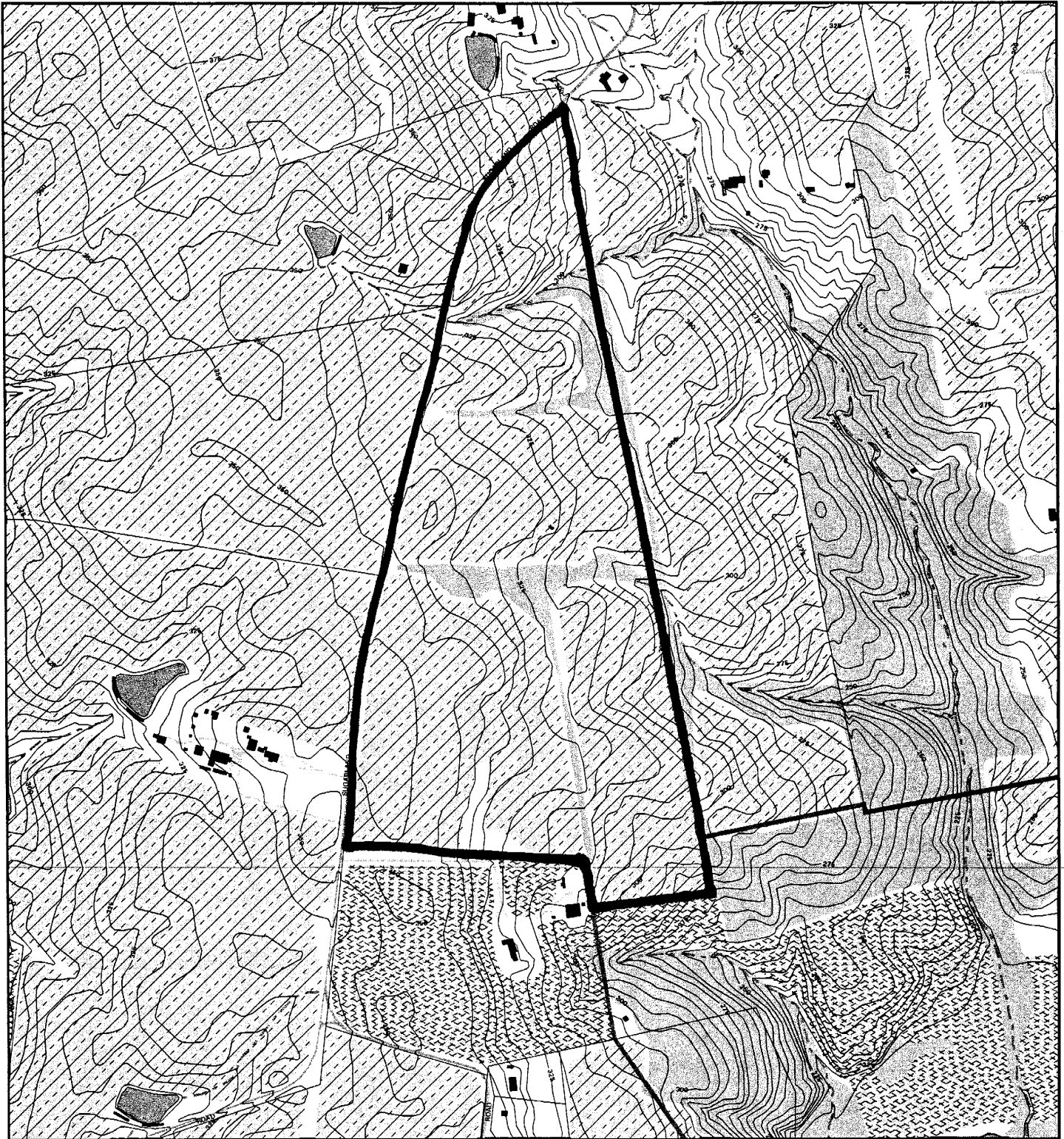


BUTZ PROPERTY (120050340 FORMERLY 1-05034)



Map compiled on October 03, 2005 at 6:22 PM | Site located on base sheet no - 221NW17

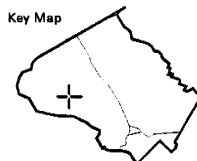
NOTICE

The planimetric, property, and topographic information shown on this map is based on copyrighted Map Products from the Montgomery County Department of Park and Planning of the Maryland - National Capital Park and Planning Commission, and may not be copied or reproduced without written permission from M-NCPPC.

Property lines are compiled by adjusting the property lines to topography created from aerial photography and should not be interpreted as actual field surveys. Planimetric features were compiled from 1:14400 scale aerial photography using stereo photogrammetric methods.

This map is created from a variety of data sources, and may not reflect the most current conditions in any one location and may not be completely accurate or up to date. All map features are approximately within five feet of their true location. This map may not be the same as a map of the same area plotted at an earlier time as the data is continuously updated. Use of this map, other than for general planning purposes is not recommended. - Copyright 1998

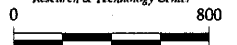
Key Map



N



Research & Technology Center

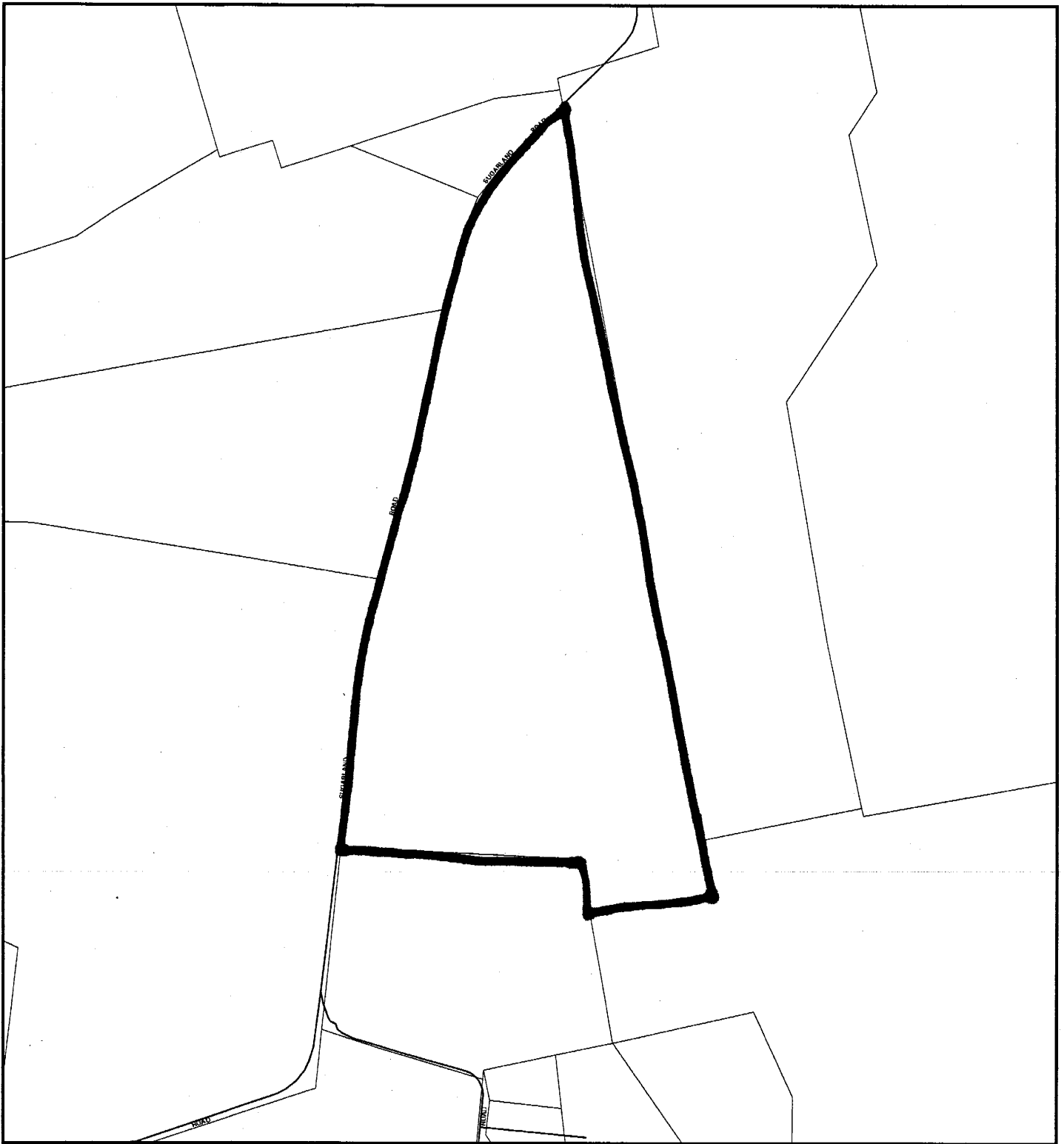


1 inch = 800 feet
1 : 9600

MONTGOMERY COUNTY DEPARTMENT OF PARK AND PLANNING
 THE MARYLAND-NATIONAL CAPITAL PARK AND PLANNING COMMISSION
 8787 Georgia Avenue - Silver Spring, Maryland 20910-3760

M-NCPPC

BUTZ PROPERTY (120050340 FORMERLY 1-05034)



Map compiled on October 03, 2005 at 6:32 PM | Site located on base sheet no - 221NW17

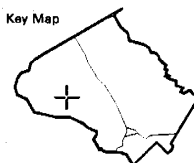
NOTICE

The planimetric, property, and topographic information shown on this map is based on copyrighted Map Products from the Montgomery County Department of Park and Planning of the Maryland -National Capital Park and Planning Commission, and may not be copied or reproduced without written permission from M-NCPPC.

Property lines are compiled by adjusting the property lines to topography created from aerial photography and should not be interpreted as actual field surveys. Planimetric features were compiled from 1:14400 scale aerial photography using stereo photogrammetric methods.

This map is created from a variety of data sources, and may not reflect the most current conditions in any one location and may not be completely accurate or up to date. All map features are approximately within five feet of their true location. This map may not be the same as a map of the same area plotted at an earlier time as the data is continuously updated. Use of this map, other than for general planning purposes is not recommended. - Copyright 1998

Key Map



N



Research & Technology Center



1 inch = 800 feet
1 : 9600

MONTGOMERY COUNTY DEPARTMENT OF PARK AND PLANNING
THE MARYLAND-NATIONAL CAPITAL PARK AND PLANNING COMMISSION

M-NCPPC

8787 Georgia Avenue - Silver Spring, Maryland 20910-3760

2

