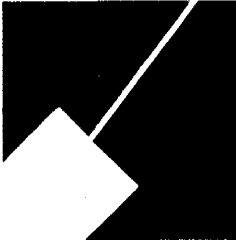


M-NCPPC



MONTGOMERY COUNTY DEPARTMENT OF PARK AND PLANNING

THE MARYLAND-NATIONAL CAPITAL
PARK AND PLANNING COMMISSION

8787 Georgia Avenue
Silver Spring, Maryland 20910-3760
301-495-4500, www.mncppc.org

M E M O R A N D U M

DATE: October 21, 2005

TO: Montgomery County Planning Board

FROM: Catherine Conlon *CC*
Development Review Division
(301) 495-4542

SUBJECT: Informational Maps for Subdivision Items on the
Planning Board's Agenda for October 27, 2005.

Attached are copies of plan drawings for item #06, #07, #08, and #09, and #10. These subdivision items are scheduled for Planning Board consideration on October 27, 2005. The items are further identified as follows:

Agenda Item #06 - Preliminary Plan 120051030
(formerly 1-05030)
Cabin John Park Sec. 1

Agenda Item #07 - Preliminary Plan 120060030
(formerly 1-06003)
Khalilzadeh Property

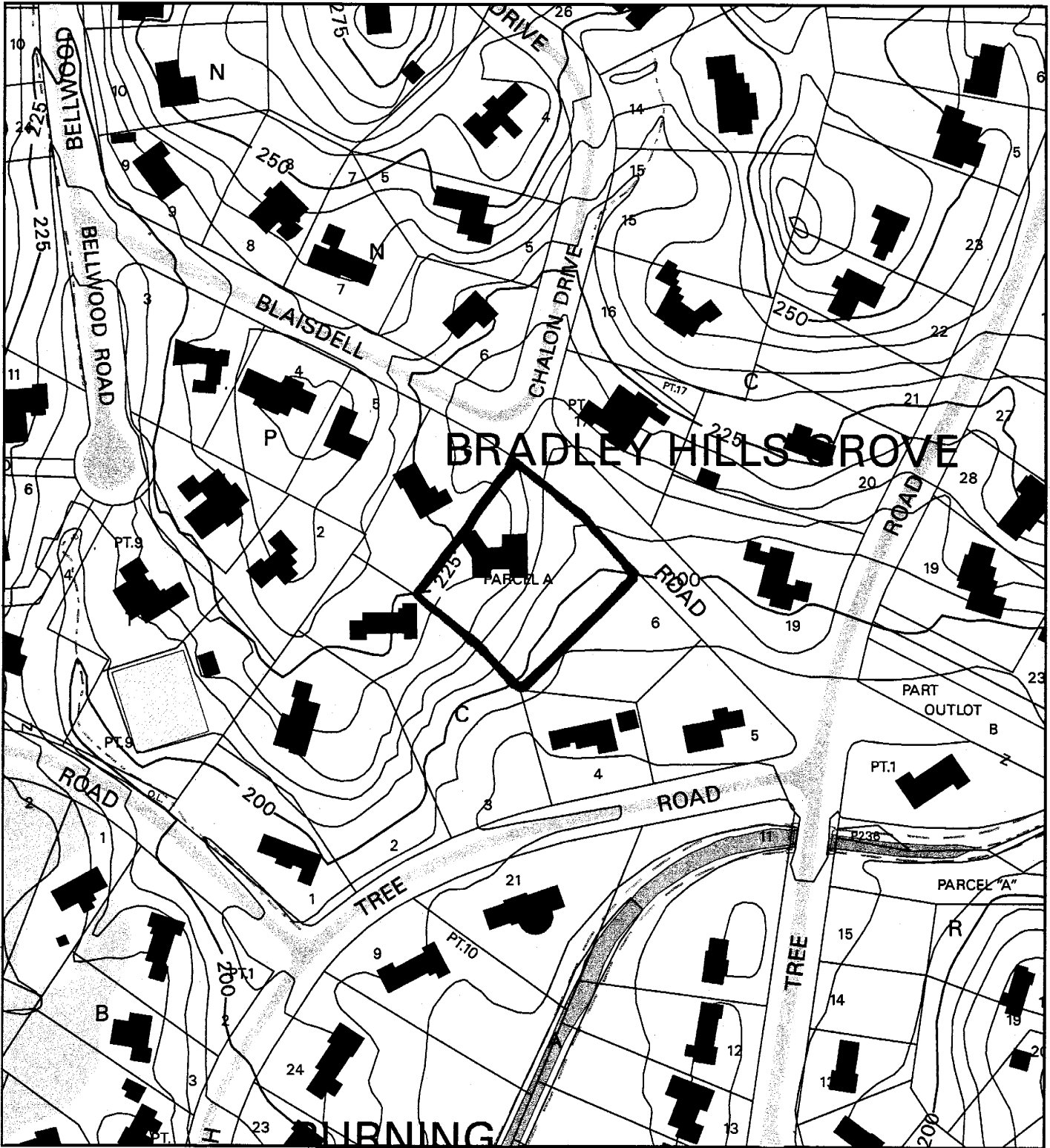
Agenda Item #08 - Preliminary Plan 120020480
(formerly- 1-02048)
Gateway Commons

Agenda Item #09 - Preliminary Plan 120060090
(formerly- 1-06009)
Bradley Hills Grove

Agenda Item #10 - Preliminary Plan 120050990
(formerly- 1-05099)
Rock Creek Palisades

Attachment

BRADLEY HILLS GROVE (120060090)



Map compiled on October 20, 2005 at 4:37 PM | Site located on base sheet no - 210NW07

NOTICE

The planimetric, property, and topographic information shown on this map is based on copyrighted Map Products from the Montgomery County Department of Park and Planning of the Maryland-National Capital Park and Planning Commission, and may not be copied or reproduced without written permission from M-NCPPC.

Property lines are compiled by adjusting the property lines to topography created from aerial photography and should not be interpreted as actual field surveys. Planimetric features were compiled from 1:14400 scale aerial photography using stereo photogrammetric methods.

This map is created from a variety of data sources, and may not reflect the most current conditions in any one location and may not be completely accurate or up to date. All map features are approximately within five feet of their true location. This map may not be the same as a map of the same area plotted at an earlier time as the data is continuously updated. Use of this map, other than for general planning purposes is not recommended. - Copyright 1998

Key Map

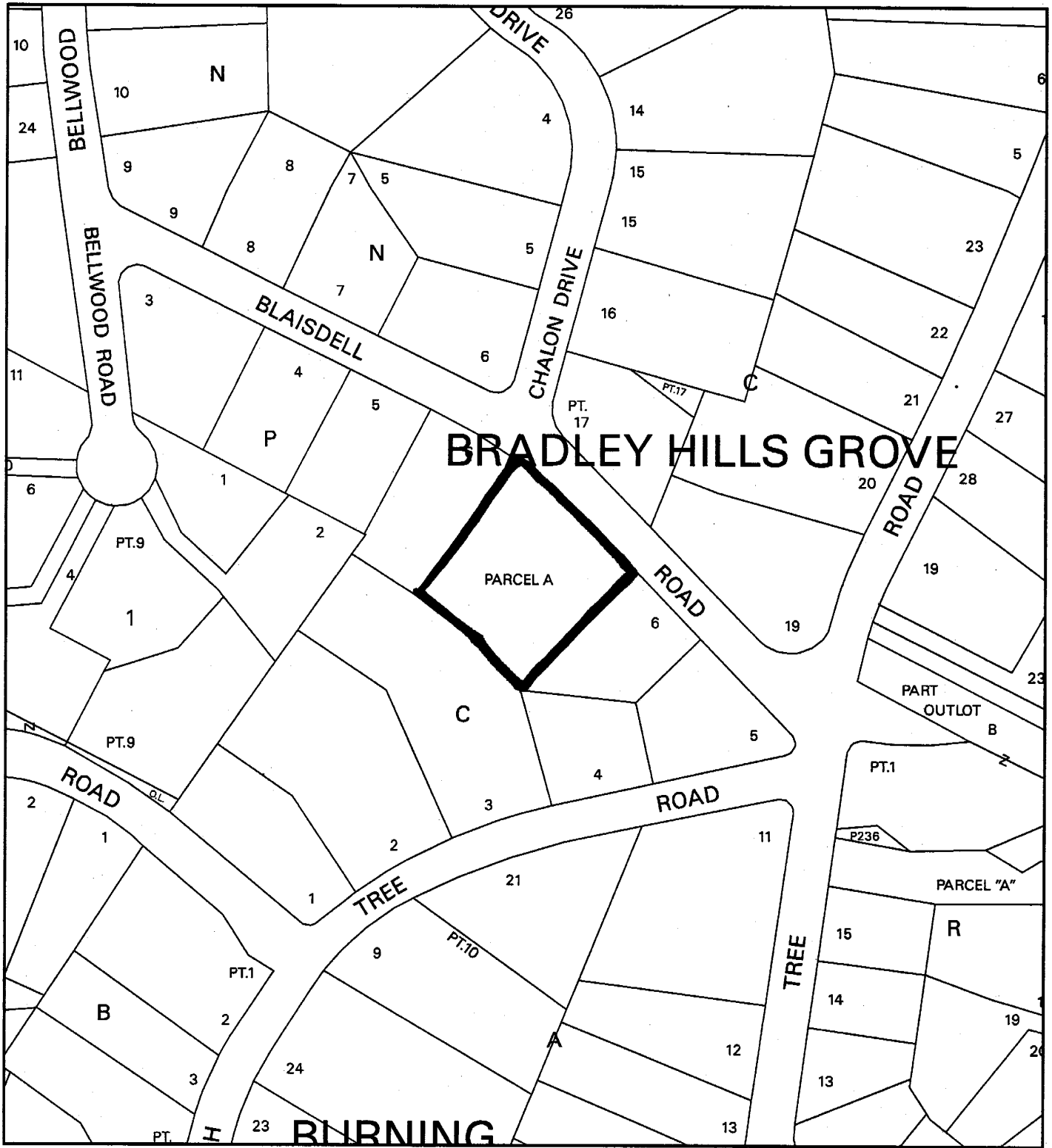


Research & Technology Center



1 inch = 200 feet
1 : 2400

BRADLEY HILLS GROVE (120060090)



Map compiled on October 20, 2005 at 3:34 PM | Site located on base sheet no - 210NW07

NOTICE

The planimetric, property, and topographic information shown on this map is based on copyrighted Map Products from the Montgomery County Department of Park and Planning of the Maryland - National Capital Park and Planning Commission, and may not be copied or reproduced without written permission from M-NCPPC.

Property lines are compiled by adjusting the property lines to topography created from aerial photography and should not be interpreted as actual field surveys. Planimetric features were compiled from 1:14400 scale aerial photography using stereo photogrammetric methods.

This map is created from a variety of data sources, and may not reflect the most current conditions in any one location and may not be completely accurate or up to date. All map features are approximately within five feet of their true location. This map may not be the same as a map of the same area plotted at an earlier time as the data is continuously updated. Use of this map, other than for general planning purposes is not recommended. - Copyright 1998

